

# VILLAGE GREEN CENTER

17401 – 17427 VILLAGE GREEN DRIVE, HOUSTON, TX 77040  
17449 – 17497 VILLAGE GREEN DRIVE, HOUSTON, TX 77040



**NORTHWEST HOUSTON SUBMARKET**



**GREAT ACCESS TO HIGHWAY 290 & BELTWAY 8**



**14' CLEAR HEIGHT**



**3-PHASE POWER (480 V & 200 AMP)**



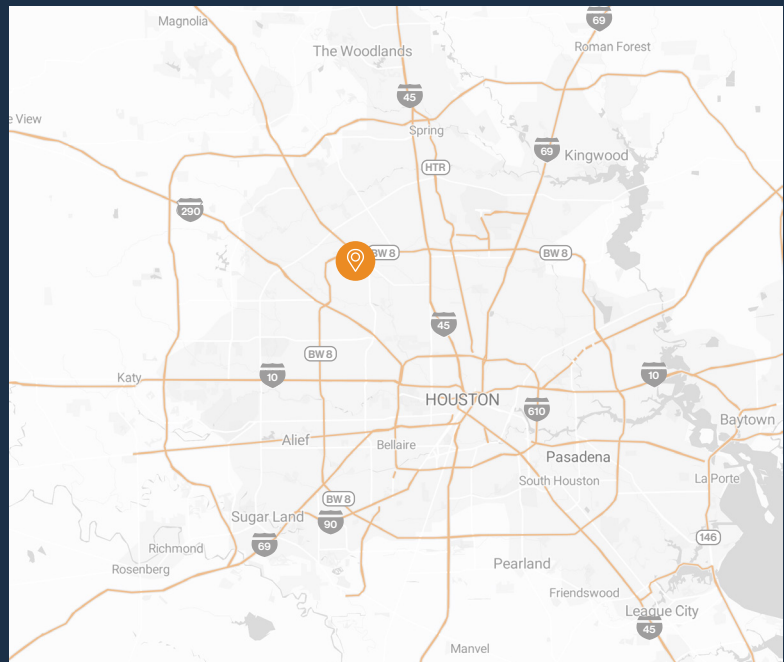
**GRADE-LEVEL LOADING DOORS**



**DRIVE-UP SURFACE PARKING**



**1,817 SF – 3,895 SF SUITES AVAILABLE**



**RYAN YOUNG**



281.584.3320



ryan.young@fort-companies.com



**FORT**  
LEASING

This information is deemed reliable, however, Fort makes no guarantee, warranties, or representations as to the completeness or accuracy thereof.



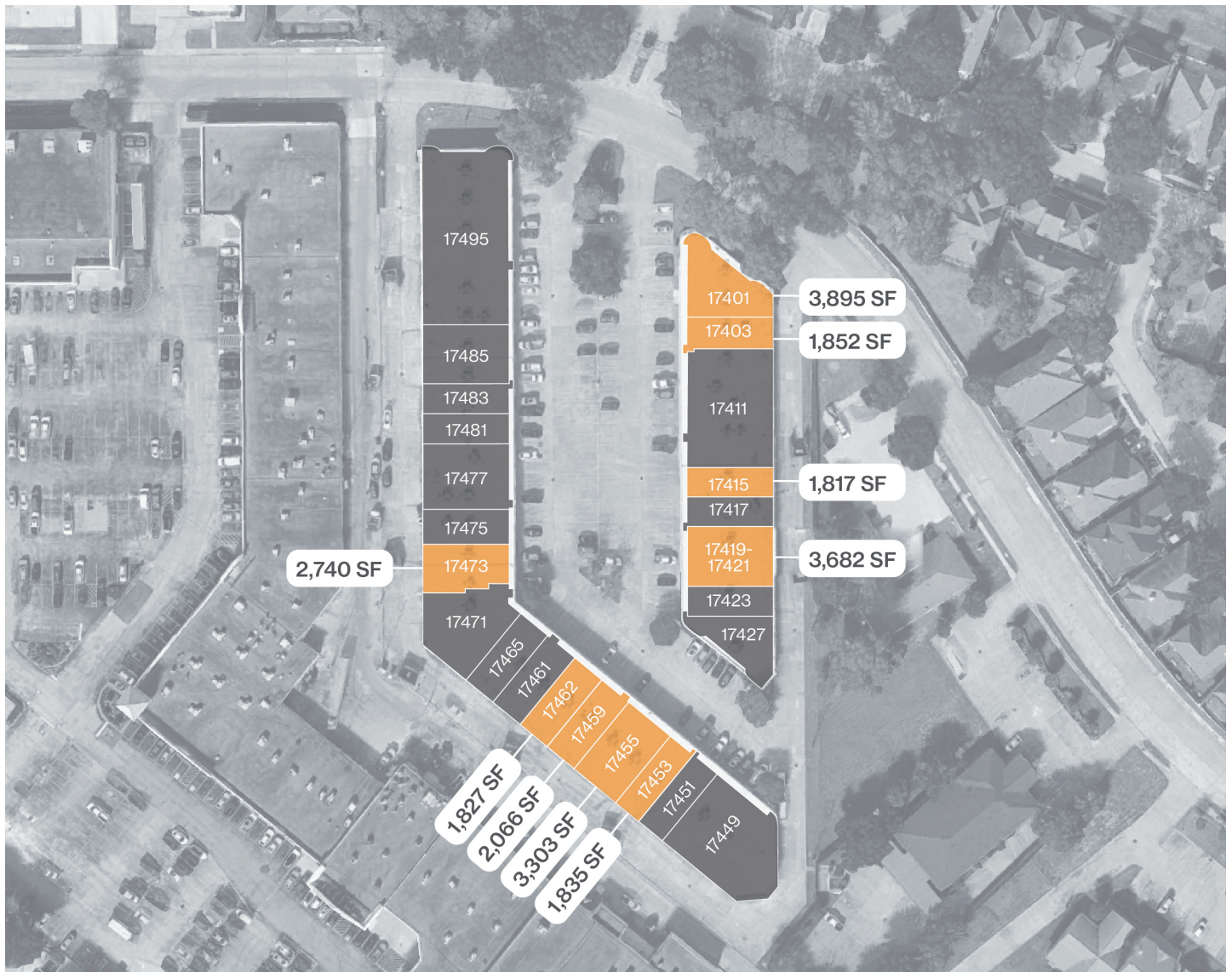


**FORT**  
LEASING

# VILLAGE GREEN CENTER

17401-17427 VILLAGE GREEN DR,  
17449-17497 VILLAGE GREEN DR  
HOUSTON, TEXAS 77040

## SITE PLAN



**RYAN YOUNG**  
281.584.3320  
ryan.young@fort-companies.com

This information is deemed reliable, however, Fort makes no guarantee, warranties, or representations as to the completeness or accuracy thereof.



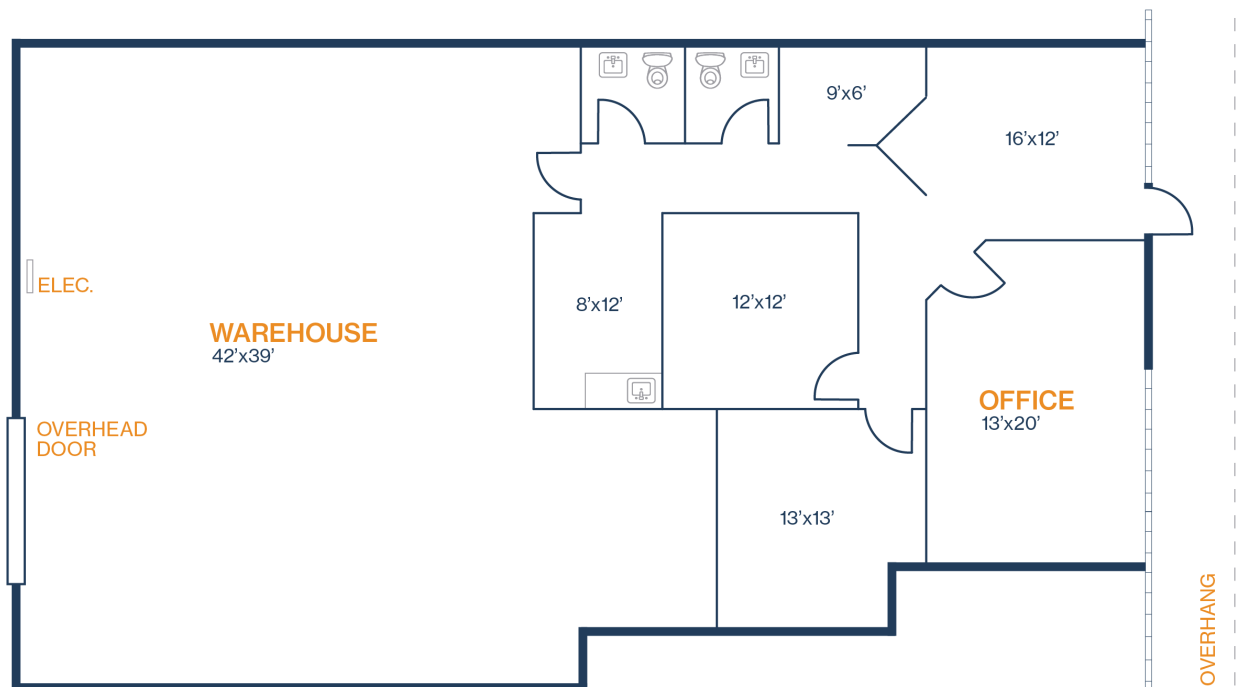
**FORT**  
LEASING

# VILLAGE GREEN CENTER

17401-17427 VILLAGE GREEN DR,  
17449-17497 VILLAGE GREEN DR  
HOUSTON, TEXAS 77040

## UNIT 17473 – 2,740 SF

- 14' Clear Height
- Grade Level Loading
- Climate Controlled Warehouse





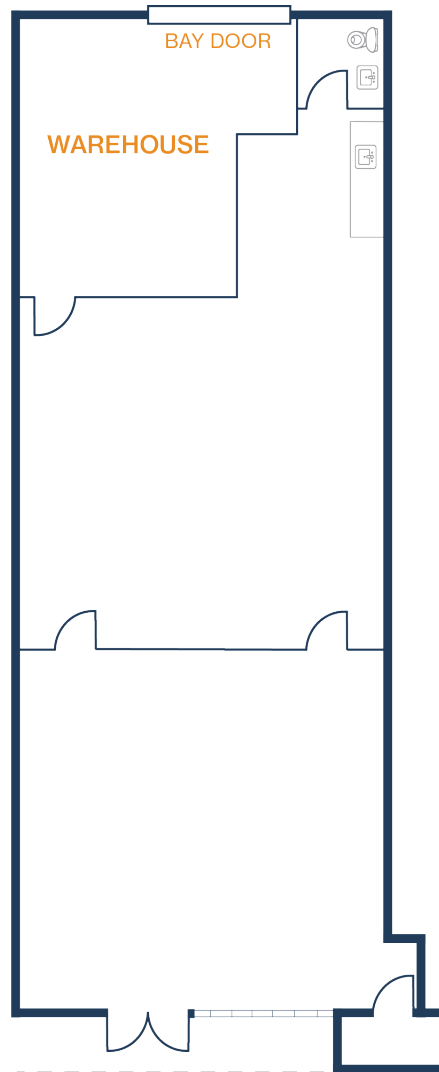
**FORT**  
LEASING

# VILLAGE GREEN CENTER

17401-17427 VILLAGE GREEN DR,  
17449-17497 VILLAGE GREEN DR  
HOUSTON, TEXAS 77040

## UNIT 17403 – 1,852 SF

- 14' Clear Height
- Grade Level Loading



**RYAN YOUNG**  
281.584.3320  
ryan.young@fort-companies.com

This information is deemed reliable,  
however, Fort makes no guarantee,  
warranties, or representations as to the  
completeness or accuracy thereof.



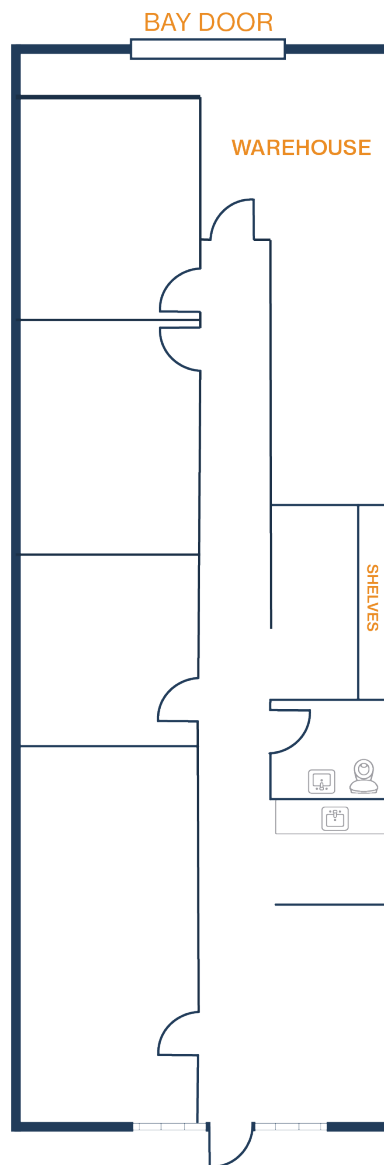
**FORT**  
LEASING

# VILLAGE GREEN CENTER

17401-17427 VILLAGE GREEN DR,  
17449-17497 VILLAGE GREEN DR  
HOUSTON, TEXAS 77040

## UNIT 17415 – 1,817 SF

- 14' Clear Height
- Grade Level Loading
- Three Offices
- Conference Room



**RYAN YOUNG**  
281.584.3320  
ryan.young@fort-companies.com

This information is deemed reliable,  
however, Fort makes no guarantee,  
warranties, or representations as to the  
completeness or accuracy thereof.



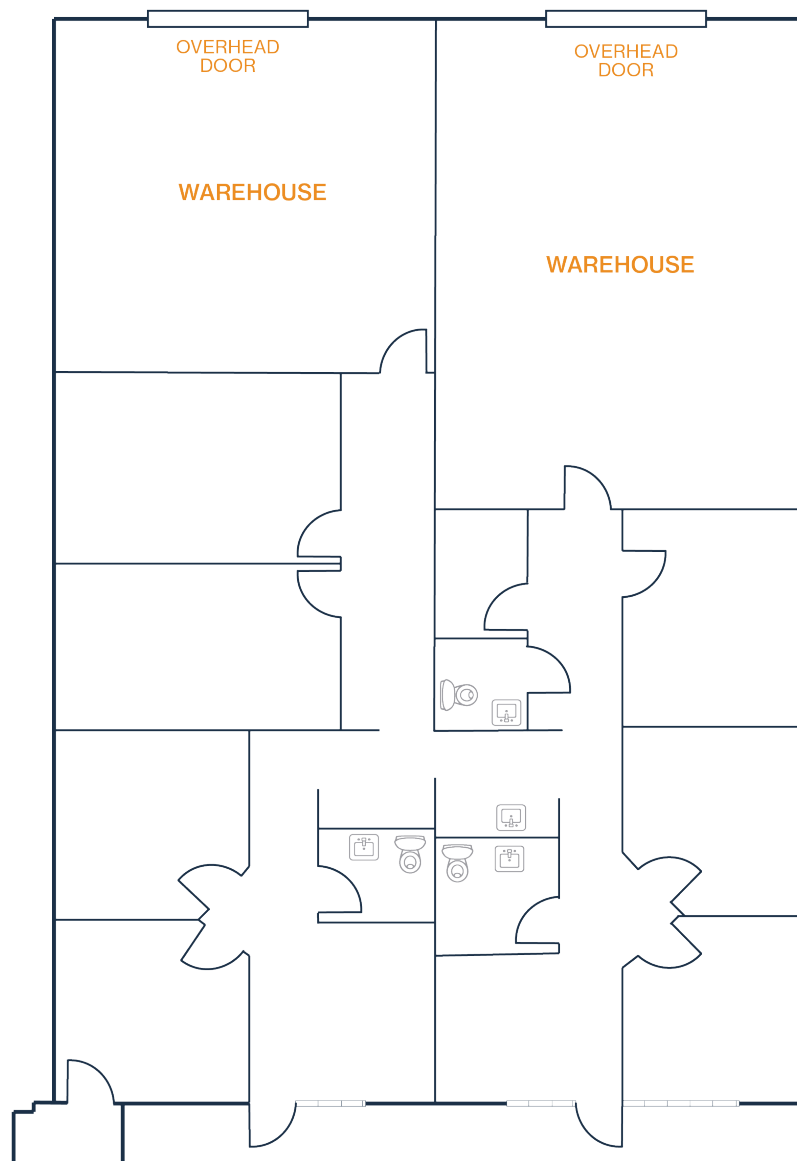
**FORT**  
LEASING

# VILLAGE GREEN CENTER

17401-17427 VILLAGE GREEN DR,  
17449-17497 VILLAGE GREEN DR  
HOUSTON, TEXAS 77040

## UNIT 17419/17421 – 3,682 SF

- 14' Clear Height
- Grade Level Loading



**RYAN YOUNG**  
281.584.3320  
ryan.young@fort-companies.com

This information is deemed reliable,  
however, Fort makes no guarantee,  
warranties, or representations as to the  
completeness or accuracy thereof.



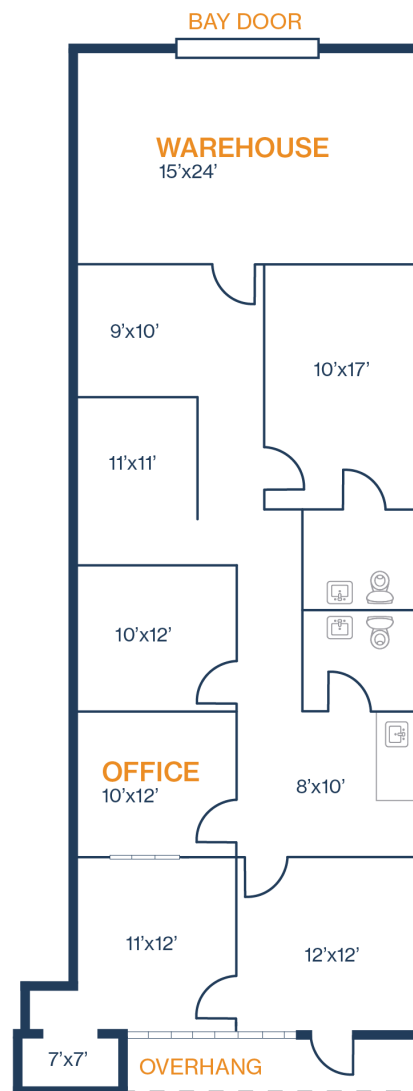
**FORT**  
LEASING

# VILLAGE GREEN CENTER

17401-17427 VILLAGE GREEN DR,  
17449-17497 VILLAGE GREEN DR  
HOUSTON, TEXAS 77040

## UNIT 17453 – 1,835 SF

- 14' Clear Height
- Grade Level Loading



**RYAN YOUNG**  
281.584.3320  
ryan.young@fort-companies.com

This information is deemed reliable,  
however, Fort makes no guarantee,  
warranties, or representations as to the  
completeness or accuracy thereof.



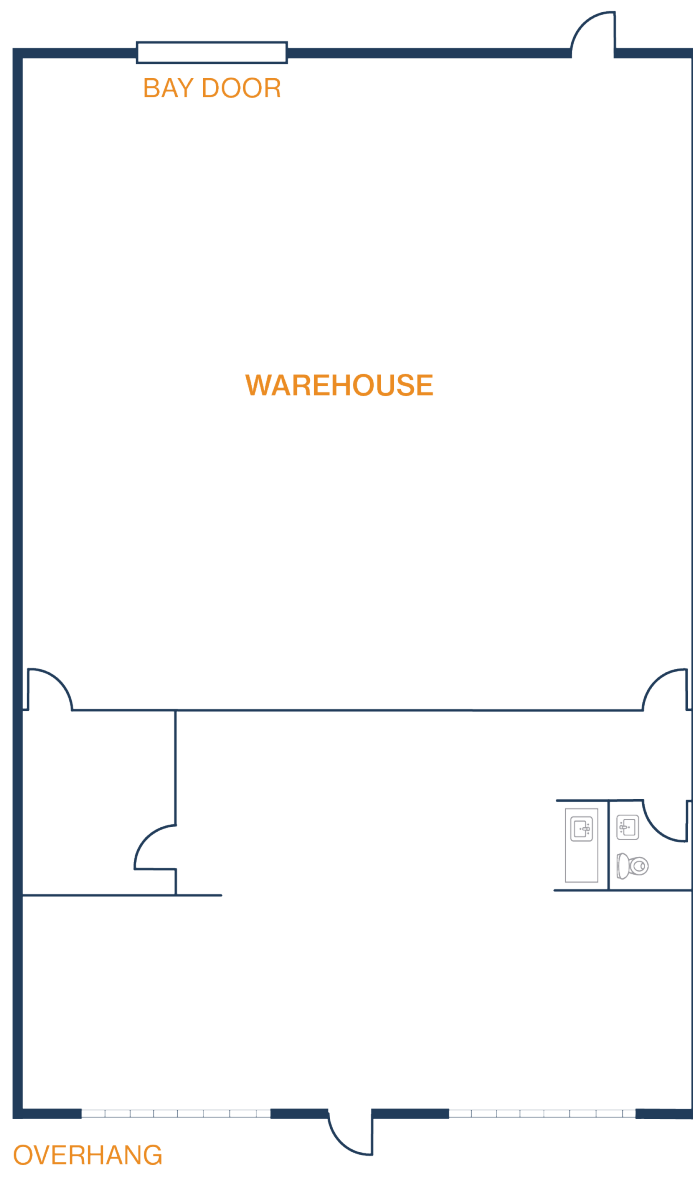
**FORT**  
LEASING

# VILLAGE GREEN CENTER

17401-17427 VILLAGE GREEN DR,  
17449-17497 VILLAGE GREEN DR  
HOUSTON, TEXAS 77040

## UNIT 17455 – 3,303 SF

- 14' Clear Height
- Grade Level Loading



**RYAN YOUNG**  
281.584.3320  
ryan.young@fort-companies.com

This information is deemed reliable,  
however, Fort makes no guarantee,  
warranties, or representations as to the  
completeness or accuracy thereof.





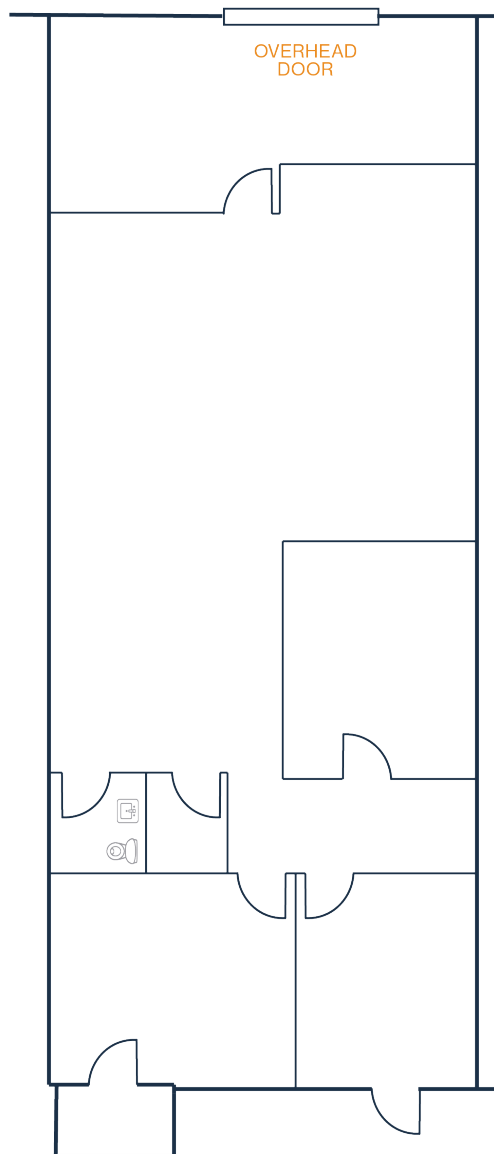
**FORT**  
LEASING

# VILLAGE GREEN CENTER

17401-17427 VILLAGE GREEN DR,  
17449-17497 VILLAGE GREEN DR  
HOUSTON, TEXAS 77040

## UNIT 17459 – 2,066 SF

- 14' Clear Height
- Grade Level Loading





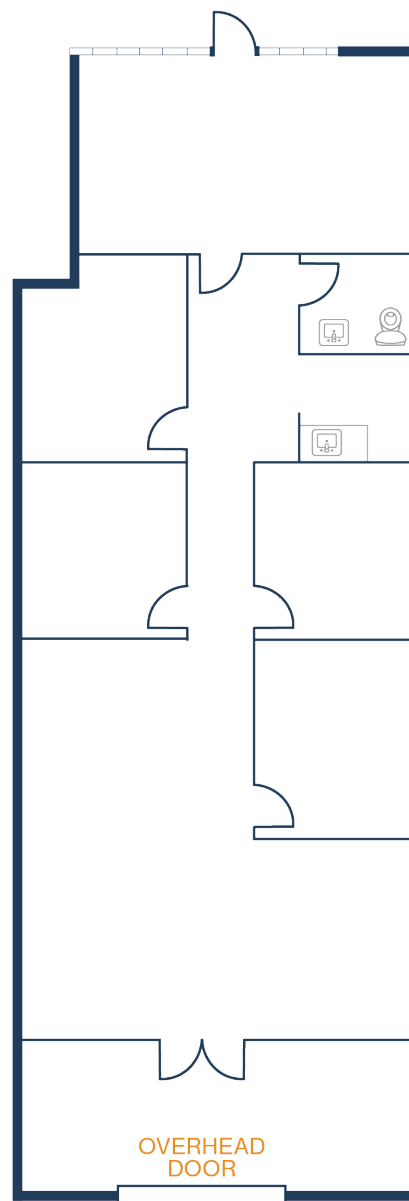
**FORT**  
LEASING

# VILLAGE GREEN CENTER

17401-17427 VILLAGE GREEN DR,  
17449-17497 VILLAGE GREEN DR  
HOUSTON, TEXAS 77040

## UNIT 17462 – 1,827 SF

- 14' Clear Height
- Grade Level Loading



**RYAN YOUNG**  
281.584.3320  
ryan.young@fort-companies.com

This information is deemed reliable,  
however, Fort makes no guarantee,  
warranties, or representations as to the  
completeness or accuracy thereof.



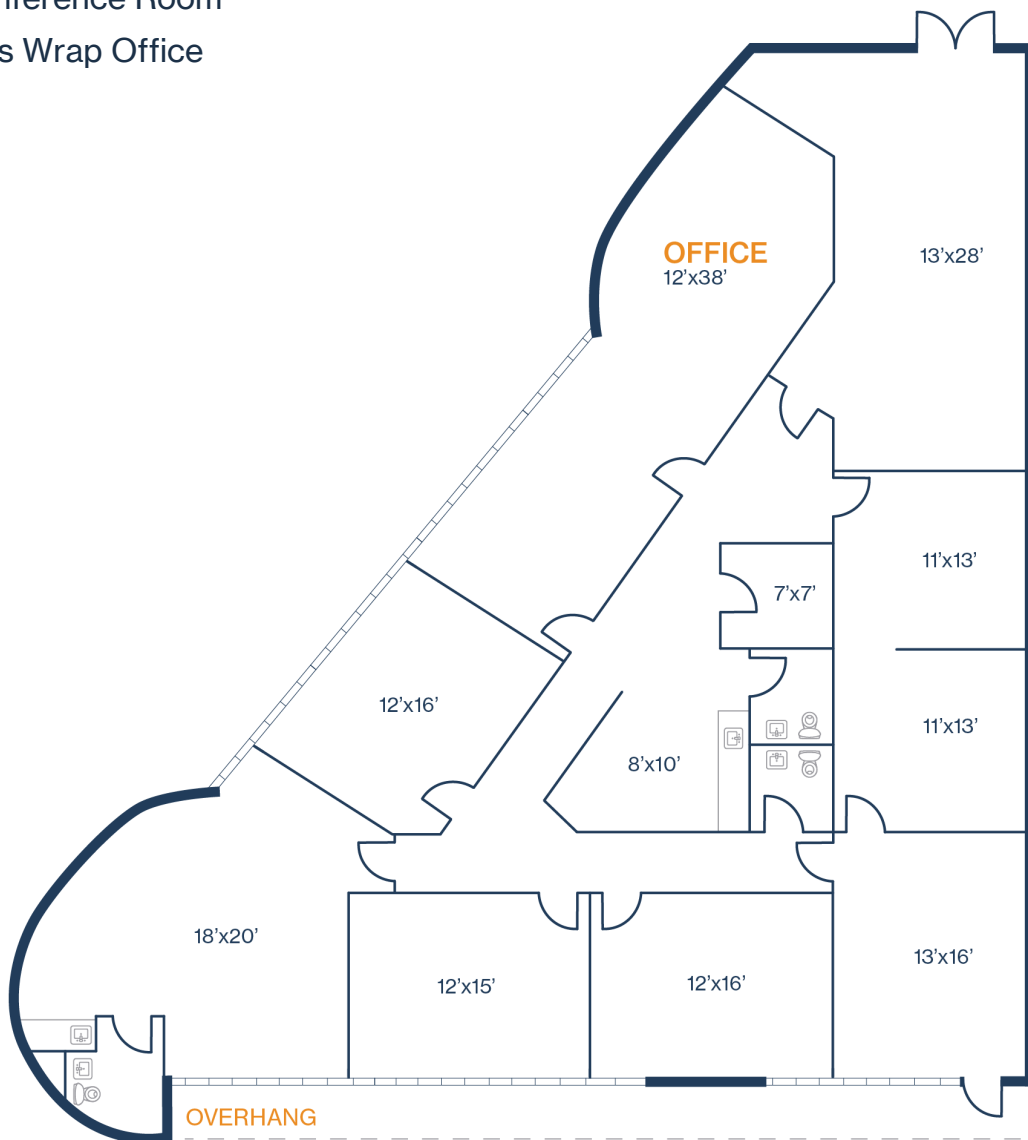
**FORT**  
LEASING

# VILLAGE GREEN CENTER

17401-17427 VILLAGE GREEN DR,  
17449-17497 VILLAGE GREEN DR  
HOUSTON, TEXAS 77040

## UNIT 17401 – 3,895 SF

- Seven Offices
- One Conference Room
- Windows Wrap Office



**RYAN YOUNG**  
281.584.3320  
ryan.young@fort-companies.com

This information is deemed reliable,  
however, Fort makes no guarantee,  
warranties, or representations as to the  
completeness or accuracy thereof.