

BERRY BROOK BUSINESS PARK

5956 – 6000 BERRY BROOK DRIVE, HOUSTON, TX 77017



**SOUTHEAST HOUSTON
OUTER LOOP SUBMARKET**



18' CLEAR HEIGHT



GRADE-LEVEL LOADING



9K SF OF OUTSIDE STORAGE



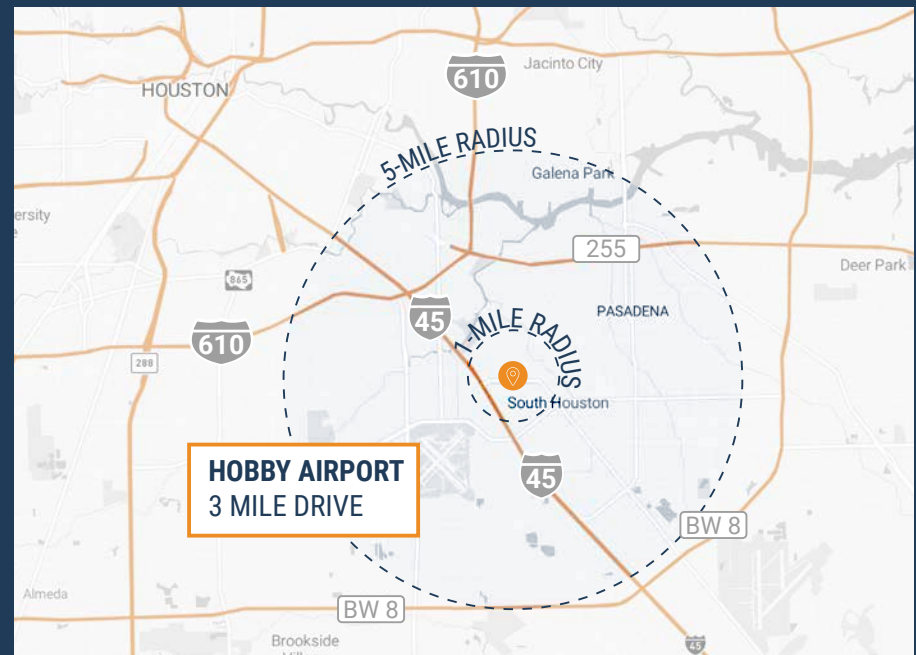
AMPLE TENANT PARKING



SINGLE-TENANT BUILDINGS



RECENTLY RENOVATED



THOMAS PFEIFER



281.504.7460



THOMAS.PFEIFER@FORT-COMPANIES.COM



FORT CAPITAL

This information is deemed reliable, however, Fort Capital makes no guarantee, warranties, or representations as to the completeness or accuracy thereof.

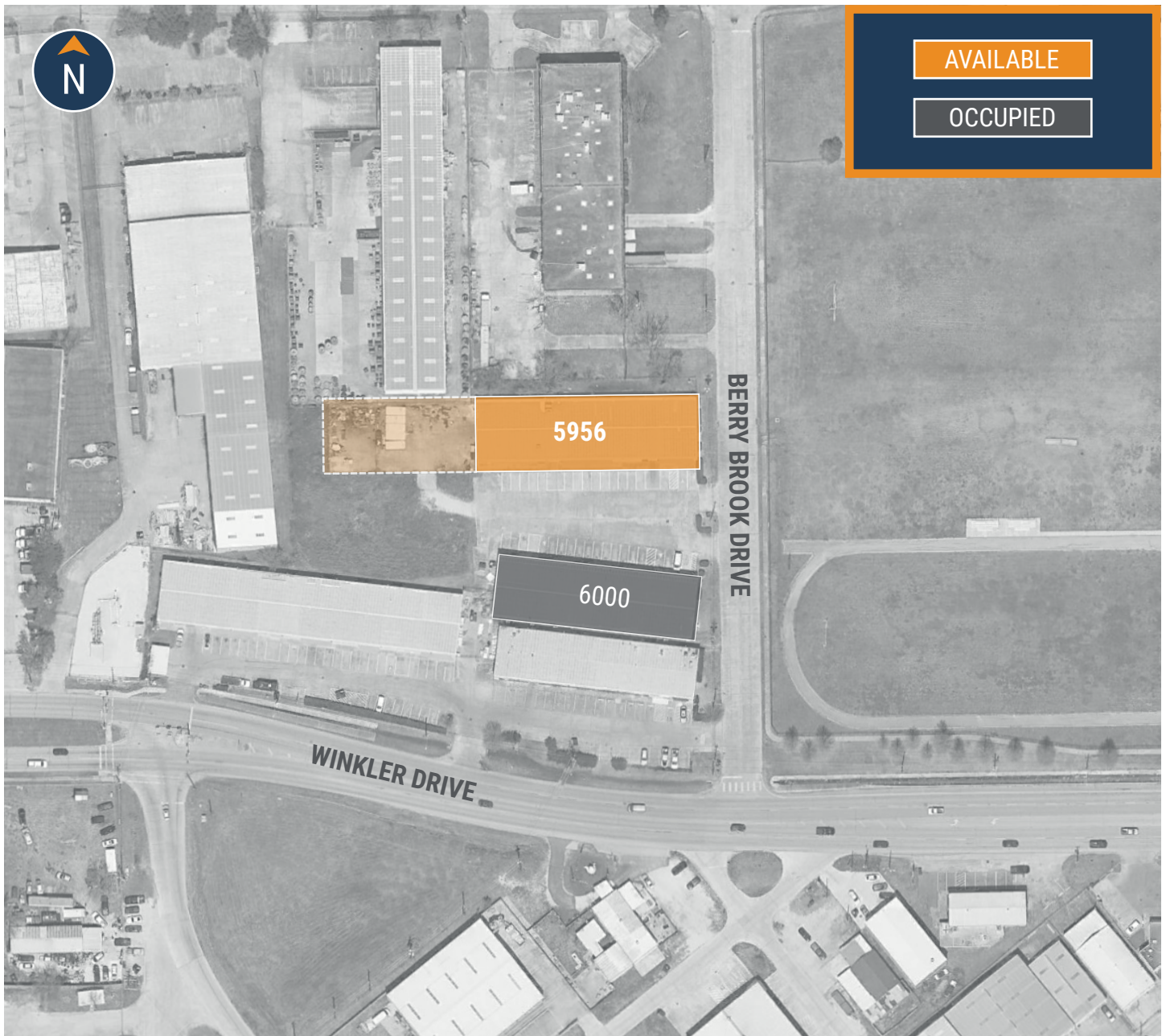


FORT CAPITAL

BERRY BROOK BUSINESS PARK

5956 – 6000 Berry Brook Drive
Houston, TX 77017

SITE PLAN



THOMAS PFEIFER



281.504.7460



THOMAS.PFEIFER@FORT-COMPANIES.COM

This information is deemed reliable, however, Fort Capital makes no guarantee, warranties, or representations as to the completeness or accuracy thereof.



FLOOR PLAN – AVAILABLE IMMEDIATELY

- » 13,500 SF Total Available
- » 1,680 SF Office
- » 11,820 SF Warehouse
- » 9,000 SF Outside Fenced Storage
- » (2) 12' x 14' Grade Level Doors
- » (1) 14' x 20' Grade Level Doors
- » Upgraded LED Lighting



**All SF labels are approximations

THOMAS PFEIFER



281.504.7460



THOMAS.PFEIFER@FORT-COMPANIES.COM