

# KEOUGH BUSINESS PARK

9230 KEOUGH ROAD, HOUSTON, TX 77040



**NORTHWEST HOUSTON/  
OUTERLOOP SUBMARKET**



**GREAT ACCESS TO BELTWAY 8  
AND US-290**



**18' CLEAR HEIGHT**



**12' X 14' GRADE-LEVEL  
LOADING DOORS**



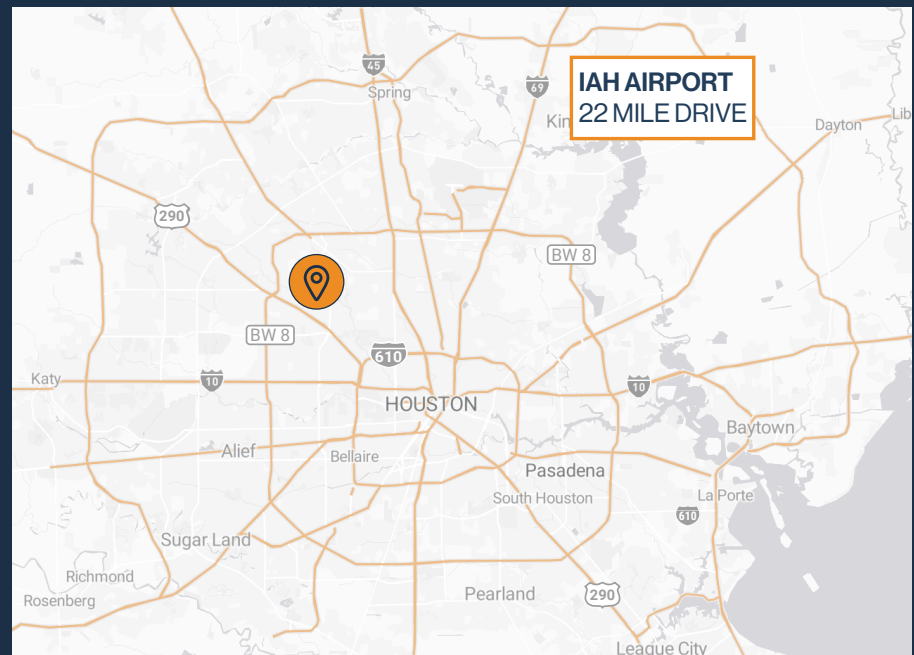
**3-PHASE POWER**



**GATED ACCESS**



**1,885 SF – 2,750 SF  
SUITES AVAILABLE**



**RYAN YOUNG**



281.584.3320



RYAN.YOUNG@FORT-COMPANIES.COM

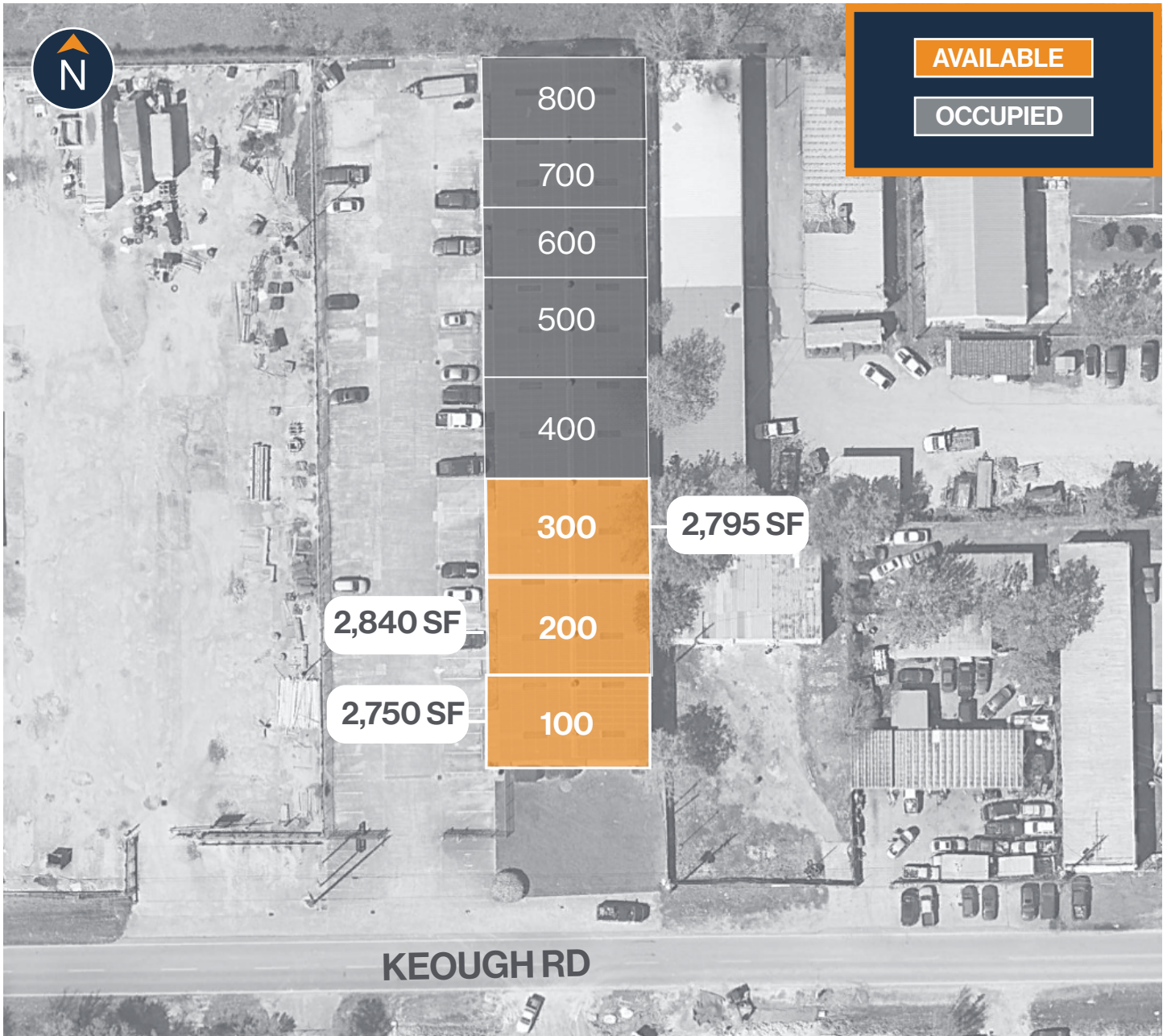


**FORT**  
LEASING

This information is deemed reliable, however, Fort makes no guarantee, warranties, or representations as to the completeness or accuracy thereof.



### SITE PLAN



**RYAN YOUNG**



281.584.3320

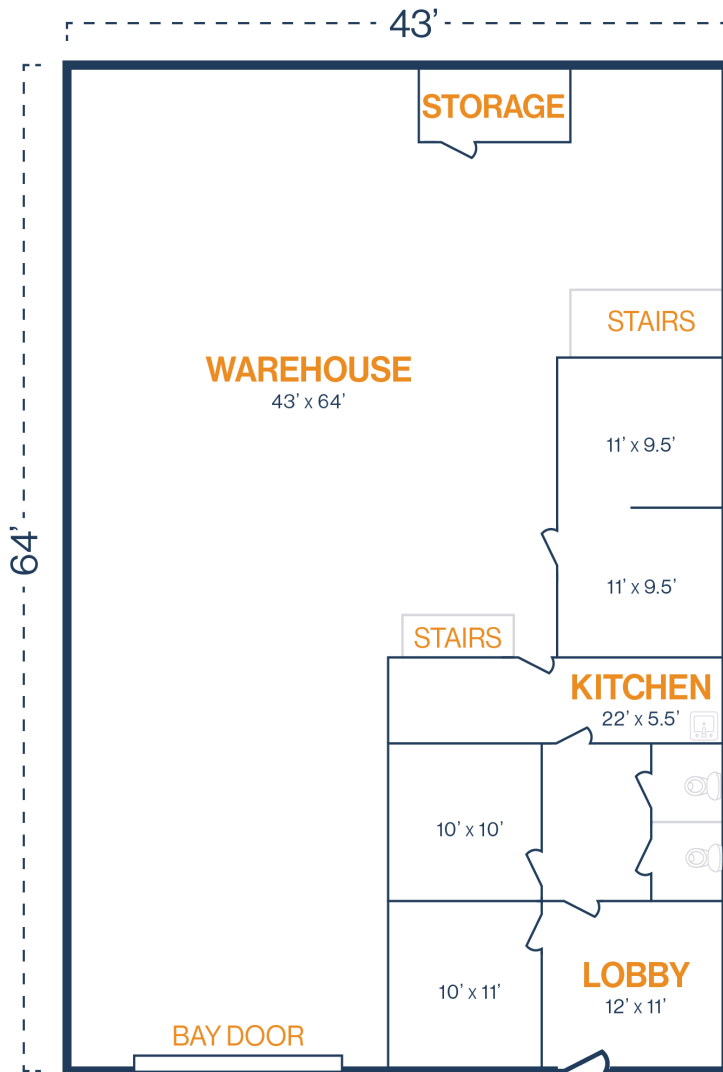


RYAN.YOUNG@FORT-COMPANIES.COM

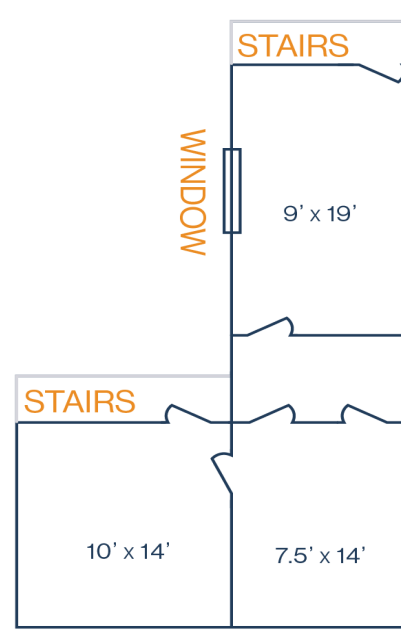


## FLOOR PLAN — AVAILABLE IMMEDIATELY

- » 2,750 SF Total Available
- » 830 SF Downstairs Office
- » 454 SF Upstairs Office
- » 1,947 SF Warehouse
- » (1) 12' x 14' Grade-Level Door
- » 3 Phase Power (240 V)



### UPSTAIRS:



**RYAN YOUNG**



281.584.3320

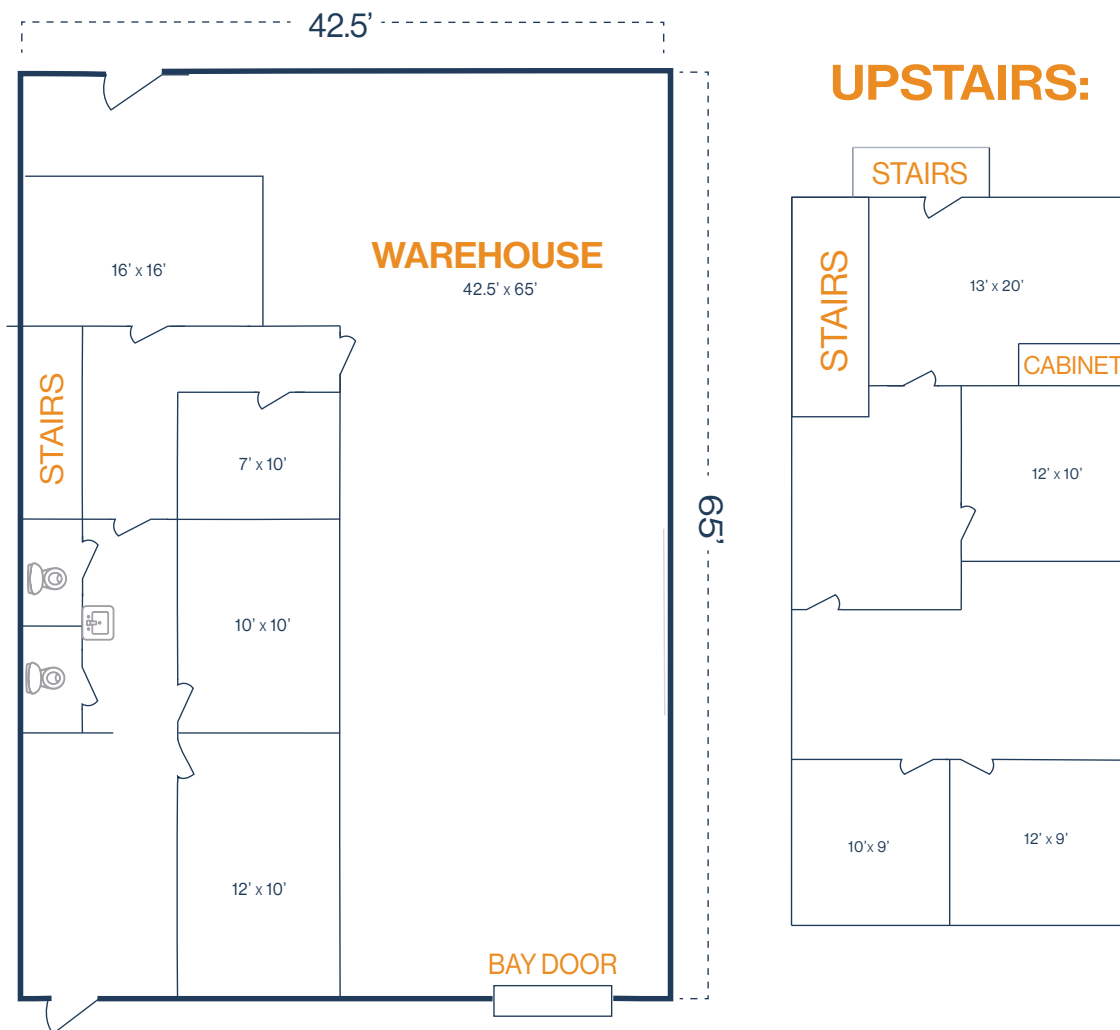


RYAN.YOUNG@FORT-COMPANIES.COM



## FLOOR PLAN — AVAILABLE IMMEDIATELY

» 2,840 SF Total Available



**RYAN YOUNG**



281.584.3320

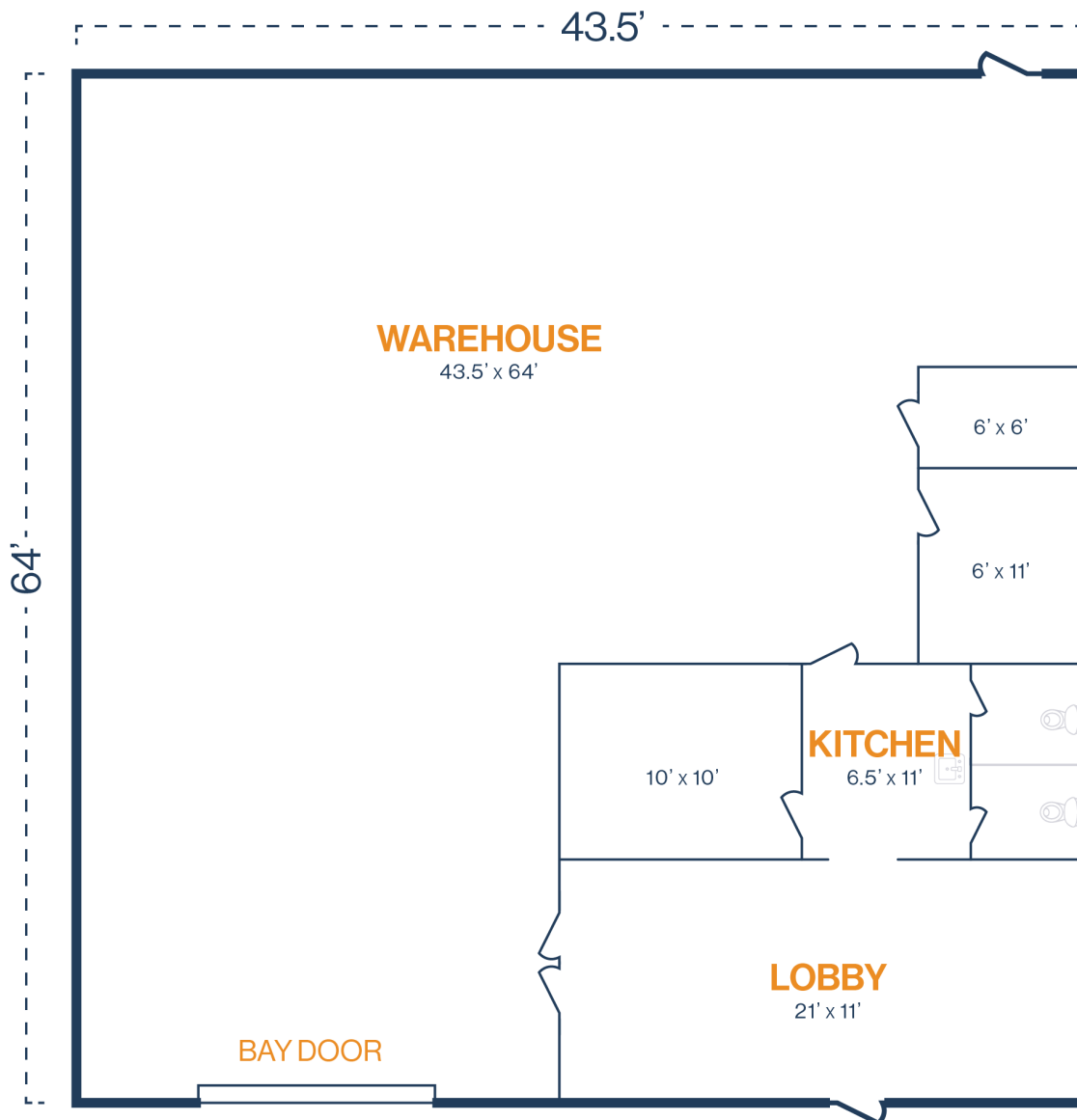


RYAN.YOUNG@FORT-COMPANIES.COM



## FLOOR PLAN — AVAILABLE IMMEDIATELY

- » 2,795 SF Total Available
- » 543 SF Office
- » 2,252 SF Warehouse
- » (1) 12' x 14' Grade-Level Door



**RYAN YOUNG**



281.584.3320



RYAN.YOUNG@FORT-COMPANIES.COM