

KIRKWOOD TECH CENTER

12705 S KIRKWOOD ROAD, STAFFORD, TX 77477



**SOUTHWEST HOUSTON/
SUGAR LAND SUBMARKET**



**GREAT ACCESS TO I-69
AND US-90**



13' CLEAR HEIGHT



**CLIMATE-CONTROLLED
WAREHOUSE**



GLASS STOREFRONT



10' X 10' GRADE-LEVEL LOADING



**2,420 SF - 2,778 SF
SUITES AVAILABLE**



RYAN YOUNG



281.584.3320



RYAN.YOUNG@FORT-COMPANIES.COM



FORT CAPITAL

This information is deemed reliable, however, Fort Capital makes no guarantee, warranties, or representations as to the completeness or accuracy thereof.

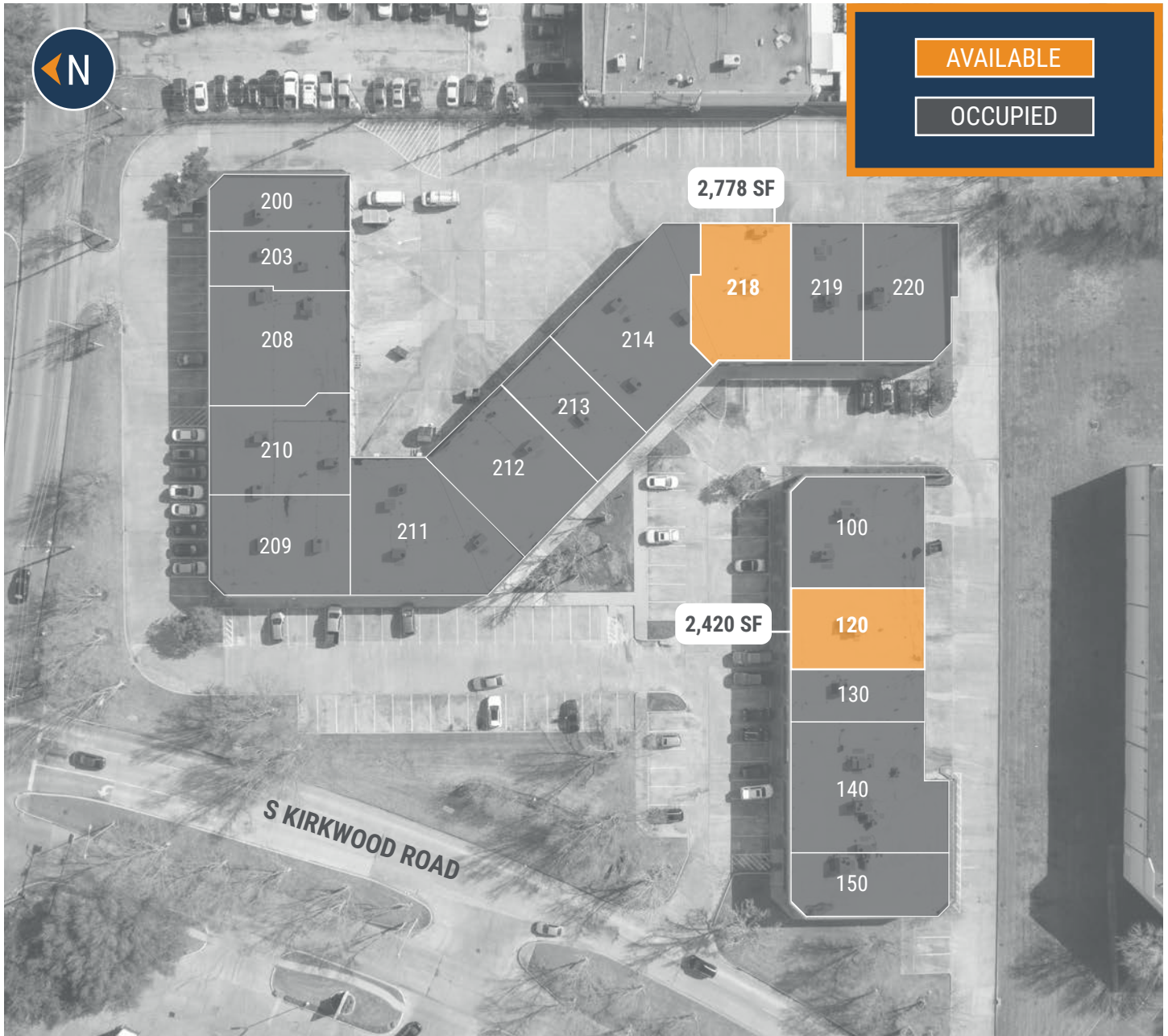


FORT CAPITAL

KIRKWOOD TECH CENTER

12705 S Kirkwood Road
Stafford, TX 77477

SITE PLAN



RYAN YOUNG



281.584.3320



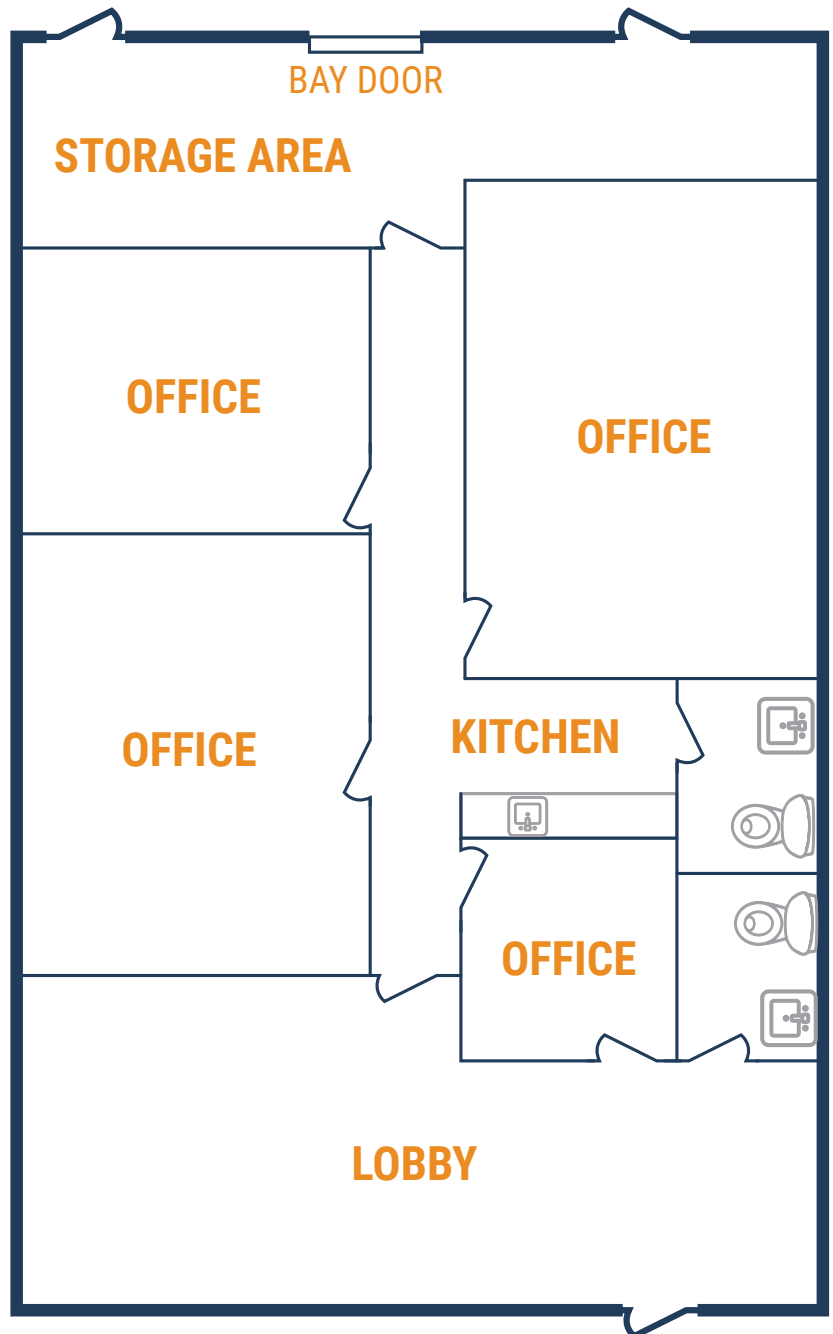
RYAN.YOUNG@FORT-COMPANIES.COM

This information is deemed reliable, however, Fort Capital makes no guarantee, warranties, or representations as to the completeness or accuracy thereof.



FLOOR PLAN – AVAILABLE IMMEDIATELY

- » 2,420 SF Total Available
- » 100% Office
- » (1) 10' x 10' Grade-Level Door



RYAN YOUNG



281.584.3320

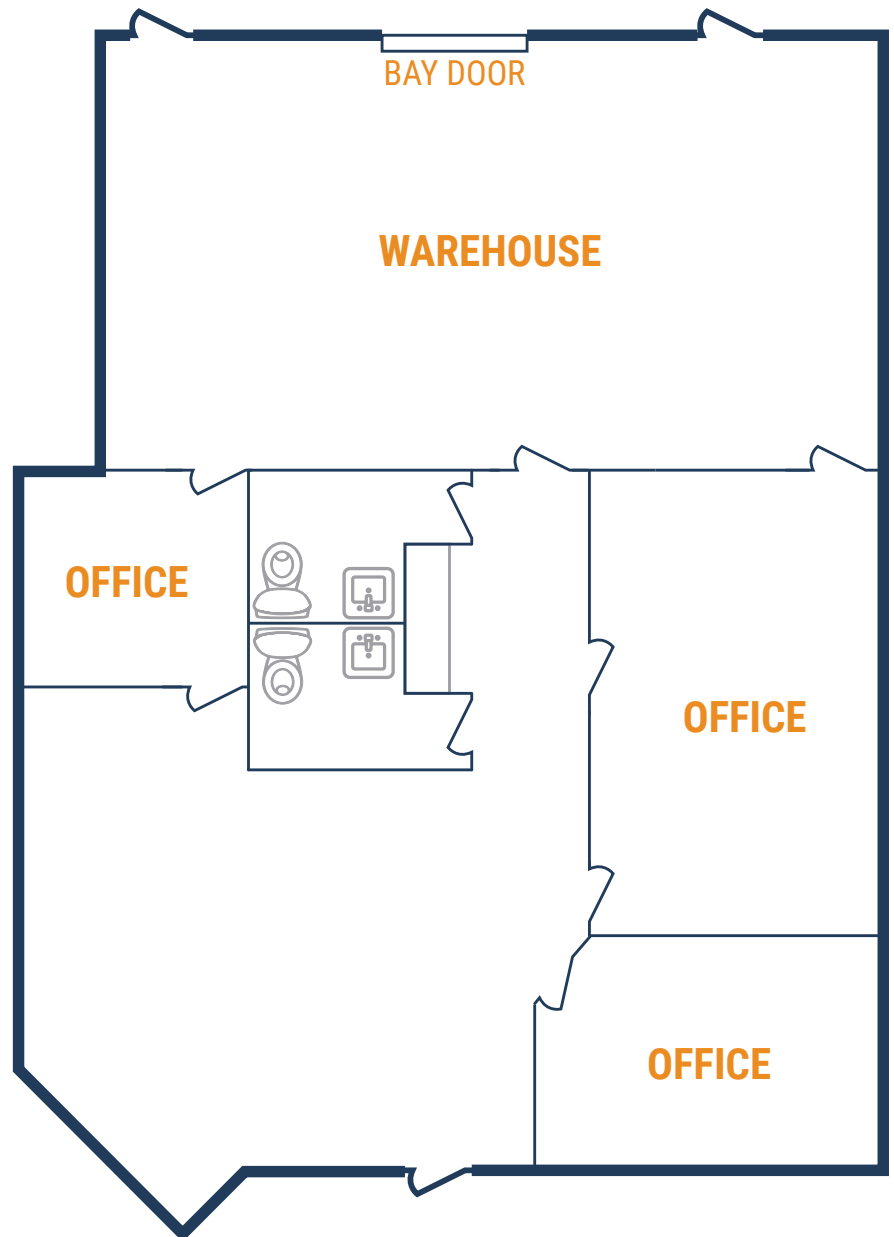


RYAN.YOUNG@FORT-COMPANIES.COM



FLOOR PLAN – AVAILABLE IMMEDIATELY

- » 2,778 SF Total Available
- » 1,178 SF Office
- » 1,600 SF Warehouse
- » (1) 10' x 10' Grade-Level Door
- » Climate-Controlled Warehouse



RYAN YOUNG



281.584.3320



RYAN.YOUNG@FORT-COMPANIES.COM