

CORPORATE PARK WEST

1718 NORTH FRY ROAD, HOUSTON, TX 77041



**WEST HOUSTON/ENERGY
CORRIDOR SUBMARKET**



**GREAT ACCESS TO I-10
AND FRY ROAD**



14-17' & 25' CLEAR HEIGHTS



TILT-WALL CONSTRUCTION



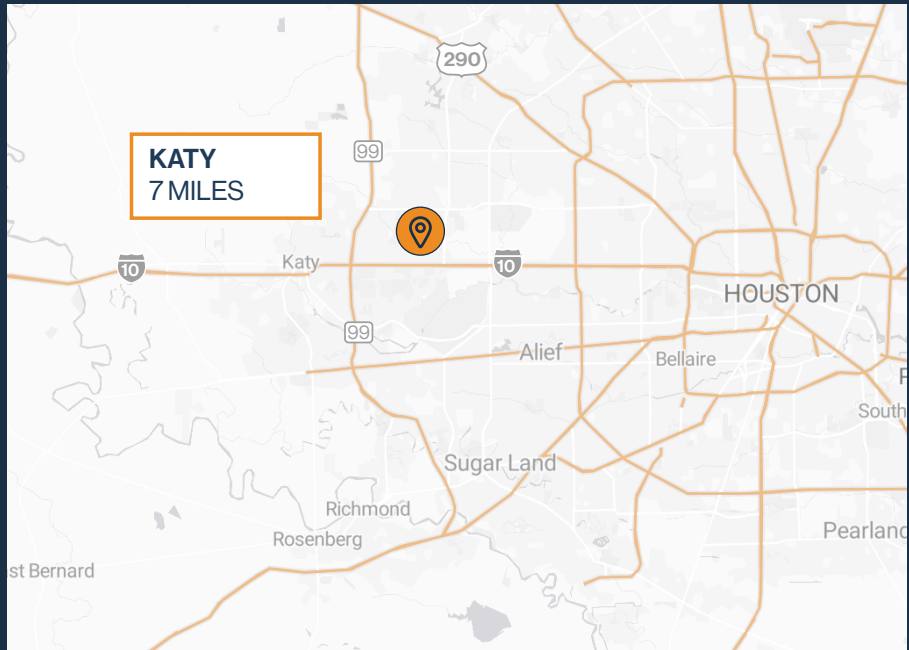
**DOCK-HIGH AND SEMI-DOCK
LOADING**



DRIVE-UP SURFACE PARKING



**1,982 SF – 10,611 SF
SUITES AVAILABLE**



RYAN YOUNG



281.584.3320



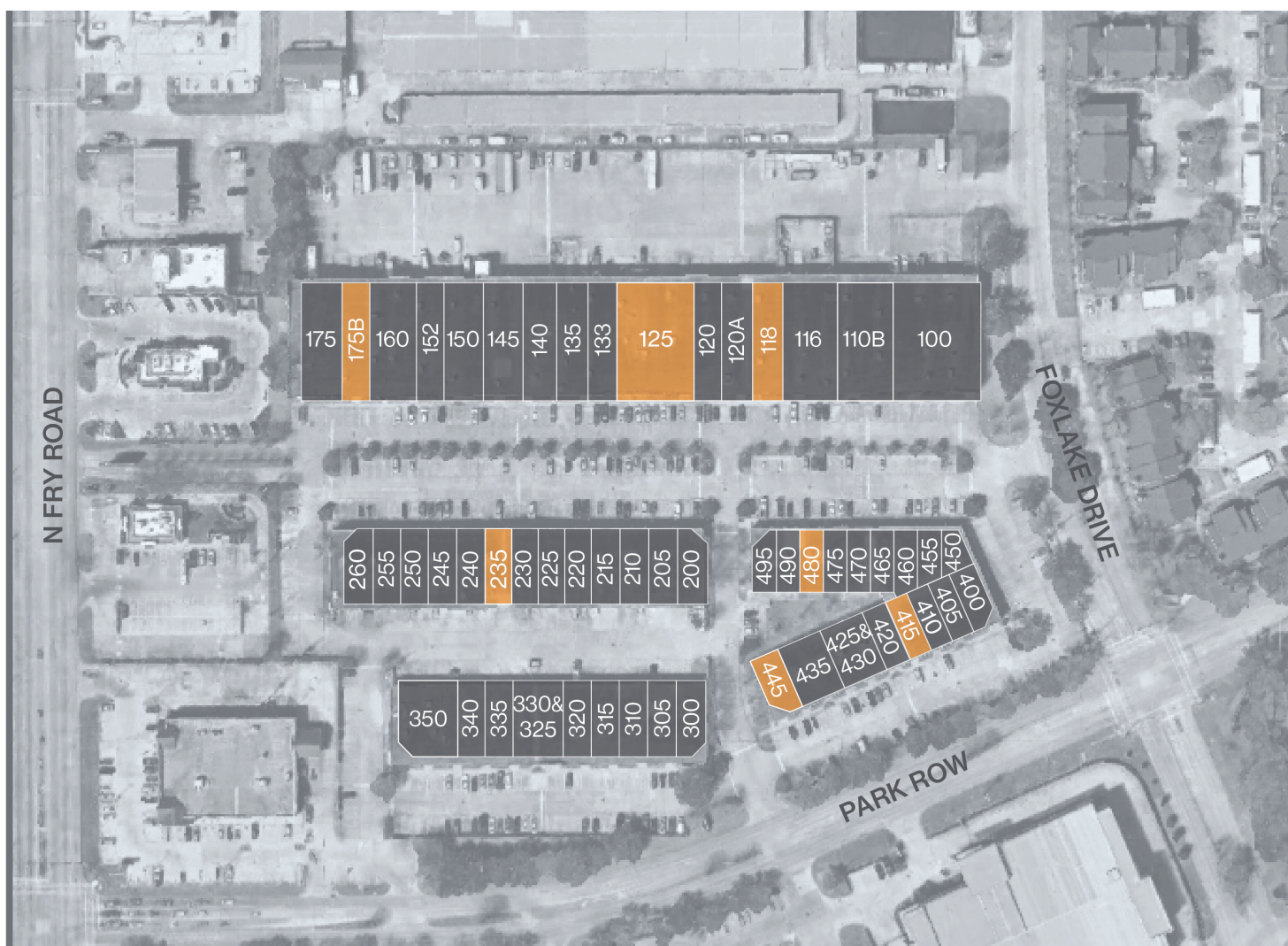
RYAN.YOUNG@FORT-COMPANIES.COM



FORT
LEASING

This information is deemed reliable, however, Fort makes no guarantee, warranties, or representations as to the completeness or accuracy thereof.

SITE PLAN





FORT
LEASING

CORPORATE PARK WEST

1718 N FRY RD
HOUSTON, TEXAS 77084

UNIT 118 – 3,854 SF

2,467 SF OFFICE / 1,387 SF WAREHOUSE



RYAN YOUNG
281.584.3320
ryan.young@fort-companies.com

This information is deemed reliable,
however, Fort makes no guarantee,
warranties, or representations as to the
completeness or accuracy thereof.



FORT
LEASING

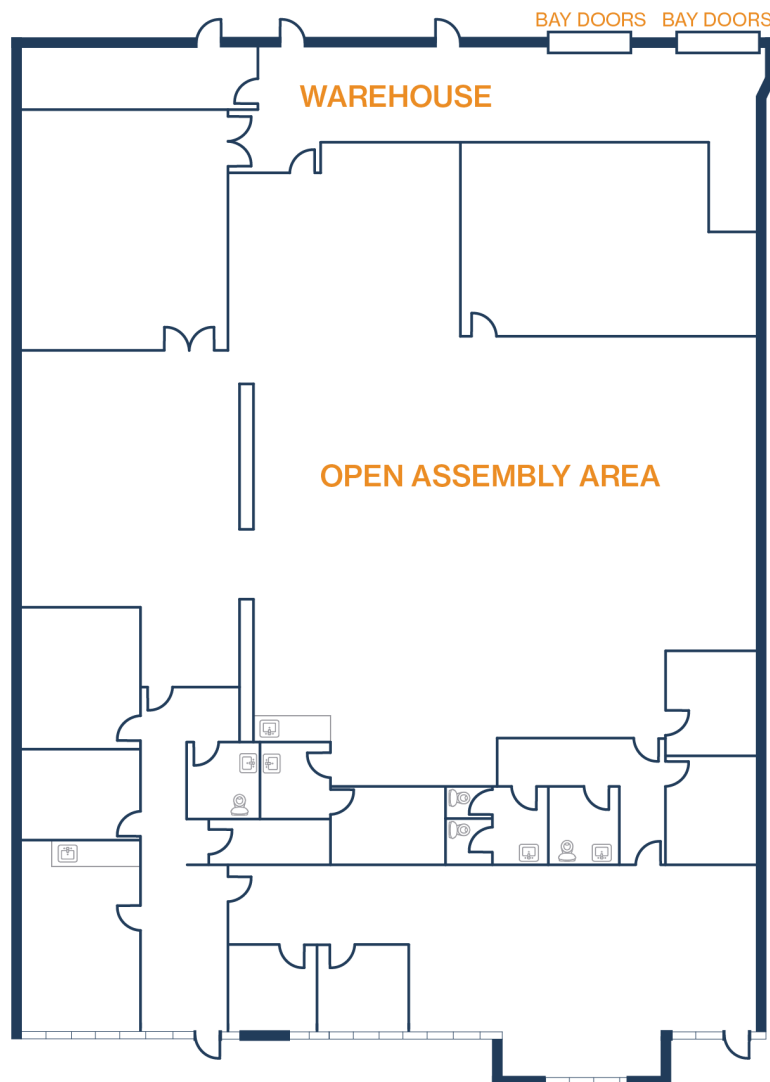
CORPORATE PARK WEST

1718 N FRY RD
HOUSTON, TEXAS 77084

UNIT 125 – 10,611 SF

9,573 SF OFFICE / 1,038 SF WAREHOUSE

- 25' Clear Height
- 2 Dock Doors, Dock High Door Loading



RYAN YOUNG
281.584.3320
ryan.young@fort-companies.com

This information is deemed reliable,
however, Fort makes no guarantee,
warranties, or representations as to the
completeness or accuracy thereof.



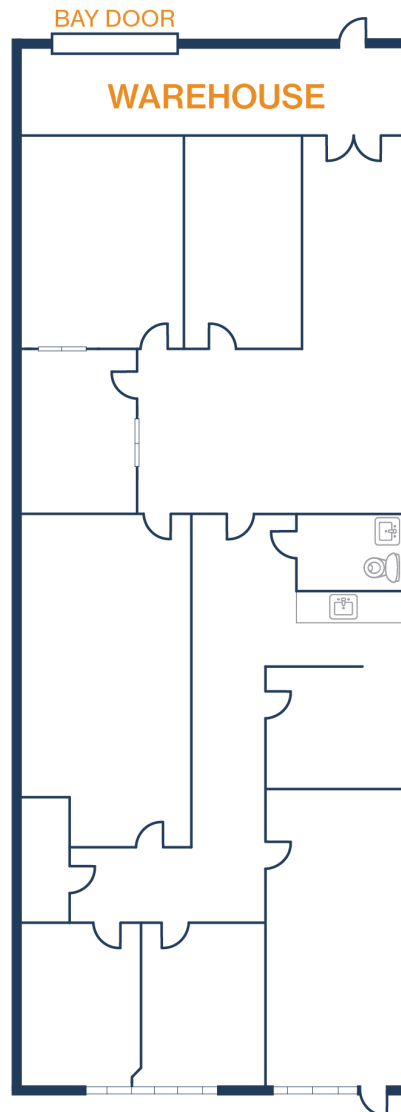
FORT
LEASING

CORPORATE PARK WEST

1718 N FRY RD
HOUSTON, TEXAS 77084

UNIT 235 – 2,400 SF

2,176 SF OFFICE / 224 SF WAREHOUSE



RYAN YOUNG

281.584.3320

ryan.young@fort-companies.com

This information is deemed reliable, however, Fort makes no guarantee, warranties, or representations as to the completeness or accuracy thereof.



FORT
LEASING

CORPORATE PARK WEST

1718 N FRY RD
HOUSTON, TEXAS 77084

UNIT 175B – 3,236 SF

809 SF OFFICE / 2,427 SF WAREHOUSE



RYAN YOUNG
281.584.3320
ryan.young@fort-companies.com

This information is deemed reliable, however, Fort makes no guarantee, warranties, or representations as to the completeness or accuracy thereof.



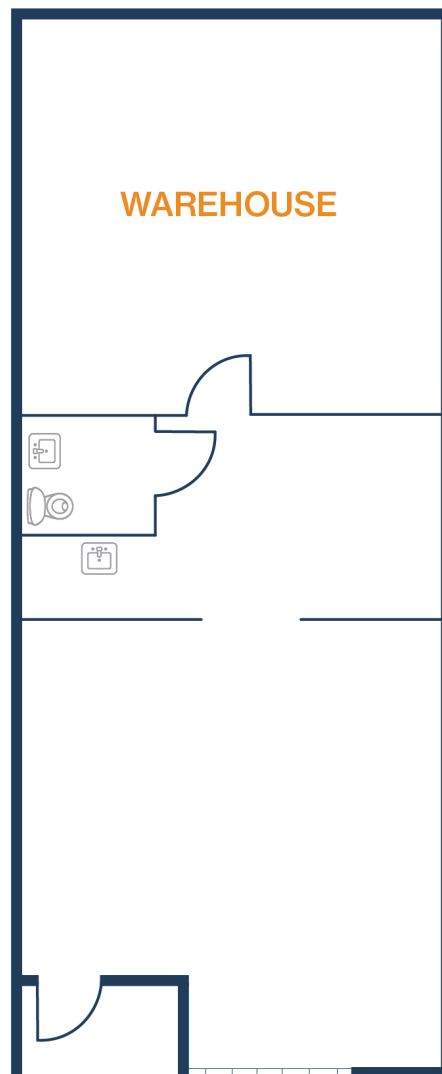
FORT
LEASING

CORPORATE PARK WEST

1718 N FRY RD
HOUSTON, TEXAS 77084

UNIT 415 – 1,625 SF

1,625 SF OFFICE / 0 SF WAREHOUSE





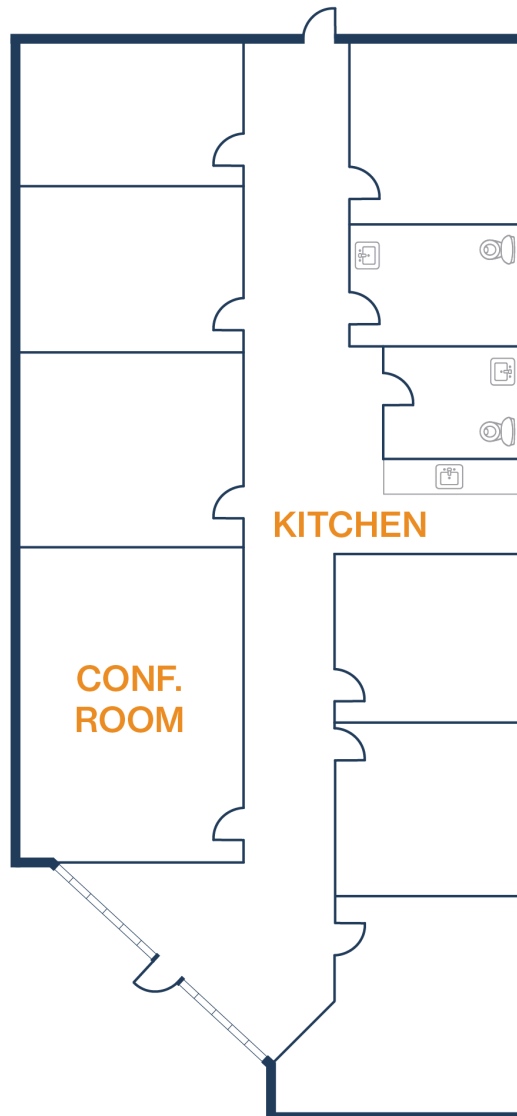
FORT
LEASING

CORPORATE PARK WEST

1718 N FRY RD
HOUSTON, TEXAS 77084

UNIT 445 – 1,982 SF

1,982 SF OFFICE / 0 SF WAREHOUSE



RYAN YOUNG
281.584.3320
ryan.young@fort-companies.com

This information is deemed reliable, however, Fort makes no guarantee, warranties, or representations as to the completeness or accuracy thereof.



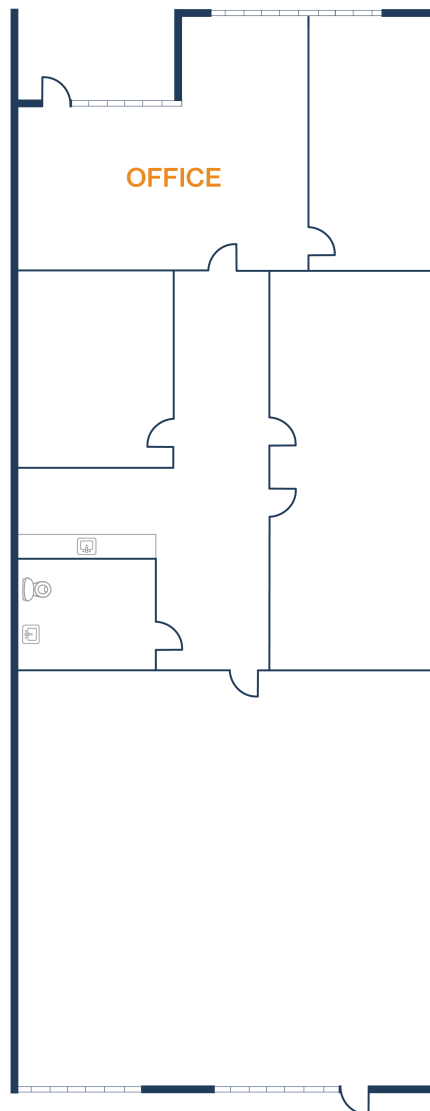
FORT
LEASING

CORPORATE PARK WEST

1718 N FRY RD
HOUSTON, TEXAS 77084

UNIT 480 – 1,625 SF

1,625 SF OFFICE / 0 SF WAREHOUSE



RYAN YOUNG
281.584.3320
ryan.young@fort-companies.com

This information is deemed reliable,
however, Fort makes no guarantee,
warranties, or representations as to the
completeness or accuracy thereof.