

SOUTHWEST BUSINESS PARK

11000 STANCLIFF ROAD & 10325 – 10415 LANDSBURY DRIVE,
HOUSTON, TX 77099



**SOUTHWEST HOUSTON/
SUGAR LAND SUBMARKET**



**GREAT ACCESS TO BELTWAY 8
AND I-69**



12' – 18' CLEAR HEIGHT



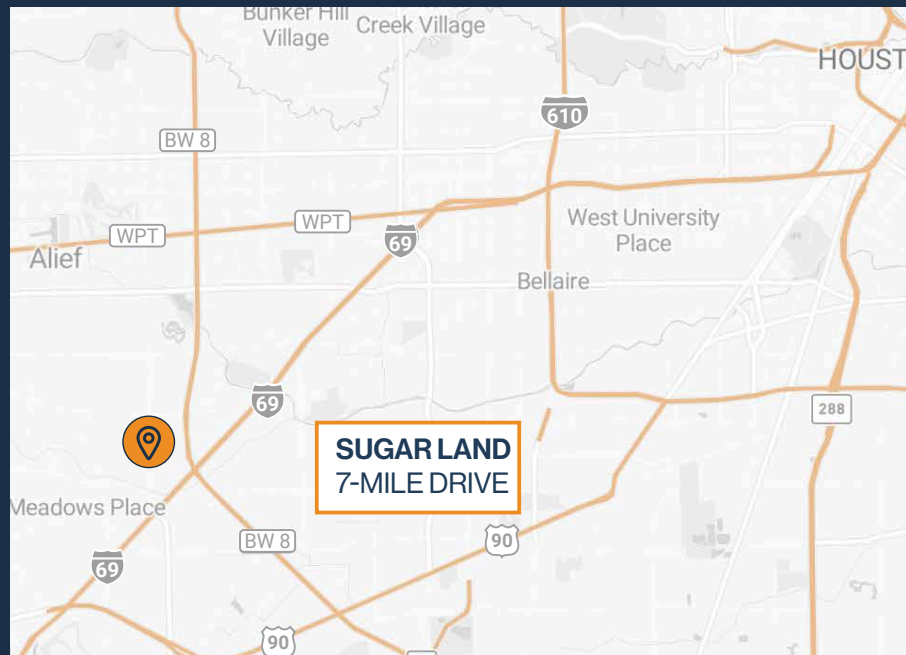
**DOCK-HIGH, SEMI-DOCK, AND
GRADE LEVEL LOADING**



FENCED YARD SPACE



2,250 SF – 15,000 SF SUITES



THOMAS PFEIFER



281.504.7460



THOMAS.PFEIFER@FORT-COMPANIES.COM



FORT
LEASING

This information is deemed reliable, however, Fort makes no guarantee, warranties, or representations as to the completeness or accuracy thereof.

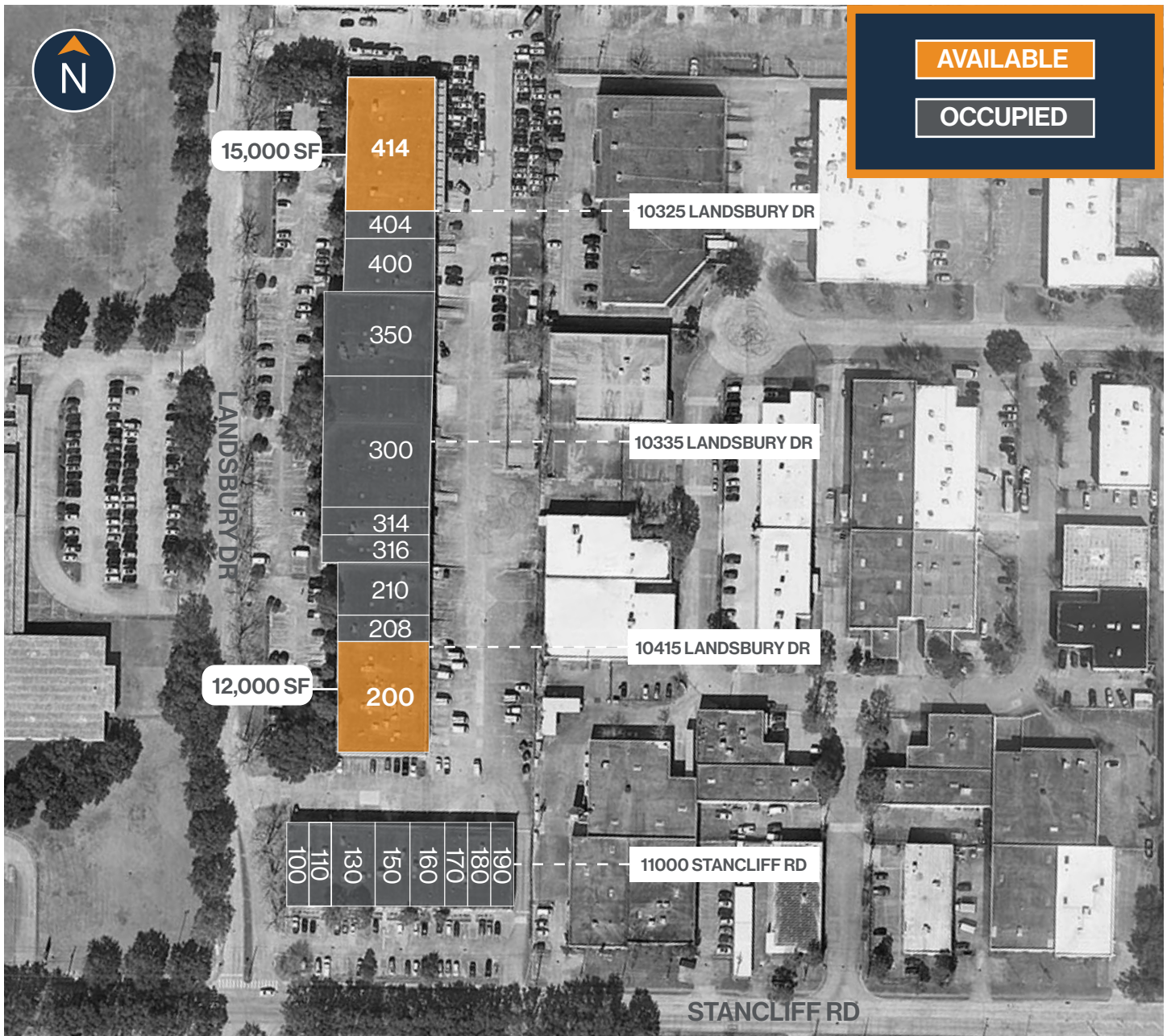


FORT
LEASING

SOUTHWEST BUSINESS

11000 Stancliff Road & 10325 – 10415 Landsbury Drive
Houston, TX 77099

SITE PLAN



THOMAS PFEIFER



281.504.7460



THOMAS.PFEIFER@FORT-COMPANIES.COM

This information is deemed reliable, however, Fort makes no guarantee, warranties, or representations as to the completeness or accuracy thereof.



FORT
LEASING

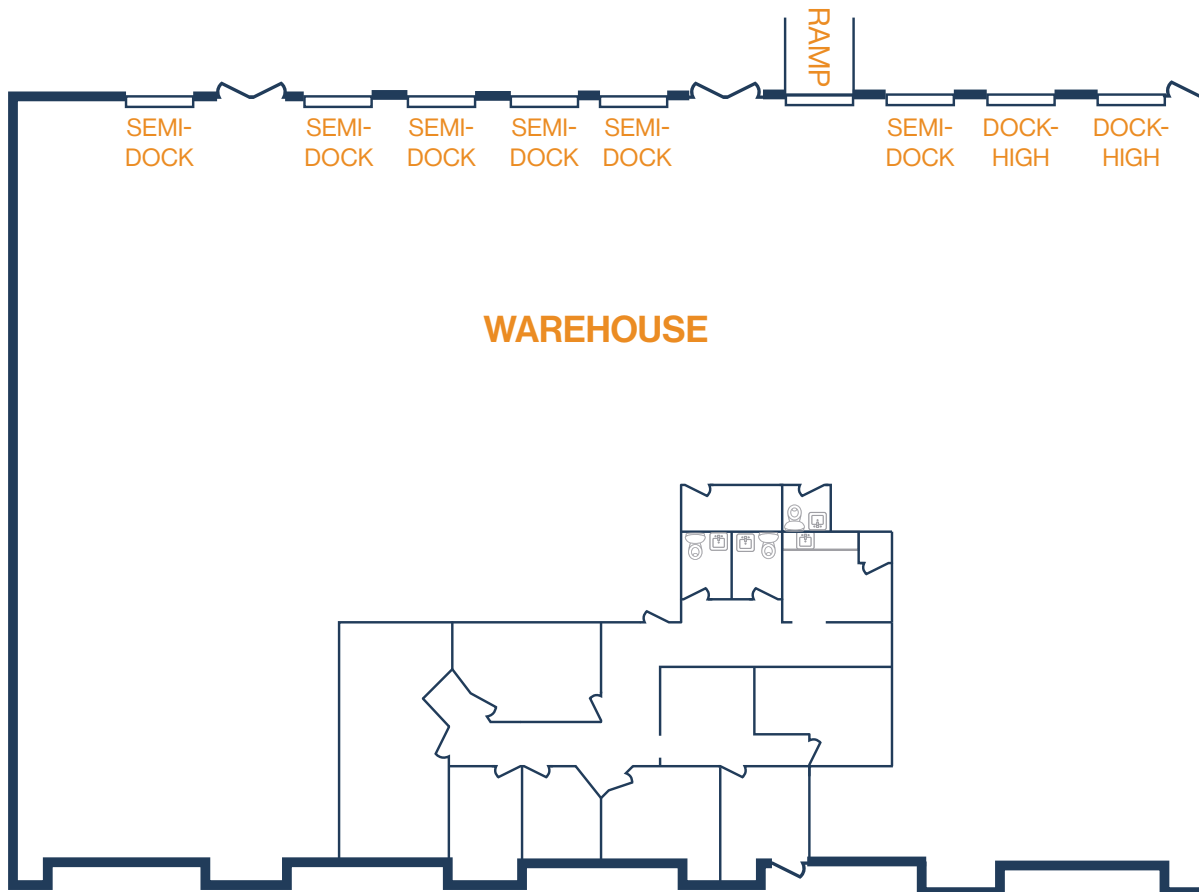
SOUTHWEST BUSINESS

10325 Landsbury Drive, Suite 414

Houston, TX 77099

FLOOR PLAN — AVAILABLE IMMEDIATELY

- » 15,000 SF Total Available
- » 3,010 SF Office
- » 11,990 SF Warehouse
- » 16' Clear Height
- » (2) Dock-High Doors
- » (6) Semi-Dock Doors
- » (1) Ramp
- » 5,500 SF Fenced Yard



**All SF labels are approximations

THOMAS PFEIFER



281.504.7460



THOMAS.PFEIFER@FORT-COMPANIES.COM

This information is deemed reliable, however, Fort makes no guarantee, warranties, or representations as to the completeness or accuracy thereof.



FORT
LEASING

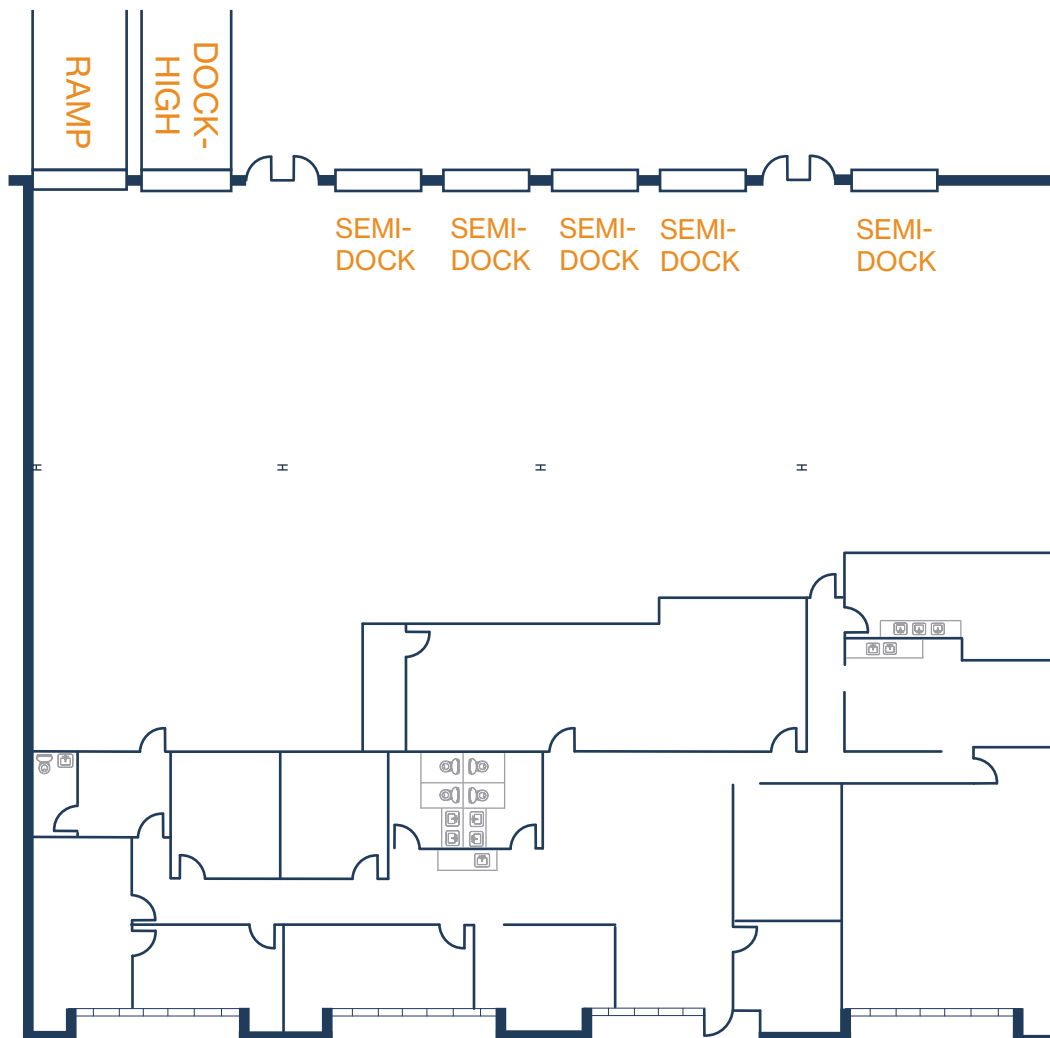
SOUTHWEST BUSINESS

10415 Landsbury Drive, Suite 200

Houston, TX 77099

FLOOR PLAN — AVAILABLE IMMEDIATELY

- » 12,000 SF Total Available
- » 5,495 SF Office
- » 6,505 SF Warehouse
- » (5) Semi-Dock Doors
- » (1) Ramp
- » (1) Dock-High Door
- » Fenced Outside Storage Available



THOMAS PFEIFER



281.504.7460



THOMAS.PFEIFER@FORT-COMPANIES.COM

This information is deemed reliable, however, Fort makes no guarantee, warranties, or representations as to the completeness or accuracy thereof.