

# SOUTHWEST BUSINESS PARK

11000 STANCLIFF ROAD & 10325 – 10415 LANDSBURY DRIVE,  
HOUSTON, TX 77099



**SOUTHWEST HOUSTON/  
SUGAR LAND SUBMARKET**



**GREAT ACCESS TO BELTWAY 8  
AND I-69**



**12' – 18' CLEAR HEIGHT**



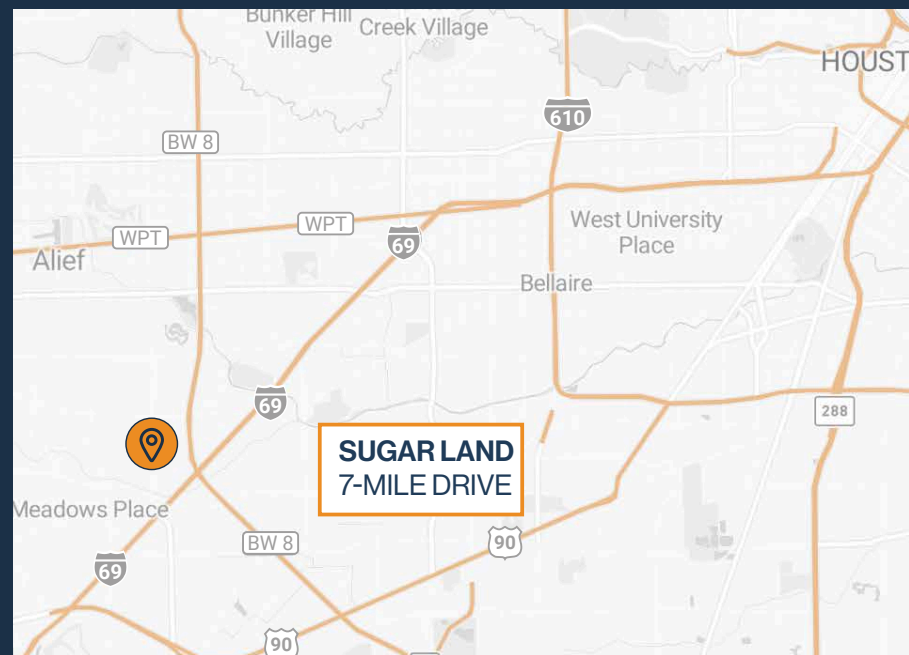
**DOCK-HIGH, SEMI-DOCK, AND  
GRADE LEVEL LOADING**



**FENCED YARD SPACE**



**2,250 SF – 15,000 SF SUITES**



**THOMAS PFEIFER**



281.504.7460



THOMAS.PFEIFER@FORT-COMPANIES.COM

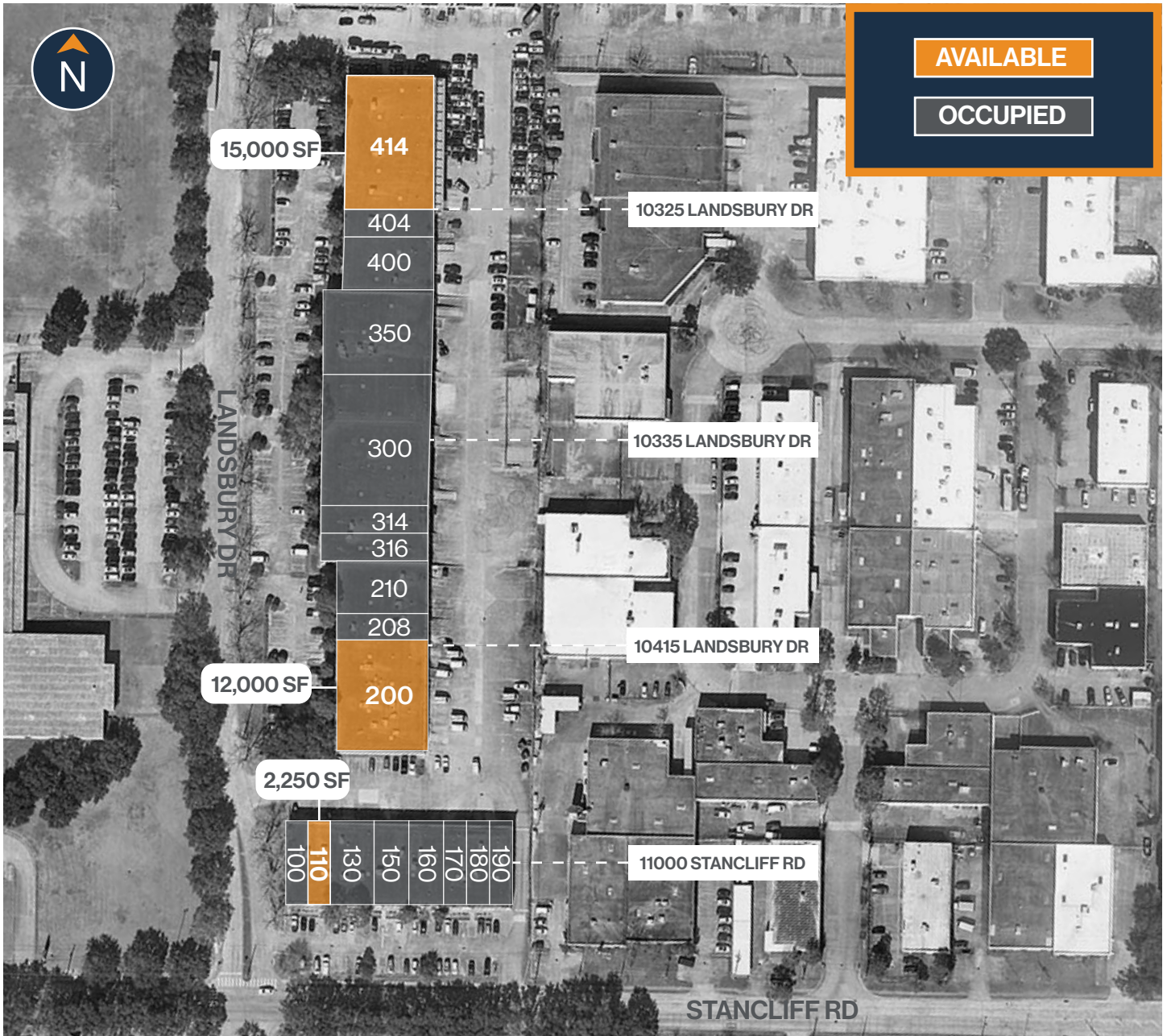


**FORT**  
LEASING

This information is deemed reliable, however, Fort makes no guarantee, warranties, or representations as to the completeness or accuracy thereof.



### SITE PLAN



## THOMAS PFEIFER



281.504.7460



THOMAS.PFEIFER@FORT-COMPANIES.COM

## FLOOR PLAN — AVAILABLE IMMEDIATELY

- » 2,250 SF Total Available
- » 750 SF Office
- » 1,300 SF HVAC Warehouse/Production
- » 200 SF Warehouse
- » (1) Grade level Door



\*\*All SF labels are approximations

**THOMAS PFEIFER**



281.504.7460

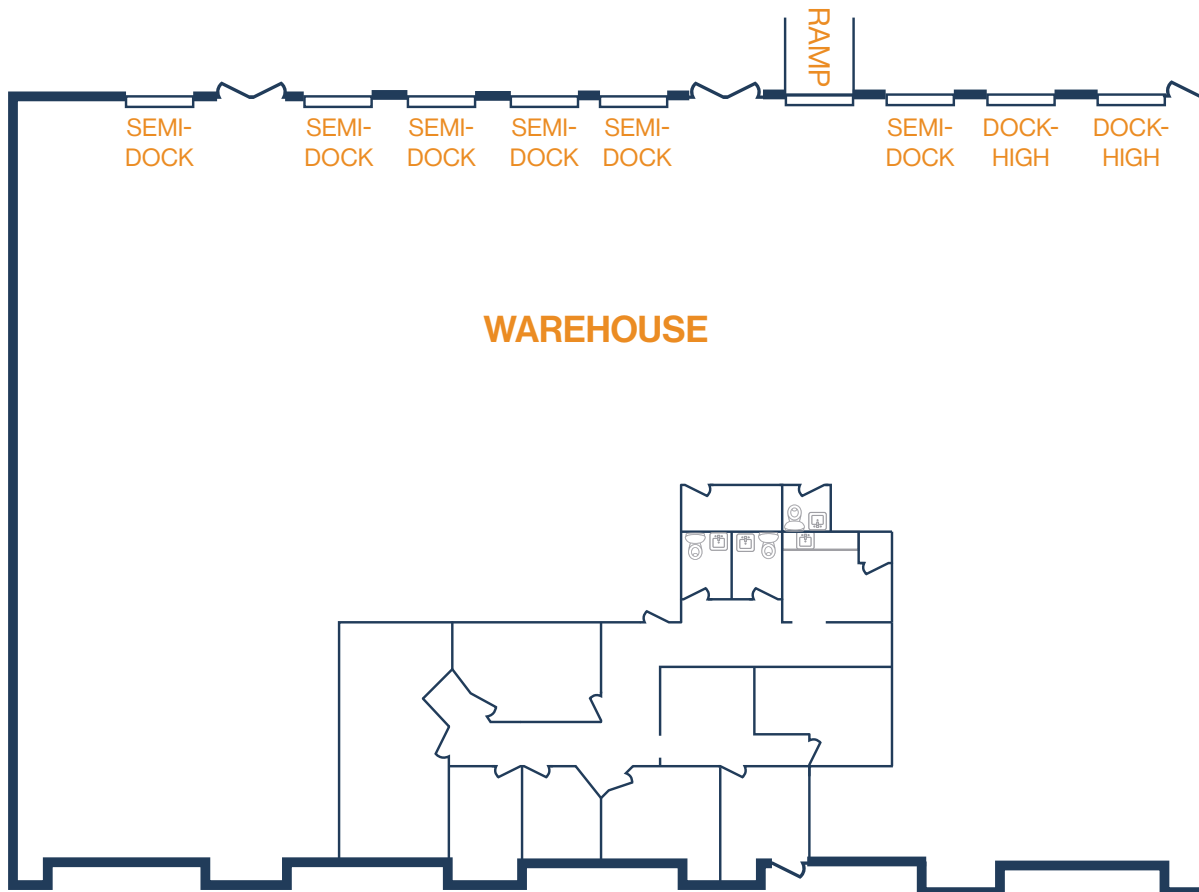


THOMAS.PFEIFER@FORT-COMPANIES.COM



## FLOOR PLAN — AVAILABLE IMMEDIATELY

- » 15,000 SF Total Available
- » 3,010 SF Office
- » 11,990 SF Warehouse
- » 16' Clear Height
- » (2) Dock-High Doors
- » (6) Semi-Dock Doors
- » (1) Ramp
- » 5,500 SF Fenced Yard



\*\*All SF labels are approximations

**THOMAS PFEIFER**



281.504.7460

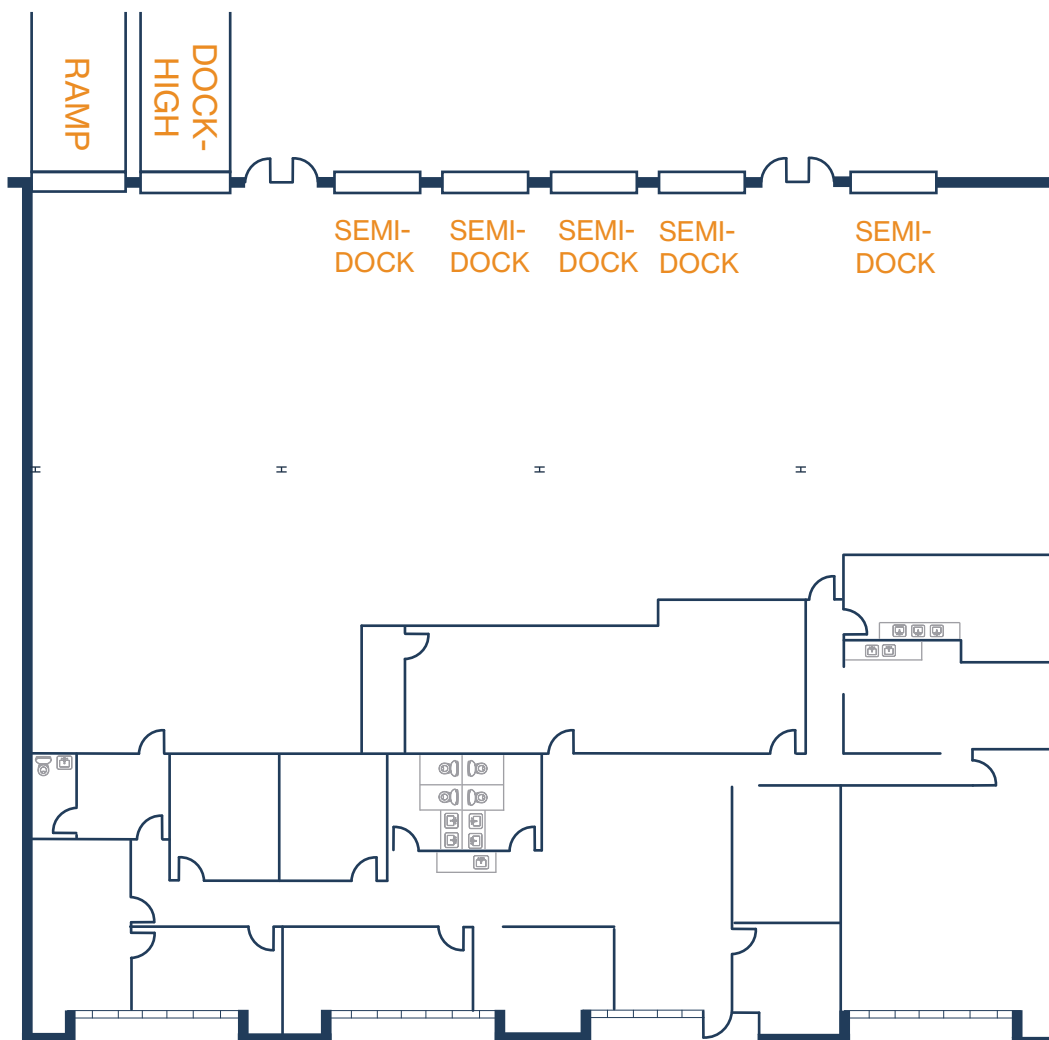


THOMAS.PFEIFER@FORT-COMPANIES.COM



## FLOOR PLAN — AVAILABLE IMMEDIATELY

- » 12,000 SF Total Available
- » 5,495 SF Office
- » 6,505 SF Office
- » (5) Semi-Dock Doors
- » (1) Ramp
- » (1) Dock-High Door
- » Fenced Outside Storage Available



**THOMAS PFEIFER**



281.504.7460



THOMAS.PFEIFER@FORT-COMPANIES.COM