

# WESTBELT PLAZA

1450 W SAM HOUSTON PKY N, 10694 &  
10696 HADDINGTON DR, HOUSTON, TX 77025



**NORTHWEST OUTER LOOP  
SUBMARKET**



**GREAT ACCESS TO BELT-  
WAY 8 AND I-10**



**14' CLEAR HEIGHT**



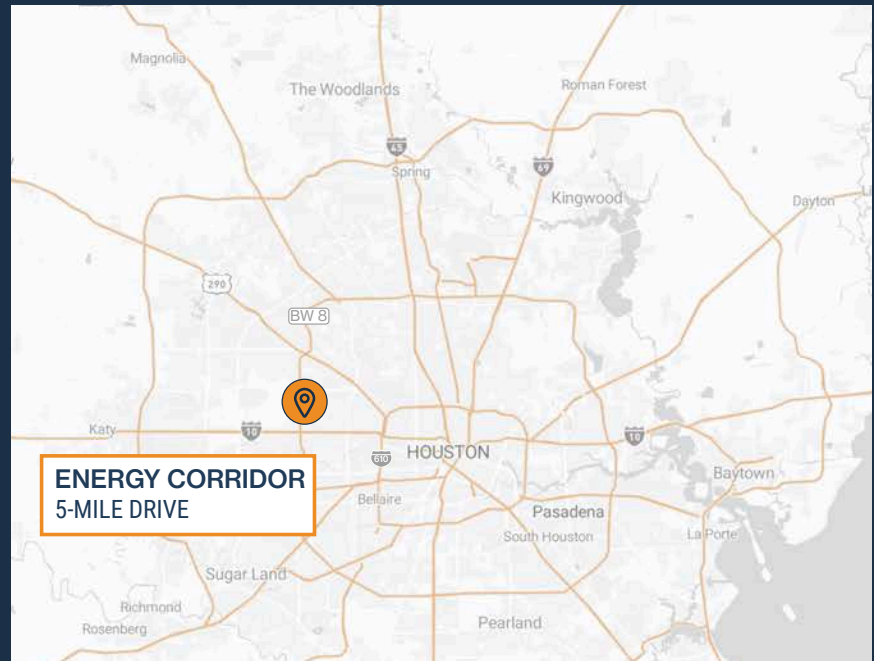
**3 PHASE POWER**



**GRADE-LEVEL AND  
SEMI-DOCK LOADING**



**2,002 SF – 5,449 SF  
SUITES AVAILABLE**



**RYAN YOUNG**



281.584.3320



RYAN.YOUNG@FORT-COMPANIES.COM



**FORT**  
LEASING

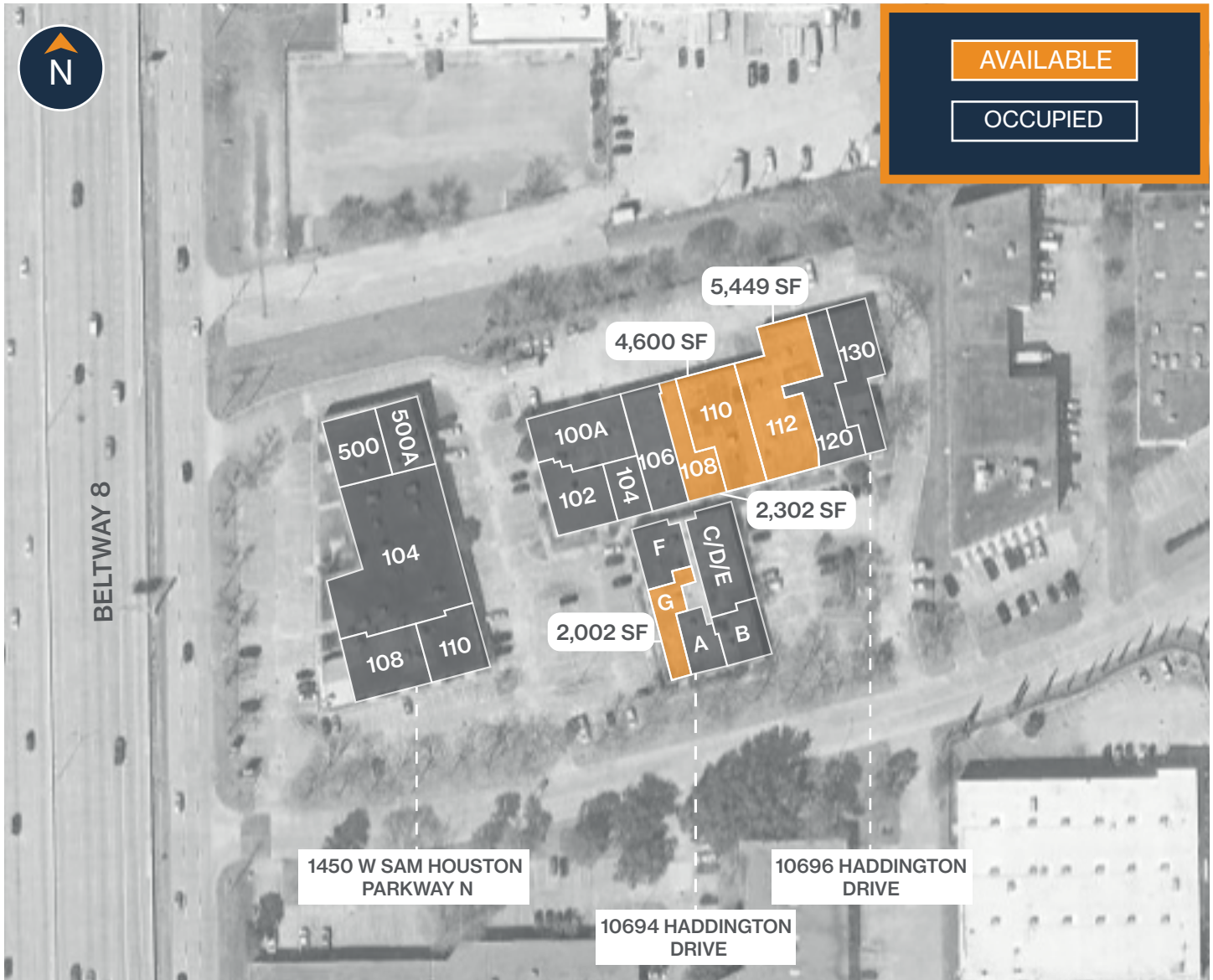
This information is deemed reliable, however, Fort makes no guarantee, warranties, or representations as to the completeness or accuracy thereof.



**FORT**  
LEASING

**WESTBELT PLAZA**  
1450 W Sam Houston Pky N, 10694 & 10696 Haddington Dr,  
Houston, TX 77025

## SITE PLAN



**RYAN YOUNG**



281.584.3320



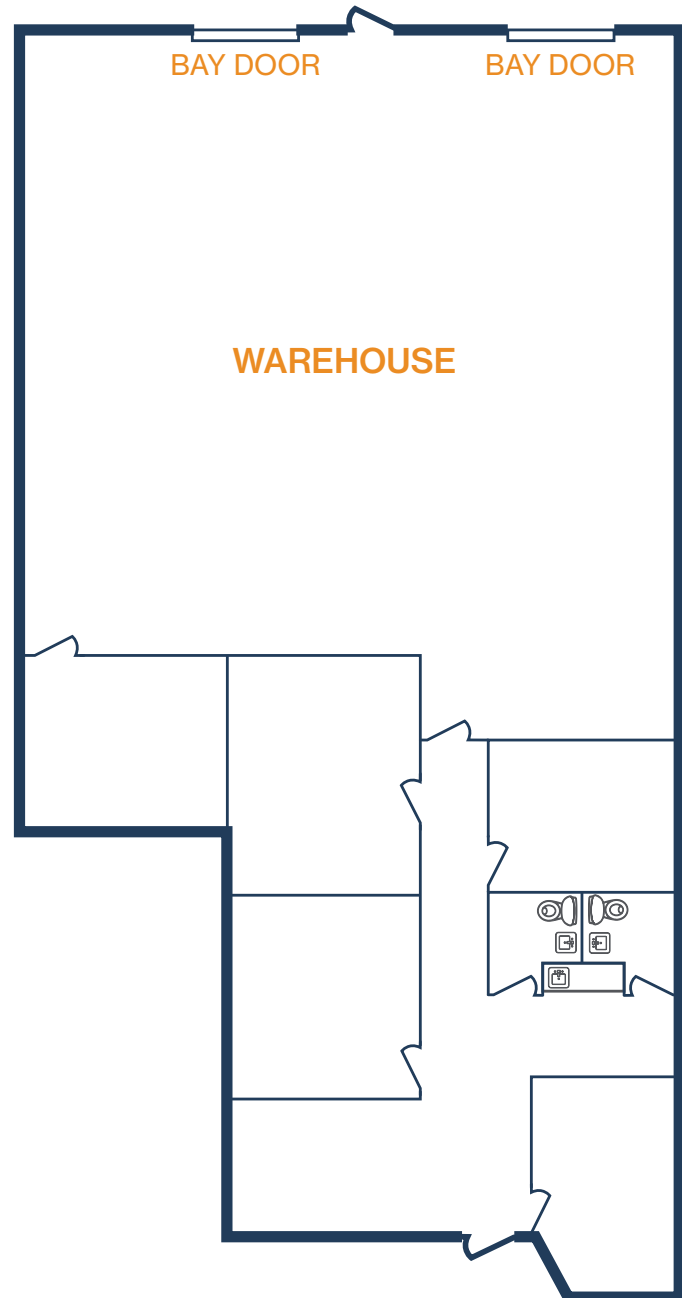
RYAN.YOUNG@FORT-COMPANIES.COM

This information is deemed reliable, however, Fort makes no guarantee, warranties, or representations as to the completeness or accuracy thereof.



## FLOOR PLAN – AVAILABLE IMMEDIATELY

- » 4,600 SF Total Available
- » 2,070 SF Office
- » 2,530 SF Warehouse
- » (2) 10' x 12' Grade Level Doors
- » HVAC Warehouse



**RYAN YOUNG**



281.584.3320

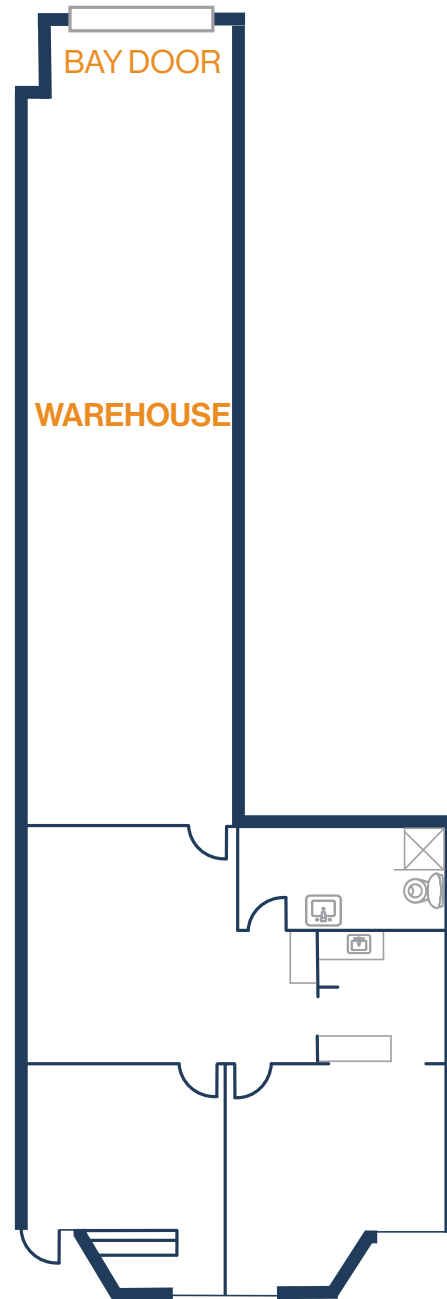


RYAN.YOUNG@FORT-COMPANIES.COM



## FLOOR PLAN – AVAILABLE IMMEDIATELY

- » 2,302 SF Total Available
- » 1,243 SF Office
- » 1,059 SF Warehouse
- » (1) Grade Level Door



**RYAN YOUNG**



281.584.3320

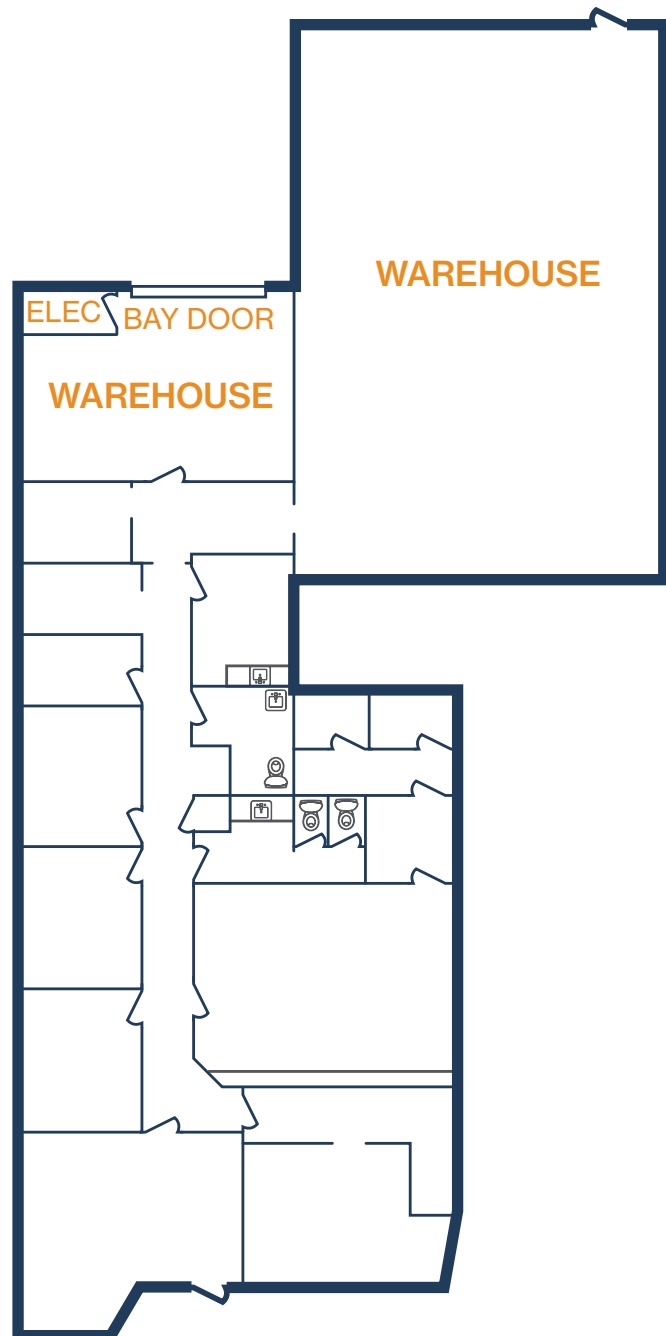


RYAN.YOUNG@FORT-COMPANIES.COM



## FLOOR PLAN – AVAILABLE IMMEDIATELY

- » 5,449 SF Total Available
- » 3,573 SF Office
- » 1,876 SF Warehouse
- » (1) 10' x 12' Grade Level Door



**RYAN YOUNG**



281.584.3320



RYAN.YOUNG@FORT-COMPANIES.COM



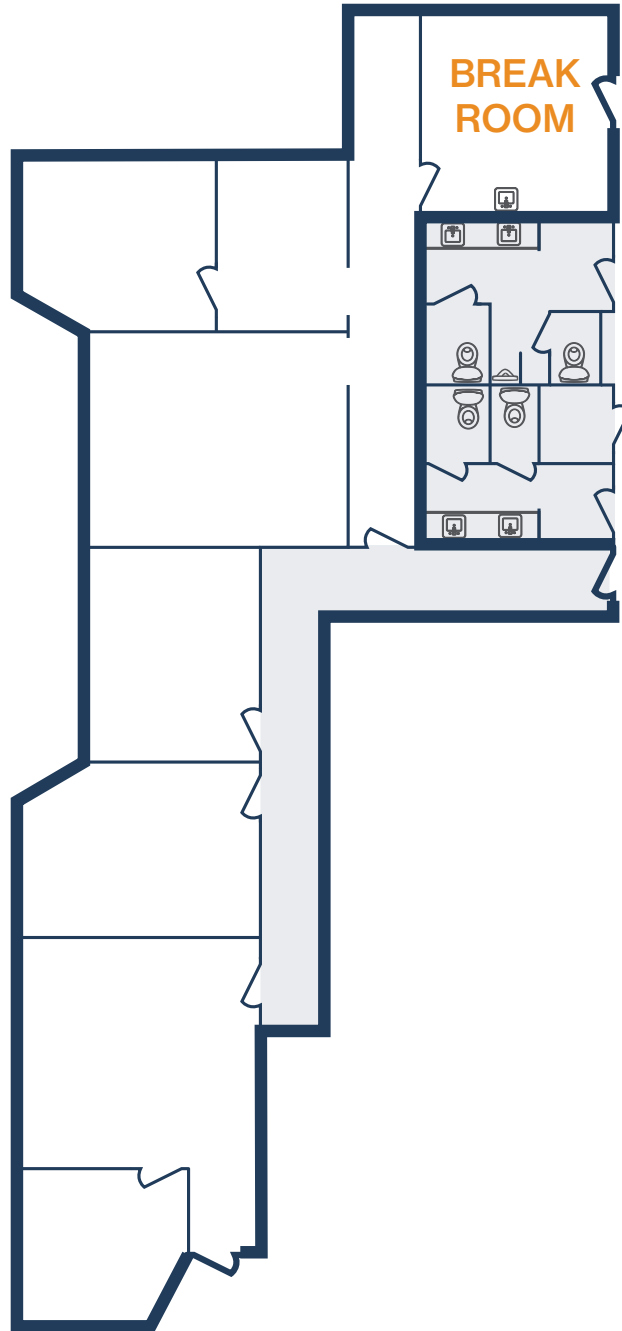
**FORT**  
LEASING

**WESTBELT PLAZA**

10694 Haddington Dr, G  
Houston, TX 77025

## FLOOR PLAN – AVAILABLE IMMEDIATELY

- » 2,002 SF Total Available
- » 100% Office
- » Shared Bathroom
- » Dedicated Break Room



**RYAN YOUNG**



281.584.3320



RYAN.YOUNG@FORT-COMPANIES.COM

This information is deemed reliable, however, Fort makes no guarantee, warranties, or representations as to the completeness or accuracy thereof.