

THEALL BUSINESS PARK

6723 – 6825 THEALL ROAD, HOUSTON, TX 77066



**WILLOWBROOK/CYPRESS
SUBMARKET**



**GREAT ACCESS TO TOM-
BALL PKY AND BELTWAY 8**



18' CLEAR HEIGHT



**CLIMATE-CONTROLLED
WAREHOUSE**



**OVERSIZED 12' X 14' GRADE
LEVEL LOADING**



3 PHASE POWER (240V)

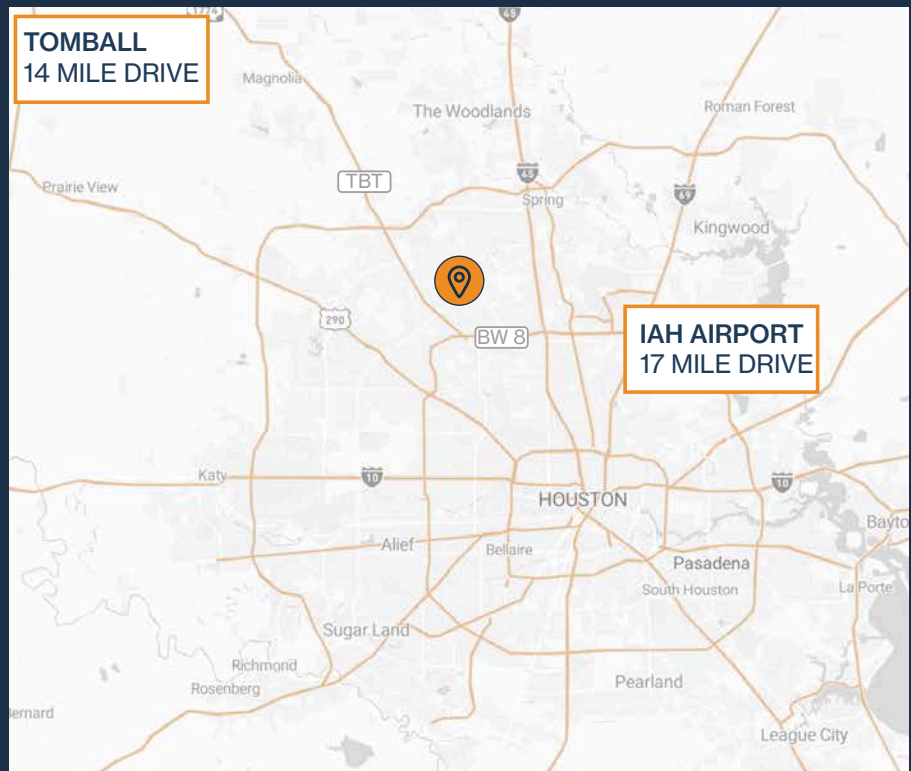


FENCED & GATED



**2,500 SF – 24,600 SF
SUITES AVAILABLE**

**TOMBALL
14 MILE DRIVE**



**IAH AIRPORT
17 MILE DRIVE**

RYAN YOUNG



281.584.3320



RYAN.YOUNG@FORT-COMPANIES.COM

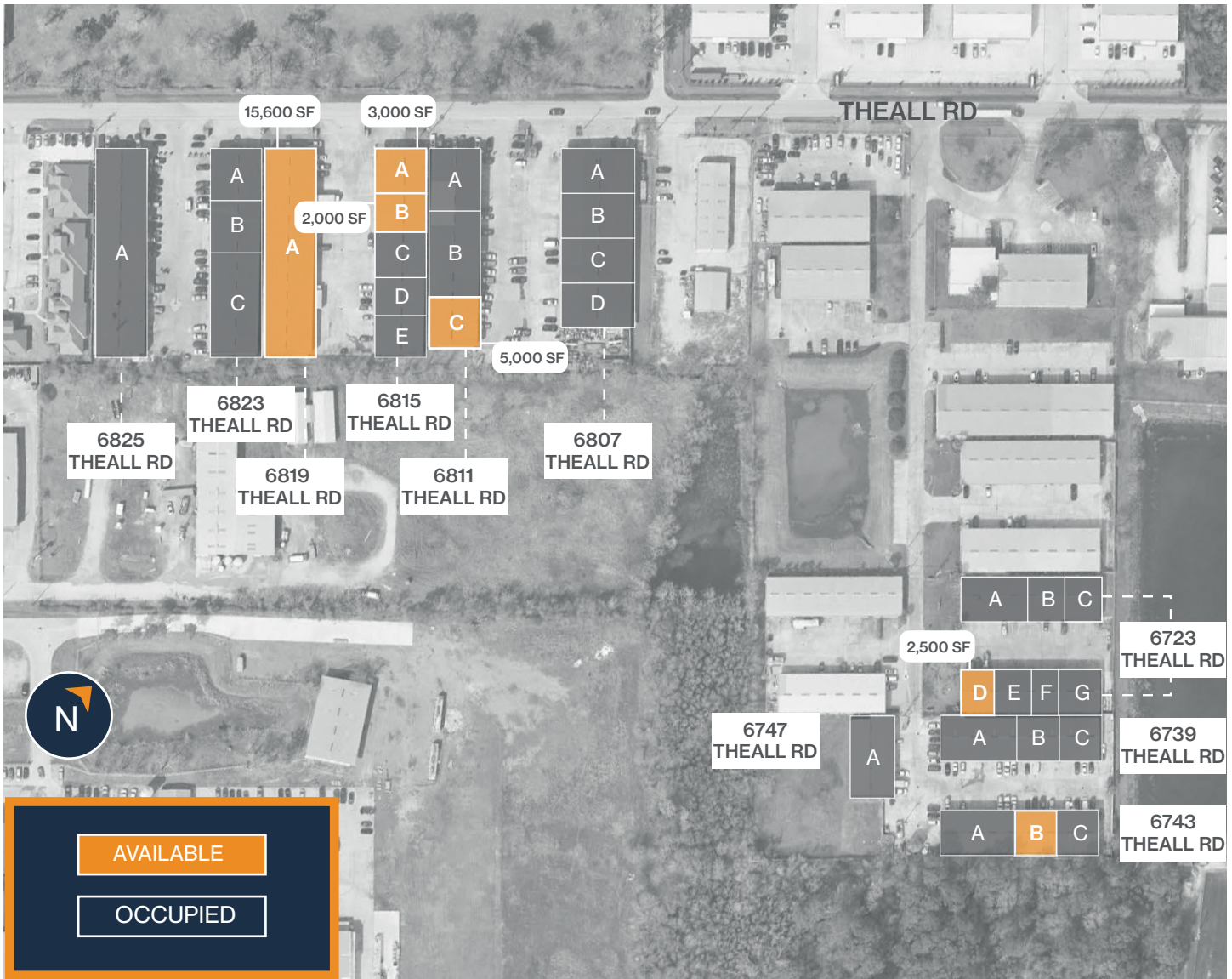


**FORT
LEASING**

This information is deemed reliable, however, Fort makes no guarantee, warranties, or representations as to the completeness or accuracy thereof.



SITE PLAN



RYAN YOUNG



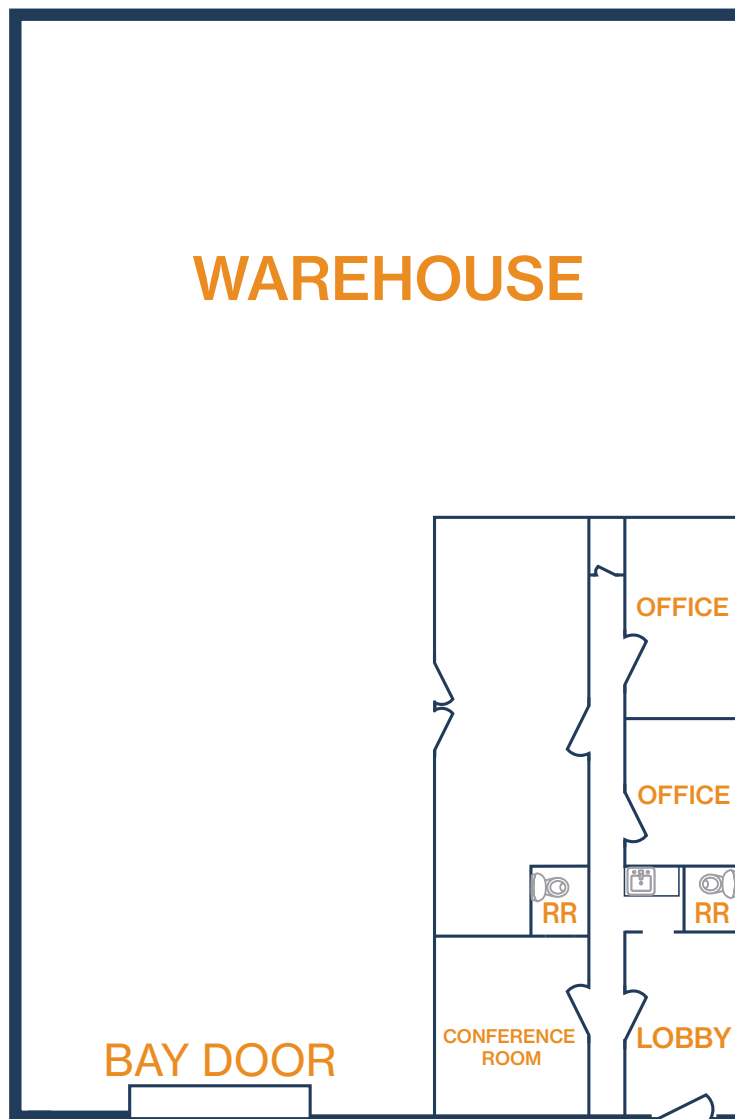
281.584.3320

RYAN.YOUNG@FORT-COMPANIES.COM



FLOOR PLAN – AVAILABLE IMMEDIATELY

- » 2,500 SF Total Available
- » 18' Clear Height
- » Fully Insulated Warehouse
- » Fenced and Gated
- » (1) 12'x14' Grade-Level Door



RYAN YOUNG



281.584.3320

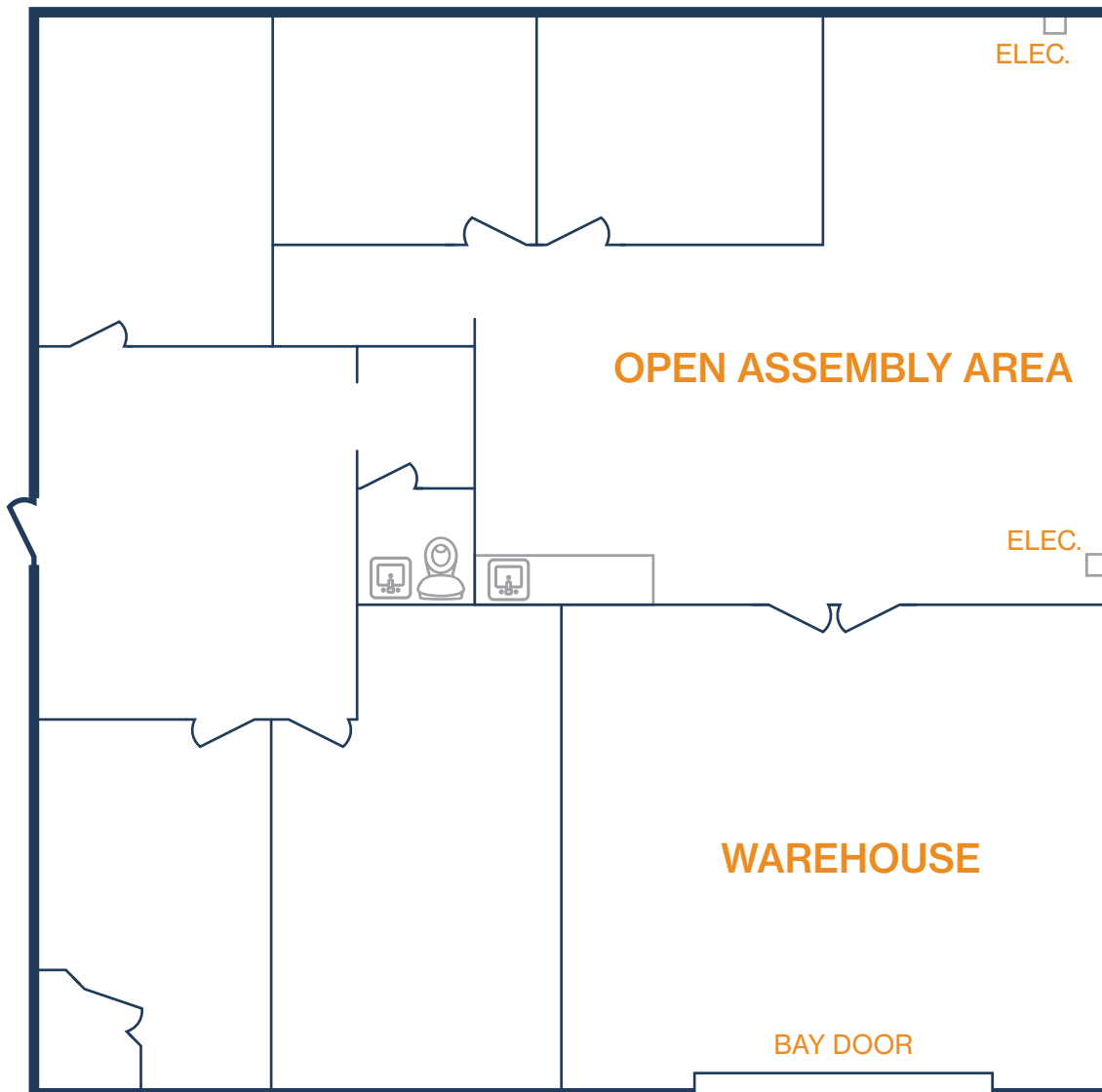


RYAN.YOUNG@FORT-COMPANIES.COM



FLOOR PLAN – AVAILABLE IMMEDIATELY

- » 2,500 SF Total Available
- » 18' Clear Height
- » Fully Insulated Warehouse
- » Fenced and Gated
- » (1) 12'x14' Grade-Level Door



RYAN YOUNG



281.584.3320

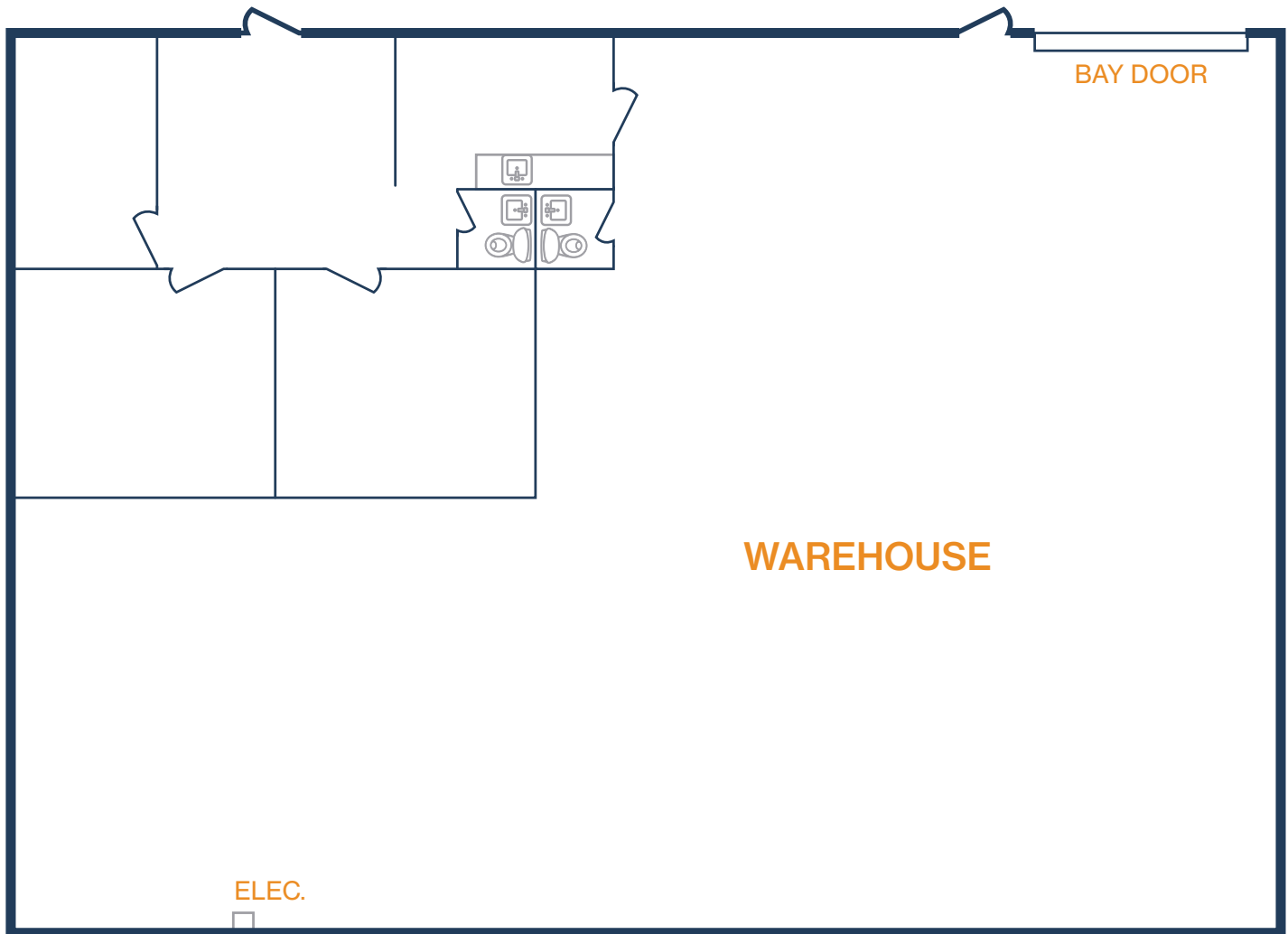


RYAN.YOUNG@FORT-COMPANIES.COM



FLOOR PLAN – AVAILABLE IMMEDIATELY

- » 5,000 SF Total Available
- » 3,150 SF Warehouse
- » 1,850 SF Office
- » 18' Clear Height
- » Fully Insulated Warehouse
- » Fenced and Gated
- » (1) 12'x14' Grade-Level Door



RYAN YOUNG



281.584.3320

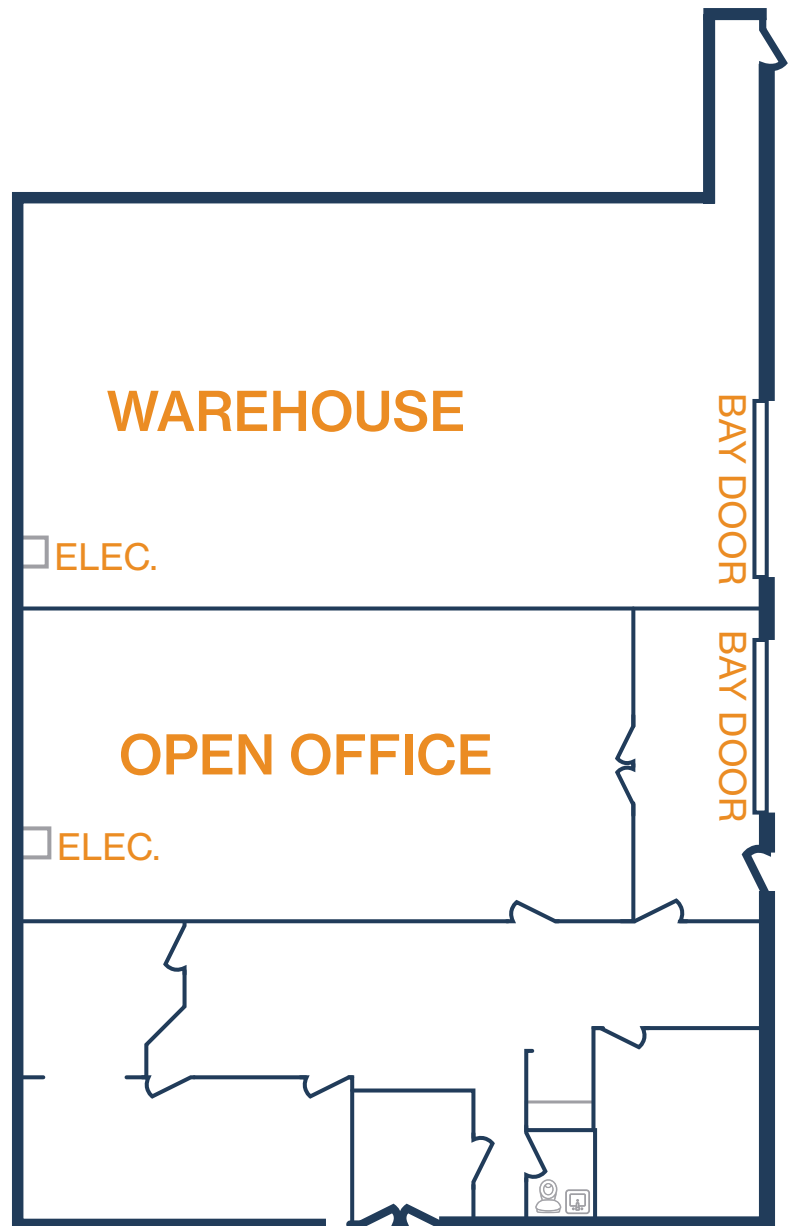


RYAN.YOUNG@FORT-COMPANIES.COM



FLOOR PLAN – AVAILABLE IMMEDIATELY

- » 5,000 SF Total Available
- » 18' Clear Height
- » Fully Insulated Warehouse
- » Fenced and Gated
- » (2) 12'x14' Grade-Level Doors



RYAN YOUNG



281.584.3320

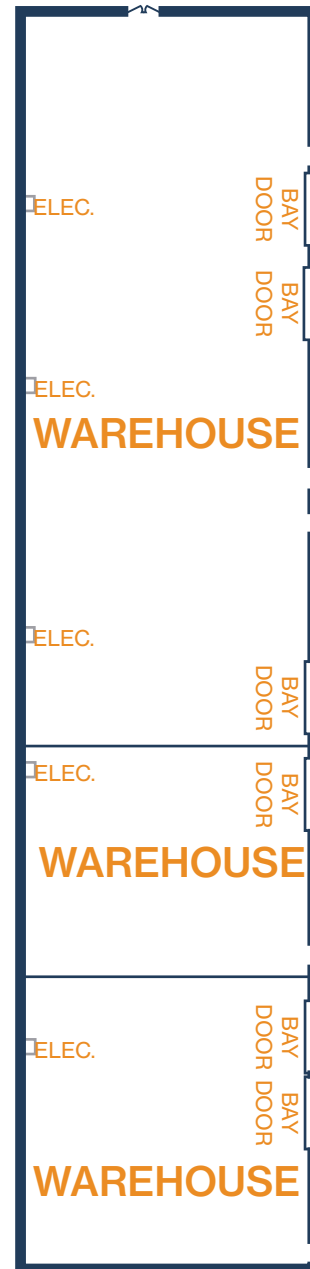


RYAN.YOUNG@FORT-COMPANIES.COM



FLOOR PLAN – AVAILABLE IMMEDIATELY

- » 15,600 SF Warehouse Available
- » 18' Clear Height
- » Fully Insulated Warehouse
- » Fenced and Gated
- » (6) 12'x14' Grade-Level Doors



RYAN YOUNG



281.584.3320



RYAN.YOUNG@FORT-COMPANIES.COM