

STONECREST BUSINESS CENTER

11000 WILCREST DR. & 10804-10816 FALLSTONE RD., HOUSTON, TX 77099



**SOUTHWEST HOUSTON &
SUGARLAND SUBMARKET**



**GREAT ACCESS TO I-69
AND BELTWAY 8**



**100% CLIMATE-CONTROLLED
SUITES AVAILABLE**



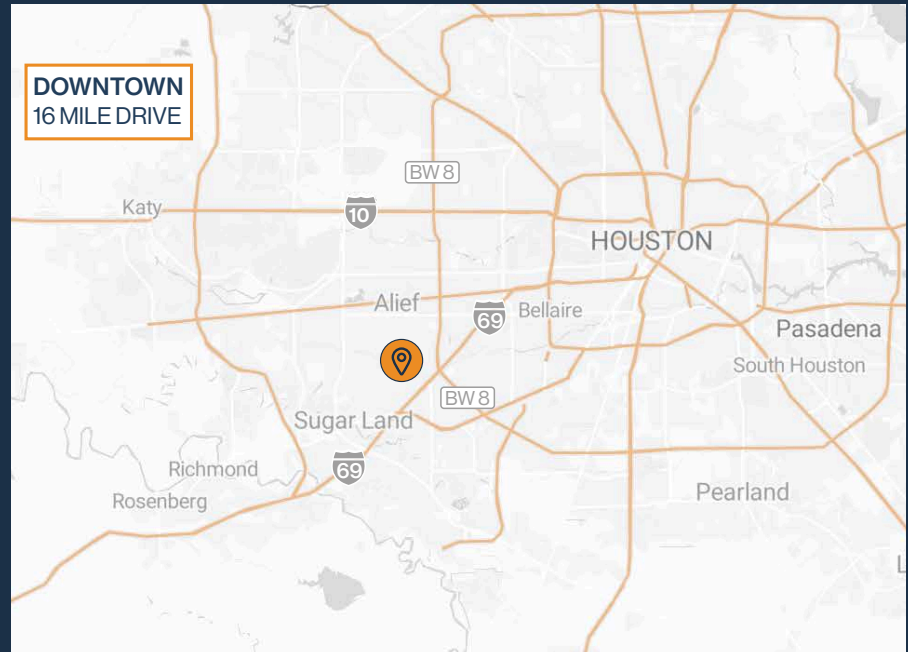
**GRADE-LEVEL, SEMI-DOCK,
AND DOCK-HIGH LOADING**



DRIVE-UP SURFACE PARKING



**1,570 SF – 12,230 SF
SUITES AVAILABLE**



THOMAS PFEIFER



281.504.7460



THOMAS.PFEIFER@FORT-COMPANIES.COM



FORT
LEASING

This information is deemed reliable, however, Fort makes no guarantee, warranties, or representations as to the completeness or accuracy thereof.



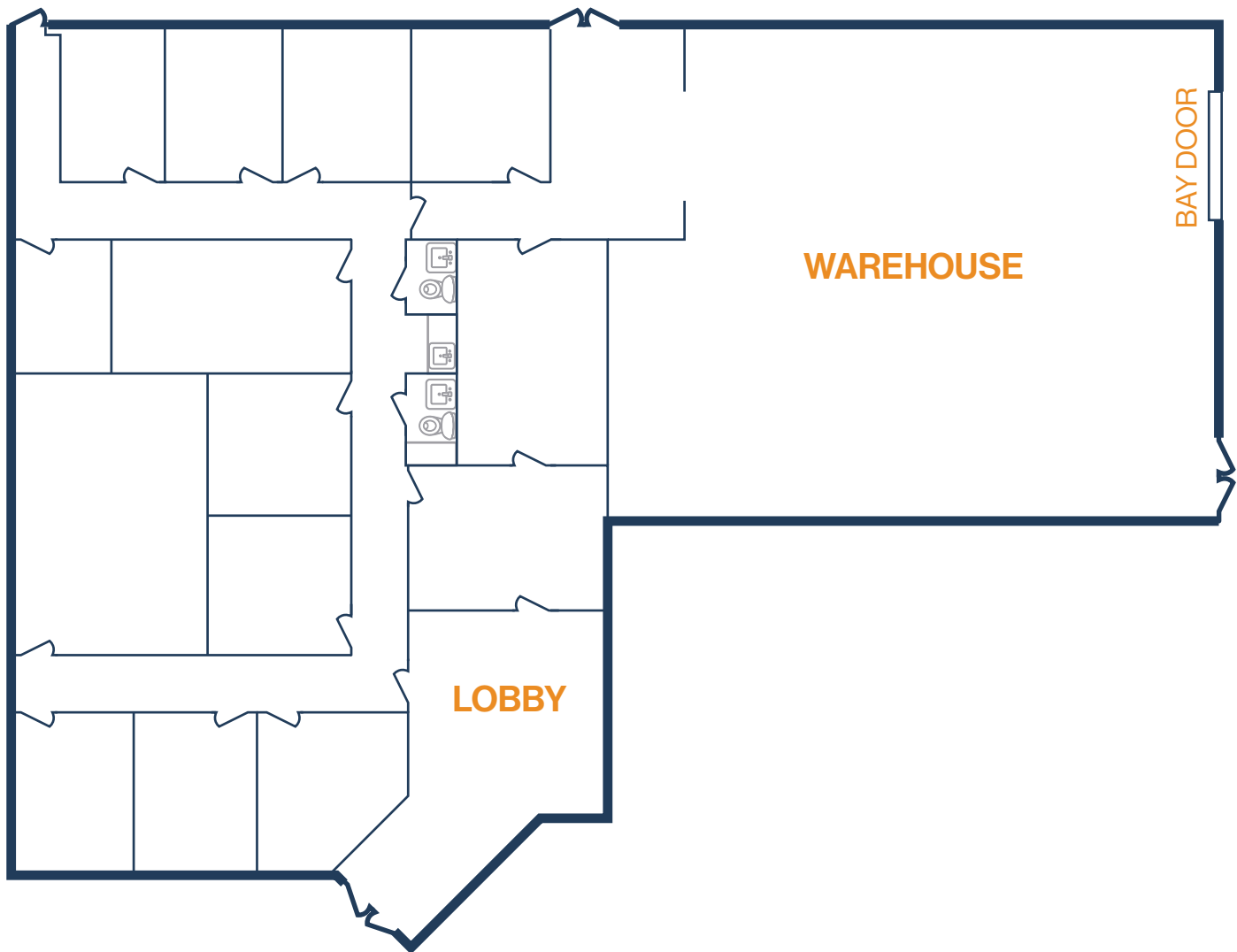
SITE PLAN





FLOOR PLAN — AVAILABLE IMMEDIATELY

- » 7,136 SF Total Available
- » 4,607 SF Office
- » 2,529 SF Warehouse
- » Insulated Warehouse
- » (1) 12'x14' Grade-Level Door



THOMAS PFEIFER

 281.504.7460

 THOMAS.PFEIFER@FORT-COMPANIES.COM



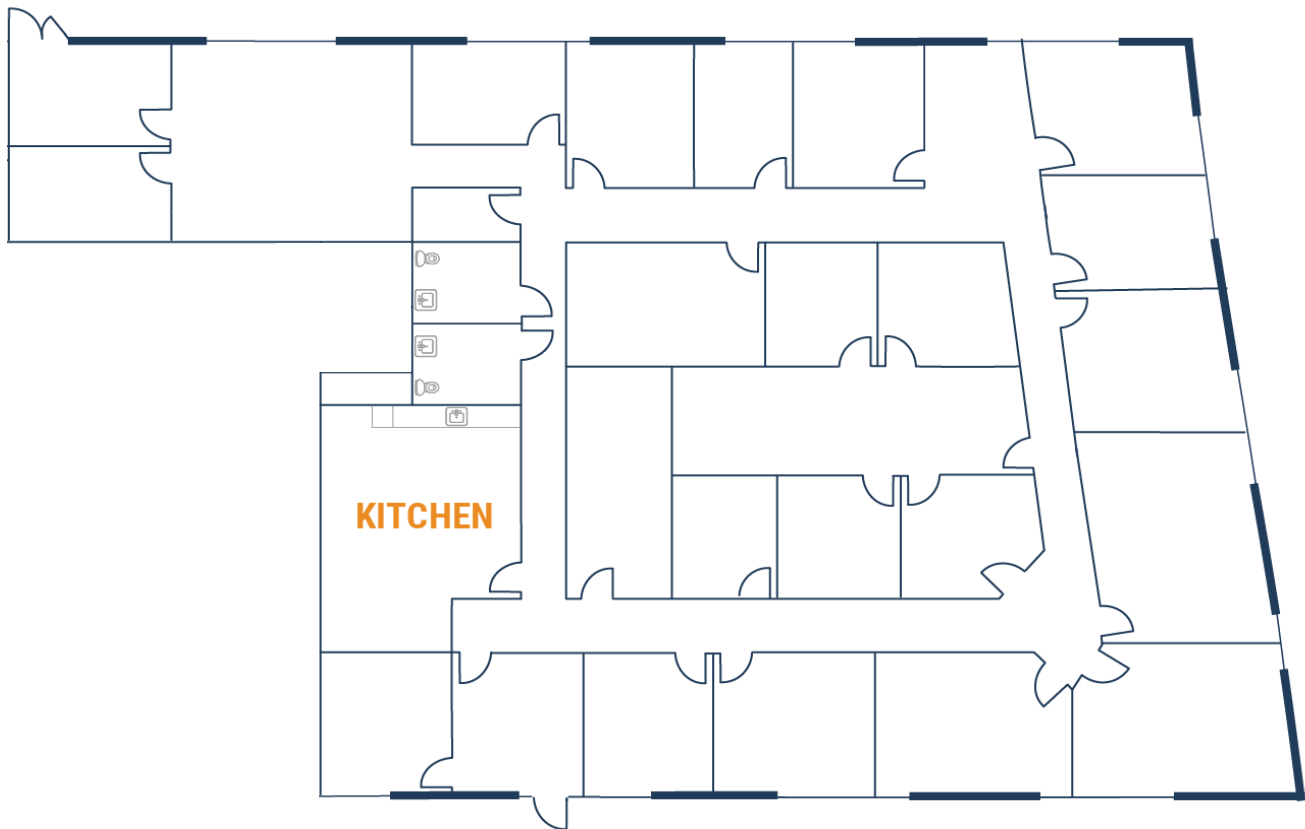
FORT
LEASING

STONECREST BUSINESS CENTER

11000 Wilcrest, Suites 125
Houston, TX 77099

FLOOR PLAN — AVAILABLE IMMEDIATELY

- » 7,191 SF Total Available
- » Glass Storefront
- » 100% Office



THOMAS PFEIFER



281.504.7460

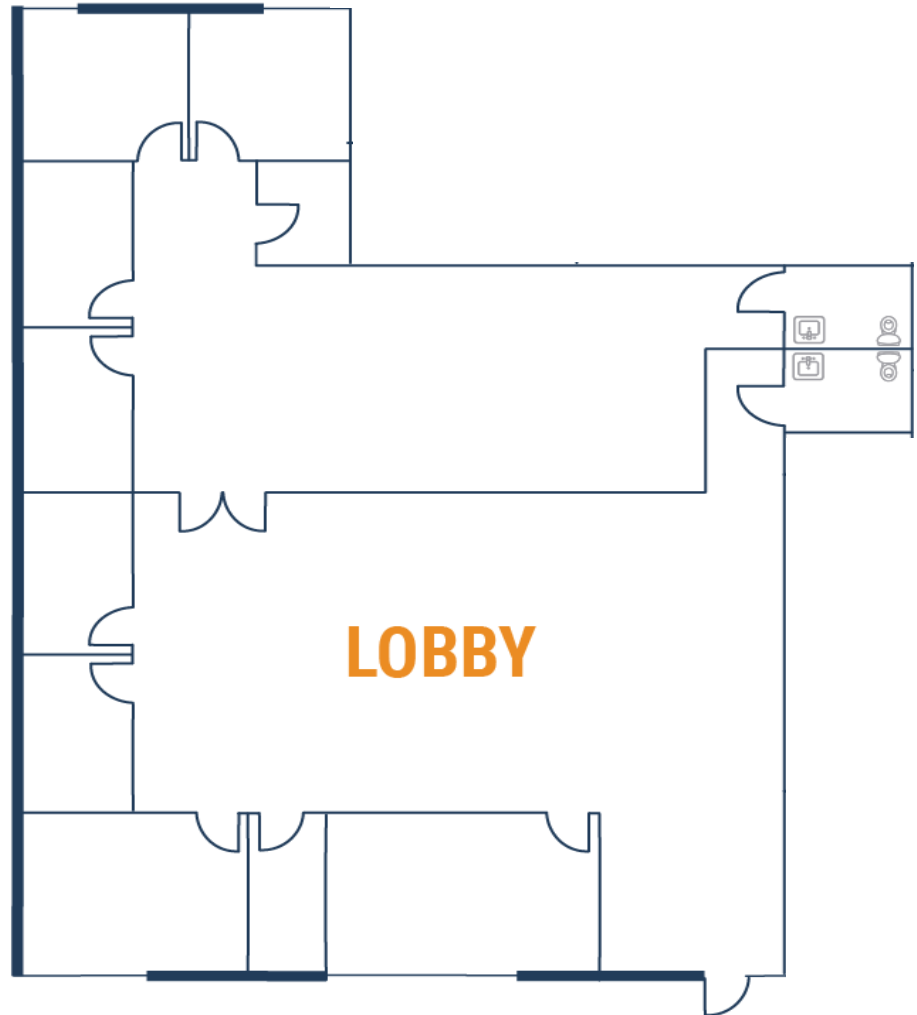
THOMAS.PFEIFER@FORT-COMPANIES.COM

This information is deemed reliable, however, Fort makes no guarantee, warranties, or representations as to the completeness or accuracy thereof.



FLOOR PLAN — AVAILABLE IMMEDIATELY

- » 3,605 SF Total Available
- » 100% Office
- » Glass Storefront
- » 3-Phase Power



THOMAS PFEIFER



281.504.7460



THOMAS.PFEIFER@FORT-COMPANIES.COM



FLOOR PLAN — AVAILABLE IMMEDIATELY

- » 12,229 SF Total Available
- » 2,849 SF Office
- » 9,380 SF Warehouse
- » Climate-Controlled Warehouse
- » (3) Ramps



THOMAS PFEIFER



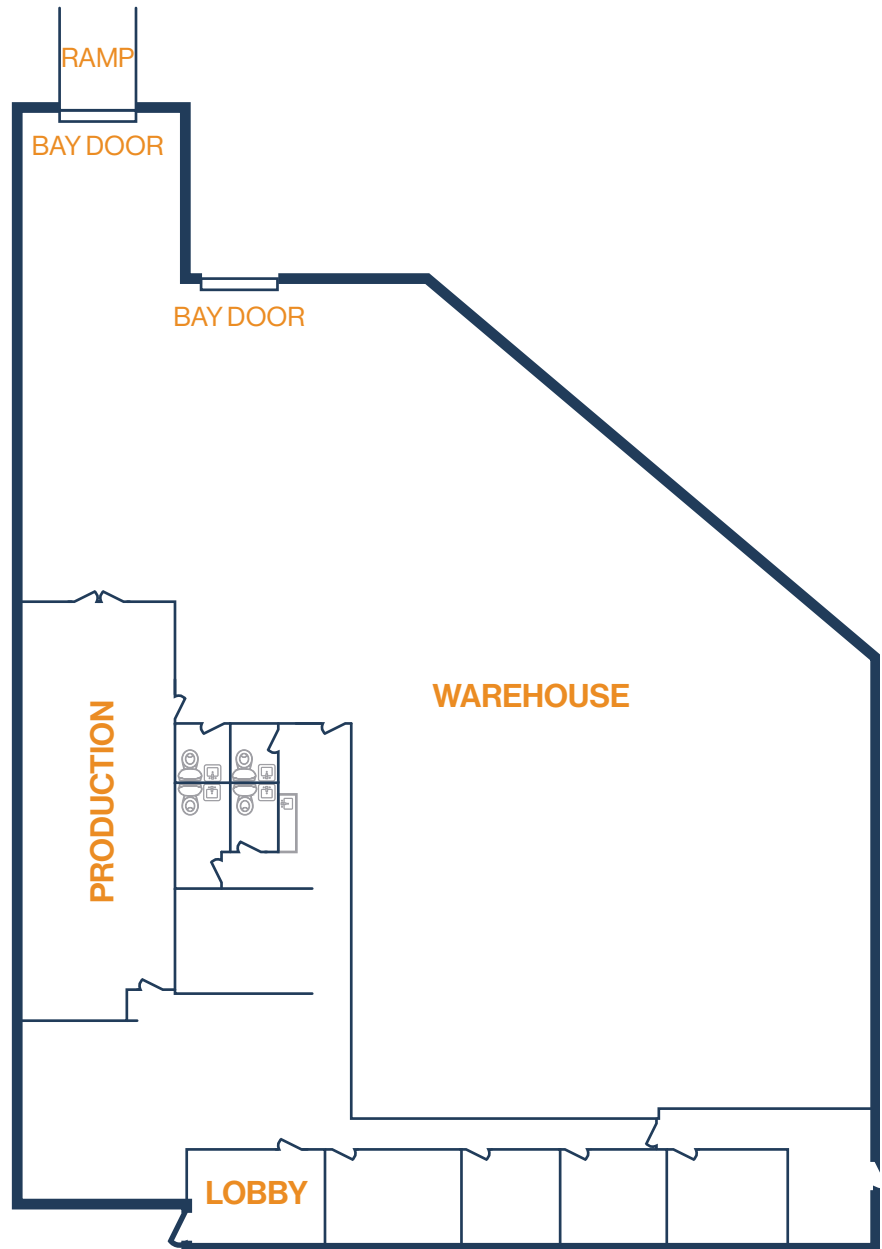
281.504.7460

THOMAS.PFEIFER@FORT-COMPANIES.COM



FLOOR PLAN — AVAILABLE IMMEDIATELY

- » 10,561 SF Total Available
 - » 3,168 SF Office
 - » 7,393 SF Warehouse
- » (1) 12'x10' Door with Ramp
- » (1) 12'x10' Dock-High Door (well)
- » 3 Phase Power



THOMAS PFEIFER



281.504.7460



THOMAS.PFEIFER@FORT-COMPANIES.COM