

TOMBALL PKY BUSINESS CENTER

22955 TOMBALL PARKWAY, TOMBALL, TX 77377



**NORTHWEST HOUSTON
SUBMARKET**



**GREAT ACCESS TO TOMBALL
PARKWAY/TX-249**



18' - 23' CLEAR HEIGHT



TENANT-CONTROLLED HVAC



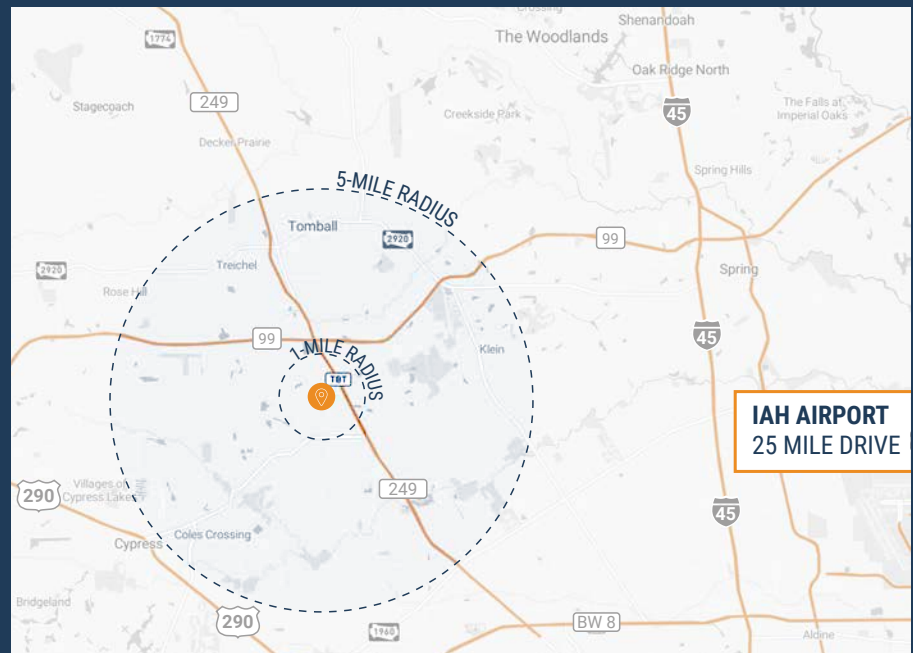
**12' X 14' GRADE-LEVEL
LOADING**



18-WHEELER ACCESSIBLE



**2,181 SF - 5,276 SF
SUITES AVAILABLE**



RYAN YOUNG

281.584.3320
RYAN.YOUNG@FORT-COMPANIES.COM

THOMAS PFEIFER

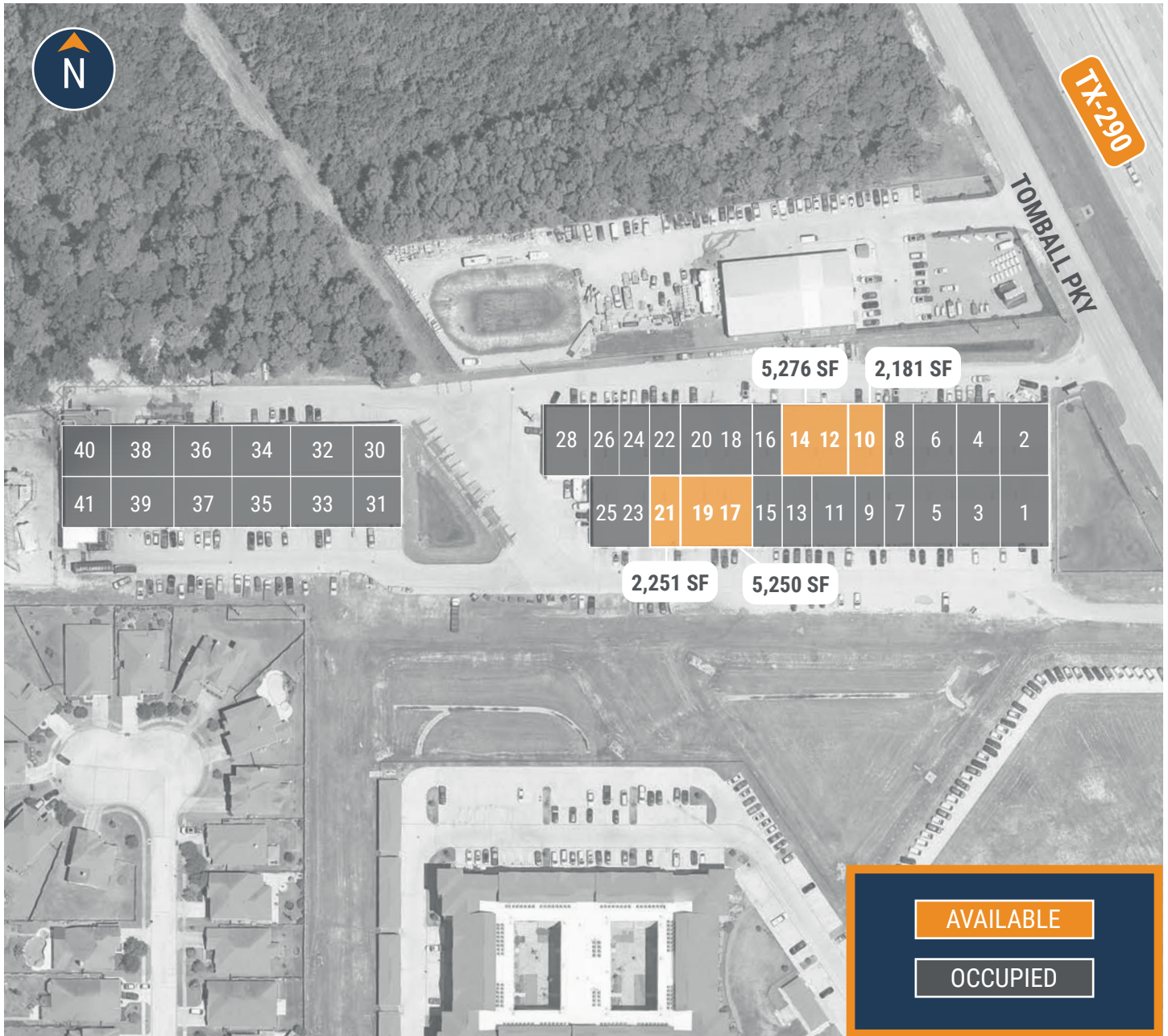
281.504.7460
THOMAS.PFEIFER@FORT-COMPANIES.COM



FORT CAPITAL

This information is deemed reliable, however, Fort Capital makes no guarantee, warranties, or representations as to the completeness or accuracy thereof.

SITE PLAN



RYAN YOUNG

281.584.3320
RYAN.YOUNG@FORT-COMPANIES.COM

THOMAS PFEIFER

281.504.7460
THOMAS.PFEIFER@FORT-COMPANIES.COM

This information is deemed reliable, however, Fort Capital makes no guarantee, warranties, or representations as to the completeness or accuracy thereof.



FLOOR PLAN – AVAILABLE IMMEDIATELY

- » 2,181 SF Total Available
- » 396 SF Office
- » 1,785 SF Warehouse
- » (1) 12' x 14' Grade Level Door



***All SF labels are approximations*

RYAN YOUNG

281.584.3320
RYAN.YOUNG@FORT-COMPANIES.COM

THOMAS PFEIFER

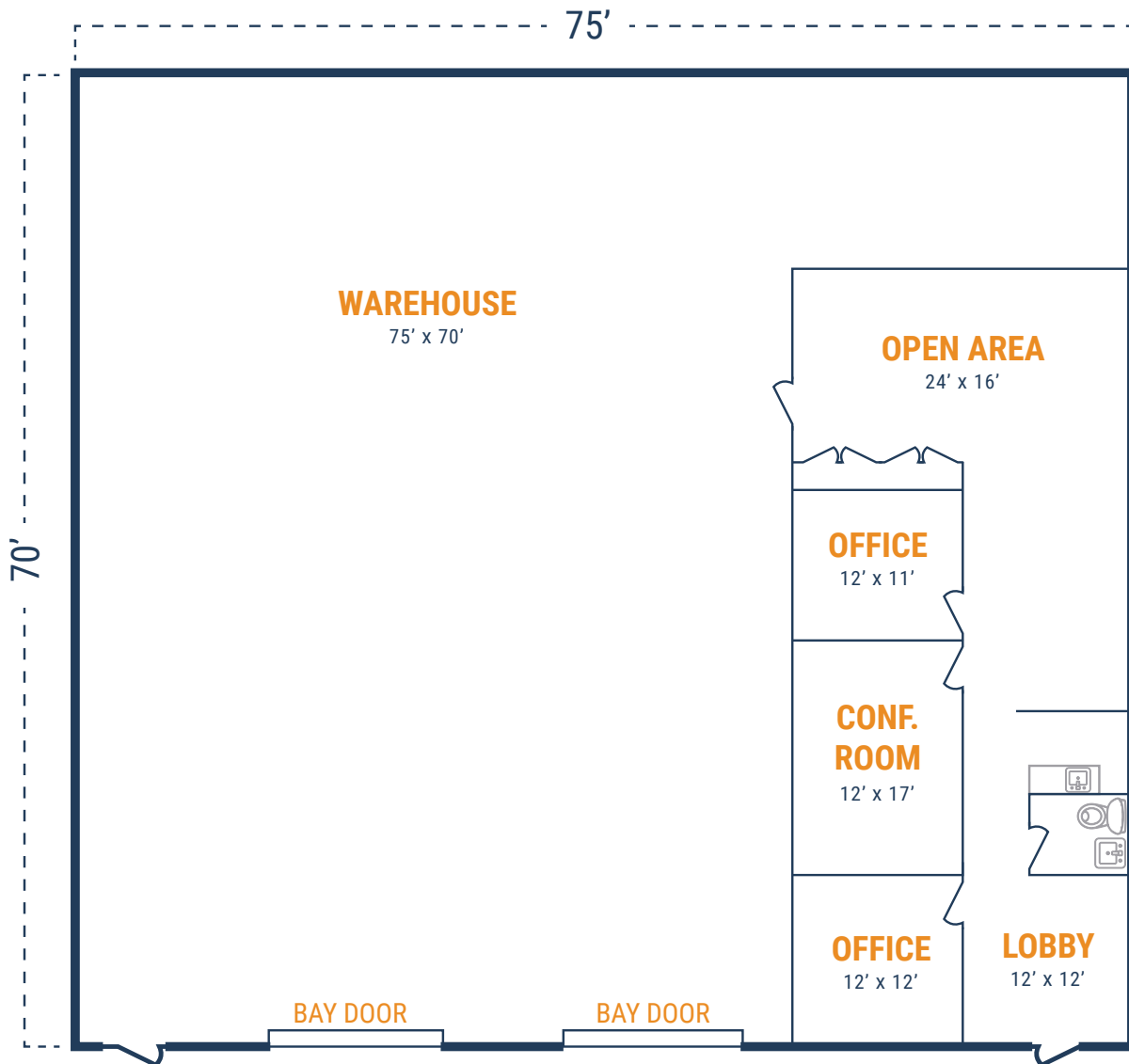
281.504.7460
THOMAS.PFEIFER@FORT-COMPANIES.COM

This information is deemed reliable, however, Fort Capital makes no guarantee, warranties, or representations as to the completeness or accuracy thereof.



FLOOR PLAN – AVAILABLE IMMEDIATELY

- » 5,250 SF Total Available
- » 1,350 SF Office
- » 3,900 SF Warehouse
- » (2) 12' x 14' Grade Level Doors



***All SF labels are approximations*

RYAN YOUNG

281.584.3320
RYAN.YOUNG@FORT-COMPANIES.COM

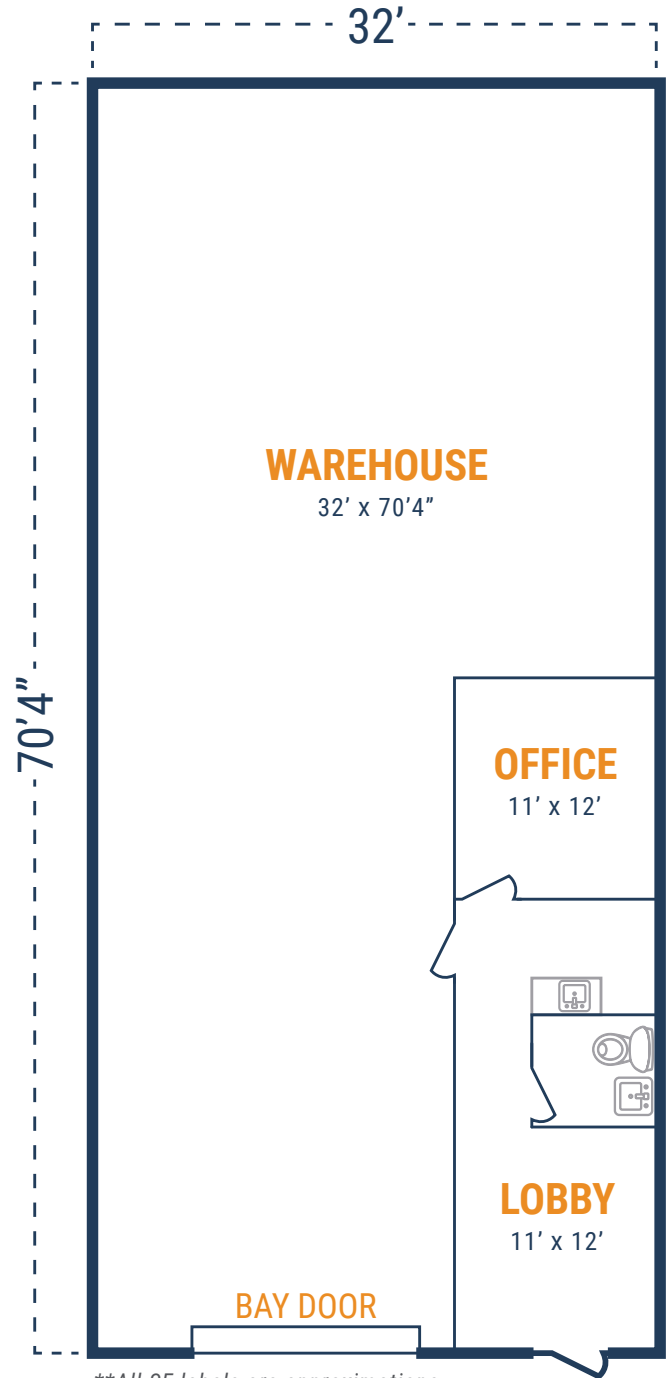
THOMAS PFEIFER

281.504.7460
THOMAS.PFEIFER@FORT-COMPANIES.COM

This information is deemed reliable, however, Fort Capital makes no guarantee, warranties, or representations as to the completeness or accuracy thereof.

FLOOR PLAN – AVAILABLE IMMEDIATELY

- » 2,251 SF Total Available
- » 443 SF Office
- » 1,808 SF Warehouse
- » (1) 12' x 14' Grade Level Door



***All SF labels are approximations*

RYAN YOUNG

281.584.3320
RYAN.YOUNG@FORT-COMPANIES.COM

THOMAS PFEIFER

281.504.7460
THOMAS.PFEIFER@FORT-COMPANIES.COM

This information is deemed reliable, however, Fort Capital makes no guarantee, warranties, or representations as to the completeness or accuracy thereof.