

PLAZA PARK

7505 – 7563 SOUTH FWY HOUSTON, TX 77021



**SOUTH INNER LOOP
SUBMARKET**



**GREAT ACCESS TO I-610,
HWY-90, AND HWY-288**



14' CLEAR HEIGHT



TENANT-CONTROLLED HVAC



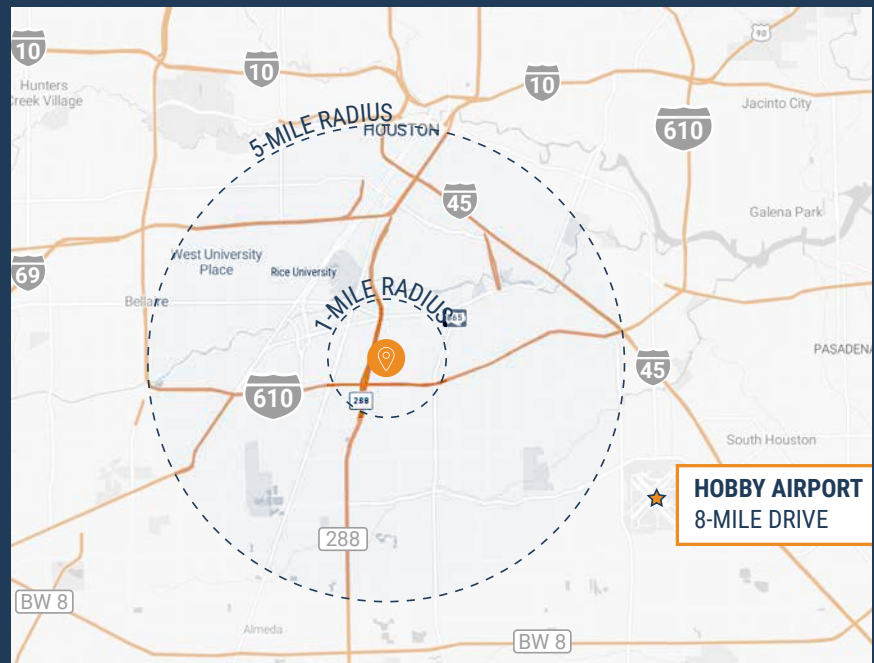
**GRADE-LEVEL AND
DOCK LOADING**



GLASS STOREFRONT



**2,017 SF – 13,335 SF
SUITES AVAILABLE**



THOMAS PFEIFER



281.504.7460



THOMAS.PFEIFER@FORT-COMPANIES.COM



FORT CAPITAL

This information is deemed reliable, however, Fort Capital makes no guarantee, warranties, or representations as to the completeness or accuracy thereof.



FORT CAPITAL

PLAZA PARK

7505 – 7563 South Fwy
Houston, TX 77021

SITE PLAN



THOMAS PFEIFER



281.504.7460



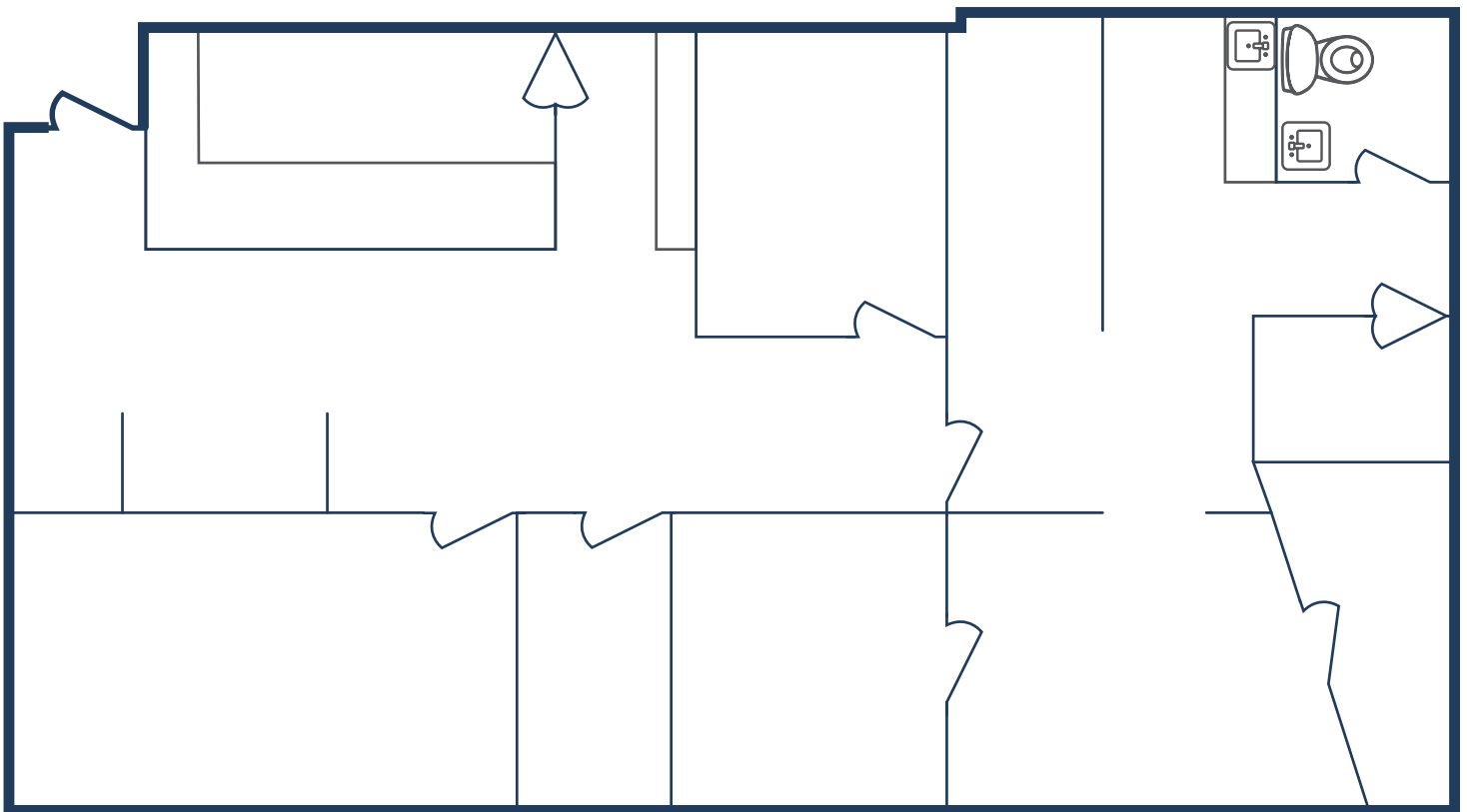
THOMAS.PFEIFER@FORT-COMPANIES.COM

This information is deemed reliable, however, Fort Capital makes no guarantee, warranties, or representations as to the completeness or accuracy thereof.



FLOOR PLAN – AVAILABLE IMMEDIATELY

- » 2,017 SF Total Available
 - » 100% Office
- » Glass Storefront
- » (4) Offices



THOMAS PFEIFER



281.504.7460



THOMAS.PFEIFER@FORT-COMPANIES.COM



FLOOR PLAN – AVAILABLE IMMEDIATELY

- » 13,335 SF Total Available
 - » 8,035 SF Office
 - » 5,300 SF Warehouse
- » Backup Generator
- » (1) Ramp



THOMAS PFEIFER



281.504.7460

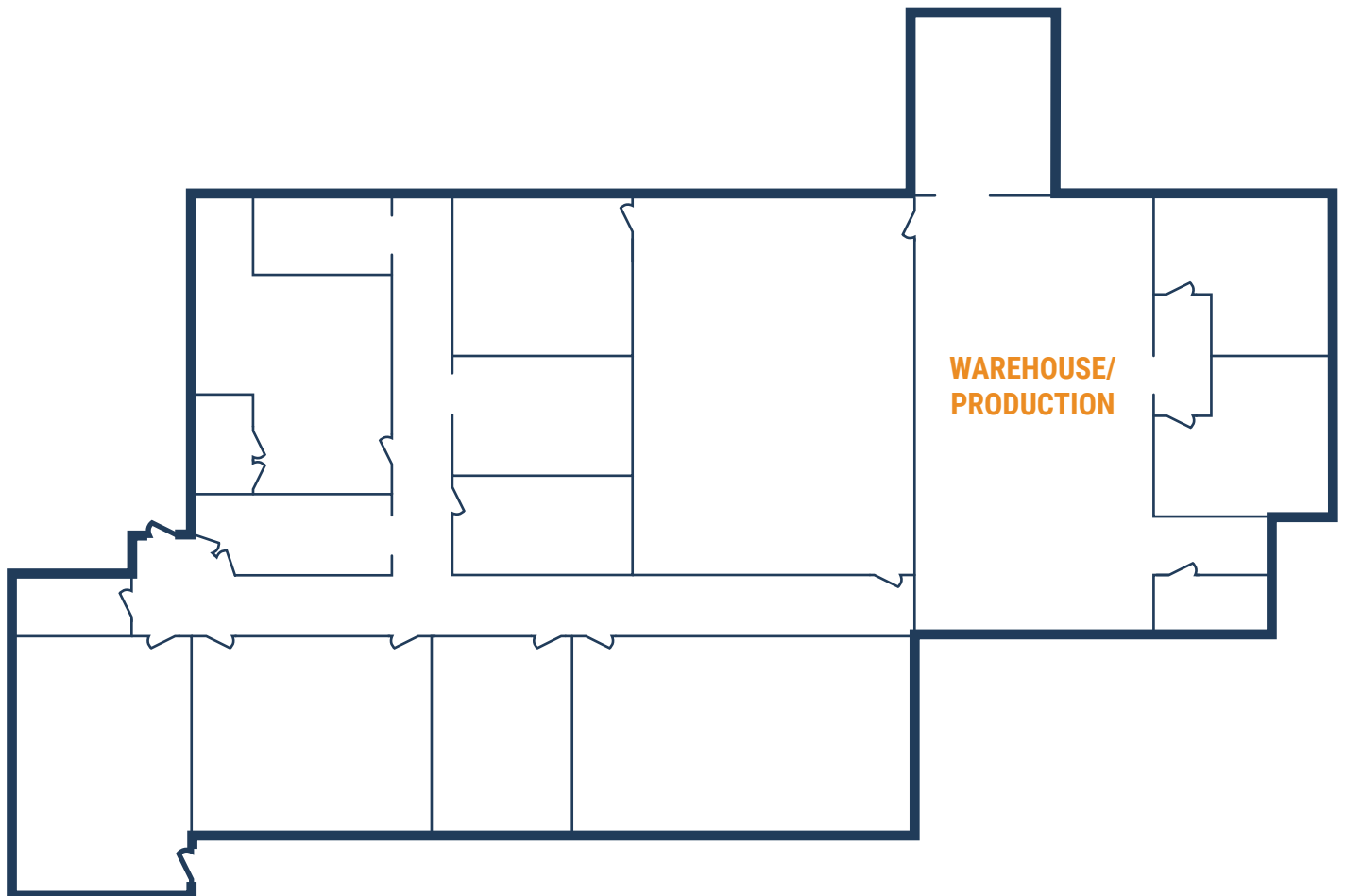


THOMAS.PFEIFER@FORT-COMPANIES.COM



FLOOR PLAN – AVAILABLE IMMEDIATELY

- » 4,452 SF Total Available
- » 3,784 SF Office
- » 668 SF Warehouse/Production
- » (7) Offices



THOMAS PFEIFER



281.504.7460



THOMAS.PFEIFER@FORT-COMPANIES.COM



FLOOR PLAN – AVAILABLE IMMEDIATELY

- » 5,430 SF Total Available
 - » 1,086 SF Office
 - » 4,344 SF Warehouse
- » 3 Phase Power (250 Amps)
- » (1) Semi-Dock Door



THOMAS PFEIFER



281.504.7460

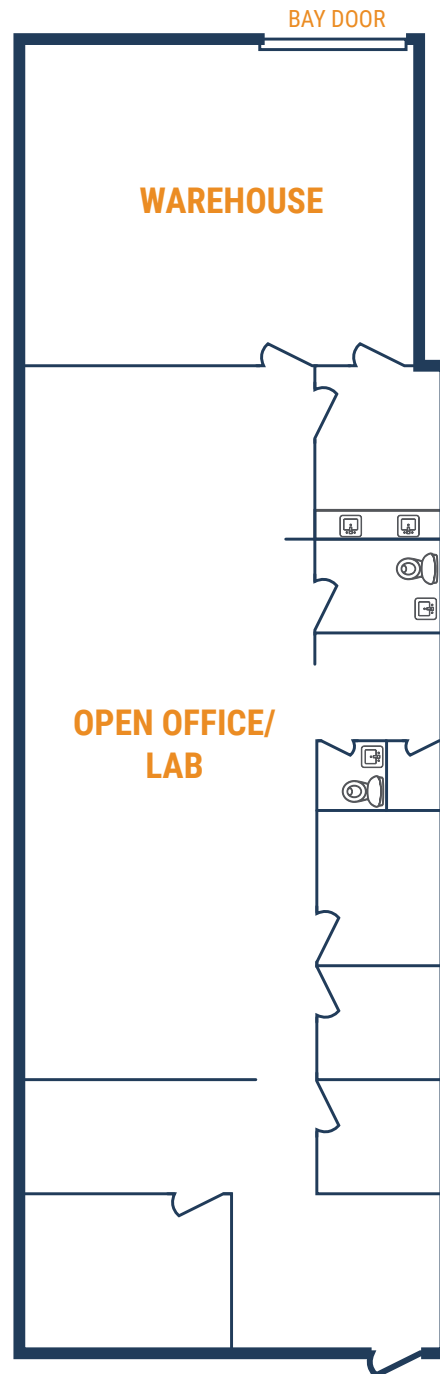


THOMAS.PFEIFER@FORT-COMPANIES.COM



FLOOR PLAN – AVAILABLE IMMEDIATELY

- » 2,800 SF Total Available
- » 2,150 SF Lab/Office
- » 650 SF Warehouse
- » (1) Semi-Dock Door



THOMAS PFEIFER



281.504.7460

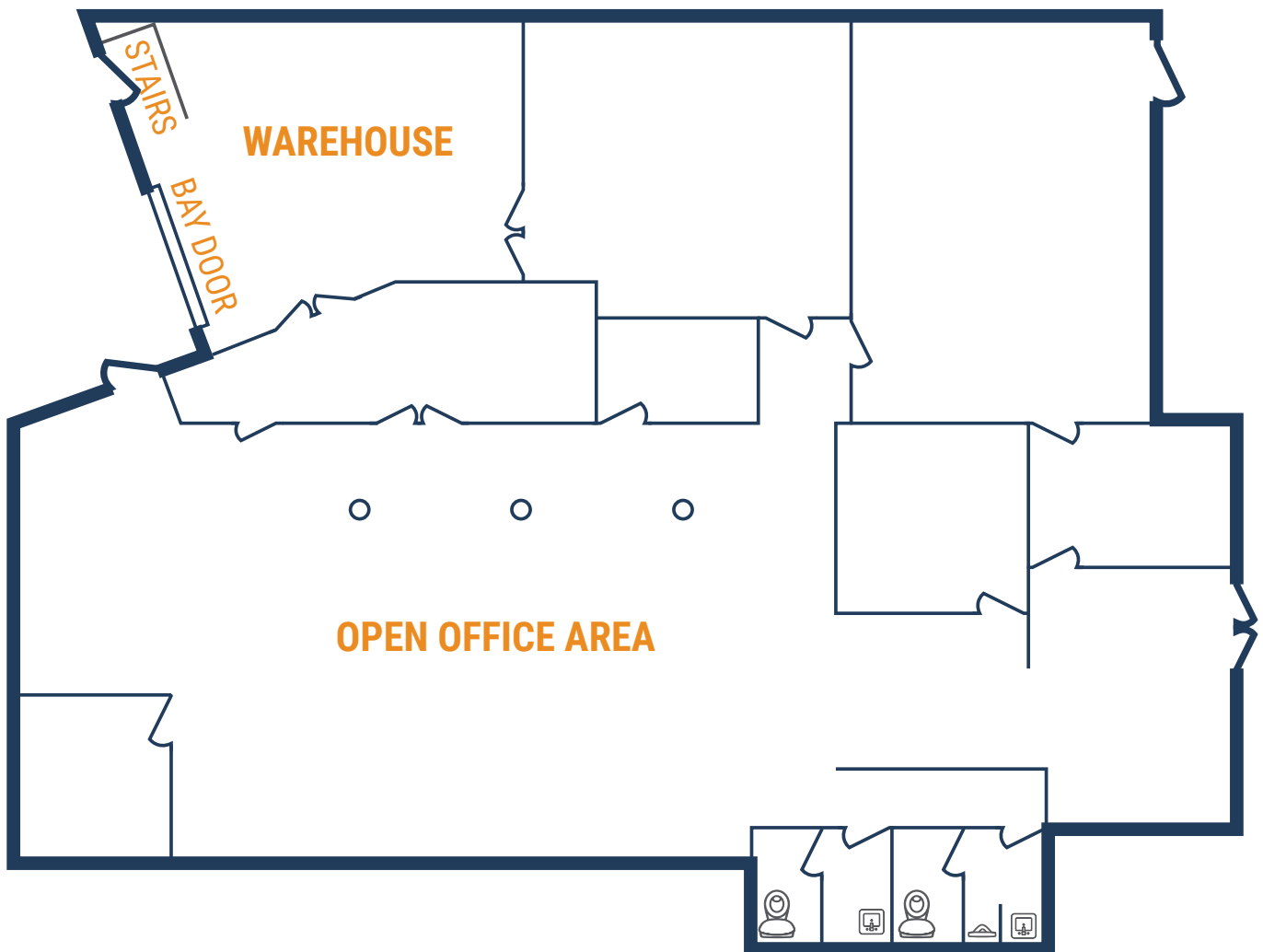


THOMAS.PFEIFER@FORT-COMPANIES.COM



FLOOR PLAN – AVAILABLE IMMEDIATELY

- » 5,269 SF Total Available
- » (1) Ramp
- » 4,742 SF Office
- » 527 SF Warehouse



THOMAS PFEIFER



281.504.7460



THOMAS.PFEIFER@FORT-COMPANIES.COM