

ELDRIDGE BUSINESS CENTER

6830 N ELDRIDGE PKWY, HOUSTON, TX 77041



NORTHWEST SUBMARKET



**GREAT ACCESS TO BELTWAY 8,
US-290, AND ELDRIDGE**



24' CLEAR HEIGHT



**CLIMATE-CONTROLLED
WAREHOUSE**



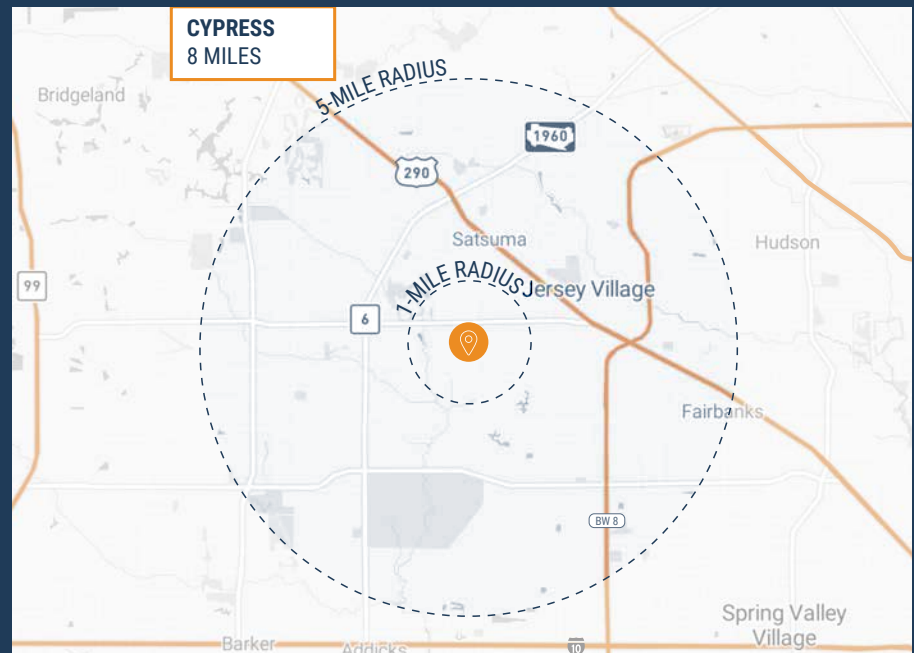
3-PHASE POWER



COMPETITIVE RATES



**2,655 SF - 5,500 SF
SUITES AVAILABLE**



RYAN YOUNG



281.584.3320



RYAN.YOUNG@FORT-COMPANIES.COM



FORT CAPITAL

This information is deemed reliable, however, Fort Capital makes no guarantee, warranties, or representations as to the completeness or accuracy thereof.

SITE PLAN



RYAN YOUNG



281.584.3320

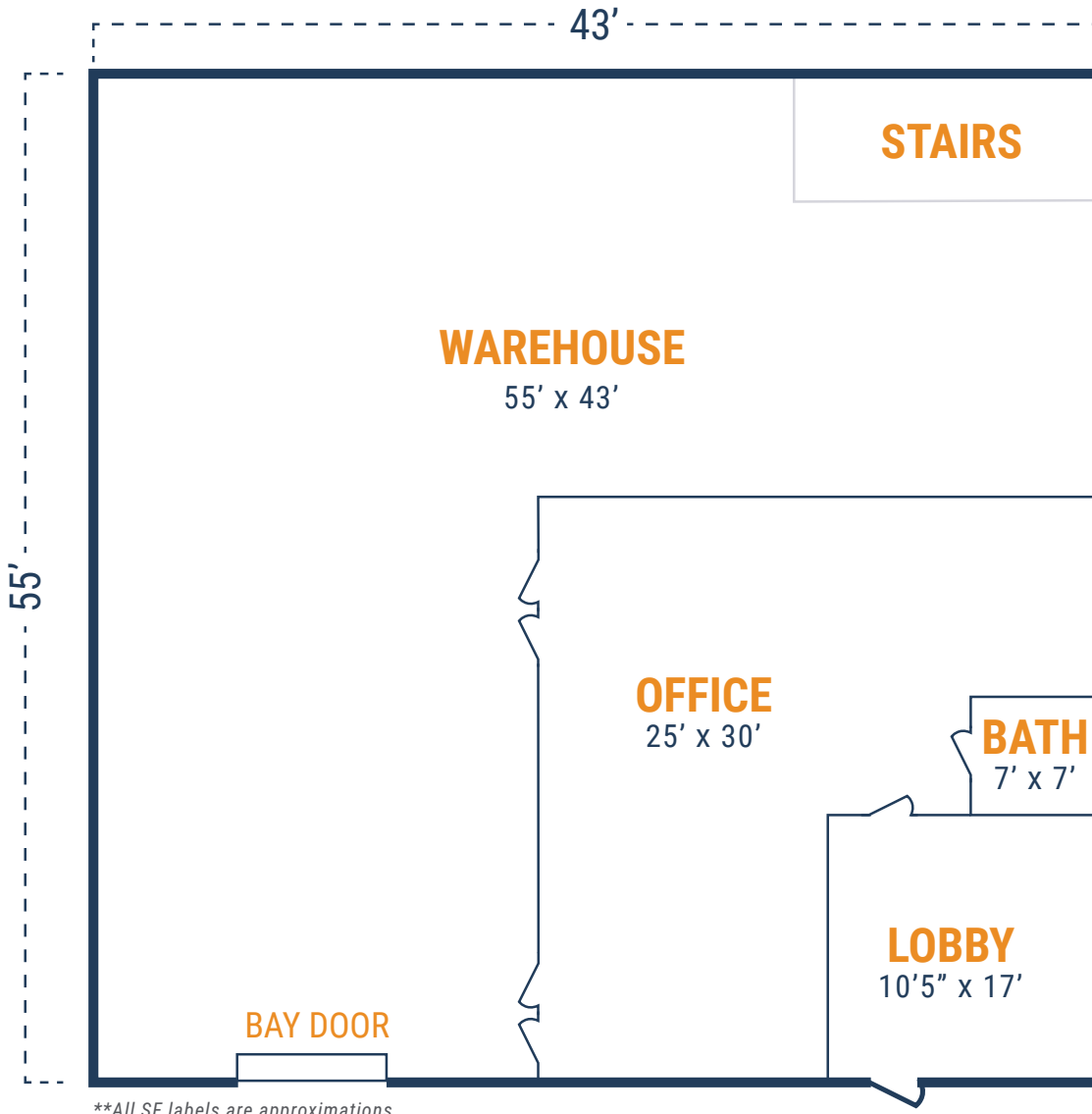


RYAN.YOUNG@FORT-COMPANIES.COM



FLOOR PLAN – AVAILABLE IMMEDIATELY

- » 2,655 SF Total Available
- » 750 SF Office
- » 1,905 SF Warehouse
- » (1) Bay Door
- » 220V Power
- » Upstairs Storage



***All SF labels are approximations*

RYAN YOUNG



281.584.3320

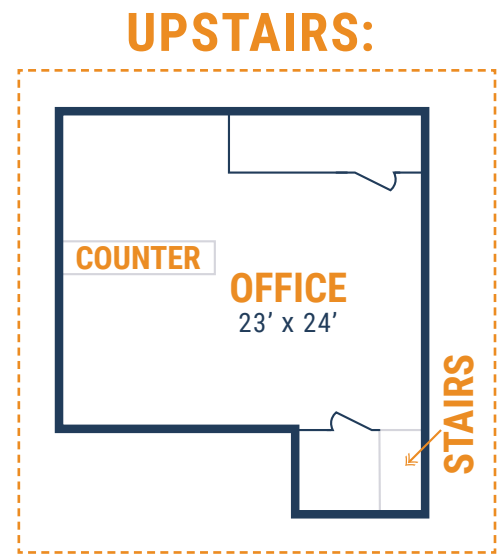
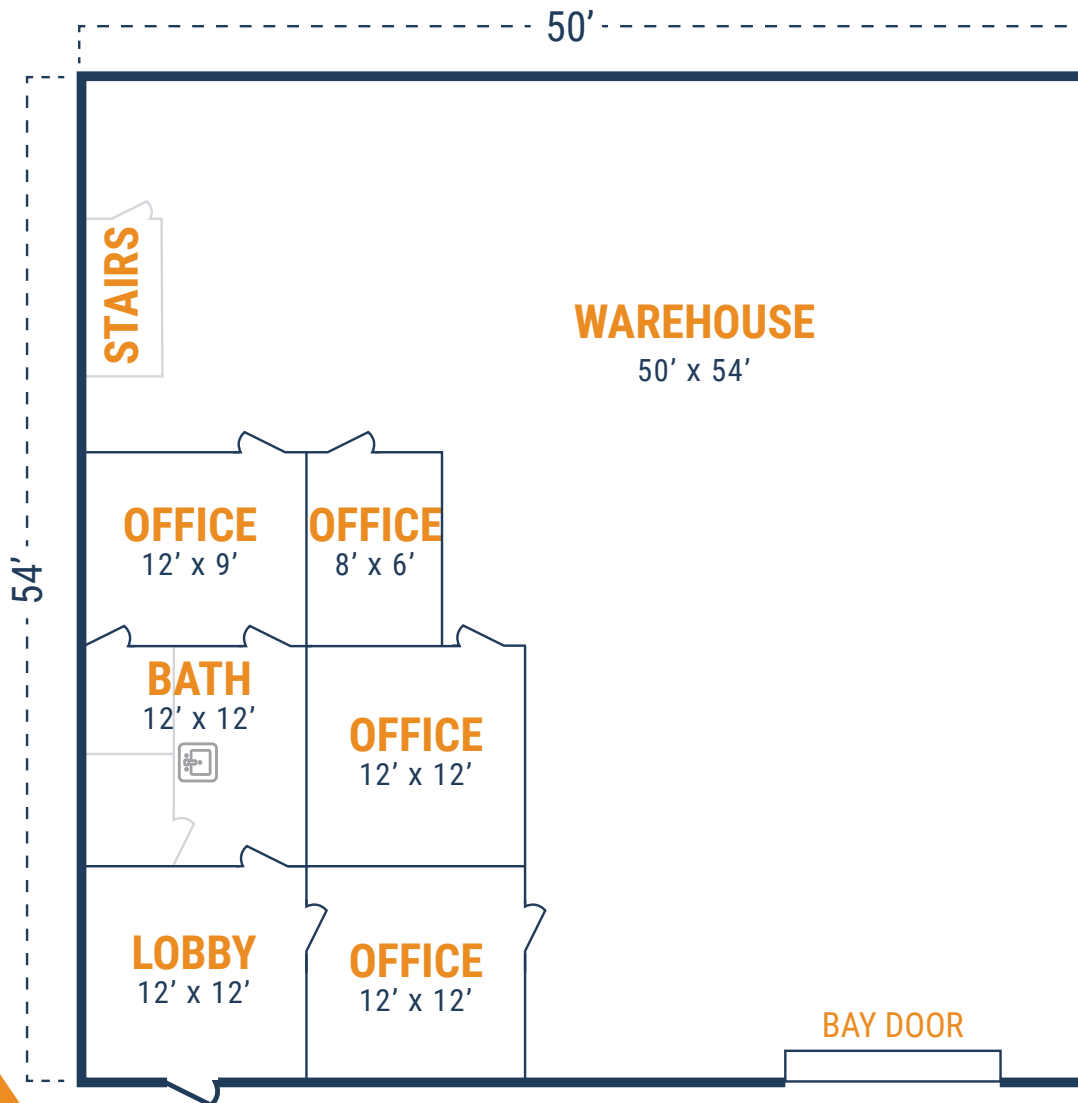


RYAN.YOUNG@FORT-COMPANIES.COM



FLOOR PLAN – AVAILABLE IMMEDIATELY

- » 2,750 SF Total Available
- » 720 SF Downstairs Office
- » 516 SF Upstairs Office
- » 2,030 SF Warehouse
- » (1) Bay Door
- » 3 Phase Power



**All SF labels are approximations

RYAN YOUNG



281.584.3320

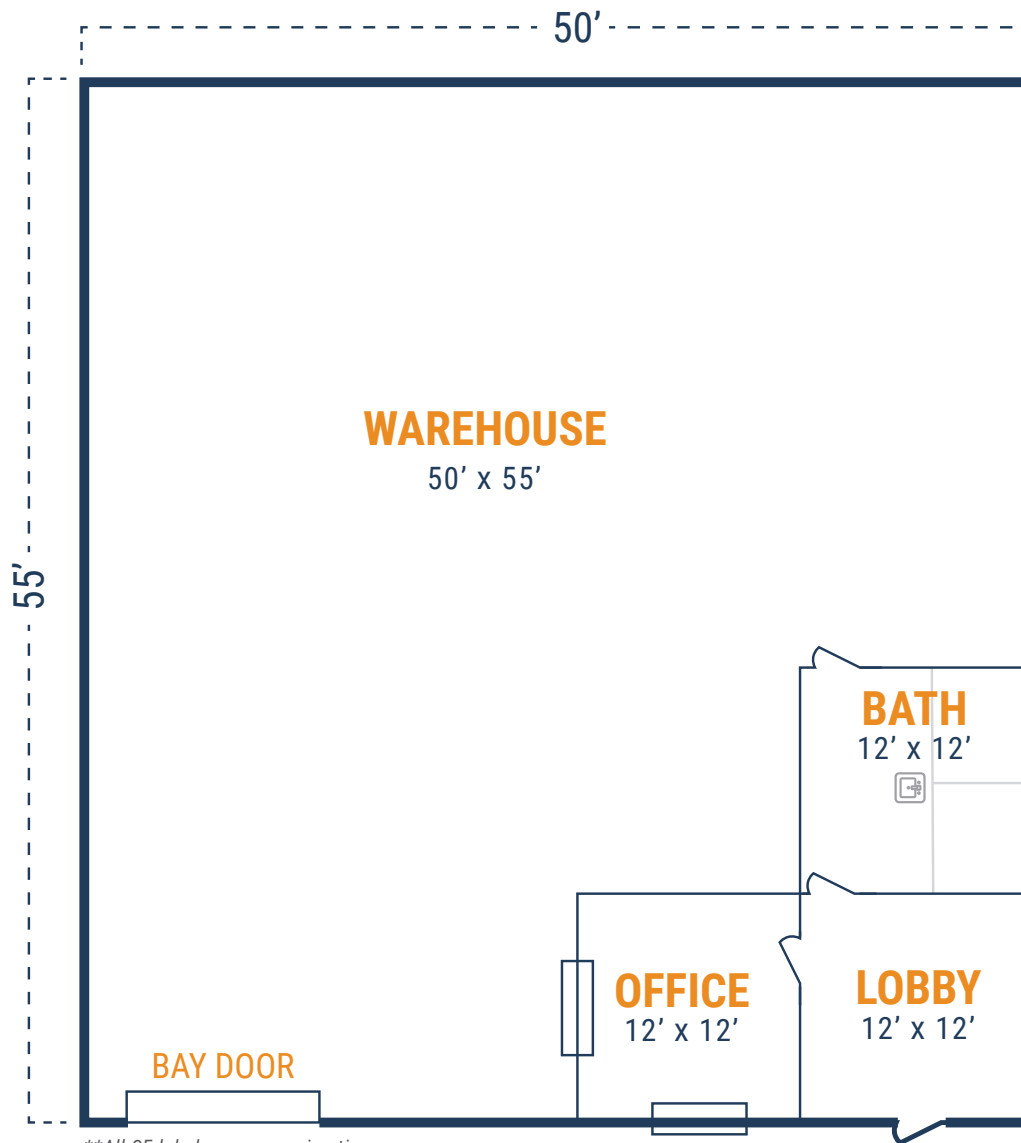


RYAN.YOUNG@FORT-COMPANIES.COM



FLOOR PLAN – AVAILABLE IMMEDIATELY

- » 2,750 SF Total Available
- » 432 SF Office
- » 2,318 SF Warehouse
- » (1) Bay Door
- » 3 Phase Power
- » Upstairs Storage



**All SF labels are approximations

RYAN YOUNG



281.584.3320



RYAN.YOUNG@FORT-COMPANIES.COM