

# THEALL BUSINESS PARK

6723 – 6825 THEALL ROAD, HOUSTON, TX 77066



**WILLOWBROOK/CYPRESS  
SUBMARKET**



**GREAT ACCESS TO TOM-  
BALL PKY AND BELTWAY 8**



**18' CLEAR HEIGHT**



**CLIMATE-CONTROLLED  
WAREHOUSE**



**OVERSIZED 12' X 14' GRADE  
LEVEL LOADING**



**3 PHASE POWER (240V)**

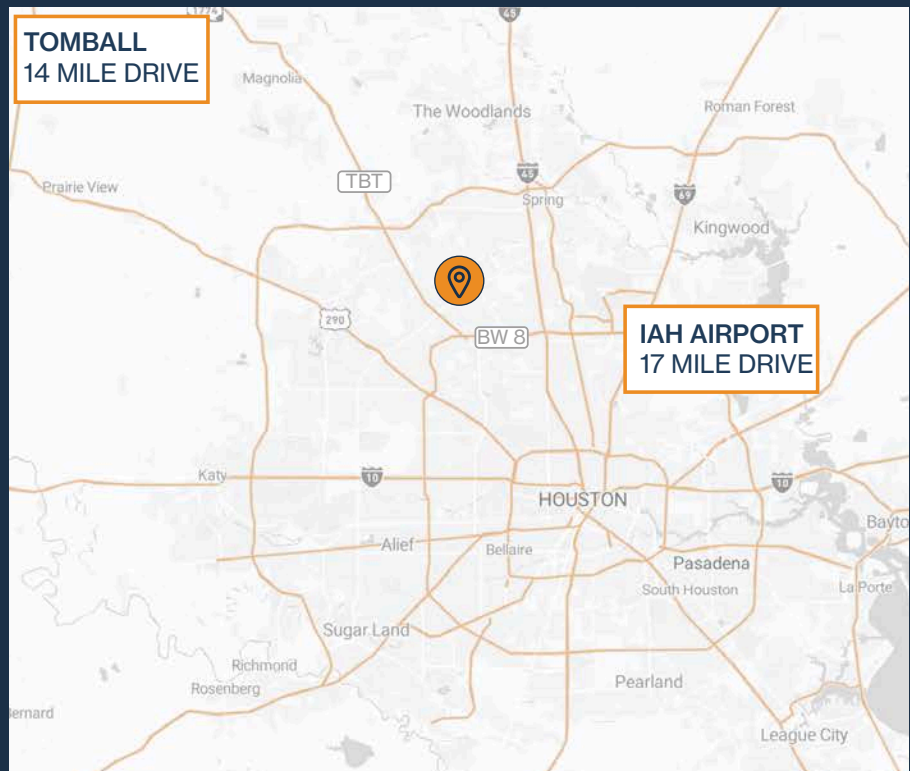


**FENCED & GATED**



**2,500 SF – 24,600 SF  
SUITES AVAILABLE**

**TOMBALL  
14 MILE DRIVE**



**RYAN YOUNG**



281.584.3320



RYAN.YOUNG@FORT-COMPANIES.COM



**FORT**  
LEASING

This information is deemed reliable, however, Fort makes no guarantee, warranties, or representations as to the completeness or accuracy thereof.

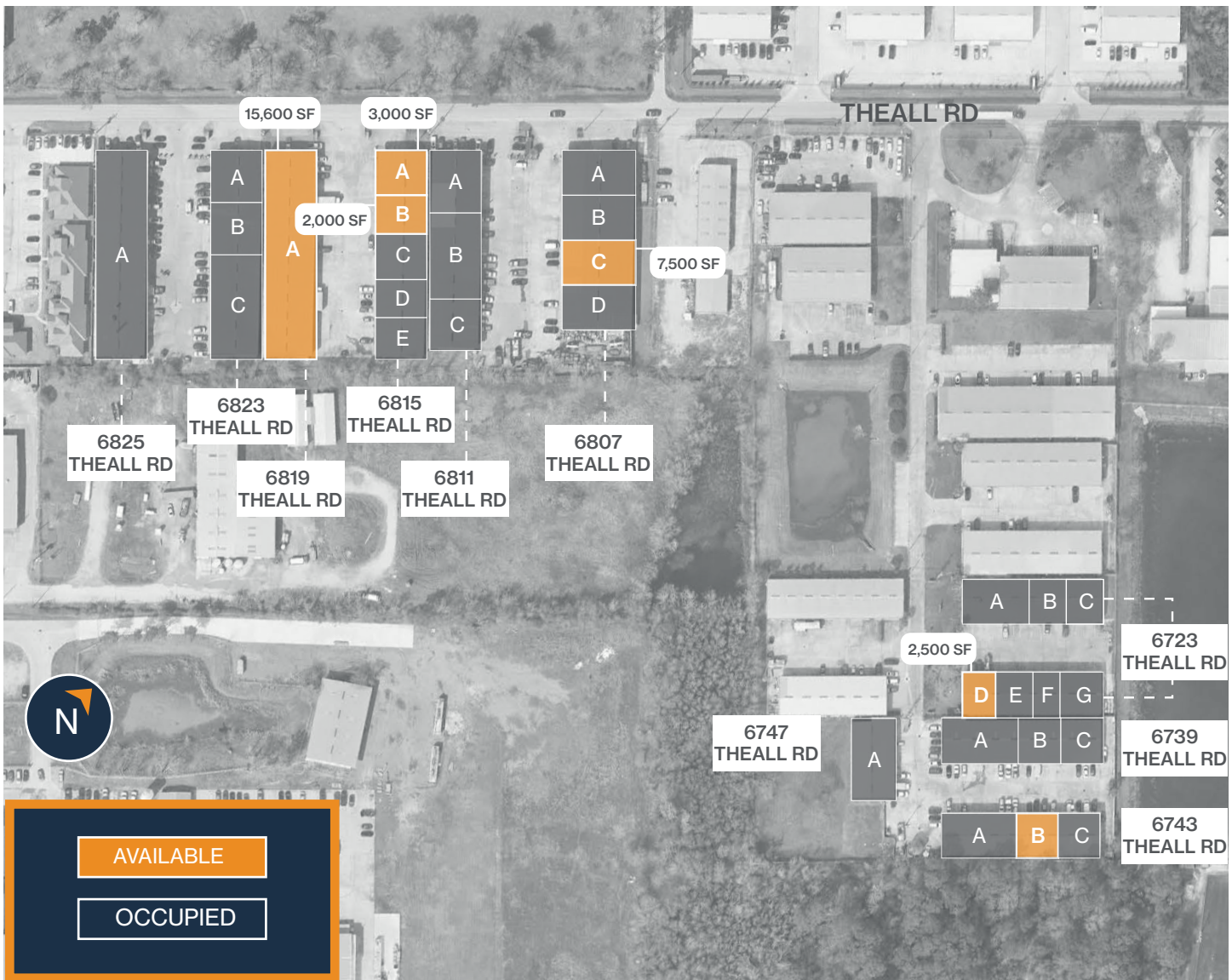


**FORT**  
LEASING

# THEALL BUSINESS PARK

6723 – 6825 Theall Road  
Houston, TX 77066

## SITE PLAN



**RYAN YOUNG**



281.584.3320



RYAN.YOUNG@FORT-COMPANIES.COM

This information is deemed reliable, however, Fort makes no guarantee, warranties, or representations as to the completeness or accuracy thereof.



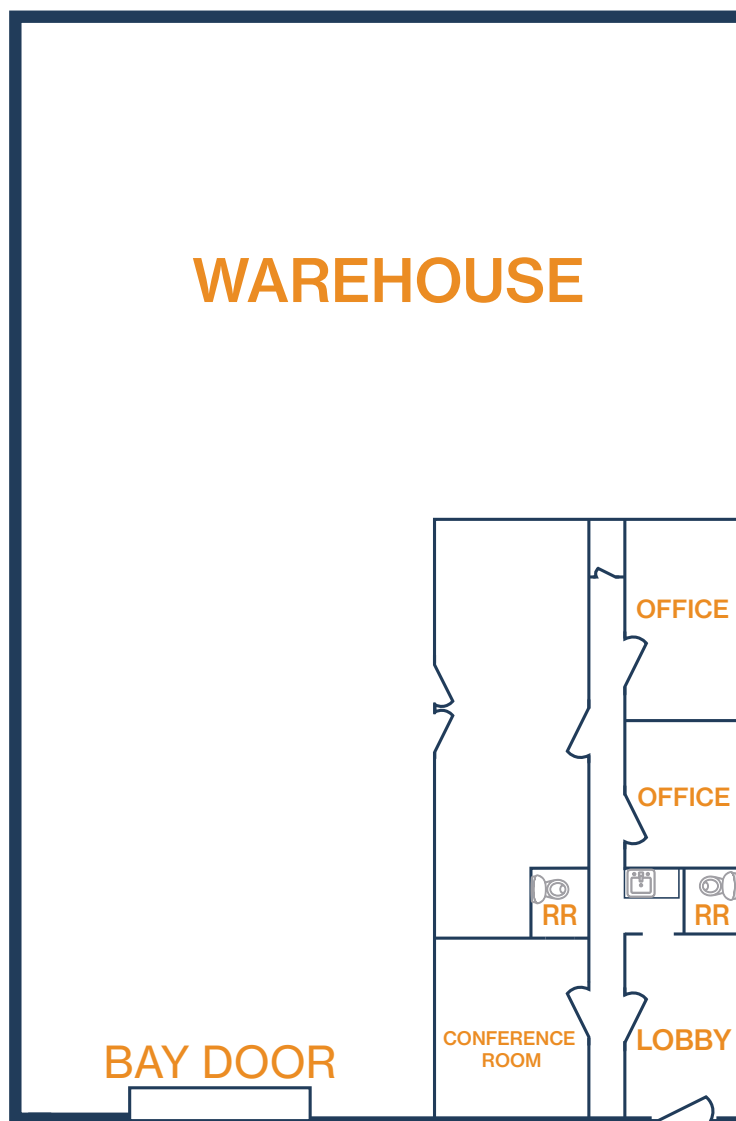
**FORT**  
LEASING

**THEALL BUSINESS PARK**

6743 Theall Road, Suite **B**  
Houston, TX 77066

## FLOOR PLAN – AVAILABLE IMMEDIATELY

- » 2,500 SF Total Available
- » 18' Clear Height
- » Fully Insulated Warehouse
- » Fenced and Gated
- » (1) 12'x14' Grade-Level Door



**RYAN YOUNG**



281.584.3320



RYAN.YOUNG@FORT-COMPANIES.COM

This information is deemed reliable, however, Fort makes no guarantee, warranties, or representations as to the completeness or accuracy thereof.



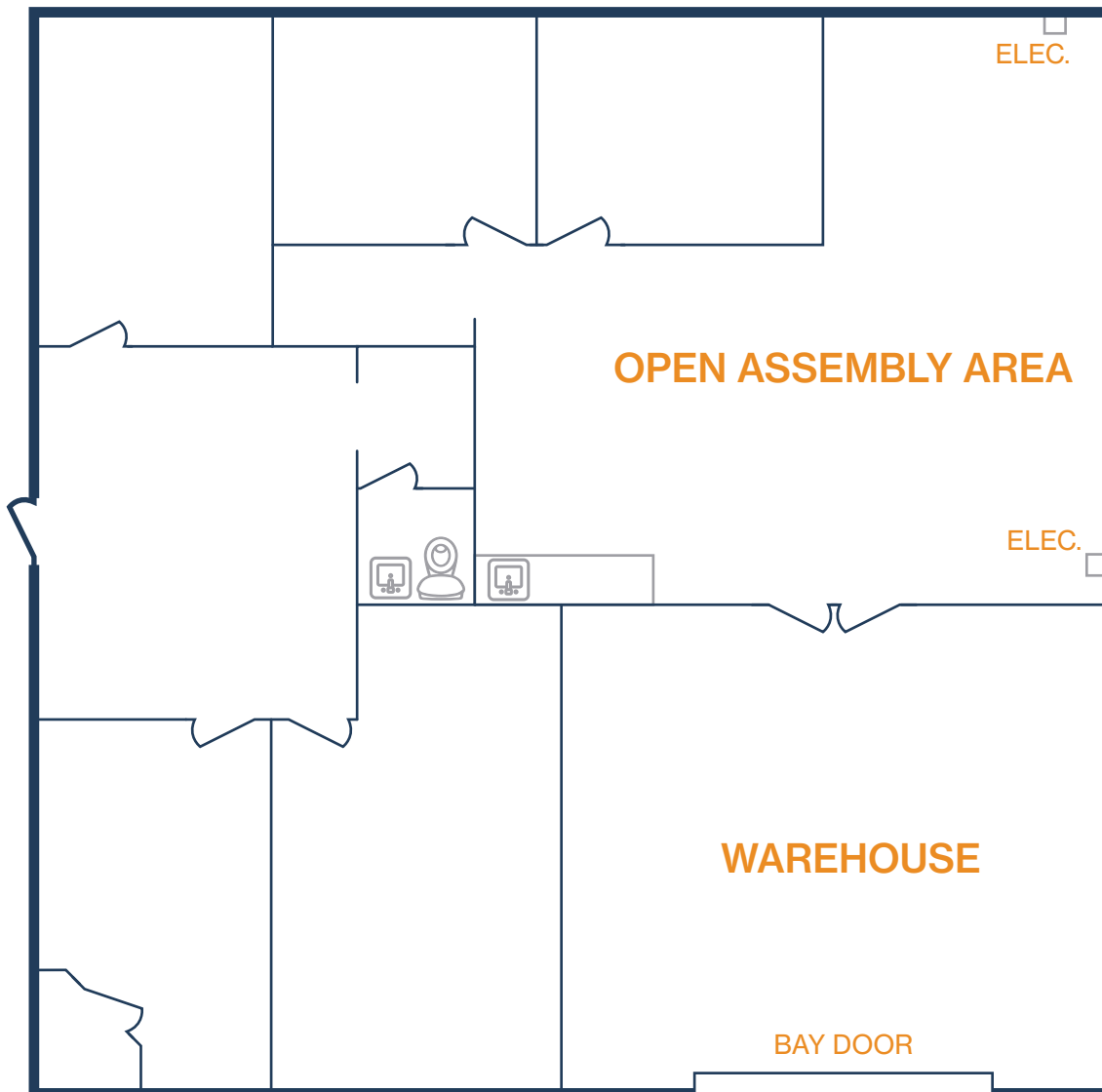
**FORT**  
LEASING

**THEALL BUSINESS PARK**

6723 Theall Road, Suite **D**  
Houston, TX 77066

## FLOOR PLAN – AVAILABLE IMMEDIATELY

- » 2,500 SF Total Available
- » 18' Clear Height
- » Fully Insulated Warehouse
- » Fenced and Gated
- » (1) 12'x14' Grade-Level Door



**RYAN YOUNG**



281.584.3320



RYAN.YOUNG@FORT-COMPANIES.COM

This information is deemed reliable, however, Fort makes no guarantee, warranties, or representations as to the completeness or accuracy thereof.



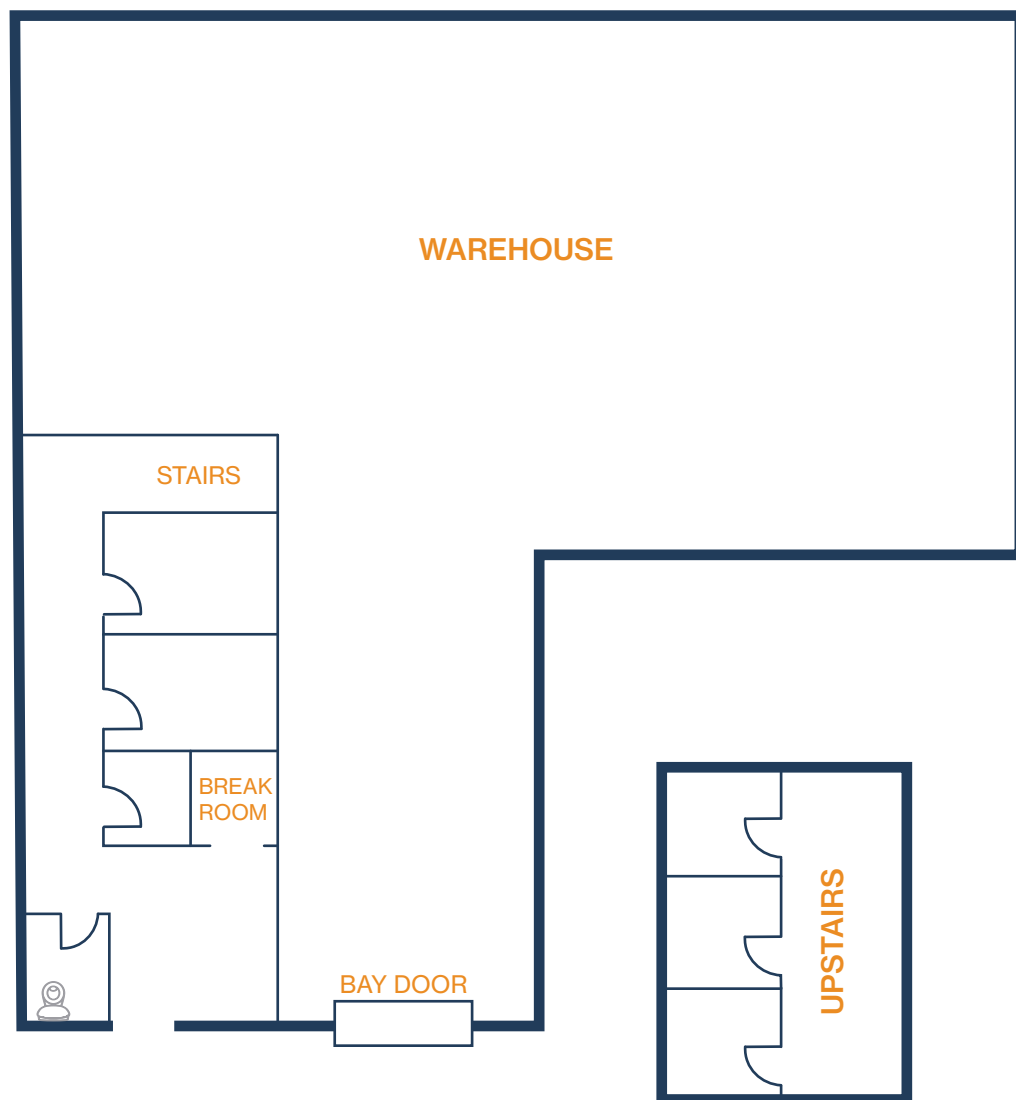
**FORT**  
LEASING

**THEALL BUSINESS PARK**

6807 Theall Road, Suite C  
Houston, TX 77066

## FLOOR PLAN – AVAILABLE IMMEDIATELY

» 7,500 SF Total Available



**RYAN YOUNG**



281.584.3320



RYAN.YOUNG@FORT-COMPANIES.COM

This information is deemed reliable, however, Fort makes no guarantee, warranties, or representations as to the completeness or accuracy thereof.



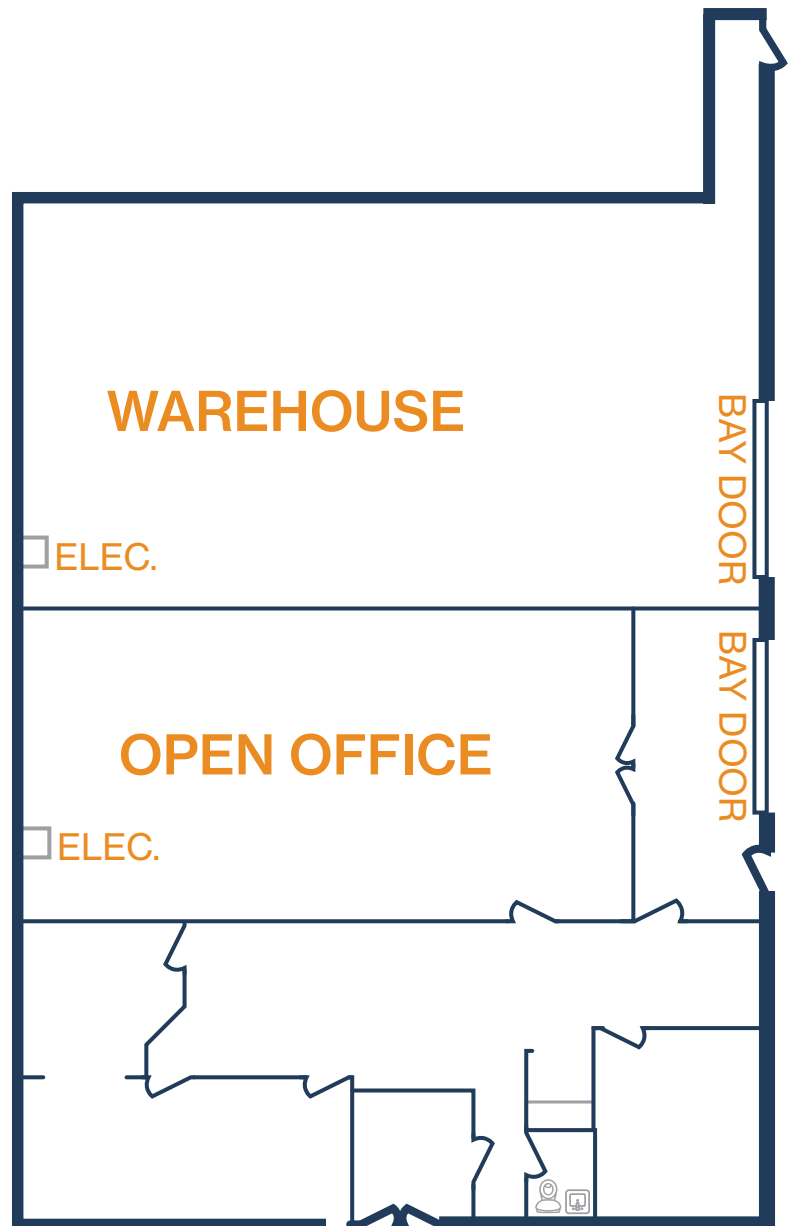
**FORT**  
LEASING

## THEALL BUSINESS PARK

6815 Theall Road, Suite **A and B**  
Houston, TX 77066

### FLOOR PLAN – AVAILABLE IMMEDIATELY

- » 5,000 SF Total Available
- » 18' Clear Height
- » Fully Insulated Warehouse
- » Fenced and Gated
- » (2) 12'x14' Grade-Level Doors



**RYAN YOUNG**



281.584.3320



RYAN.YOUNG@FORT-COMPANIES.COM

This information is deemed reliable, however, Fort makes no guarantee, warranties, or representations as to the completeness or accuracy thereof.



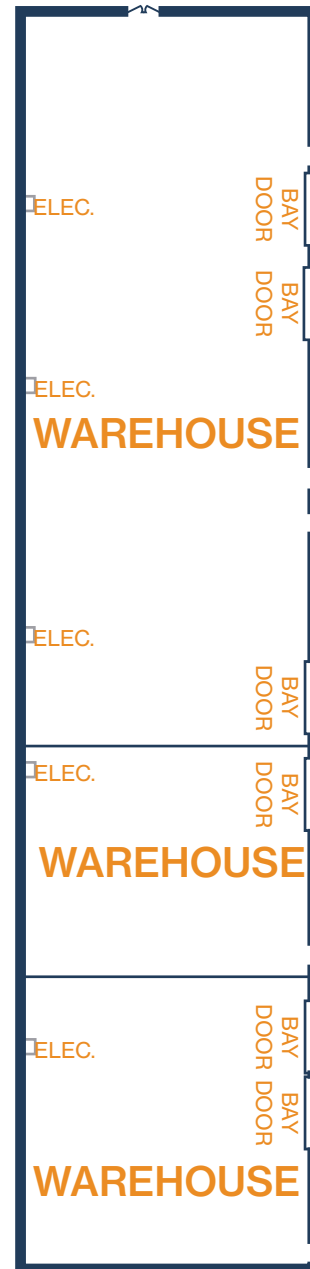
**FORT**  
LEASING

**THEALL BUSINESS PARK**

6819 Theall Road, Suite **A**  
Houston, TX 77066

## FLOOR PLAN – AVAILABLE IMMEDIATELY

- » 15,600 SF Warehouse Available
- » 18' Clear Height
- » Fully Insulated Warehouse
- » Fenced and Gated
- » (6) 12'x14' Grade-Level Doors



**RYAN YOUNG**



281.584.3320



RYAN.YOUNG@FORT-COMPANIES.COM

This information is deemed reliable, however, Fort makes no guarantee, warranties, or representations as to the completeness or accuracy thereof.