

STONECREST BUSINESS CENTER

11000 WILCREST DR. & 10804-10816 FALLSTONE RD., HOUSTON, TX 77099



**SOUTHWEST HOUSTON &
SUGARLAND SUBMARKET**



**GREAT ACCESS TO I-69
AND BELTWAY 8**



**100% CLIMATE-CONTROLLED
SUITES AVAILABLE**



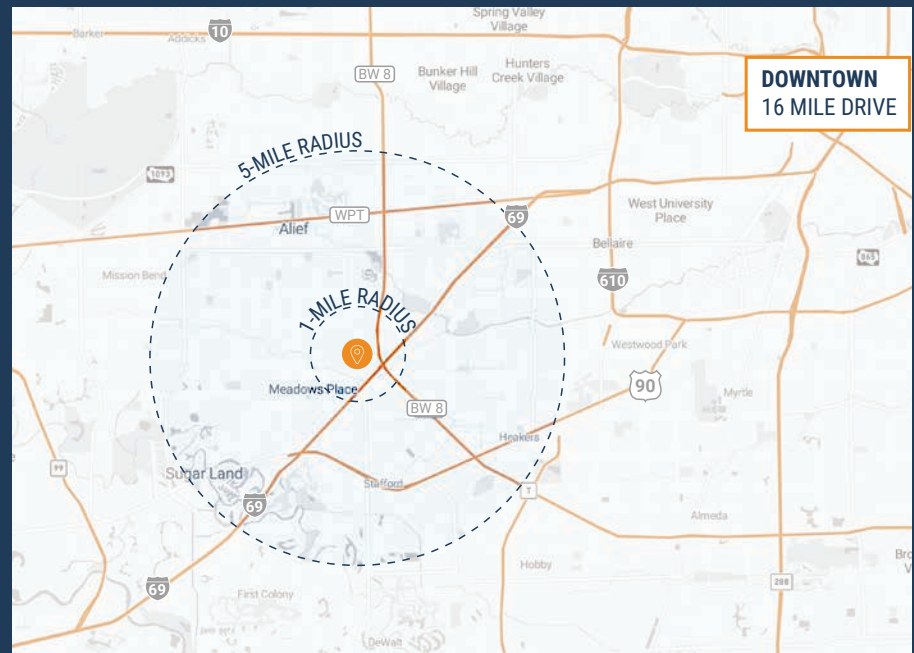
**GRADE-LEVEL, SEMI-DOCK,
AND DOCK-HIGH LOADING**



DRIVE-UP SURFACE PARKING



**1,570 SF - 12,230 SF
SUITES AVAILABLE**



THOMAS PFEIFER



281.504.7460

THOMAS.PFEIFER@FORT-COMPANIES.COM



FORT CAPITAL

This information is deemed reliable, however, Fort Capital makes no guarantee, warranties, or representations as to the completeness or accuracy thereof.

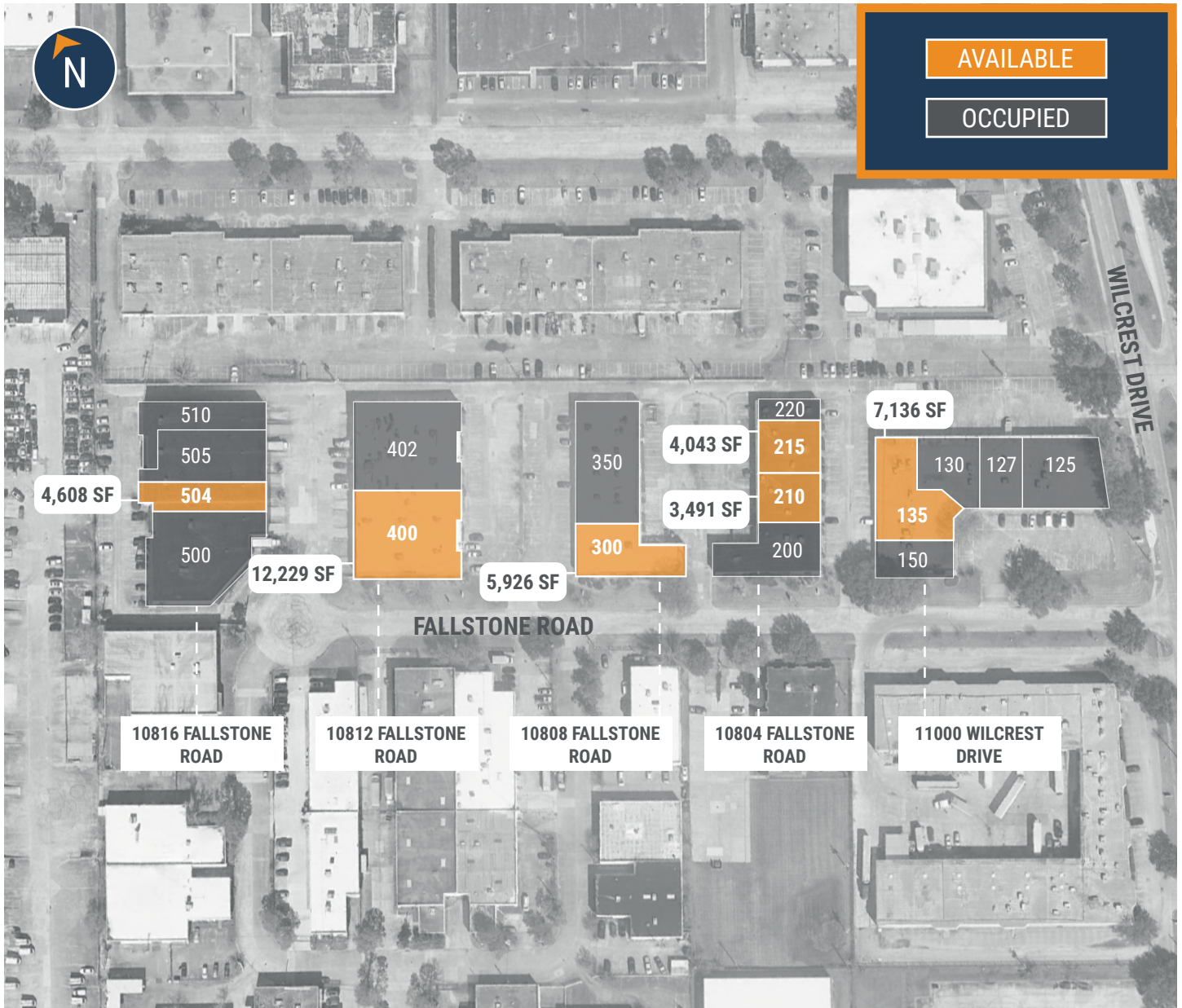


FORT CAPITAL

STONECREST BUSINESS CENTER

11000 Wilcrest Dr. & 10804-10816 Fallstone Rd.
Houston, TX 77099

SITE PLAN



THOMAS PFEIFER



281.504.7460



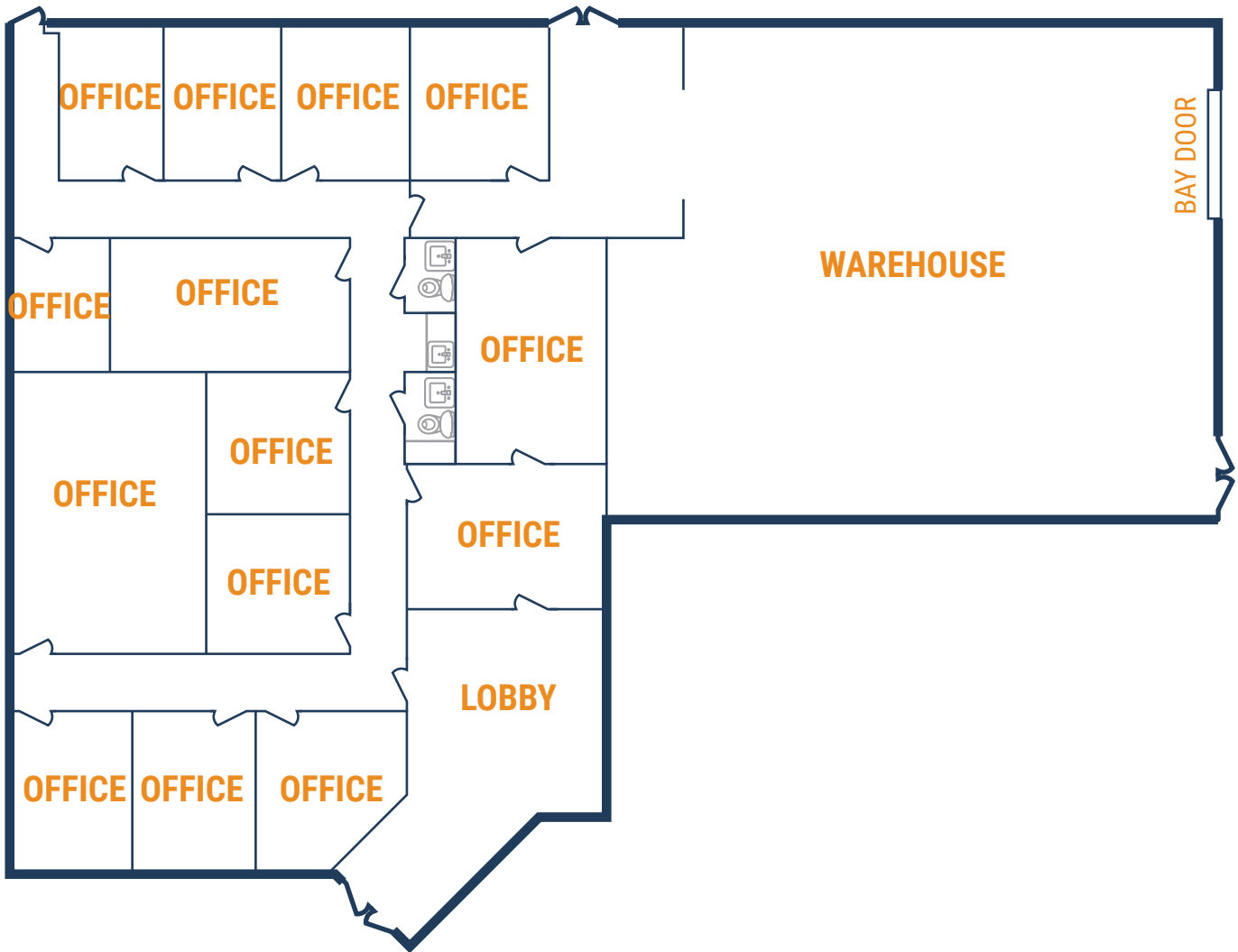
THOMAS.PFEIFER@FORT-COMPANIES.COM

This information is deemed reliable, however, Fort Capital makes no guarantee, warranties, or representations as to the completeness or accuracy thereof.



FLOOR PLAN – AVAILABLE IMMEDIATELY

- » 7,136 SF Total Available
- » 4,607 SF Office
- » 2,529 SF Warehouse
- » Insulated Warehouse
- » (1) 12'x14' Grade-Level Door



THOMAS PFEIFER



281.504.7460

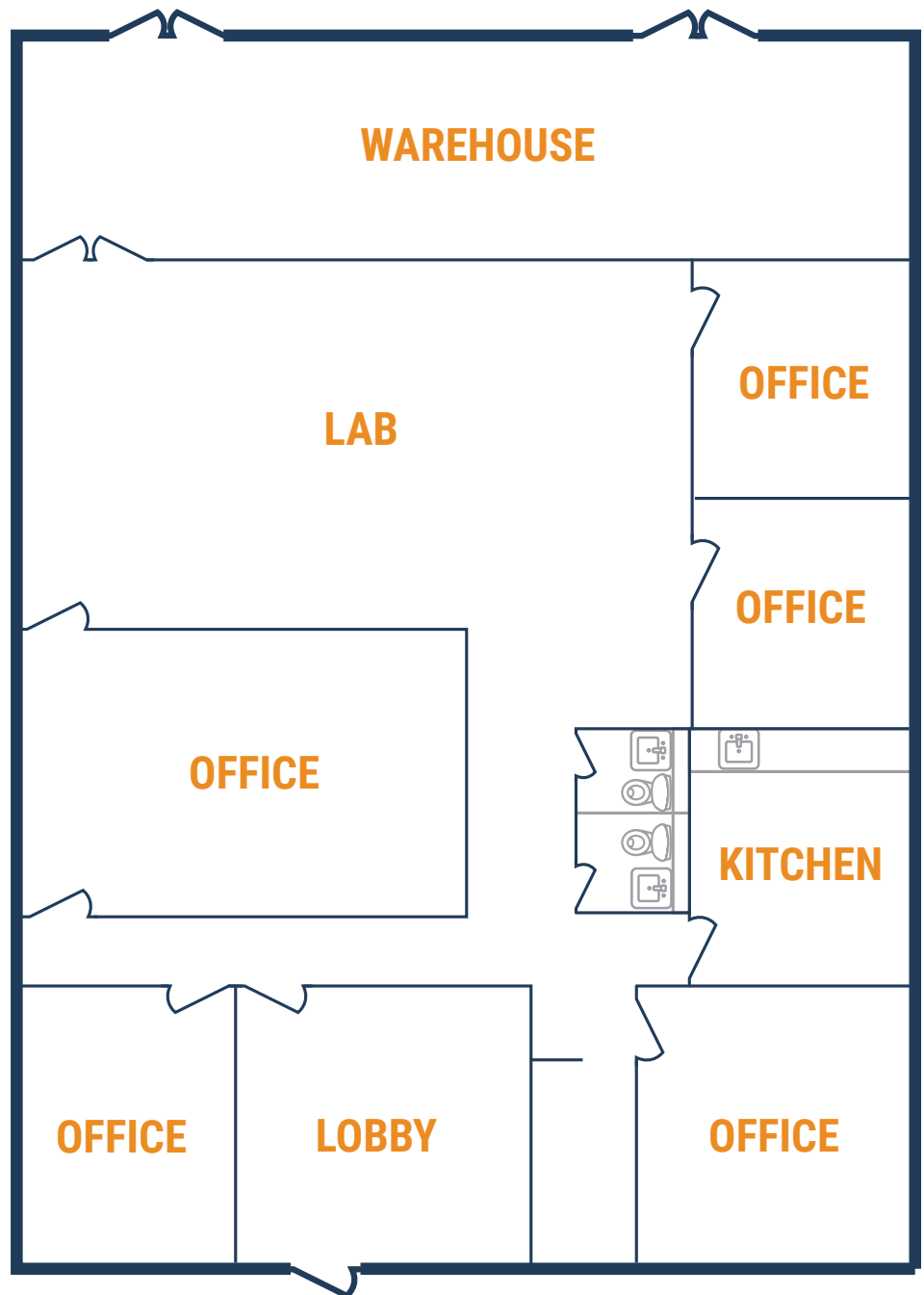


THOMAS.PFEIFER@FORT-COMPANIES.COM



FLOOR PLAN – AVAILABLE IMMEDIATELY

- » 3,491 SF Total Available
 - » 1,347 SF Office
 - » 1,500 SF Lab
 - » 644 SF Warehouse
- » 100% Climate-Controlled
- » (2) 8'x8' Grade-Level Doors



THOMAS PFEIFER



281.504.7460

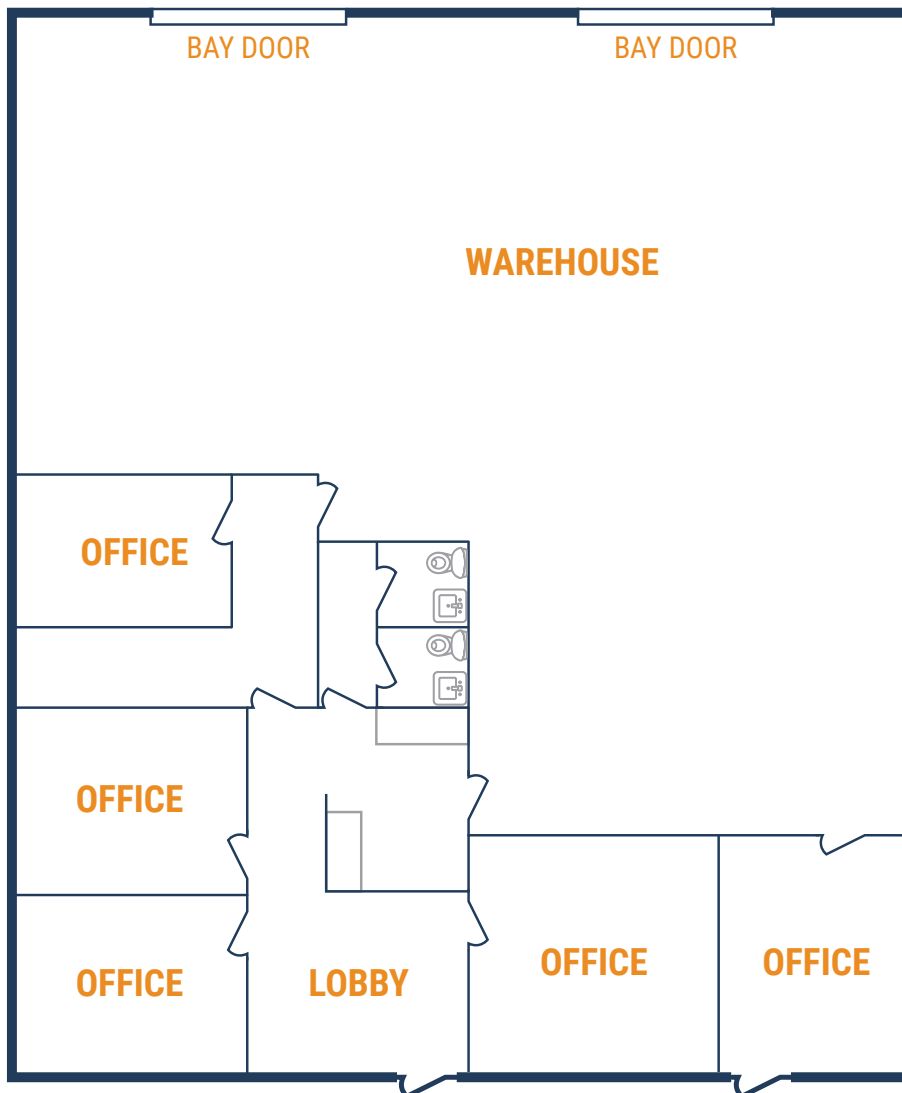


THOMAS.PFEIFER@FORT-COMPANIES.COM



FLOOR PLAN – AVAILABLE IMMEDIATELY

- » 4,043 SF Total Available
- » 1,643 SF Office
- » 2,400 SF Warehouse
- » 100% Climate-Controlled
- » (2) 12'x10' Grade-Level Doors



THOMAS PFEIFER



281.504.7460

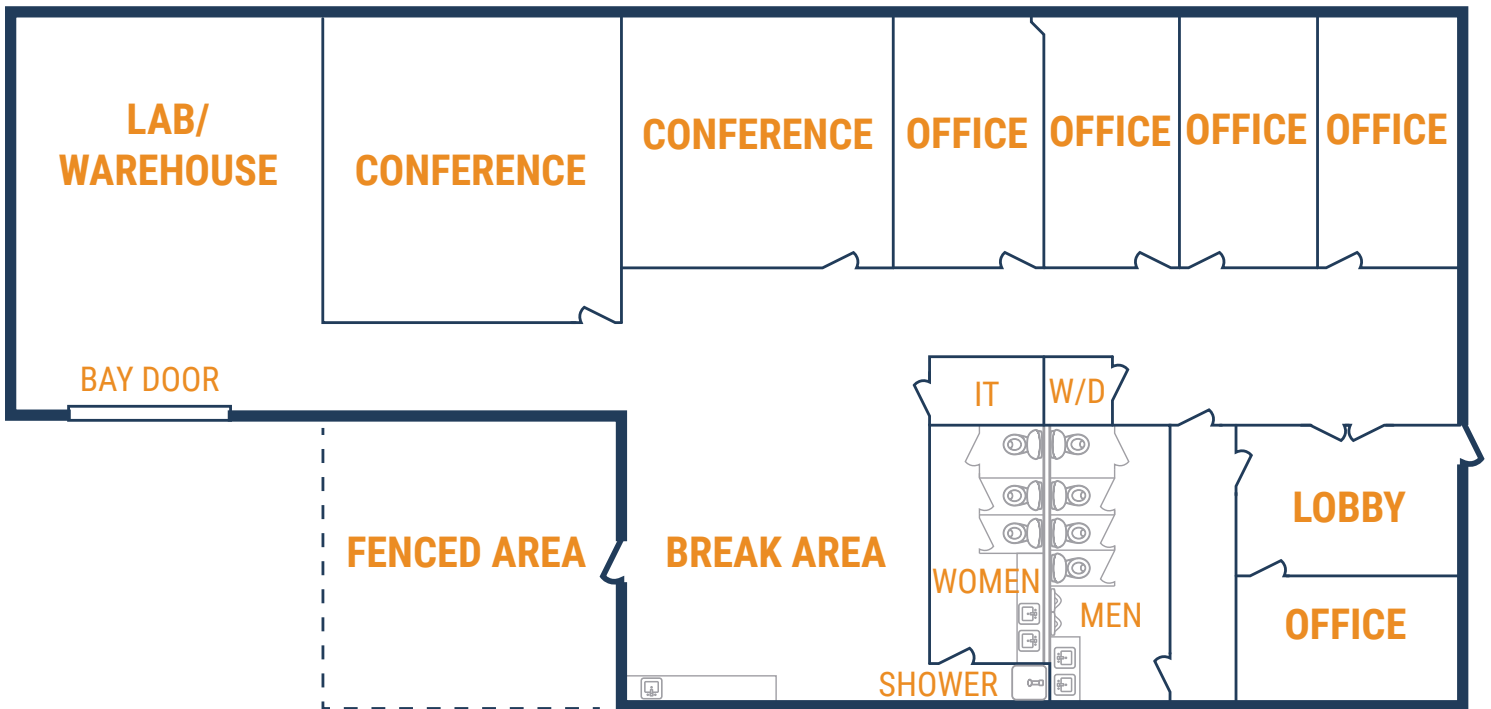


THOMAS.PFEIFER@FORT-COMPANIES.COM



FLOOR PLAN – AVAILABLE IMMEDIATELY

- » 5,926 SF Total Available
- » 3,626 SF Office
- » 2,300 SF Lab/Warehouse
- » 100% Climate-Controlled
- » (1) 12'x10' Grade-Level Doors
- » 700 SF Fenced Outside Storage



THOMAS PFEIFER



281.504.7460

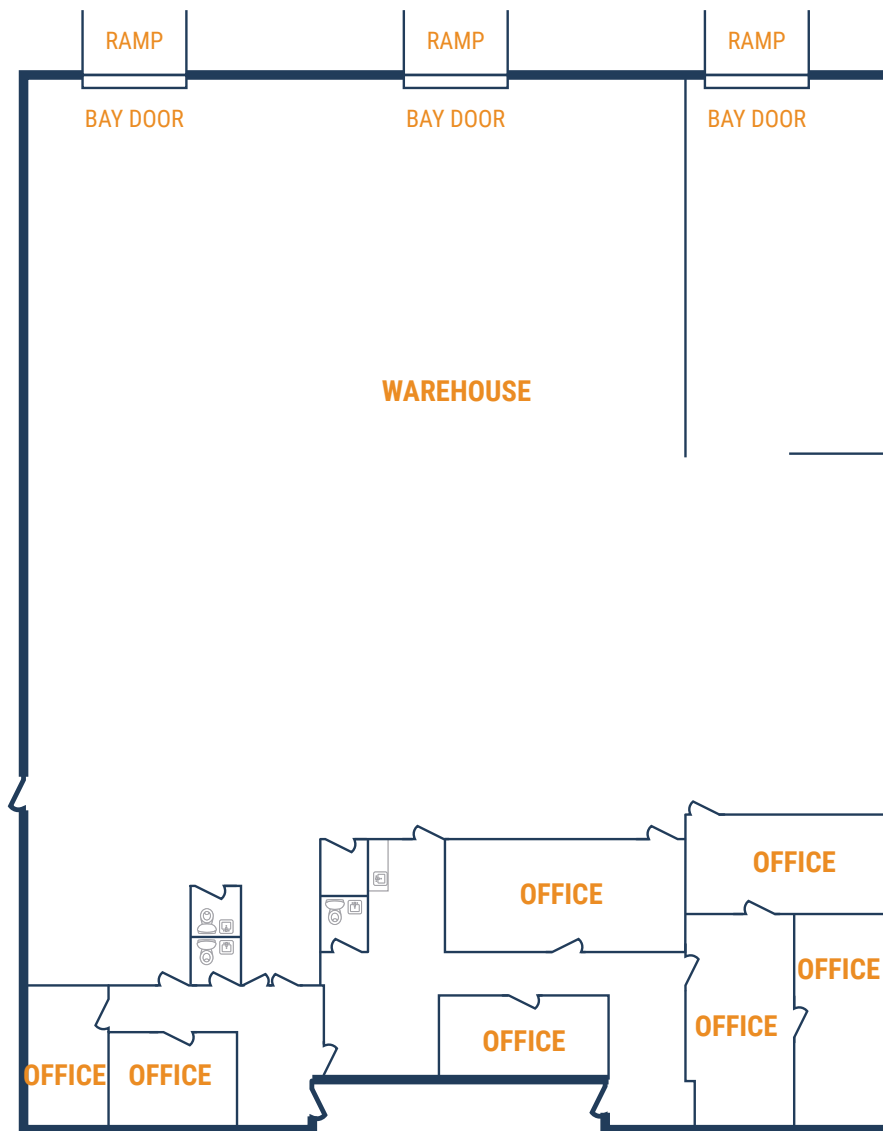


THOMAS.PFEIFER@FORT-COMPANIES.COM



FLOOR PLAN – AVAILABLE MAY 2024

- » 12,229 SF Total Available
- » 2,849 SF Office
- » 9,380 SF Warehouse
- » Climate-Controlled Warehouse
- » (3) Ramps



THOMAS PFEIFER



281.504.7460



THOMAS.PFEIFER@FORT-COMPANIES.COM



FLOOR PLAN – AVAILABLE IMMEDIATELY

- » 4,608 SF Total Available
- » *Build-to-Suit Office/Warehouse*
- » (1) 12'x10' Grade-Level Door with ramp



THOMAS PFEIFER



281.504.7460



THOMAS.PFEIFER@FORT-COMPANIES.COM