

# SOUTHWEST BUSINESS PARK

11000 STANCLIFF ROAD & 10325 – 10415 LANDSBURY DRIVE,  
HOUSTON, TX 77099



**SOUTHWEST HOUSTON/  
SUGAR LAND SUBMARKET**



**GREAT ACCESS TO BELTWAY 8  
AND I-69**



**12' – 18' CLEAR HEIGHT**



**DOCK-HIGH, SEMI-DOCK, AND  
GRADE LEVEL LOADING**



**FENCED YARD SPACE**



**2,250 SF – 15,000 SF SUITES**



**THOMAS PFEIFER**



281.504.7460



THOMAS.PFEIFER@FORT-COMPANIES.COM



FORT CAPITAL

*This information is deemed reliable, however, Fort Capital makes no guarantee, warranties, or representations as to the completeness or accuracy thereof.*

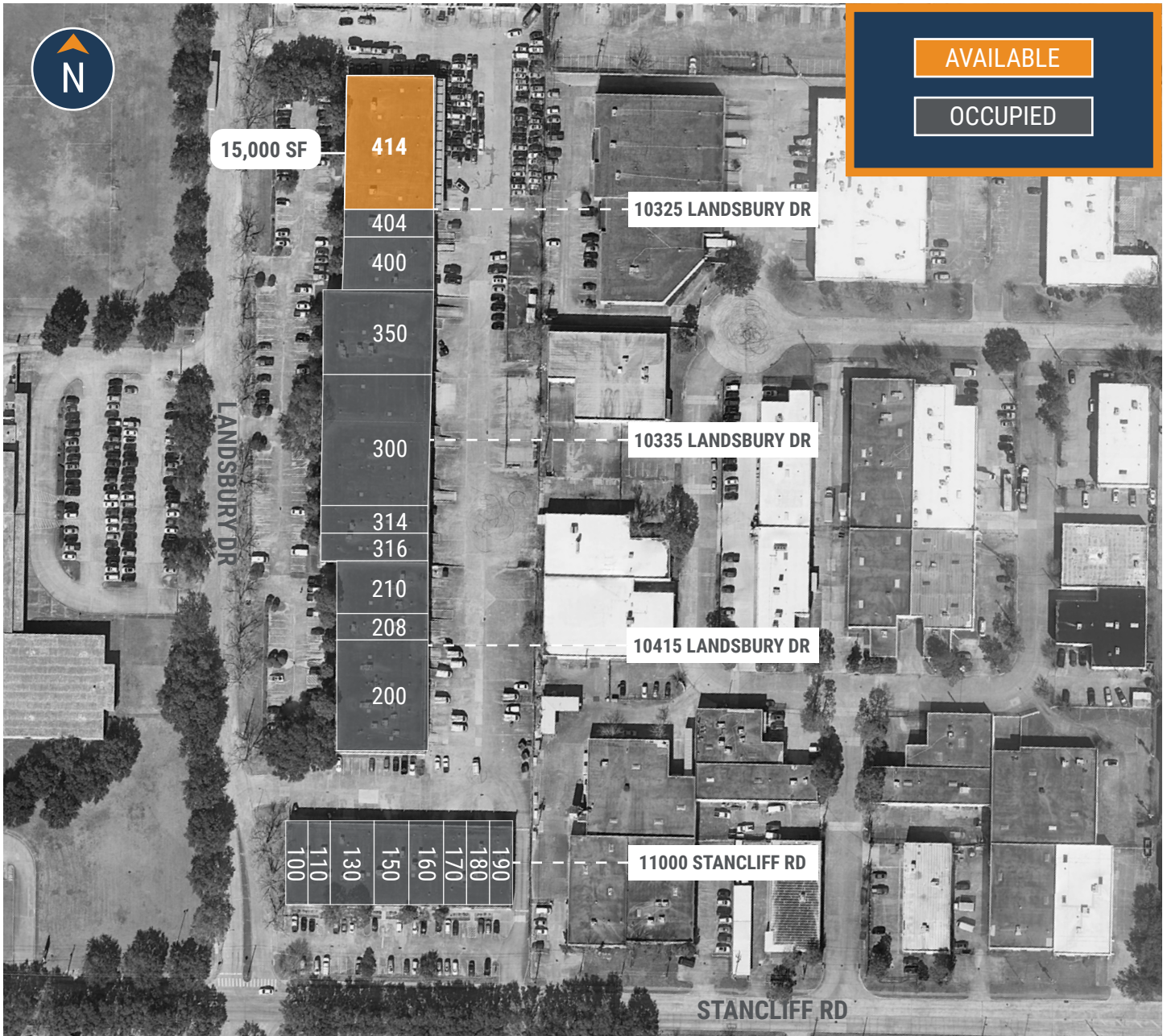


FORT CAPITAL

# SOUTHWEST BUSINESS PARK

11000 Stancliff Road & 10325 – 10415 Landsbury Drive  
Houston, TX 77099

## SITE PLAN



# THOMAS PFEIFER



281.504.7460



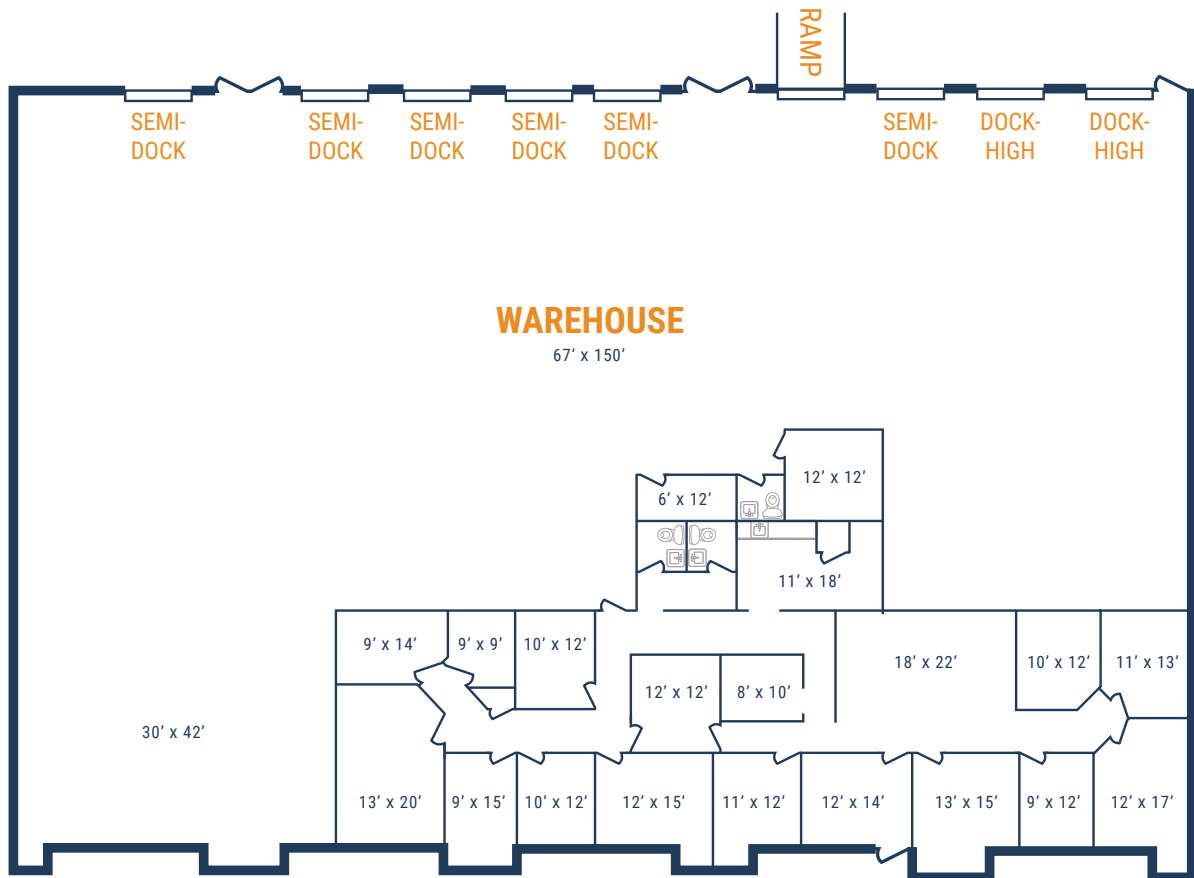
THOMAS.PFEIFER@FORT-COMPANIES.COM

*This information is deemed reliable, however, Fort Capital makes no guarantee, warranties, or representations as to the completeness or accuracy thereof.*



## FLOOR PLAN – AVAILABLE DECEMBER 2023

- » 15,000 SF Total Available
- » 4,265 SF Office
- » 10,735 SF Warehouse
- » 16' Clear Height
- » (2) Dock-High Doors
- » (6) Semi-Dock Doors
- » (1) Ramp
- » 5,500 SF Fenced Yard



\*\*All SF labels are approximations

**THOMAS PFEIFER**



281.504.7460



THOMAS.PFEIFER@FORT-COMPANIES.COM