

CORPORATE PARK WEST

1718 NORTH FRY ROAD, HOUSTON, TX 77041



**WEST HOUSTON/ENERGY
CORRIDOR SUBMARKET**



**GREAT ACCESS TO I-10
AND FRY ROAD**



14-17' & 25' CLEAR HEIGHTS



TILT-WALL CONSTRUCTION



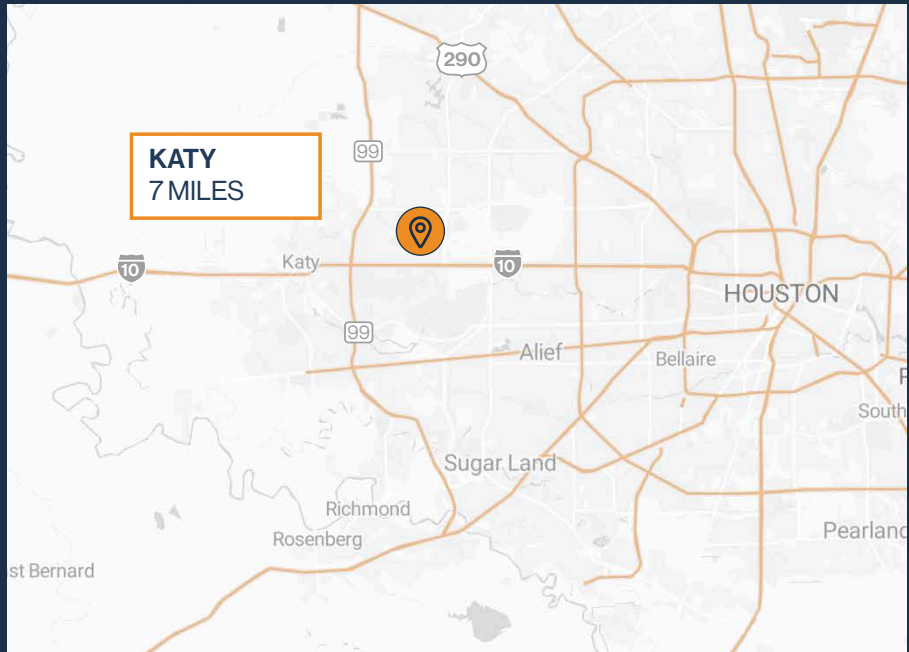
**DOCK-HIGH AND SEMI-DOCK
LOADING**



DRIVE-UP SURFACE PARKING



**1,982 SF – 10,611 SF
SUITES AVAILABLE**



RYAN YOUNG



281.584.3320



RYAN.YOUNG@FORT-COMPANIES.COM



FORT
LEASING

This information is deemed reliable, however, Fort makes no guarantee, warranties, or representations as to the completeness or accuracy thereof.



SITE PLAN



RYAN YOUNG



281.584.3320

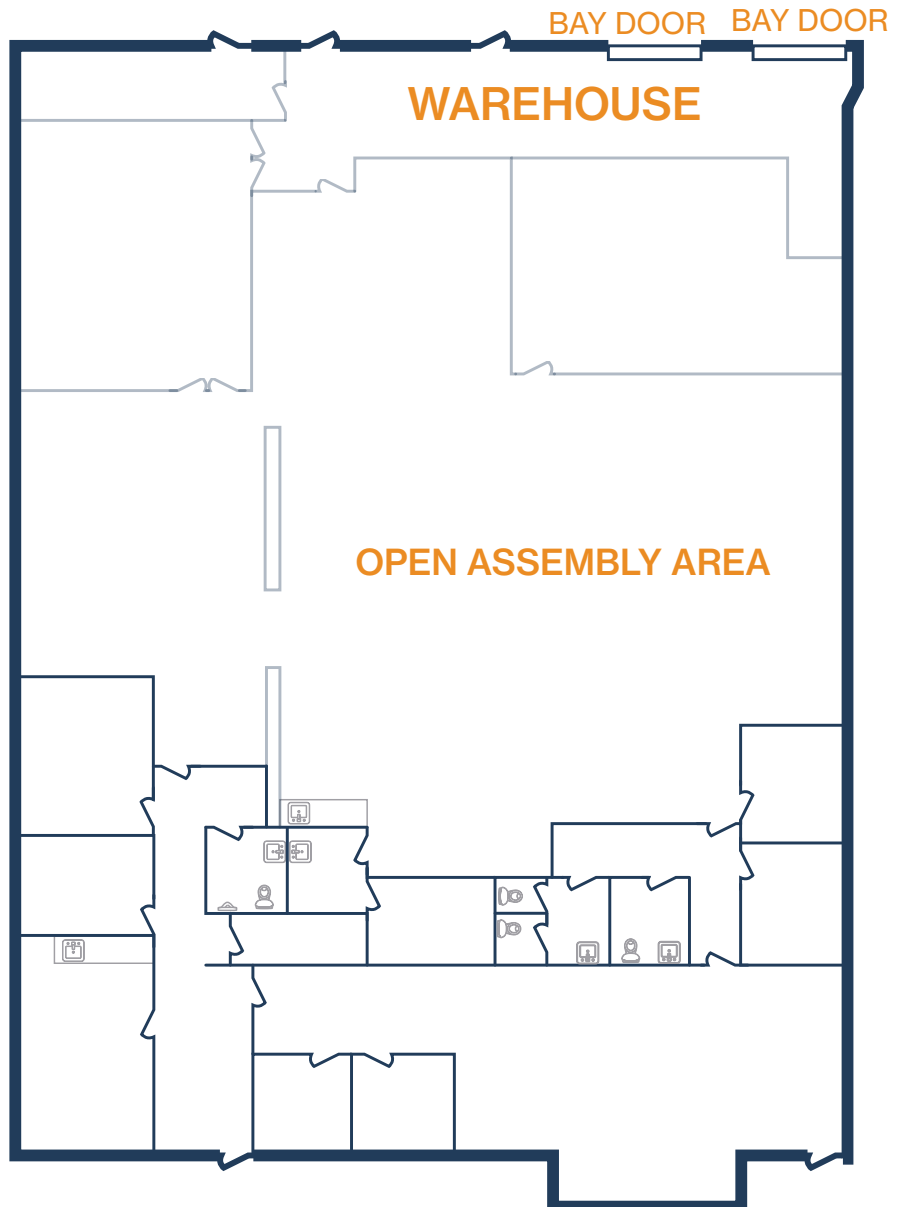


RYAN.YOUNG@FORT-COMPANIES.COM



FLOOR PLAN — AVAILABLE IMMEDIATELY

- » 10,611 SF Total Available
 - » 9,573 SF Office
 - » 1,038 SF Warehouse
- » (2) Dock-High Doors
- » Glass Storefront
- » 3 Phase Power



RYAN YOUNG



281.584.3320

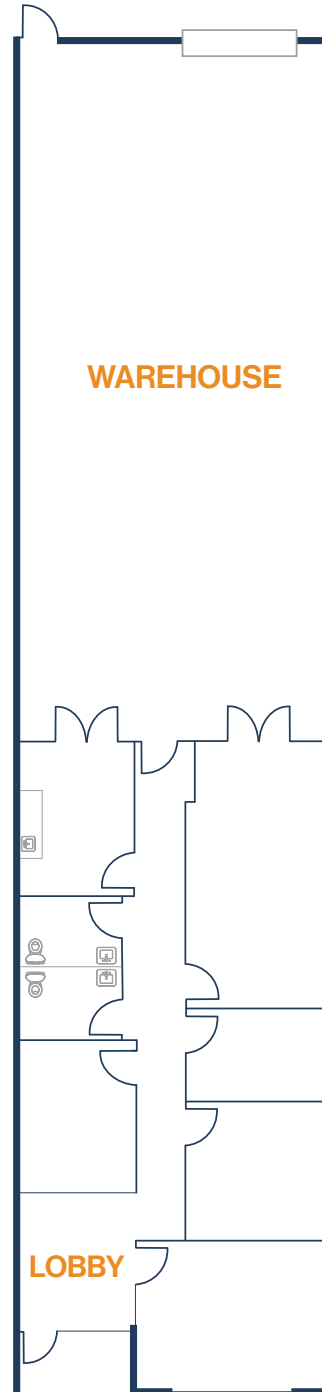


RYAN.YOUNG@FORT-COMPANIES.COM



FLOOR PLAN — AVAILABLE IMMEDIATELY

- » 3,313 SF Total Available
 - » 48% Office
- » (1) Dock High Door
- » Glass Storefront
- » 3 Phase Power



RYAN YOUNG



281.584.3320

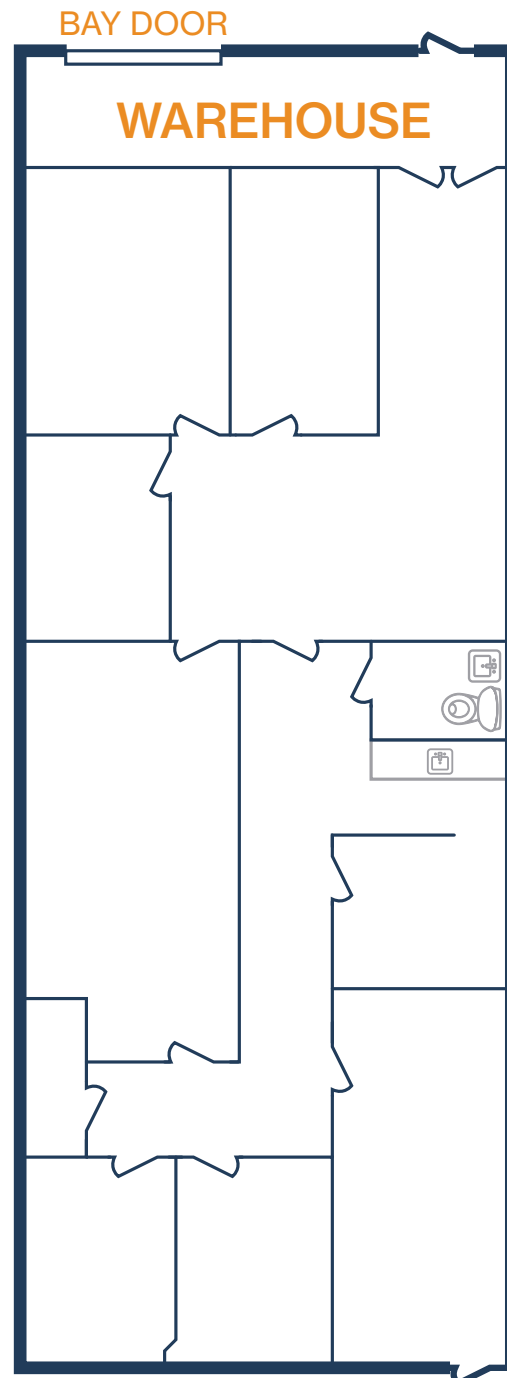


RYAN.YOUNG@FORT-COMPANIES.COM



FLOOR PLAN — AVAILABLE IMMEDIATELY

- » 2,400 SF Total Available
 - » 2,176 SF Office
 - » 224 SF Warehouse
- » Former Salon
- » Glass Storefront
- » 3 Phase Power



RYAN YOUNG



281.584.3320



RYAN.YOUNG@FORT-COMPANIES.COM



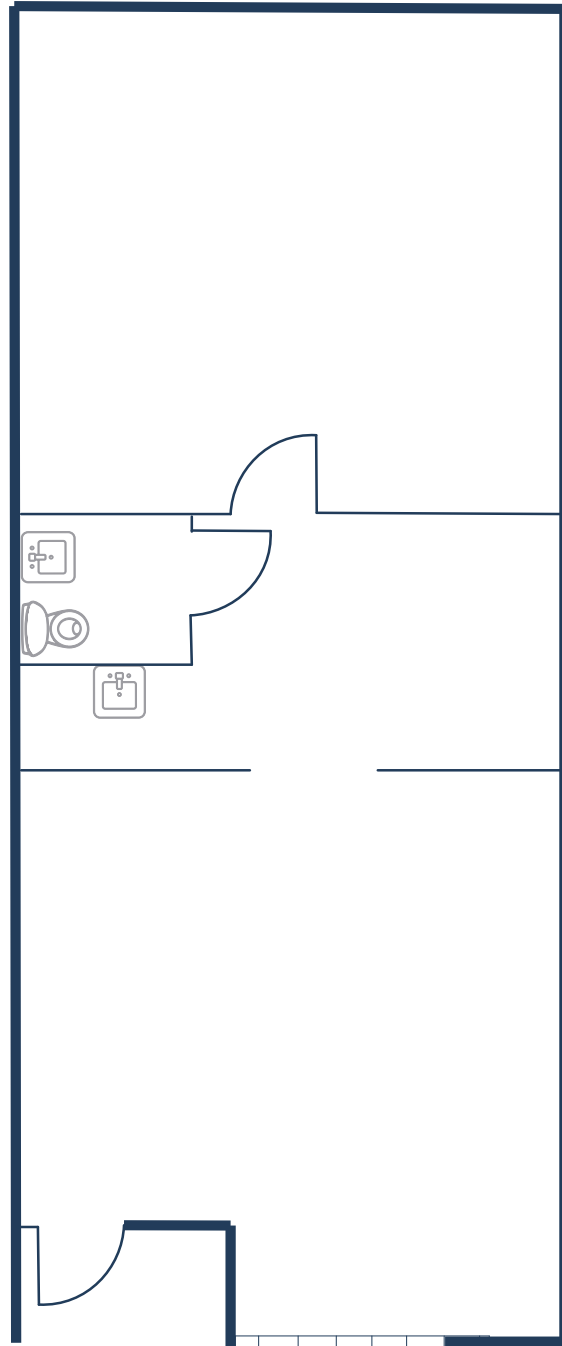
FORT
LEASING

CORPORATE PARK WEST

1718 N Fry Road, Suite 415
Houston, TX 77041

FLOOR PLAN — AVAILABLE IMMEDIATELY

- » 1,625 SF Total Available
- » Tenant-Controlled HVAC
- » 3-Phase Power (120V)
- » Glass Storefront



RYAN YOUNG

281.584.3320

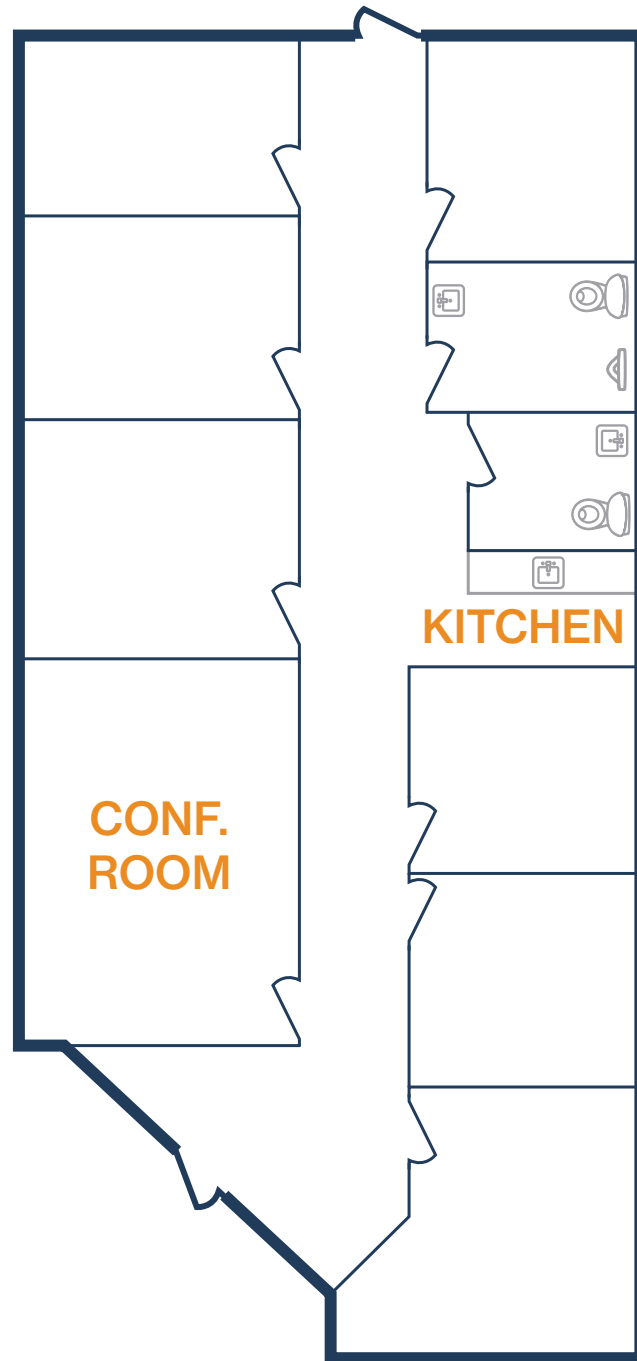
RYAN.YOUNG@FORT-COMPANIES.COM

This information is deemed reliable, however, Fort makes no guarantee, warranties, or representations as to the completeness or accuracy thereof.



FLOOR PLAN — AVAILABLE IMMEDIATELY

- » 1,982 SF Total Available
 - » 100% Office
- » Tenant-Controlled HVAC
- » 3-Phase Power (120V)
- » Glass Storefront



RYAN YOUNG

 281.584.3320

 RYAN.YOUNG@FORT-COMPANIES.COM



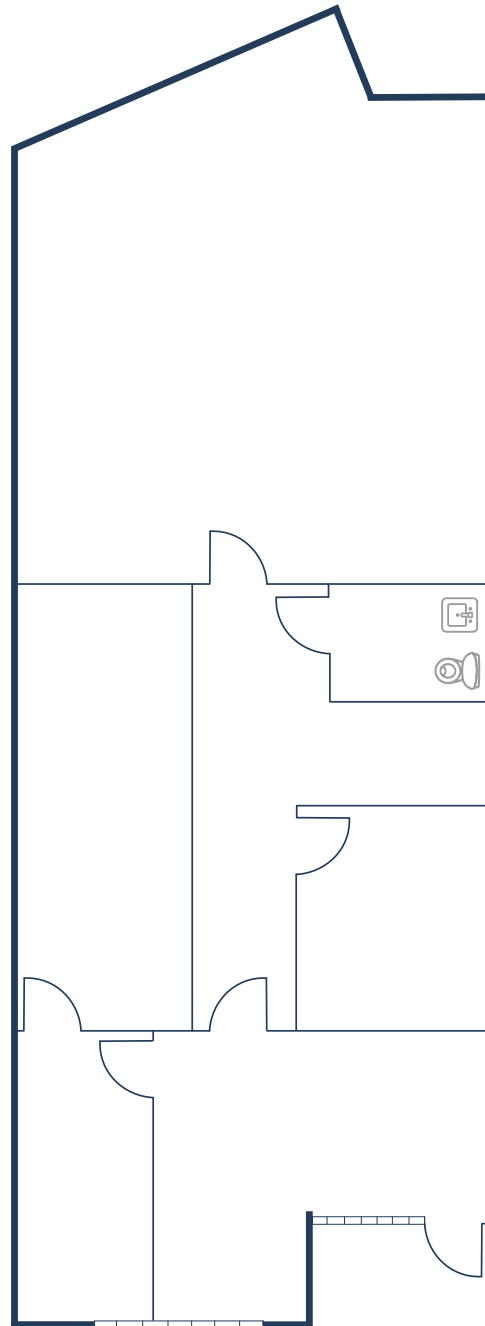
FORT
LEASING

CORPORATE PARK WEST

1718 N Fry Road, Suite 460
Houston, TX 77041

FLOOR PLAN — AVAILABLE IMMEDIATELY

- » 1,685 SF Total Available
- » Glass Storefront
- » 3 Phase Power



RYAN YOUNG

 281.584.3320

 RYAN.YOUNG@FORT-COMPANIES.COM

This information is deemed reliable, however, Fort makes no guarantee, warranties, or representations as to the completeness or accuracy thereof.