

# JULIE MARIE BUSINESS CENTER

21414 JULIE MARIE LANE, KATY, TX 77449



**WEST HOUSTON/  
KATY SUBMARKET**



**GREAT ACCESS TO I-10  
AND HWY-99**



**AMPLE TENANT PARKING**



**TENANT-CONTROLLED HVAC**



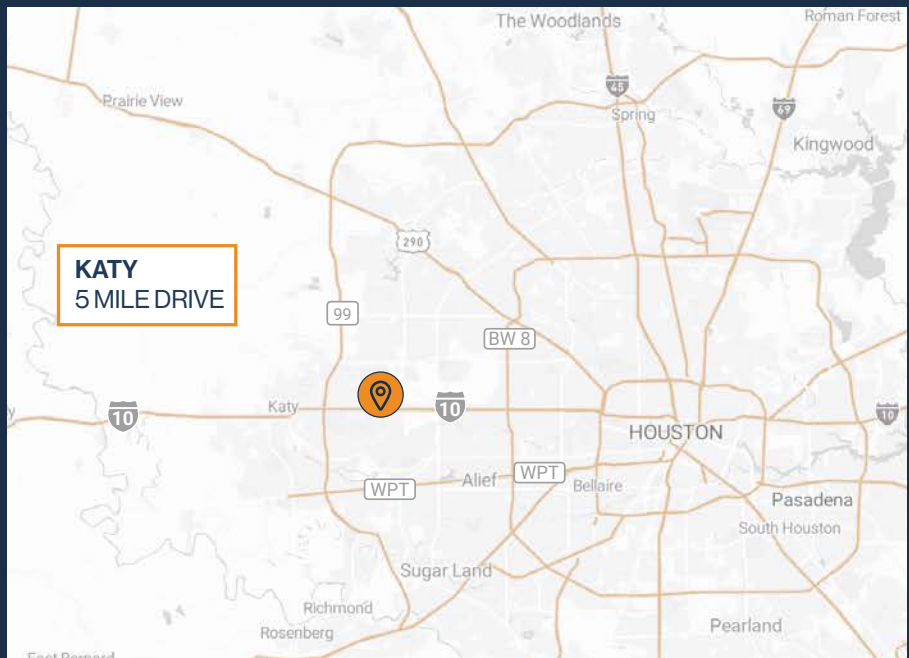
**10' X 10' GRADE-LEVEL  
LOADING**



**GLASS STOREFRONT &  
SHOWROOM-READY SPACES**



**1,000 SF - 4,000 SF  
SUITES AVAILABLE**



**RYAN YOUNG**

281.584.3320

RYAN.YOUNG@FORT-COMPANIES.COM

**THOMAS PFEIFER**

281.504.7460

THOMAS.PFEIFER@FORT-COMPANIES.COM





## SITE PLAN



**RYAN YOUNG**

281.584.3320

RYAN.YOUNG@FORT-COMPANIES.COM

**THOMAS PFEIFER**

281.504.7460

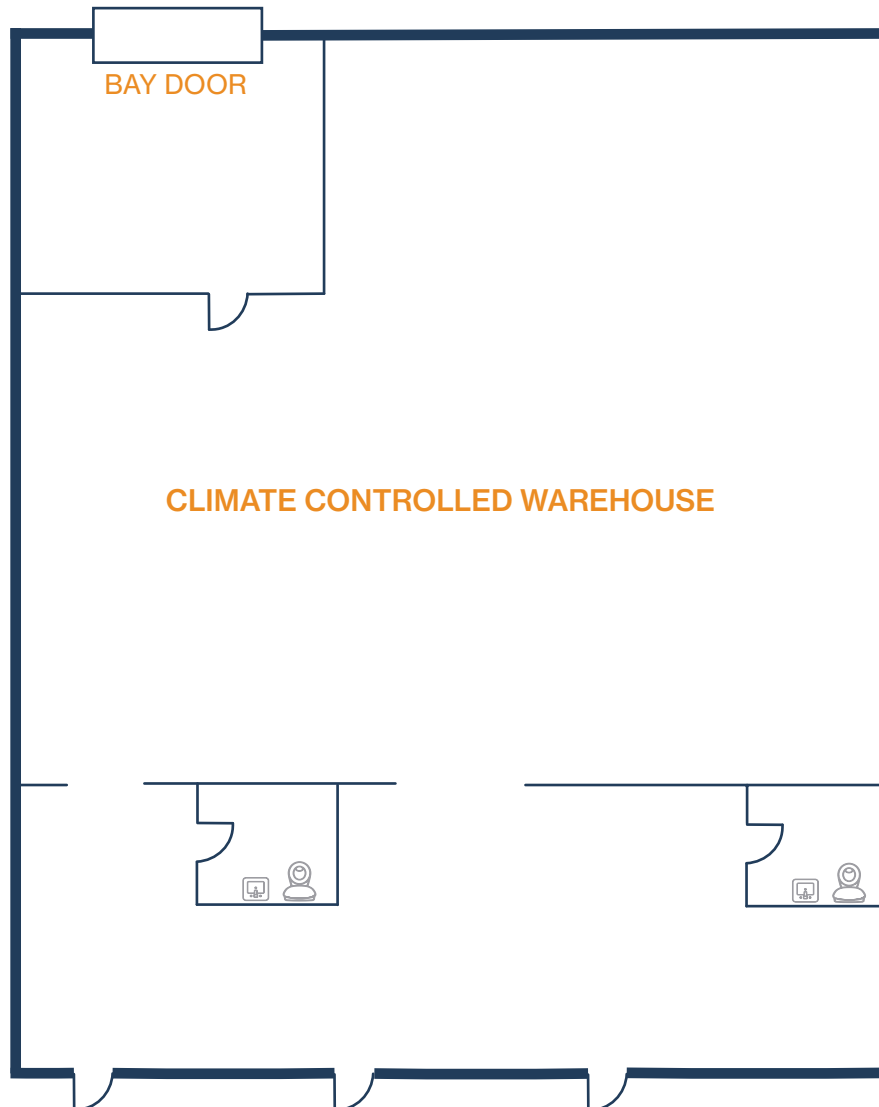
THOMAS.PFEIFER@FORT-COMPANIES.COM

This information is deemed reliable, however, Fort makes no guarantee, warranties, or representations as to the completeness or accuracy thereof.



## FLOOR PLAN — AVAILABLE IMMEDIATELY

- » 3,000 SF Total Available
- » Glass Storefront
- » (1) Grade Level Door
- » 100% Climate Controlled



**RYAN YOUNG**

281.584.3320

RYAN.YOUNG@FORT-COMPANIES.COM

**THOMAS PFEIFER**

281.504.7460

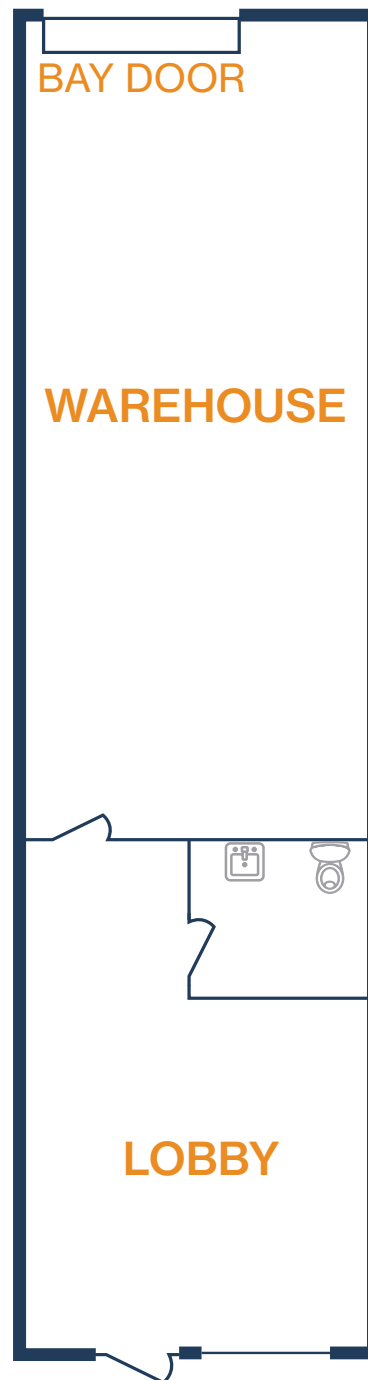
THOMAS.PFEIFER@FORT-COMPANIES.COM

This information is deemed reliable, however, Fort makes no guarantee, warranties, or representations as to the completeness or accuracy thereof.



## FLOOR PLAN — AVAILABLE IMMEDIATELY

- » 1,000 SF Total Available
- » Glass Storefront
- » (1) 10x10 Grade Level Door
- » 100% Climate Controlled



**RYAN YOUNG**

281.584.3320

RYAN.YOUNG@FORT-COMPANIES.COM

**THOMAS PFEIFER**

281.504.7460

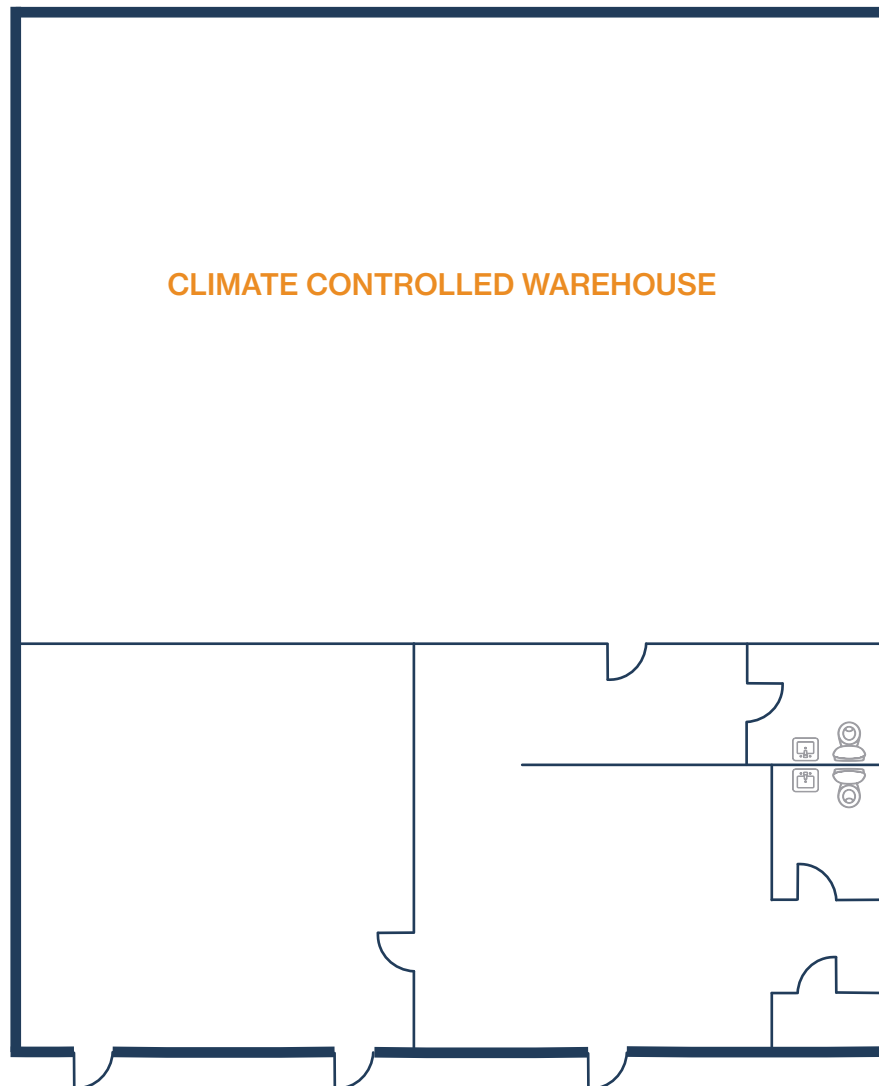
THOMAS.PFEIFER@FORT-COMPANIES.COM

This information is deemed reliable, however, Fort makes no guarantee, warranties, or representations as to the completeness or accuracy thereof.



## FLOOR PLAN — AVAILABLE IMMEDIATELY

- » 3,000 SF Total Available
- » Glass Storefront
- » (1) Grade Level Door
- » 100% Climate Controlled



**RYAN YOUNG**

281.584.3320

RYAN.YOUNG@FORT-COMPANIES.COM

**THOMAS PFEIFER**

281.504.7460

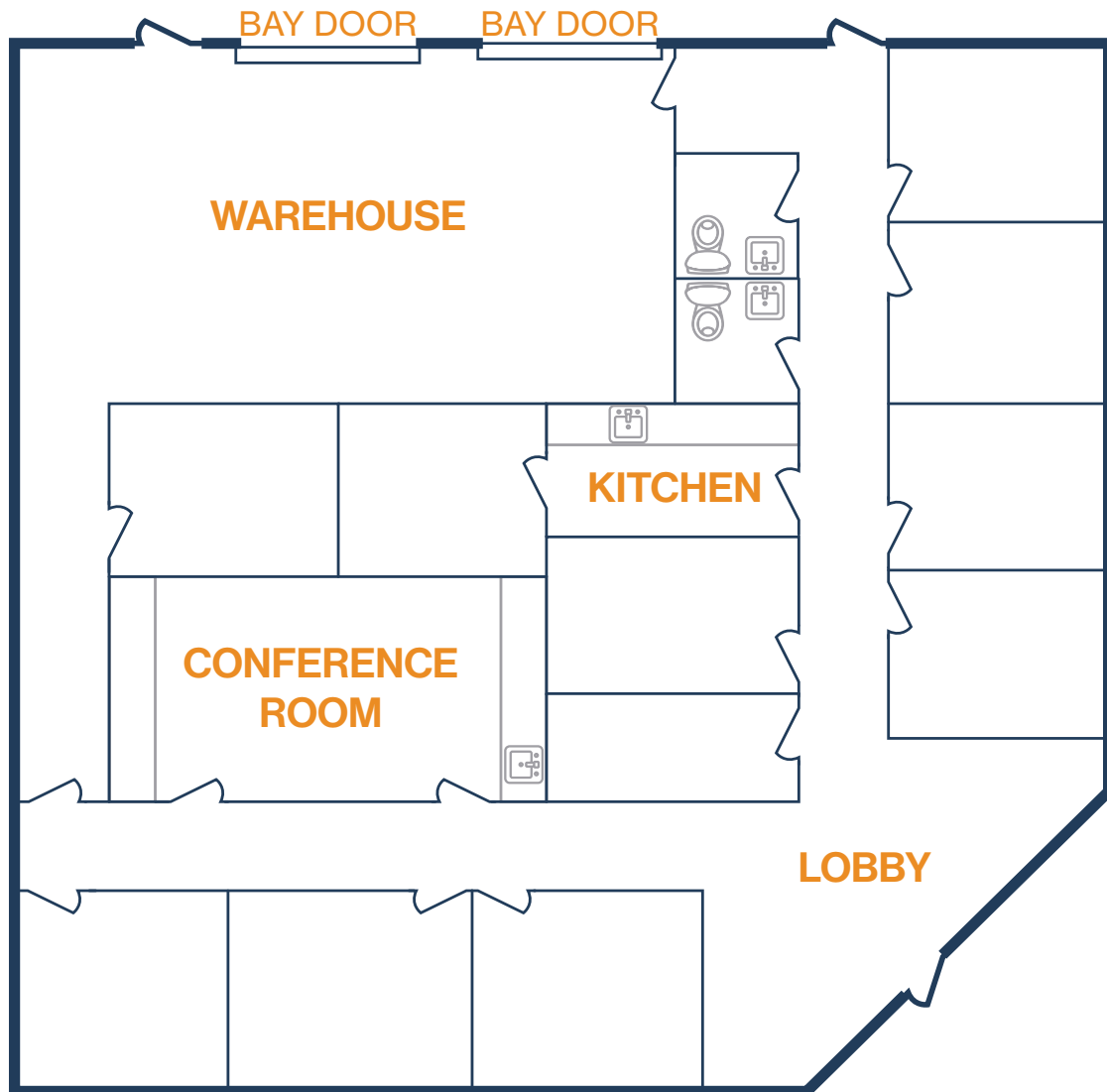
THOMAS.PFEIFER@FORT-COMPANIES.COM

This information is deemed reliable, however, Fort makes no guarantee, warranties, or representations as to the completeness or accuracy thereof.



## FLOOR PLAN — AVAILABLE IMMEDIATELY

- » 4,000 SF Total Available
- » 3,070 SF Office
- » 930 SF Warehouse
- » Glass Storefront
- » (2) 10' x 10' Grade Level Doors
- » (11) Offices
- » (1) Conference Room
- » (1) Kitchen/Break Room



**RYAN YOUNG**

281.584.3320

RYAN.YOUNG@FORT-COMPANIES.COM

**THOMAS PFEIFER**

281.504.7460

THOMAS.PFEIFER@FORT-COMPANIES.COM

This information is deemed reliable, however, Fort makes no guarantee, warranties, or representations as to the completeness or accuracy thereof.