

# THEALL BUSINESS PARK

6723 – 6825 THEALL ROAD, HOUSTON, TX 77066



**WILLOWBROOK/CYPRESS  
SUBMARKET**



**GREAT ACCESS TO TOMBALL  
PKY AND BELTWAY 8**



**18' CLEAR HEIGHT**



**CLIMATE-CONTROLLED  
WAREHOUSE**



**14' X 14' GRADE-LEVEL  
LOADING**



**3 PHASE POWER (240V)**

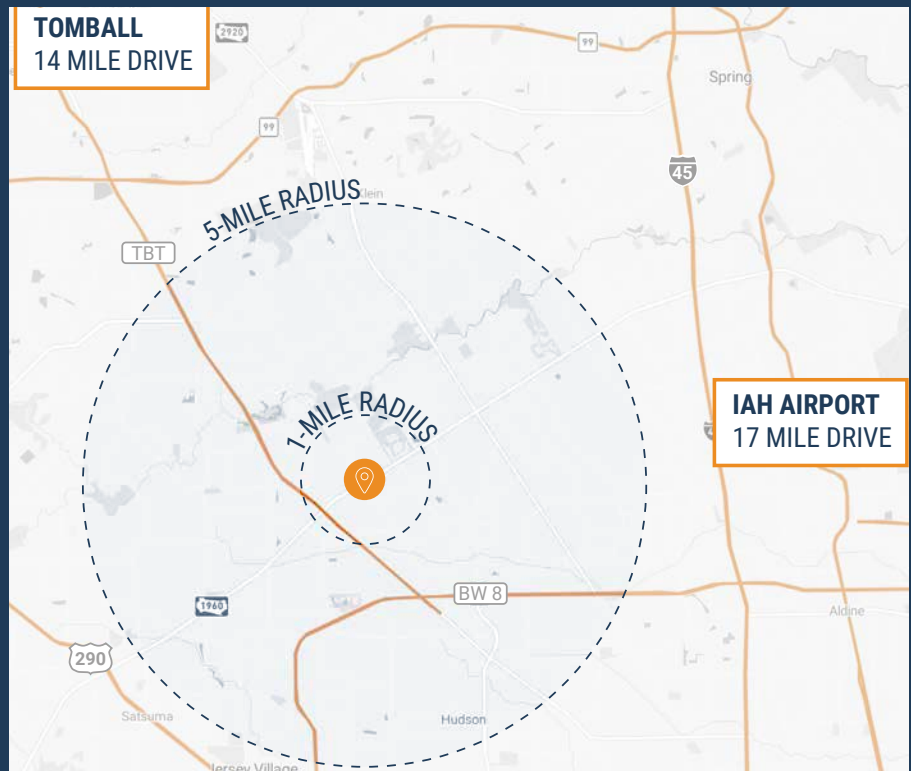


**FENCED & GATED**



**2,250 SF – 50,000 SF  
SUITES AVAILABLE**

**TOMBALL  
14 MILE DRIVE**



**IAH AIRPORT  
17 MILE DRIVE**

**RYAN YOUNG**



281.584.3320



RYAN.YOUNG@FORT-COMPANIES.COM

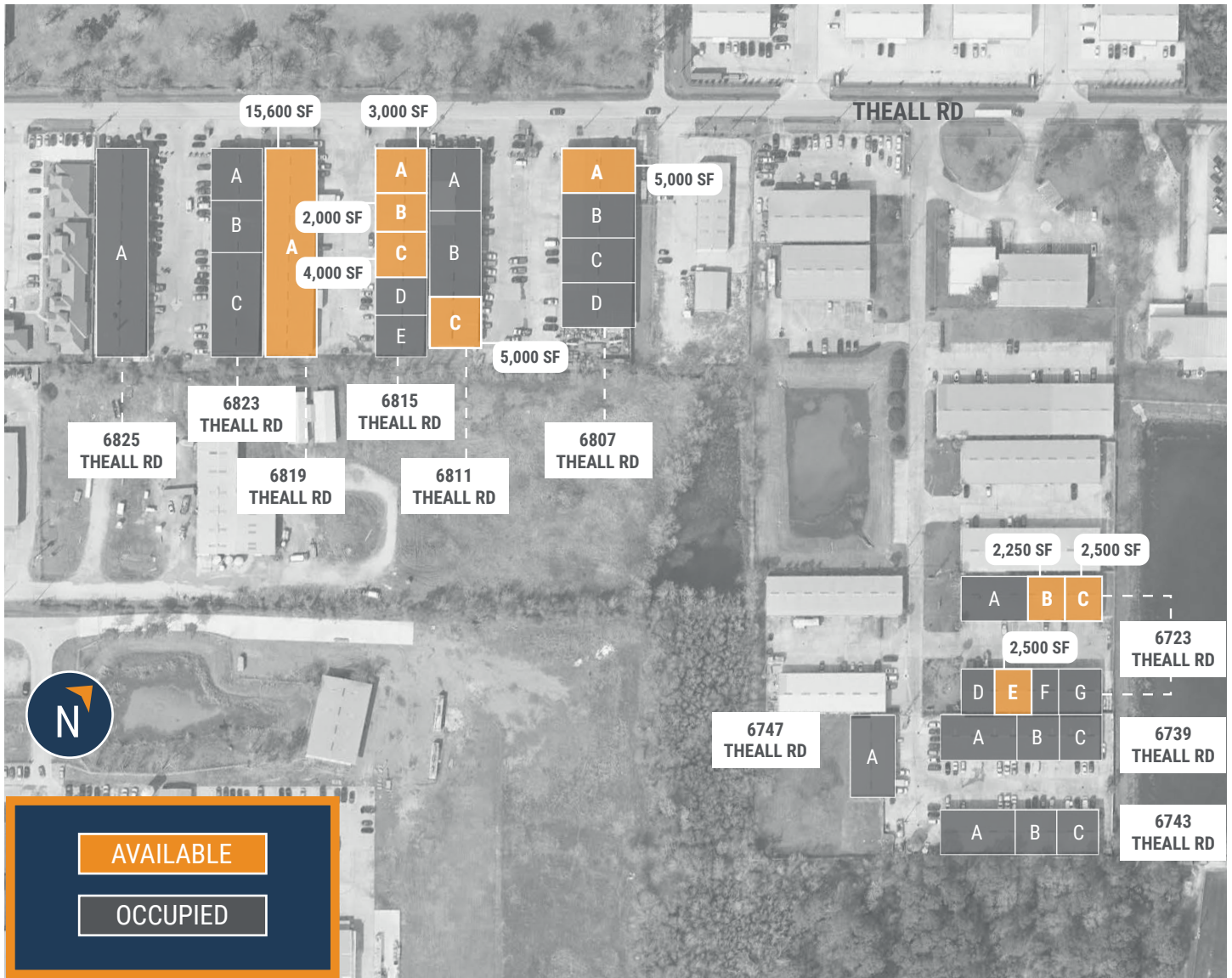


FORT CAPITAL

*This information is deemed reliable, however, Fort Capital makes no guarantee, warranties, or representations as to the completeness or accuracy thereof.*



SITE PLAN



**RYAN YOUNG**



281.584.3320

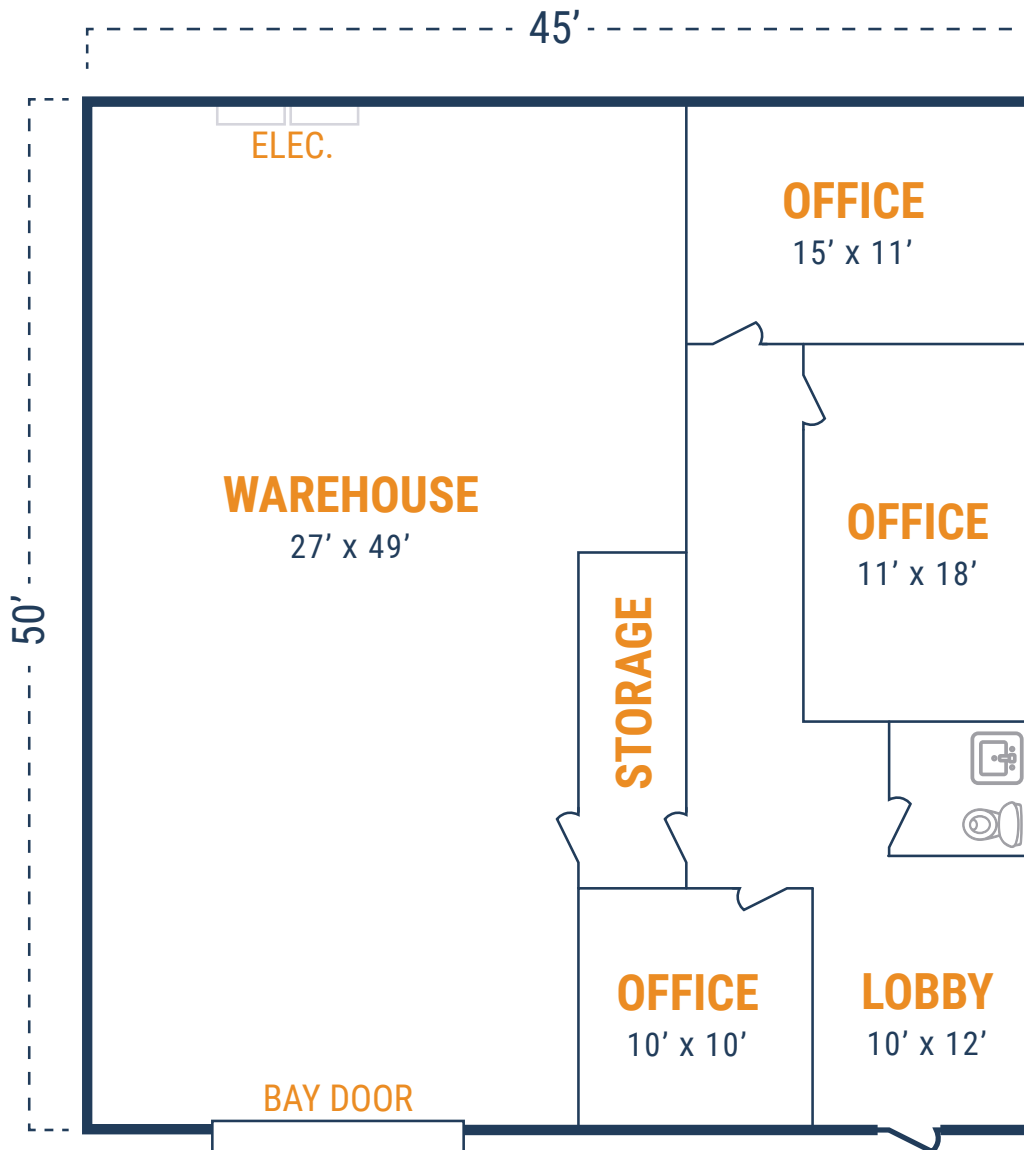


RYAN.YOUNG@FORT-COMPANIES.COM



## FLOOR PLAN – AVAILABLE IMMEDIATELY

- » 2,250 SF Total Available
- » 18' Clear Height
- » Fenced and Gated
- » 1,360 SF Warehouse
- » Fully Insulated Warehouse
- » (1) 12'x14' Grade-Level Door
- » 890 SF Office
- » 3 Phase Power (240 V)



**RYAN YOUNG**



281.584.3320



RYAN.YOUNG@FORT-COMPANIES.COM