

WESTBELT PLAZA

1450 W SAM HOUSTON PKY N, 10694 & 10696 HADDINGTON DR,
HOUSTON, TX 77025



**NORTHWEST OUTER LOOP
SUBMARKET**



**GREAT ACCESS TO BELTWAY 8
AND I-10**



14' CLEAR HEIGHT



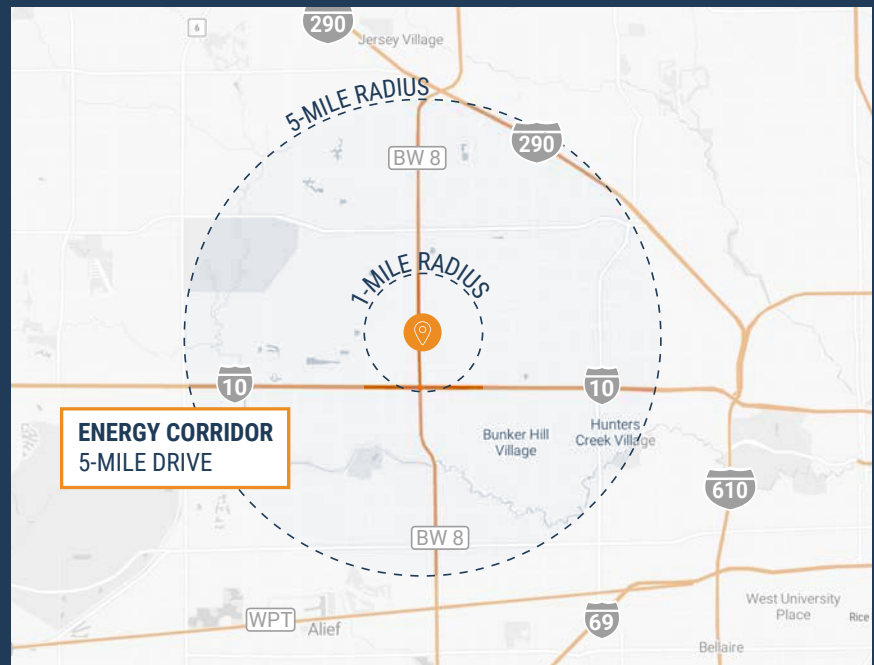
3 PHASE POWER



**GRADE-LEVEL AND
SEMI-DOCK LOADING**



**2,002 SF - 5,449 SF
SUITES AVAILABLE**



THOMAS PFEIFER



281.504.7460



THOMAS.PFEIFER@FORT-COMPANIES.COM



FORT CAPITAL

This information is deemed reliable, however, Fort Capital makes no guarantee, warranties, or representations as to the completeness or accuracy thereof.

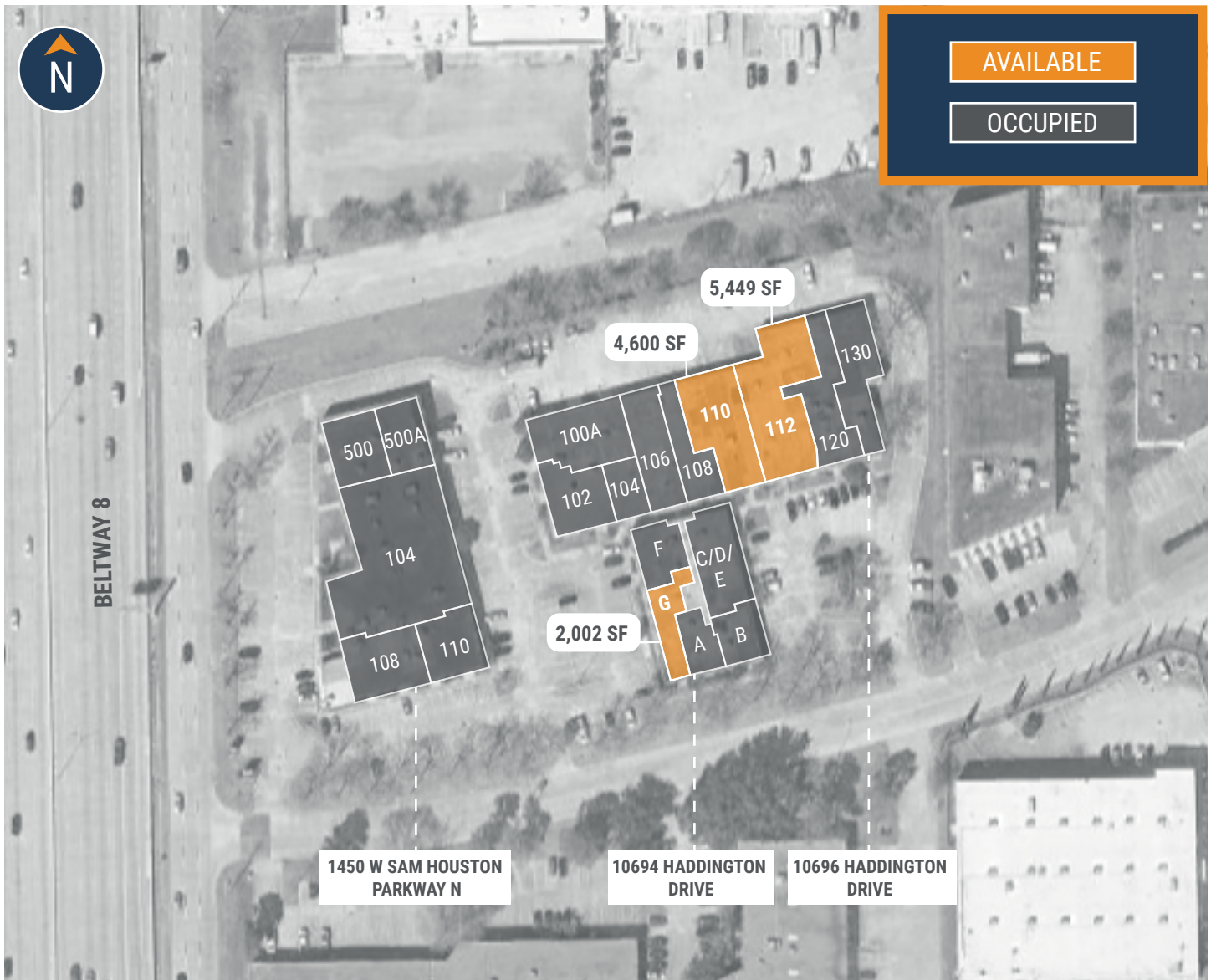


FORT CAPITAL

WESTBELT PLAZA

1450 W Sam Houston Pky N, 10694 & 10696 Haddington Dr,
Houston, TX 77025

SITE PLAN



THOMAS PFEIFER



281.504.7460



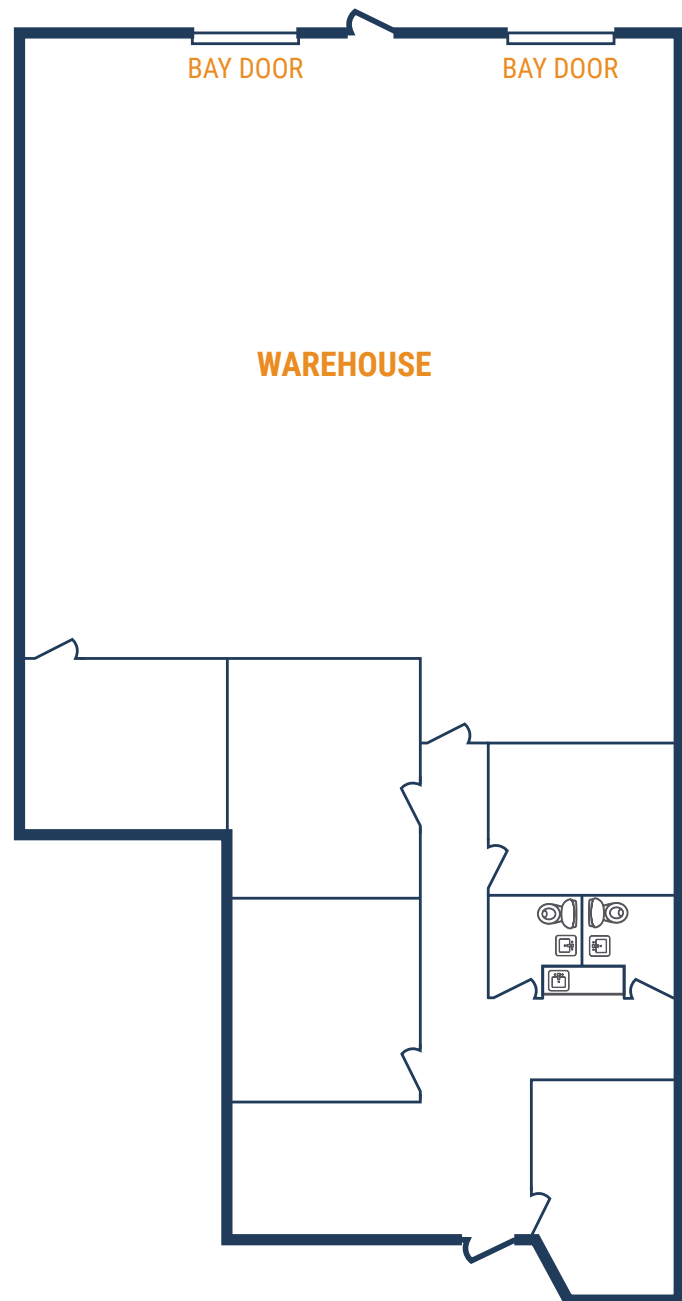
THOMAS.PFEIFER@FORT-COMPANIES.COM

This information is deemed reliable, however, Fort Capital makes no guarantee, warranties, or representations as to the completeness or accuracy thereof.



FLOOR PLAN – AVAILABLE IMMEDIATELY

- » 4,600 SF Total Available
- » 2,070 SF Office
- » 2,530 SF Warehouse
- » (2) 10' x 12' Grade Level Doors
- » HVAC Warehouse



THOMAS PFEIFER



281.504.7460

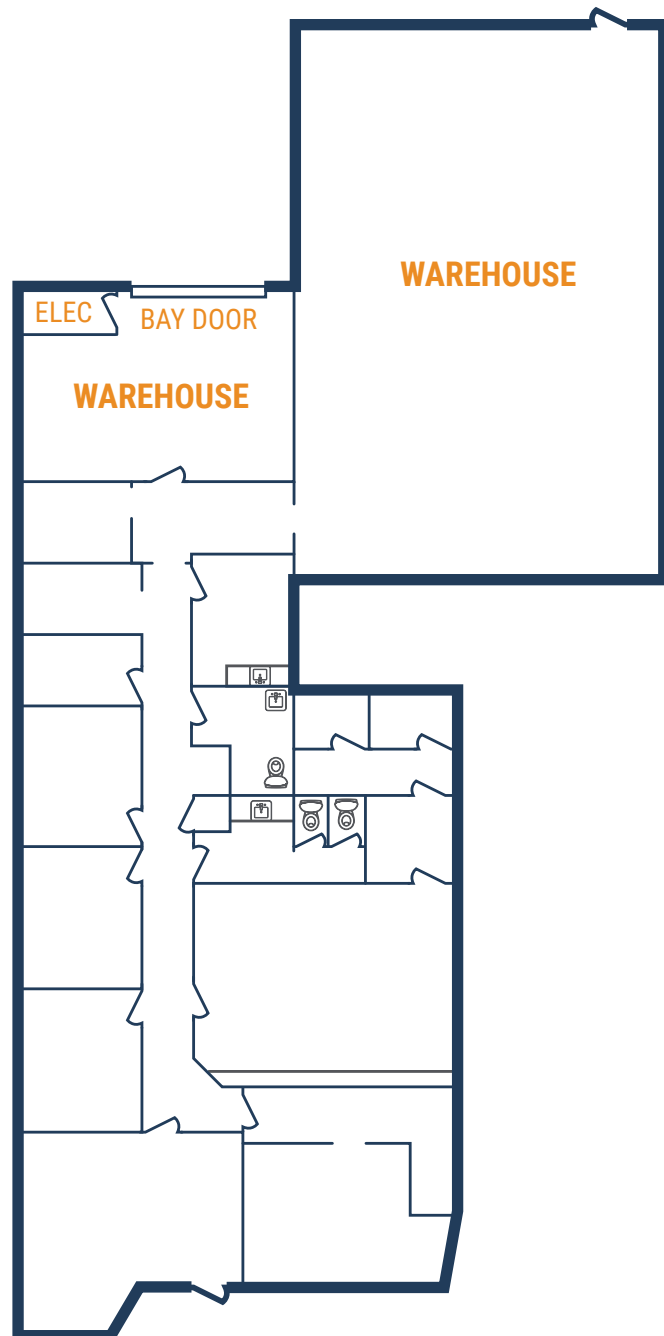


THOMAS.PFEIFER@FORT-COMPANIES.COM



FLOOR PLAN – AVAILABLE IMMEDIATELY

- » 5,449 SF Total Available
- » 3,573 SF Office
- » 1,876 SF Warehouse
- » (1) 10' x 12' Grade Level Door



THOMAS PFEIFER



281.504.7460



THOMAS.PFEIFER@FORT-COMPANIES.COM



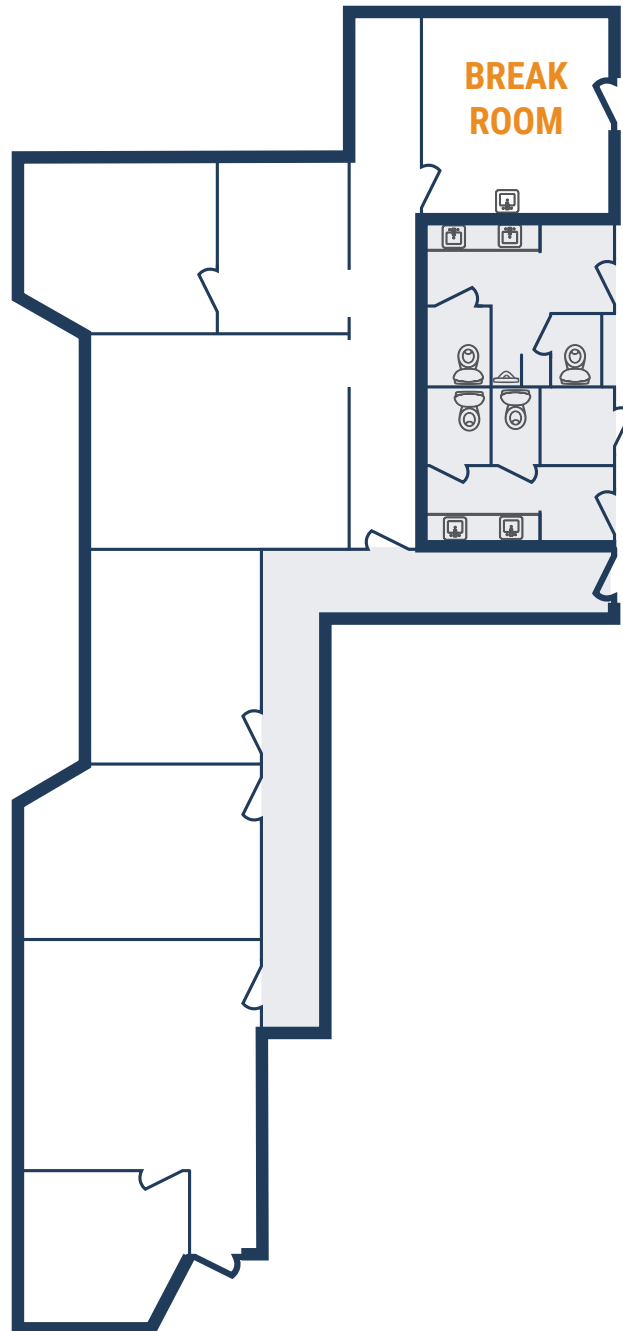
FORT CAPITAL

WESTBELT PLAZA

10694 Haddington Dr, G
Houston, TX 77025

FLOOR PLAN – AVAILABLE IMMEDIATELY

- » 2,002 SF Total Available
 - » 100% Office
- » Shared Bathroom
- » Dedicated Break Room



THOMAS PFEIFER



281.504.7460



THOMAS.PFEIFER@FORT-COMPANIES.COM

This information is deemed reliable, however, Fort Capital makes no guarantee, warranties, or representations as to the completeness or accuracy thereof.