

TOLL PLAZA BUSINESS PARK

6125 W SAM HOUSTON PKWY N, HOUSTON, TX 77041



**NORTHWEST INNERLOOP
SUBMARKET**



**GREAT ACCESS TO BELTWAY 8
AND US-290**



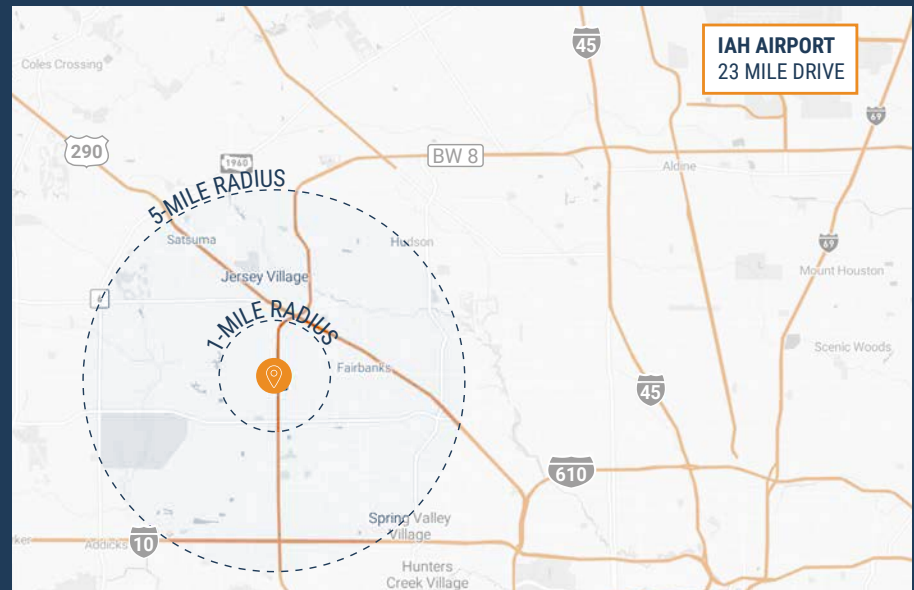
24' CLEAR HEIGHT



**OVERSIZED 12' X 14'
GRADE-LEVEL DOORS**



**3,000 SF - 6,780 SF
SUITES AVAILABLE**



RYAN YOUNG



281.584.3320



RYAN.YOUNG@FORT-COMPANIES.COM



FORT CAPITAL

This information is deemed reliable, however, Fort Capital makes no guarantee, warranties, or representations as to the completeness or accuracy thereof.



FORT CAPITAL

TOLL PLAZA BUSINESS PARK

6125 W Sam Houston Pkwy
Houston, TX 77041

SITE PLAN



RYAN YOUNG



281.584.3320



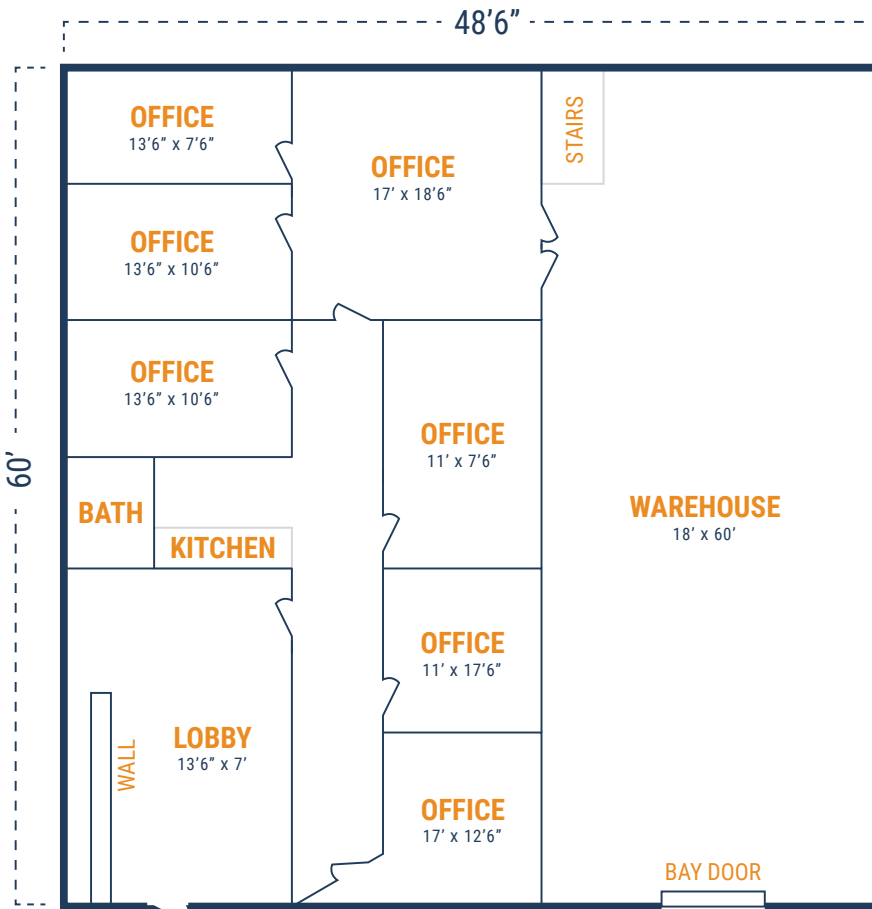
RYAN.YOUNG@FORT-COMPANIES.COM

This information is deemed reliable, however, Fort Capital makes no guarantee, warranties, or representations as to the completeness or accuracy thereof.

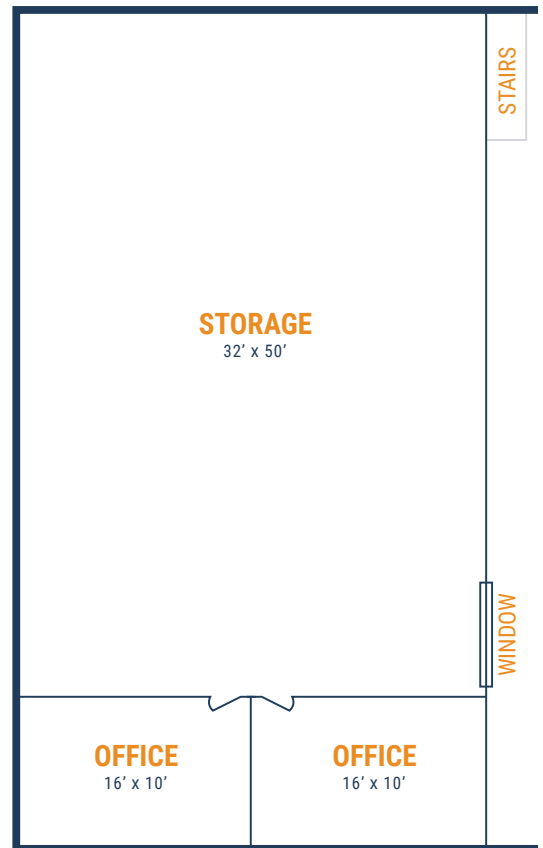


FLOOR PLAN – AVAILABLE IMMEDIATELY

- » 3,000 SF Total Available
- » 1,920 SF Office
- » 1,080 SF Warehouse
- » 1,920 SF Upstairs Storage
- » (1) 12' x 14' Grade Level Door



UPSTAIRS:



**All SF labels are approximations

RYAN YOUNG



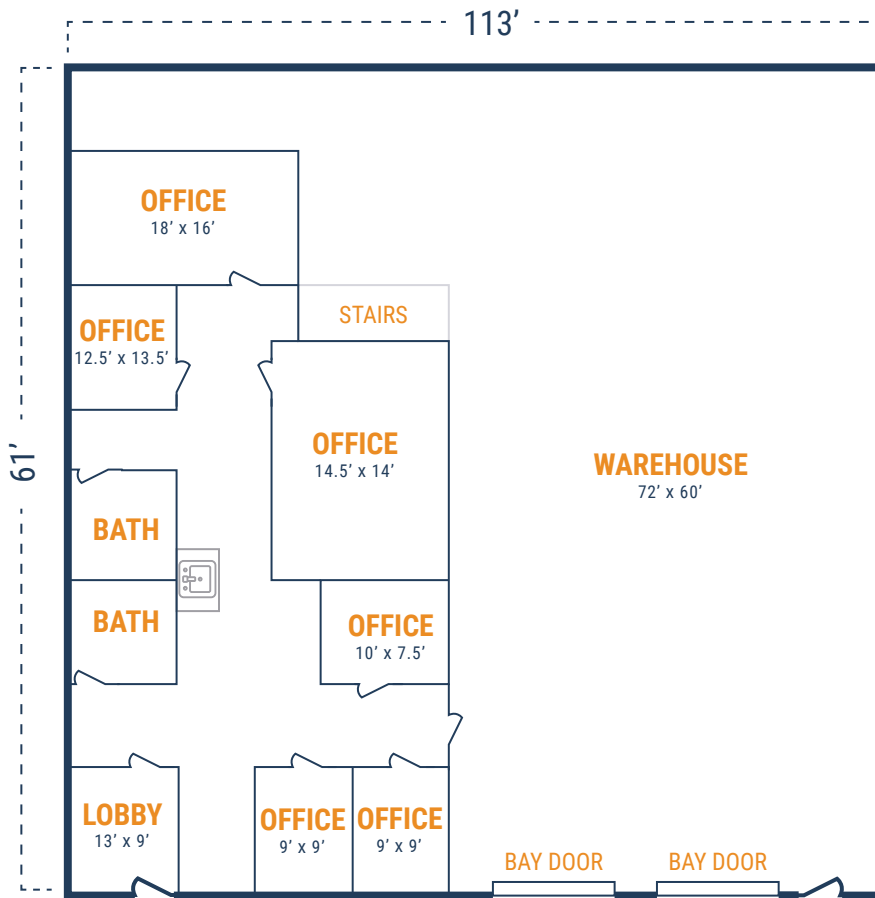
281.584.3320



RYAN.YOUNG@FORT-COMPANIES.COM

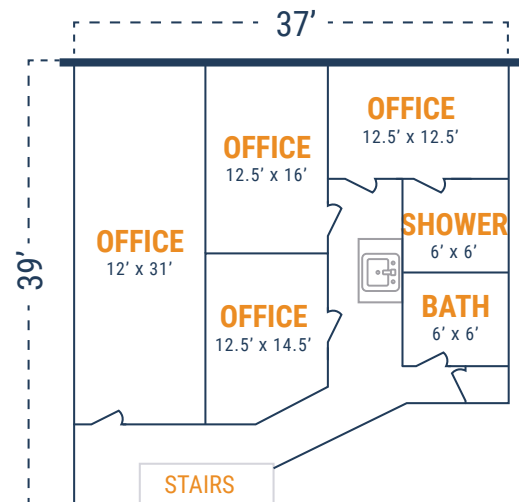
FLOOR PLAN – AVAILABLE IMMEDIATELY

- » 6,780 SF Total Available
- » 2,202 SF Downstairs Office
- » 1,618 SF Upstairs Office
- » 4,578 SF Warehouse
- » (2) 12' x 14' Grade Level Doors



**All SF labels are approximations

UPSTAIRS:



RYAN YOUNG



281.584.3320



RYAN.YOUNG@FORT-COMPANIES.COM