

# HEMPSTEAD INDUSTRIAL PARK

10612 – 10616 HEMPSTEAD ROAD, HOUSTON, TX 77092



**NORTHWEST SUBMARKET**



**GREAT ACCESS TO I-610,  
US-290, AND HEMPSTEAD**



**20' CROWN HEIGHT**



**TENANT-CONTROLLED HVAC**



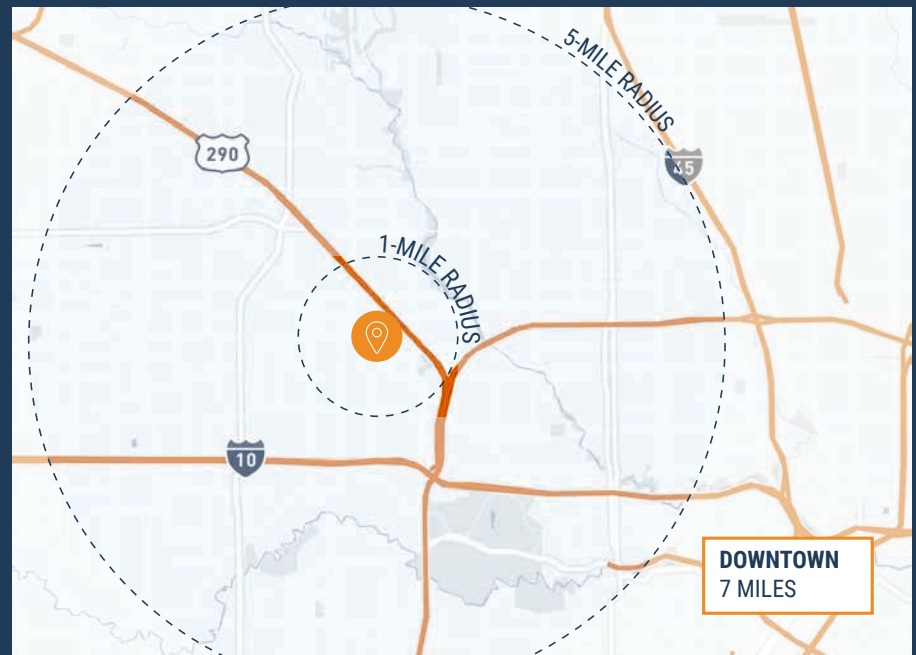
**GRADE-LEVEL LOADING**



**FENCED OUTSIDE STORAGE**



**3,800 SF – 10,000 SF  
SUITES AVAILABLE**



**THOMAS PFEIFER**



281.504.7460



THOMAS.PFEIFER@FORT-COMPANIES.COM



FORT CAPITAL

*This information is deemed reliable, however, Fort Capital makes no guarantee, warranties, or representations as to the completeness or accuracy thereof.*



FORT CAPITAL

# HEMPSTEAD INDUSTRIAL PARK

10612 – 10616 Hempstead Rd  
Houston, TX 77092

## SITE PLAN



# THOMAS PFEIFER



281.504.7460



THOMAS.PFEIFER@FORT-COMPANIES.COM

*This information is deemed reliable, however, Fort Capital makes no guarantee, warranties, or representations as to the completeness or accuracy thereof.*



FORT CAPITAL

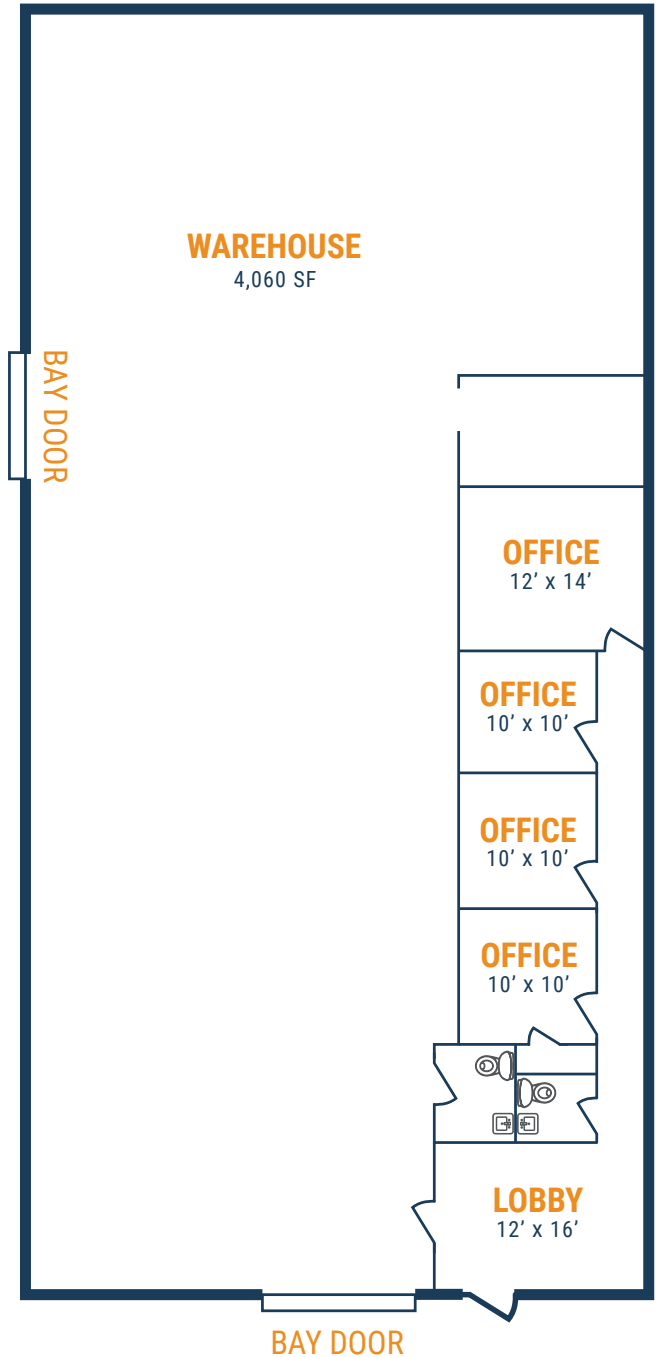
# HEMPSTEAD INDUSTRIAL PARK

10612 Hempstead Rd, Suite 10612-D

Houston, TX 77092

## FLOOR PLAN – AVAILABLE IMMEDIATELY

- » 5,000 SF Total Available
- » 940 SF Office
- » 4,060 SF Warehouse
- » (2) Grade Level Doors



\*\*All SF labels are approximations

**THOMAS PFEIFER**



281.504.7460



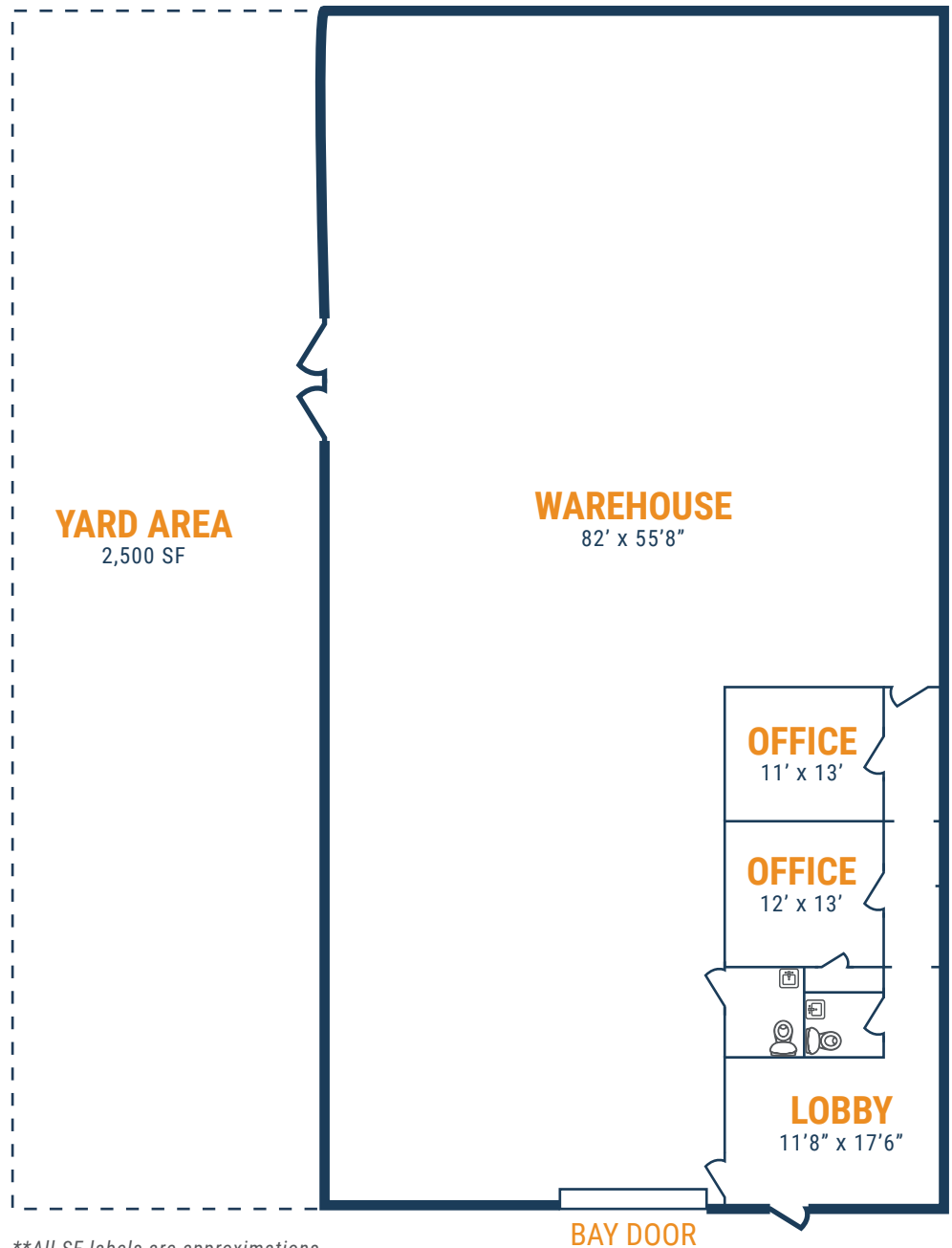
THOMAS.PFEIFER@FORT-COMPANIES.COM

*This information is deemed reliable, however, Fort Capital makes no guarantee, warranties, or representations as to the completeness or accuracy thereof.*



## FLOOR PLAN – AVAILABLE FEBRUARY 2024

- » 5,000 SF Total Available
  - » 800 SF Office
  - » 4,200 SF Warehouse
- » (1) Grade Level Door
- » 2,500 SF Fenced Yard\*\*



**THOMAS PFEIFER**



281.504.7460

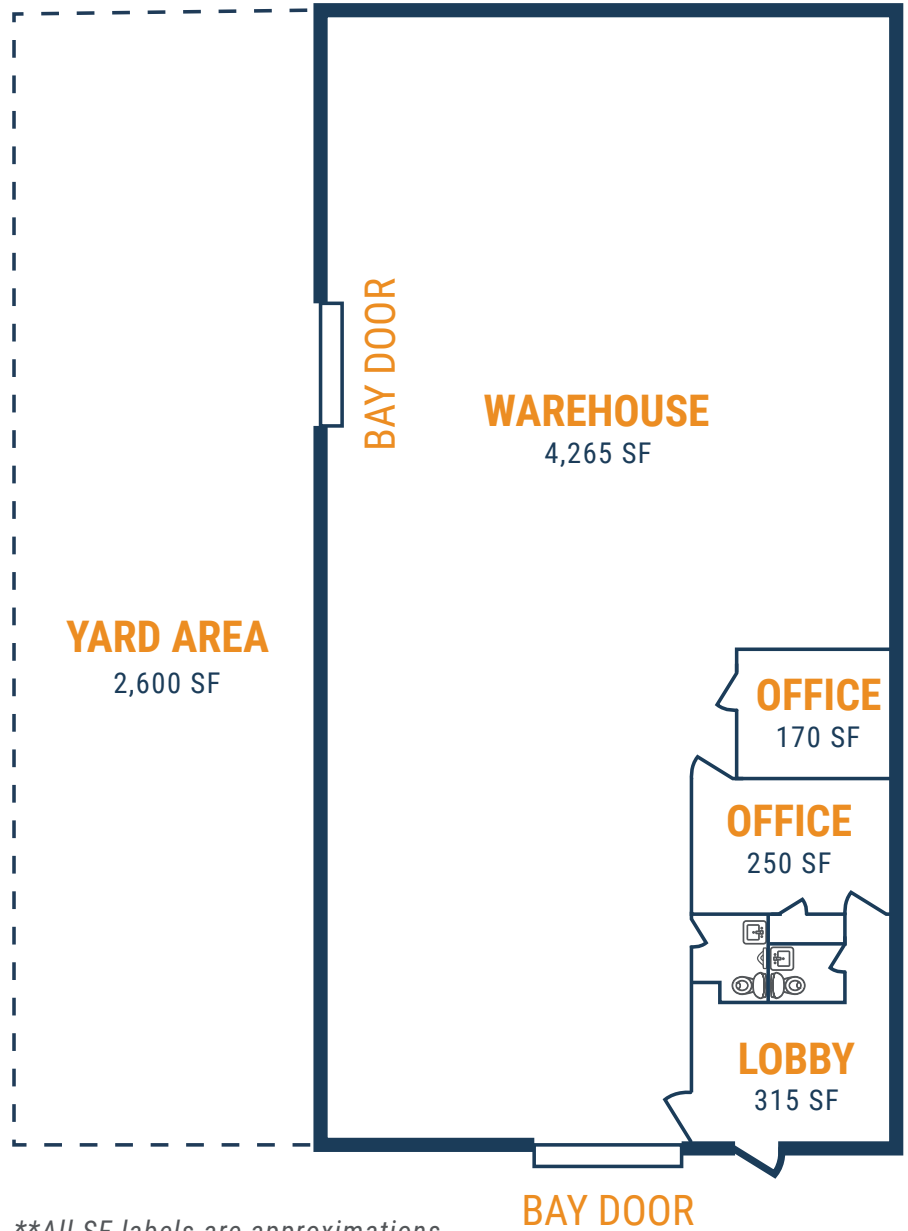


THOMAS.PFEIFER@FORT-COMPANIES.COM



## FLOOR PLAN – AVAILABLE IMMEDIATELY

- » 5,000 SF Total Available
  - » 735 SF Office
  - » 4,265 SF Warehouse
- » (2) Grade Level Doors
- » 2,600 SF Fenced Yard\*\*



\*\*All SF labels are approximations

THOMAS PFEIFER



281.504.7460

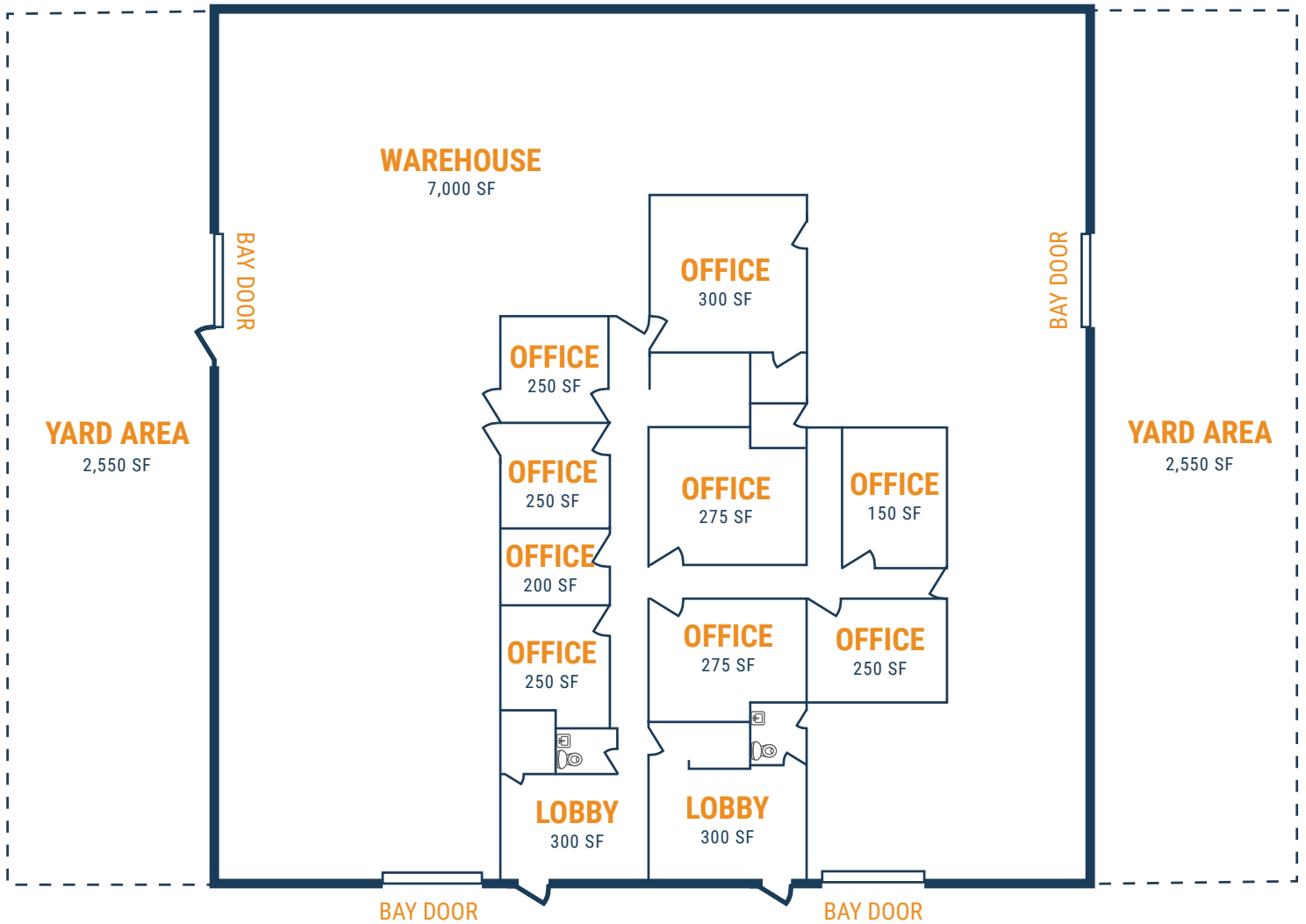


THOMAS.PFEIFER@FORT-COMPANIES.COM



## FLOOR PLAN – AVAILABLE IMMEDIATELY

- » 10,000 SF Total Available
- » 3,000 SF Office
- » 7,000 SF Warehouse
- » (4) Grade Level Doors
- » (2) 2,550 SF Fenced Yards



\*\*All SF labels are approximations

THOMAS PFEIFER



281.504.7460

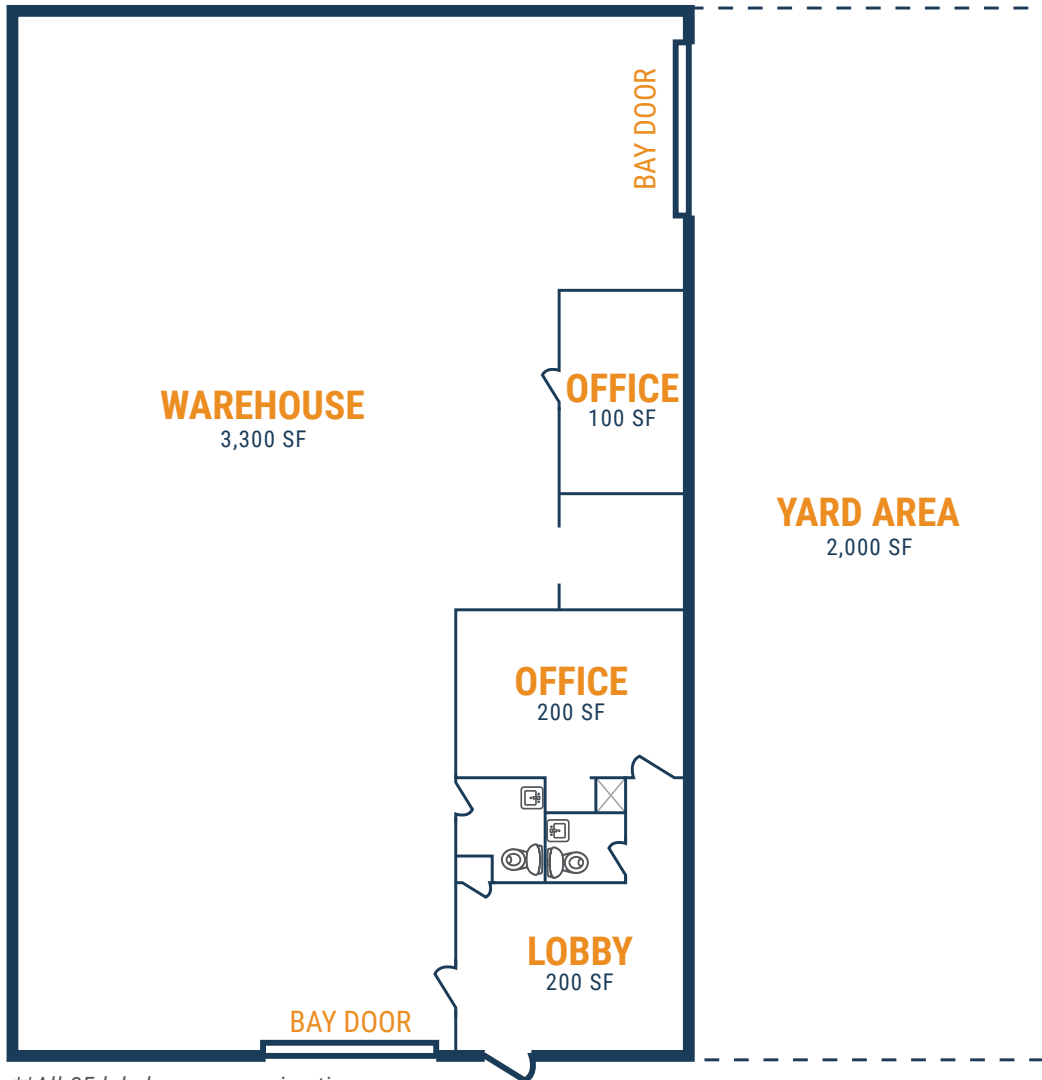


THOMAS.PFEIFER@FORT-COMPANIES.COM



## FLOOR PLAN – AVAILABLE IMMEDIATELY

- » 3,800 SF Total Available
- » 500 SF Office
- » 3,300 SF Warehouse
- » (2) Grade Level Doors
- » 2,000 SF Fenced Yard



\*\*All SF labels are approximations

THOMAS PFEIFER



281.504.7460



THOMAS.PFEIFER@FORT-COMPANIES.COM