

JULIE MARIE BUSINESS CENTER

21414 JULIE MARIE LANE, KATY, TX 77449



**WEST HOUSTON/
KATY SUBMARKET**



**GREAT ACCESS TO I-10
AND HWY-99**



AMPLE TENANT PARKING



TENANT-CONTROLLED HVAC



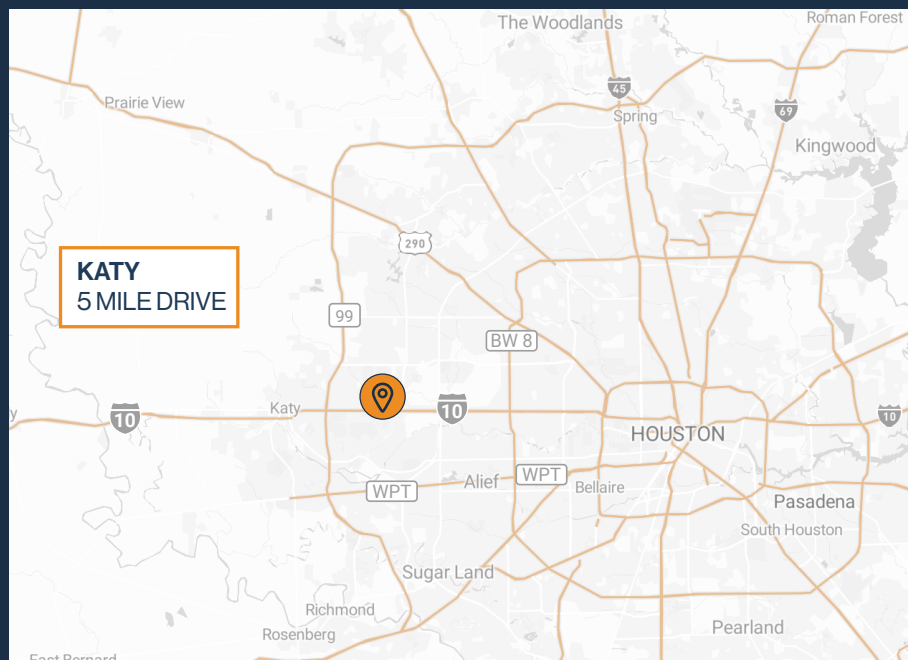
**10' X 10' GRADE-LEVEL
LOADING**



**GLASS STOREFRONT &
SHOWROOM-READY SPACES**



**1,000 SF – 3,420 SF
SUITES AVAILABLE**



RYAN YOUNG

281.584.3320

RYAN.YOUNG@FORT-COMPANIES.COM



FORT
LEASING

This information is deemed reliable, however, Fort makes no guarantee, warranties, or representations as to the completeness or accuracy thereof.

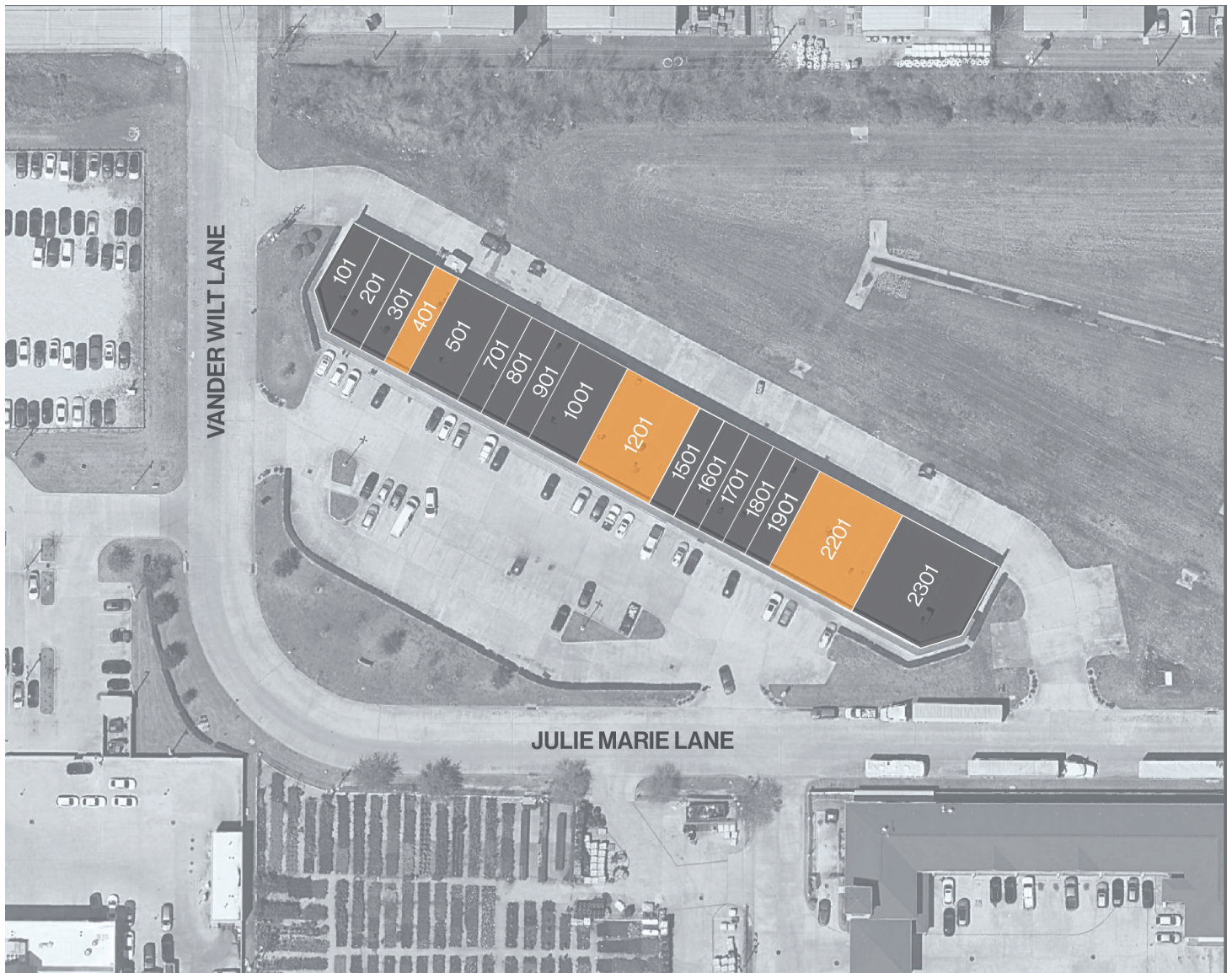


FORT
LEASING

JULIE MARIE BUSINESS CENTER

21414 JULIE MARIE LN
HOUSTON, TEXAS 77449

SITE PLAN



RYAN YOUNG
281.584.3320
ryan.young@fort-companies.com

This information is deemed reliable, however, Fort makes no guarantee, warranties, or representations as to the completeness or accuracy thereof.



FORT
LEASING

JULIE MARIE BUSINESS CENTER

21414 JULIE MARIE LN
HOUSTON, TEXAS 77449

UNIT 401 – 1,000 SF

- (1) Grade Level Door
- (1) Restroom
- 100% Climate-Controlled





FORT
LEASING

JULIE MARIE BUSINESS CENTER

21414 JULIE MARIE LN
HOUSTON, TEXAS 77449

UNIT 1201 – 1,000 SF

- Glass Storefront
- (1) Grade Level Door
- 100% Climate-Controlled





FORT
LEASING

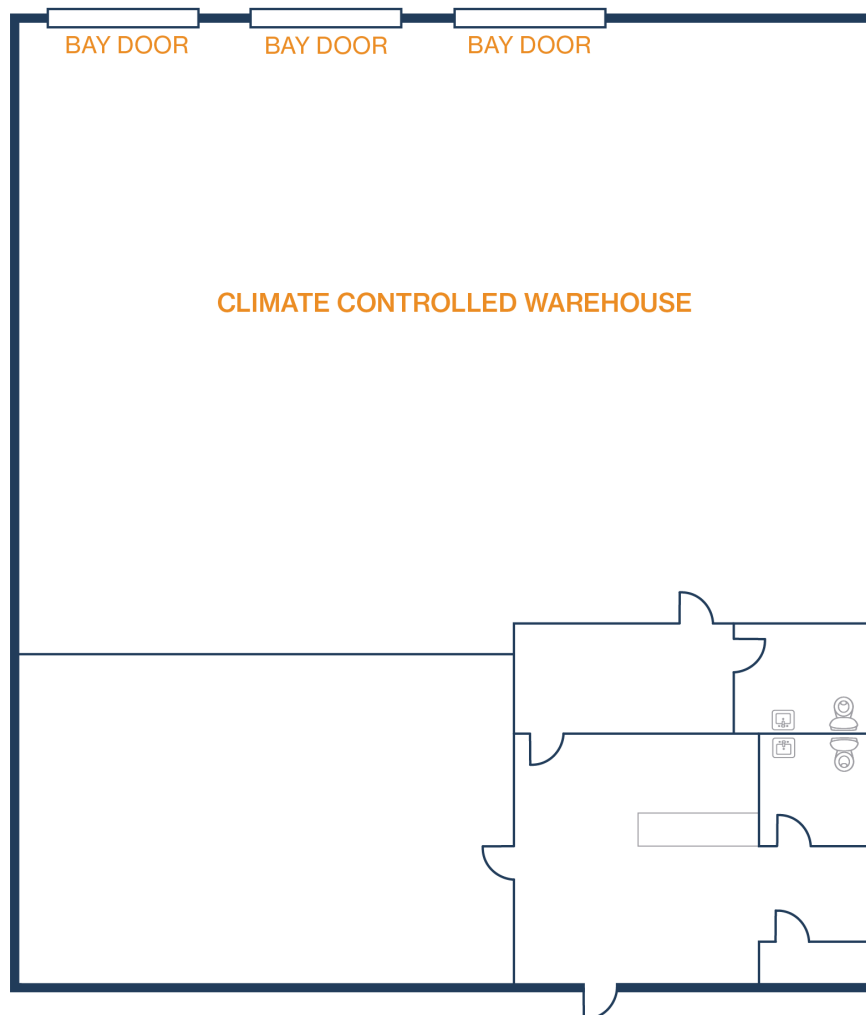
JULIE MARIE BUSINESS CENTER

21414 JULIE MARIE LN
HOUSTON, TEXAS 77449

UNIT 2201 – 3,420 SF

2,394 SF OFFICE / 1,026 SF WAREHOUSE

- Climate-Controlled Warehouse
- (3) Grade Level Doors
- (2) Restrooms



RYAN YOUNG
281.584.3320
ryan.young@fort-companies.com

This information is deemed reliable, however, Fort makes no guarantee, warranties, or representations as to the completeness or accuracy thereof.