

THEALL BUSINESS PARK

6723 – 6825 THEALL ROAD, HOUSTON, TX 77066



**WILLOWBROOK/CYPRESS
SUBMARKET**



**GREAT ACCESS TO TOM-
BALL PKY AND BELTWAY 8**



18' CLEAR HEIGHT



**CLIMATE-CONTROLLED
WAREHOUSE**



**OVERSIZED 12' X 14' GRADE
LEVEL LOADING**



3 PHASE POWER (240V)

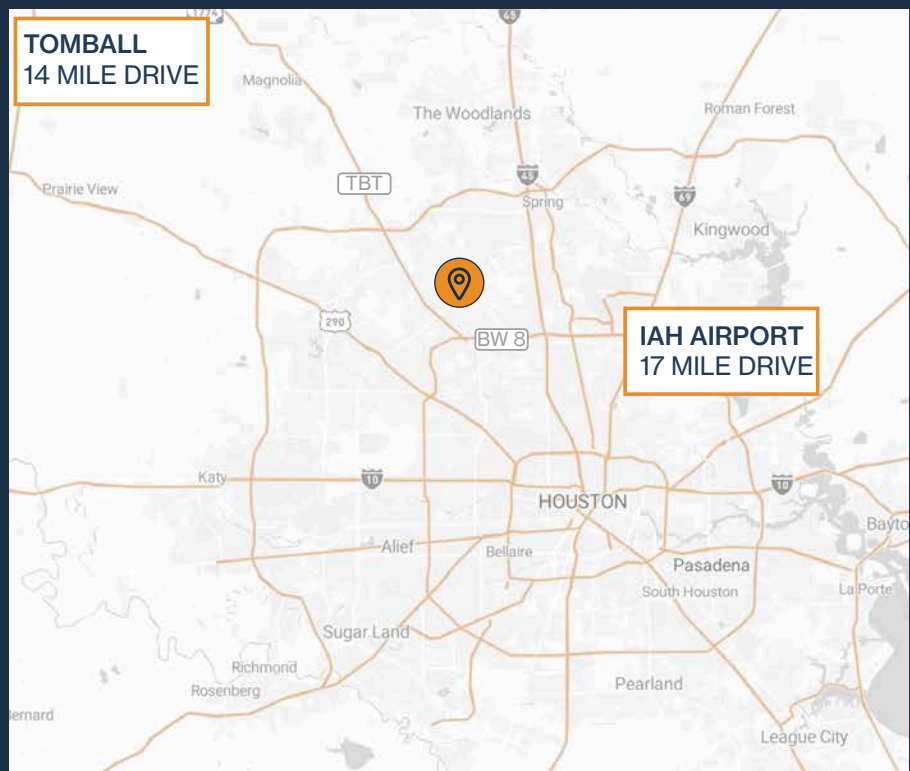


FENCED & GATED



**2,500 SF – 24,600 SF
SUITES AVAILABLE**

**TOMBALL
14 MILE DRIVE**



RYAN YOUNG



281.584.3320



RYAN.YOUNG@FORT-COMPANIES.COM



FORT
LEASING

This information is deemed reliable, however, Fort makes no guarantee, warranties, or representations as to the completeness or accuracy thereof.

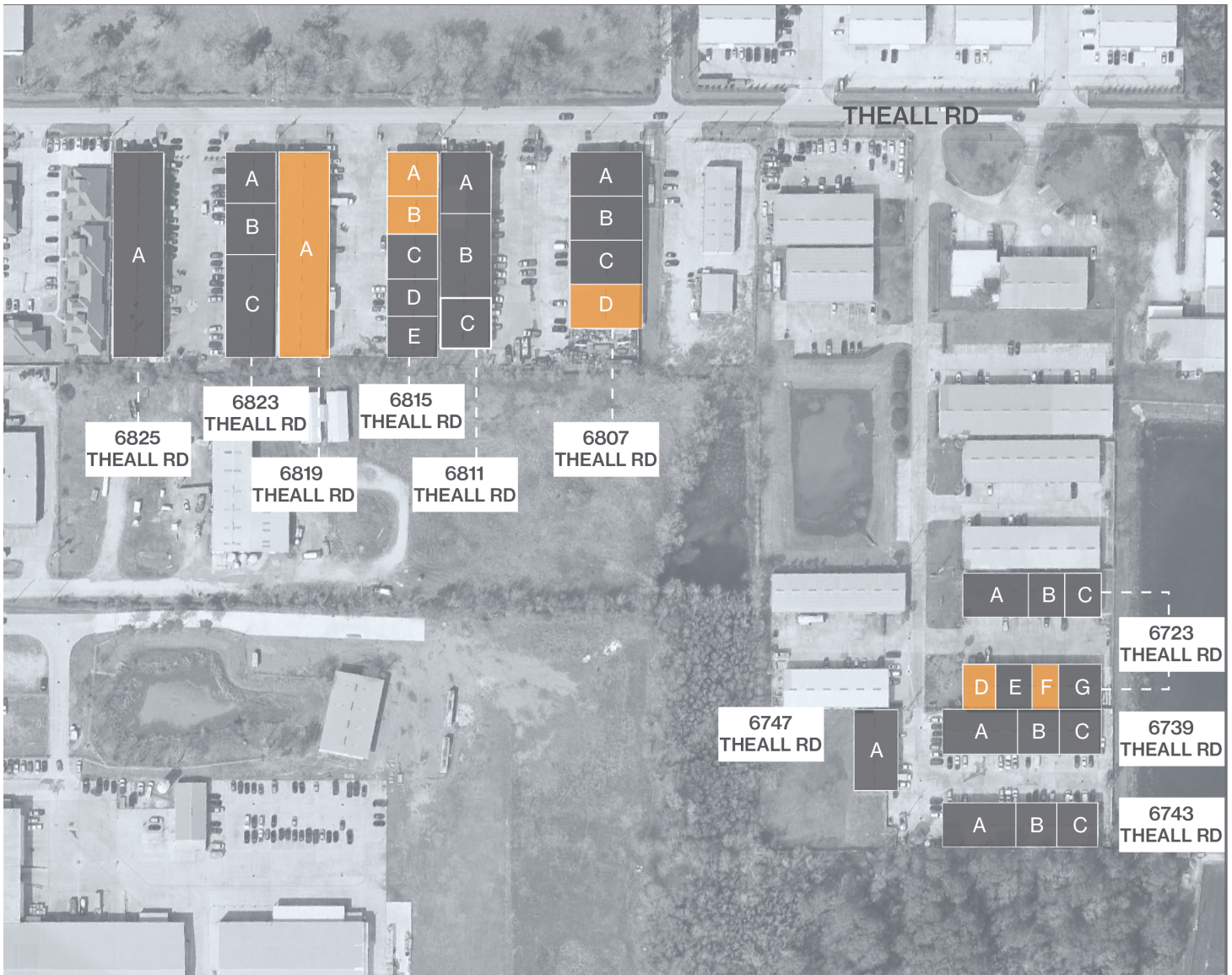


FORT
LEASING

THEALL BUSINESS PARK

6723-6825 THEALL RD
HOUSTON, TEXAS 77066

SITE PLAN



RYAN YOUNG
281.584.3320
ryan.young@fort-companies.com

This information is deemed reliable, however, Fort makes no guarantee, warranties, or representations as to the completeness or accuracy thereof.



FORT
LEASING

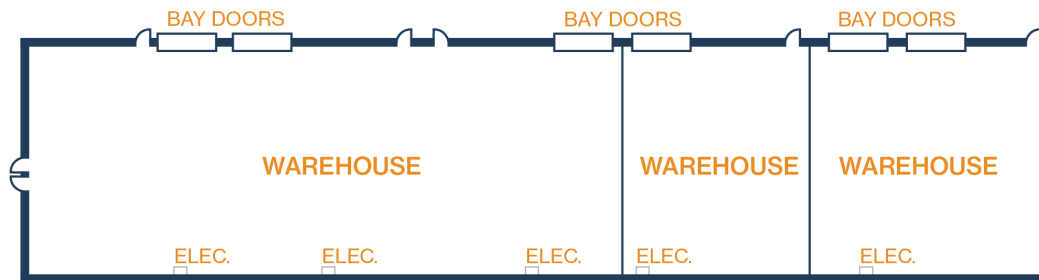
THEALL BUSINESS PARK

6723-6825 THEALL RD
HOUSTON, TEXAS 77066

UNIT 6819-A – 15,600 SF

0 SF OFFICE / 15,600 SF WAREHOUSE

- 18' Clear Height
- (6) 12' x 14' Grade Level Doors
- Fenced and Gated
- Fully Insulated Warehouse





FORT
LEASING

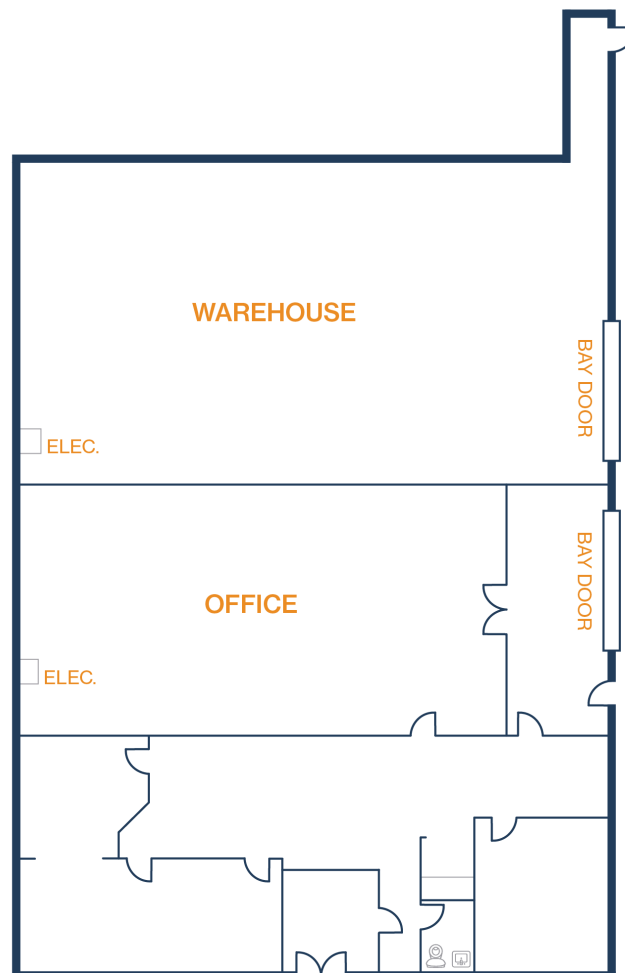
THEALL BUSINESS PARK

6723-6825 THEALL RD
HOUSTON, TEXAS 77066

UNIT 6815-A & B – 5,000 SF

990 SF OFFICE / 4,010 SF WAREHOUSE

- 18' Clear Height
- (2) 12' x 14' Grade Level Doors
- Fully Insulated Warehouse
- Fenced and Gated



RYAN YOUNG
281.584.3320
ryan.young@fort-companies.com

This information is deemed reliable, however, Fort makes no guarantee, warranties, or representations as to the completeness or accuracy thereof.



FORT
LEASING

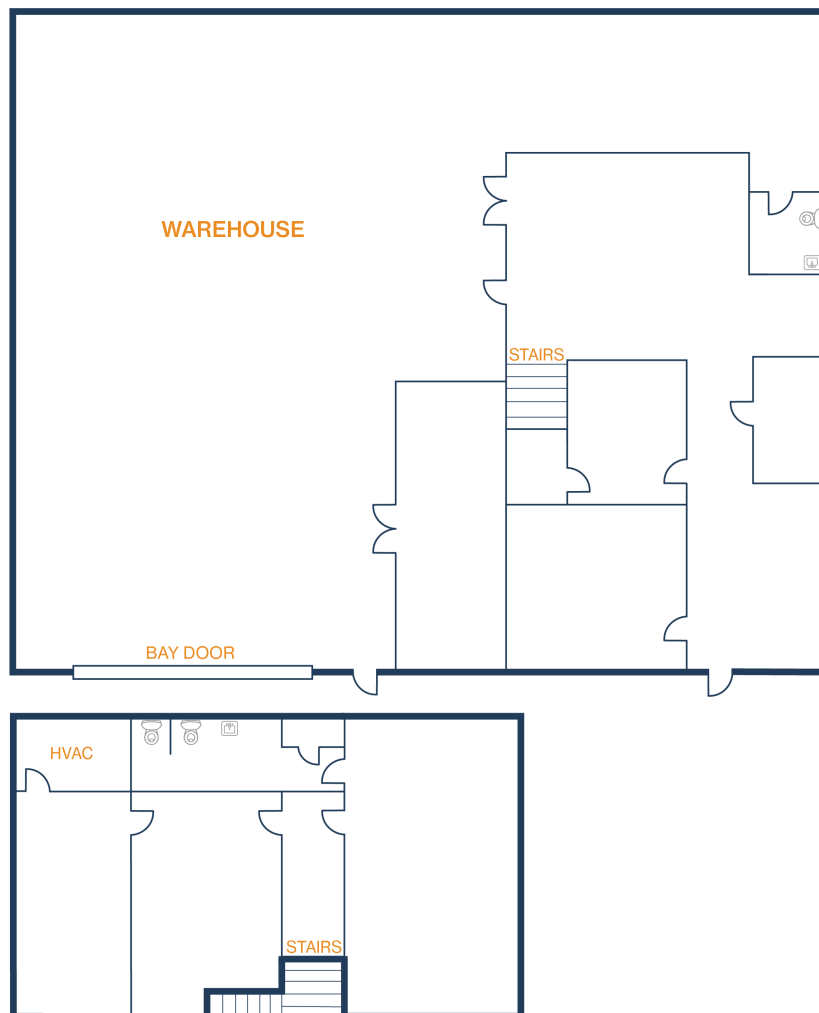
THEALL BUSINESS PARK

6723-6825 THEALL RD
HOUSTON, TEXAS 77066

UNIT 6807-D – 2,500 SF

925 SF OFFICE / 1,575 SF WAREHOUSE

- 18' Clear Height
- (1) 12' x 14' Grade Level Door
- Upstairs Office
- Fully Insulated



RYAN YOUNG
281.584.3320
ryan.young@fort-companies.com

This information is deemed reliable,
however, Fort makes no guarantee,
warranties, or representations as to the
completeness or accuracy thereof.



FORT
LEASING

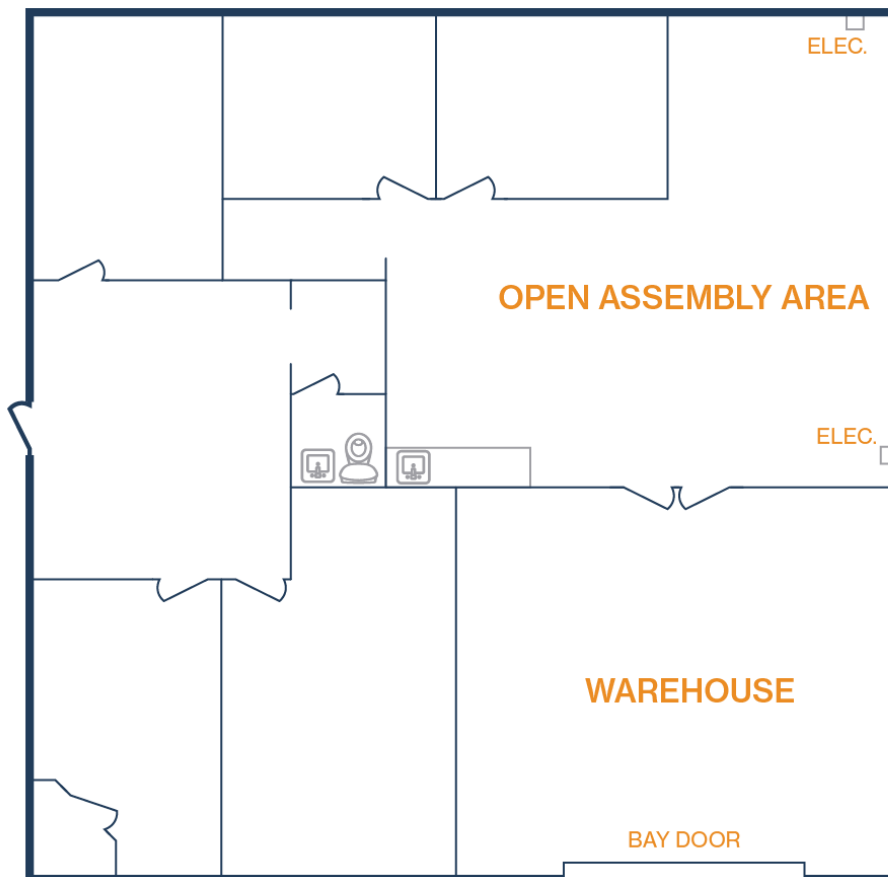
THEALL BUSINESS PARK

6723-6825 THEALL RD
HOUSTON, TEXAS 77066

UNIT 6723-D – 2,500 SF

775 SF OFFICE / 1,725 SF WAREHOUSE

- 18' Clear Height
- Fully Insulated Warehouse
- Fenced and Gated
- (1) 12' X 14' Grade-Level Door



RYAN YOUNG
281.584.3320
ryan.young@fort-companies.com

This information is deemed reliable, however, Fort makes no guarantee, warranties, or representations as to the completeness or accuracy thereof.



FORT
LEASING

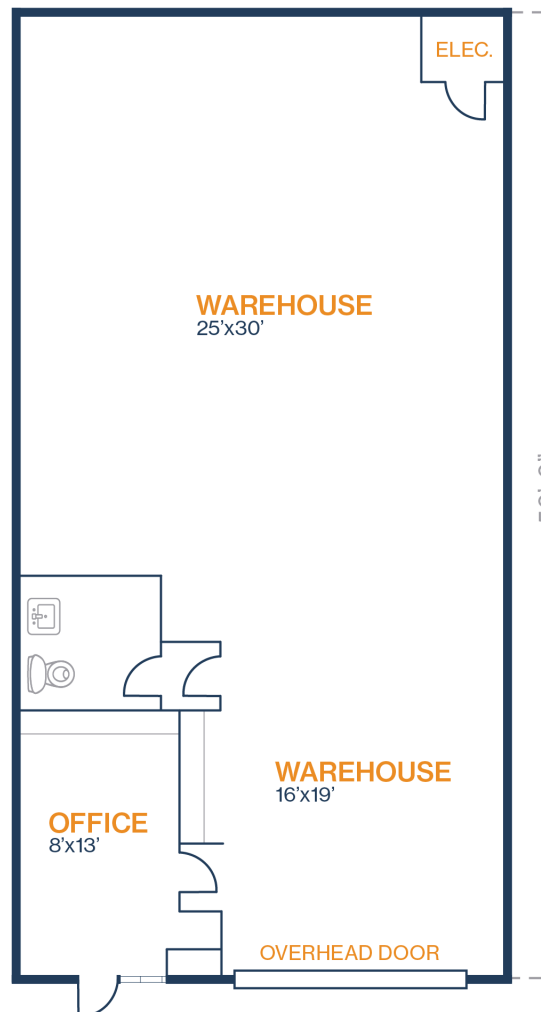
THEALL BUSINESS PARK

6723-6825 THEALL RD
HOUSTON, TEXAS 77066

UNIT 6723-F – 1,250 SF

388 SF OFFICE / 863 SF WAREHOUSE

- 18' Clear Height
- (1) 12' x 14' Grade Level Door
- Fully Insulated



RYAN YOUNG
281.584.3320
ryan.young@fort-companies.com

This information is deemed reliable, however, Fort makes no guarantee, warranties, or representations as to the completeness or accuracy thereof.