

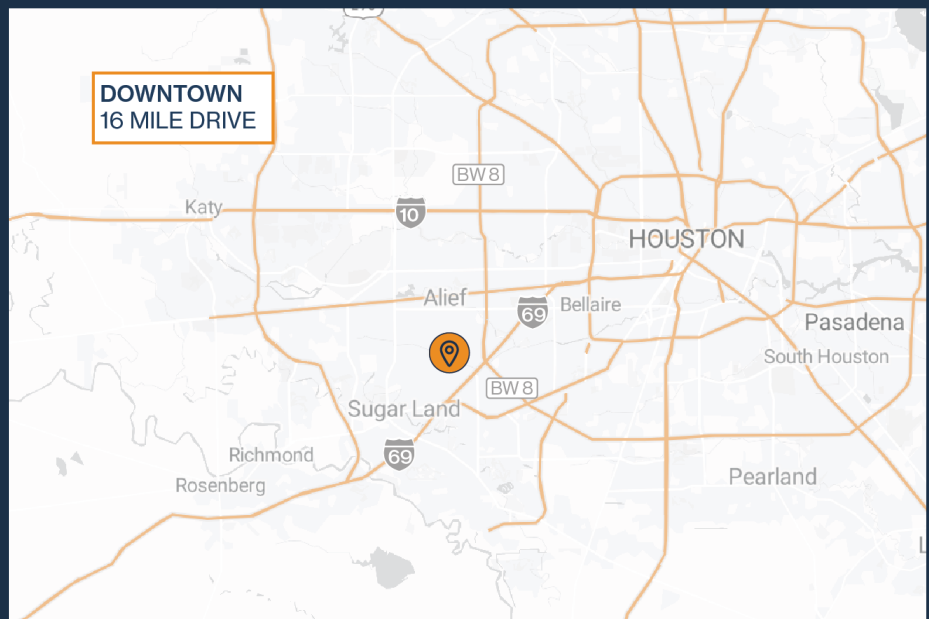
# STONECREST

10804-10816 FALLSTONE RD, 11000, DR WILCREST, HOUSTON, TEXAS 77099



178 SF - 10,561 SF  
SUITES AVAILABLE

- Sugar Land / Sugar Land Submarket
- 12' - 21' Clear Height
- Grade-Level Loading



**THOMAS PFEIFER**

832.405.6369

[thomas.pfeifer@fort-companies.com](mailto:thomas.pfeifer@fort-companies.com)



This information is deemed reliable, however, Fort makes no guarantee, warranties, or representations as to the completeness or accuracy thereof.





**FORT**  
LEASING

# STONECREST

10804-10816 FALLSTONE RD, 11000, DR  
WILCREST  
HOUSTON, TEXAS 77099

## SITE PLAN



**THOMAS PFEIFER**  
832.405.6369  
thomas.pfeifer@fort-companies.com

This information is deemed reliable, however, Fort makes no guarantee, warranties, or representations as to the completeness or accuracy thereof.



**FORT**  
LEASING

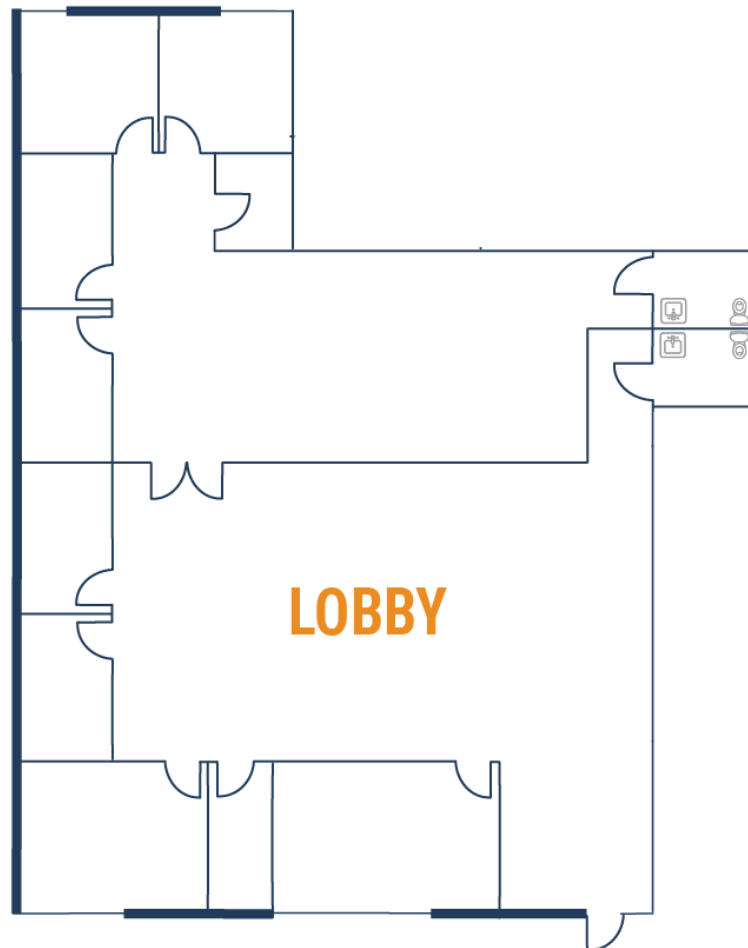
# STONECREST

10804-10816 FALLSTONE RD, 11000, DR  
WILCREST  
HOUSTON, TEXAS 77099

## UNIT 127 – 3,605 SF

3,605 SF OFFICE / 0 SF WAREHOUSE

- Glass Storefront
- 600 amp 277/480 volt, 3 Phase Power



**THOMAS PFEIFER**

832.405.6369

thomas.pfeifer@fort-companies.com

This information is deemed reliable, however, Fort makes no guarantee, warranties, or representations as to the completeness or accuracy thereof.



**FORT**  
LEASING

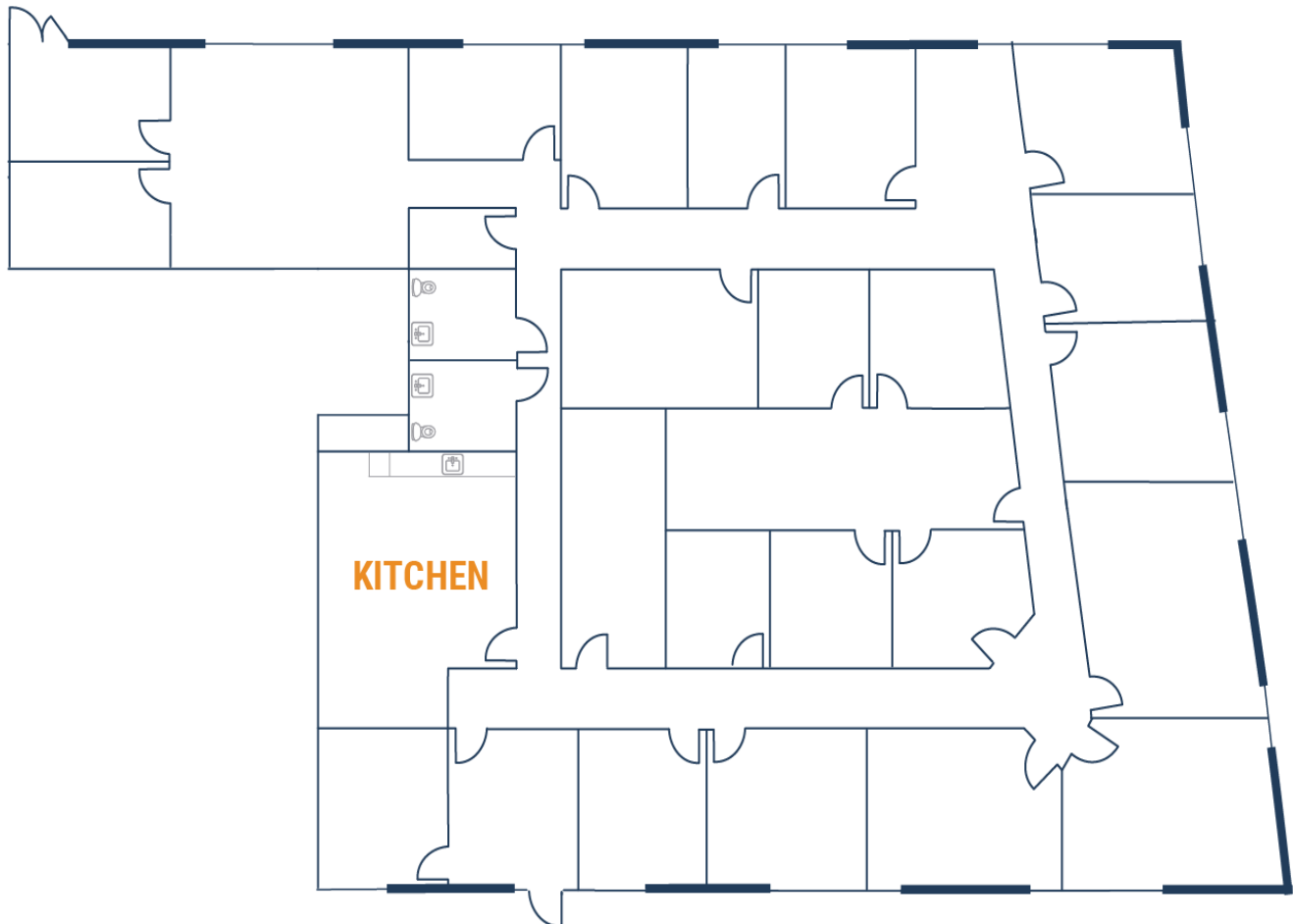
# STONECREST

10804-10816 FALLSTONE RD, 11000, DR  
WILCREST  
HOUSTON, TEXAS 77099

## UNIT 125 – 7,191 SF

7,191 SF OFFICE / 0 SF WAREHOUSE

- Glass Storefront



**THOMAS PFEIFER**

832.405.6369

[thomas.pfeifer@fort-companies.com](mailto:thomas.pfeifer@fort-companies.com)

This information is deemed reliable, however, Fort makes no guarantee, warranties, or representations as to the completeness or accuracy thereof.





**FORT**  
LEASING

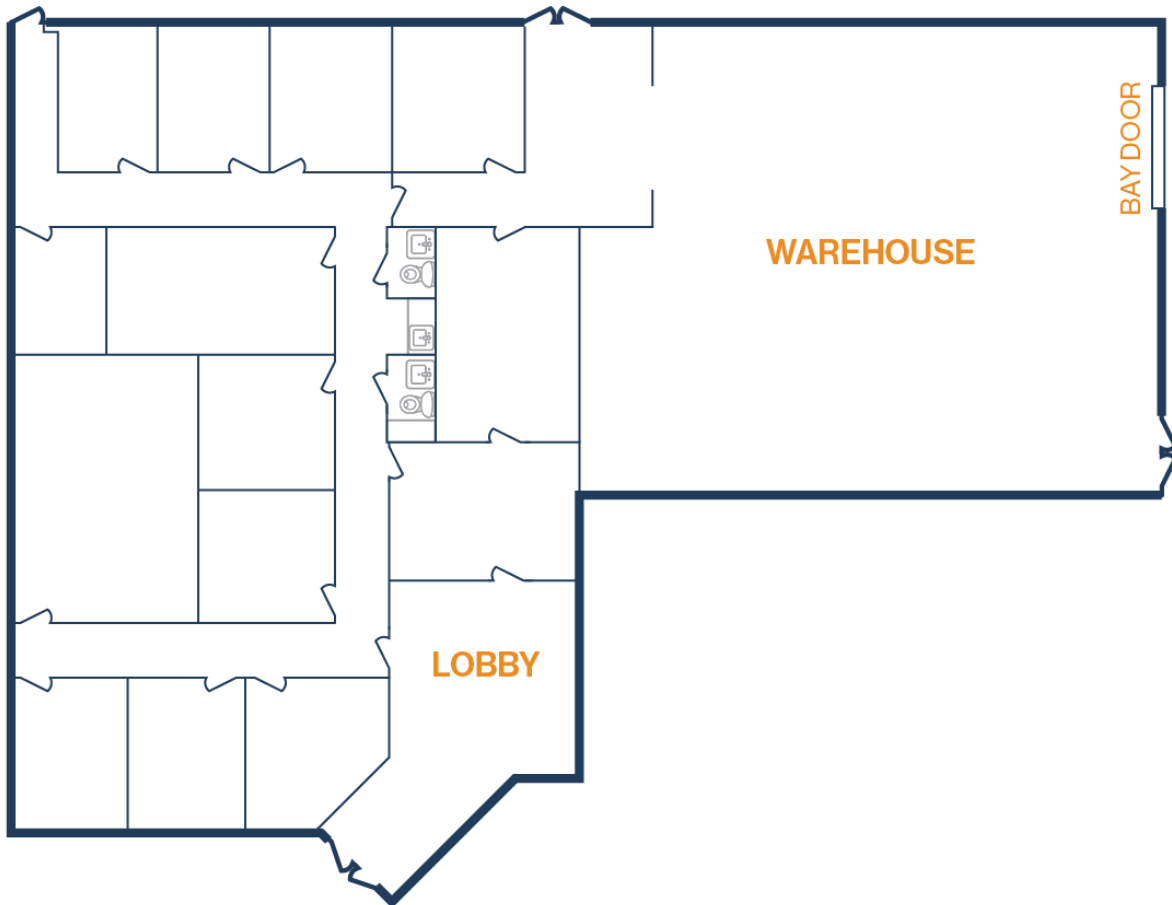
**STONECREST**

10804-10816 FALLSTONE RD, 11000, DR  
WILCREST  
HOUSTON, TEXAS 77099

## UNIT 135 – 7,136 SF

4,638 SF OFFICE / 2,498 SF WAREHOUSE

- 14' Clear Height
- Dock Doors, Grade Level Loading
- Glass Storefront
- 277/480-Volt, 3 Phase Power
- Climate Controlled Warehouse



**THOMAS PFEIFER**

832.405.6369

thomas.pfeifer@fort-companies.com

This information is deemed reliable, however, Fort makes no guarantee, warranties, or representations as to the completeness or accuracy thereof.



**FORT**  
LEASING

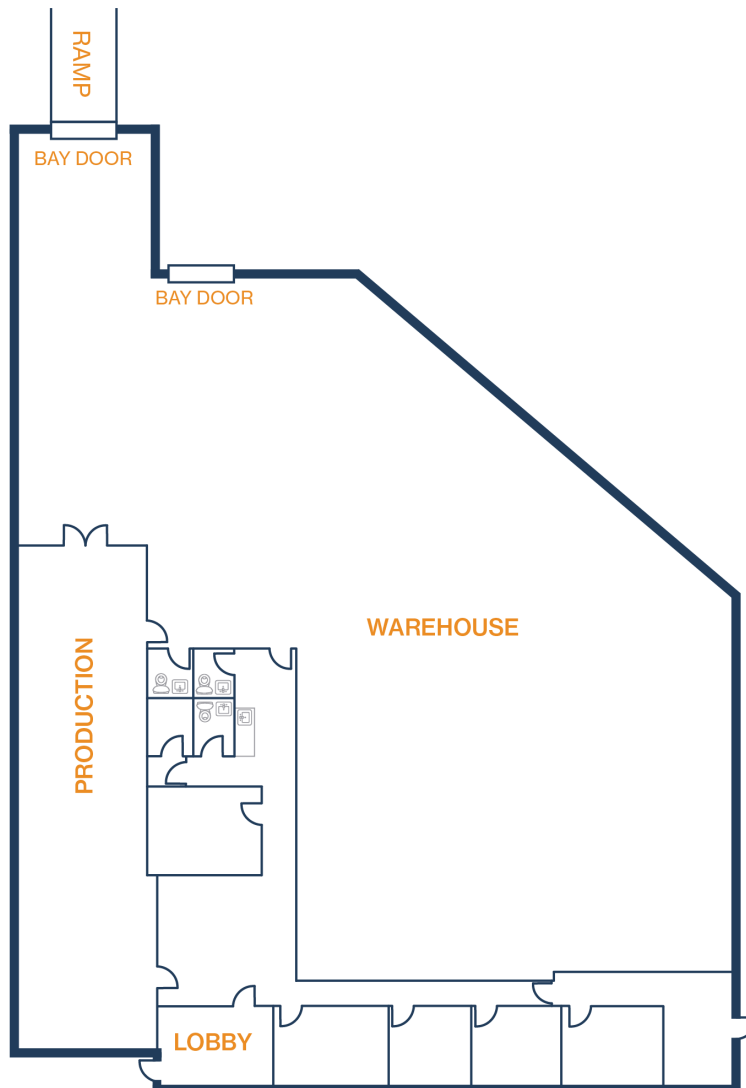
**STONECREST**

10804-10816 FALLSTONE RD, 11000, DR  
WILCREST  
HOUSTON, TEXAS 77099

## UNIT 500 – 10,561 SF

3,168 SF OFFICE / 7,393 SF WAREHOUSE

- Glass Storefront
- 600 amp 277/480 volt, 3 Phase Power



**THOMAS PFEIFER**

832.405.6369

thomas.pfeifer@fort-companies.com

This information is deemed reliable, however, Fort makes no guarantee, warranties, or representations as to the completeness or accuracy thereof.