

PLAZA PARK

7505 – 7563 SOUTH FWY HOUSTON, TX 77021



**SOUTH INNER LOOP
SUBMARKET**



**GREAT ACCESS TO I-610,
HWY-90, AND HWY-288**



14' CLEAR HEIGHT



TENANT-CONTROLLED HVAC



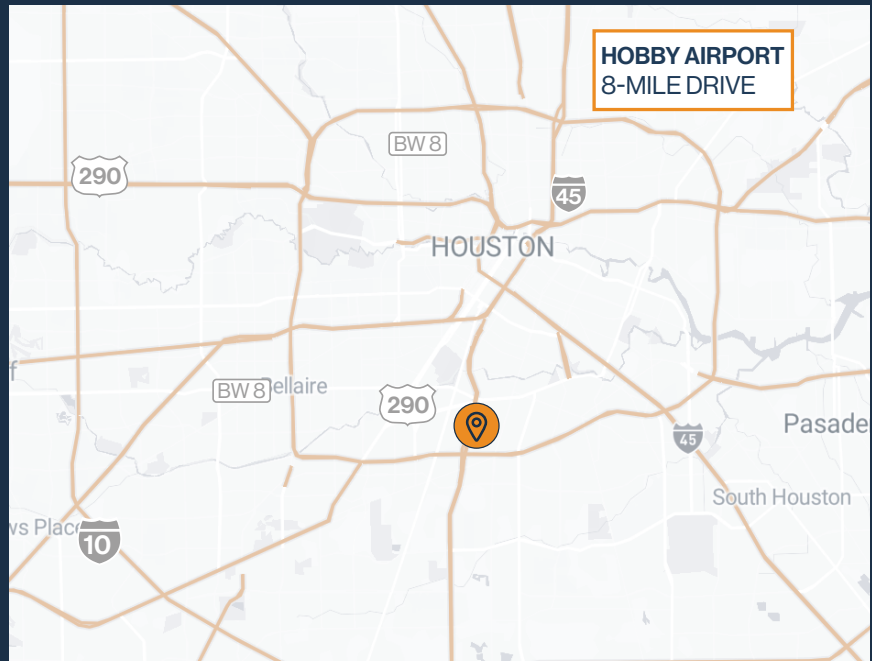
**GRADE-LEVEL AND
DOCK LOADING**



GLASS STOREFRONT



**2,017 SF – 13,335 SF
SUITES AVAILABLE**



THOMAS PFEIFER



281.504.7460



THOMAS.PFEIFER@FORT-COMPANIES.COM

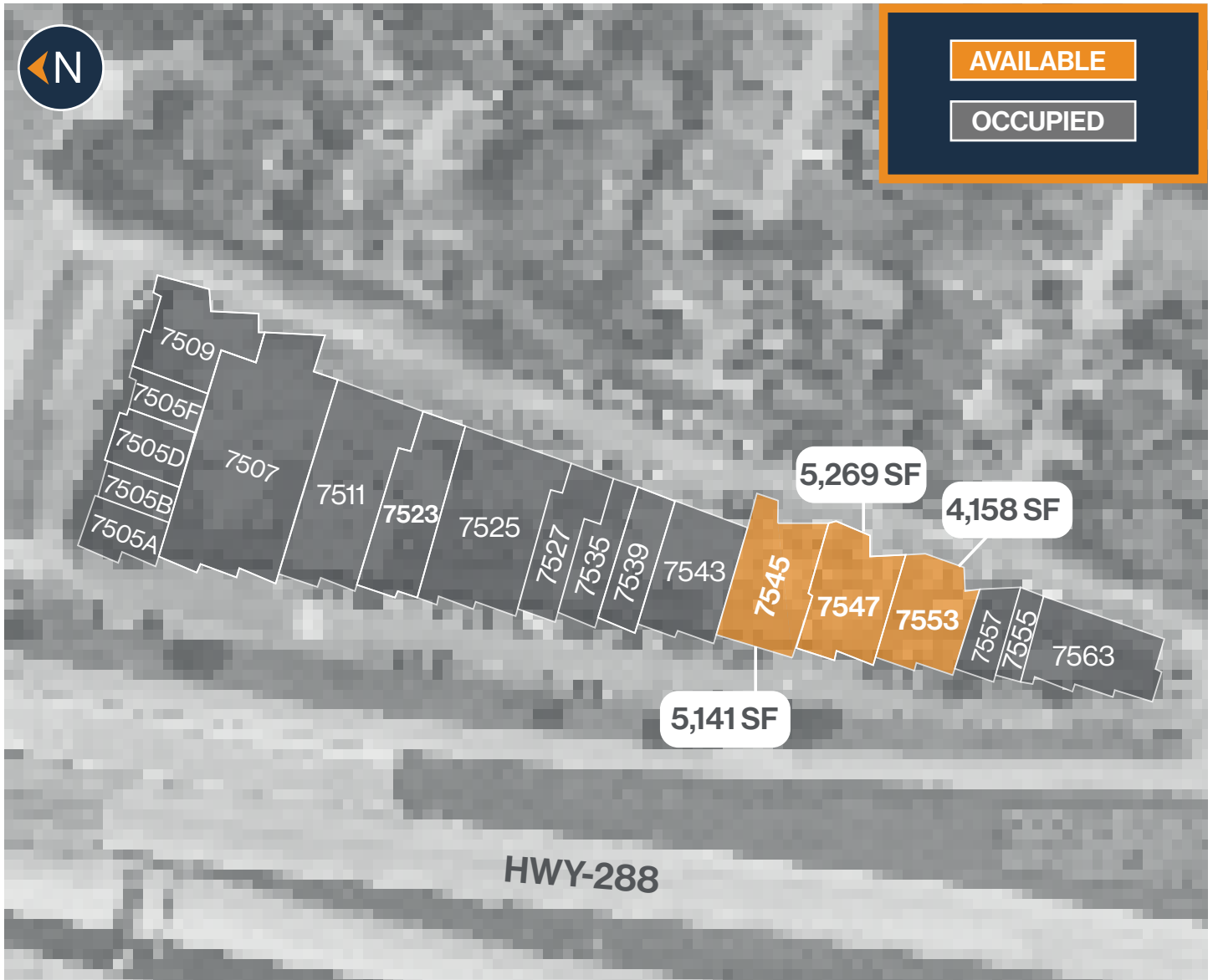


FORT
LEASING

This information is deemed reliable, however, Fort makes no guarantee, warranties, or representations as to the completeness or accuracy thereof.



SITE PLAN



THOMAS PFEIFER



281.504.7460

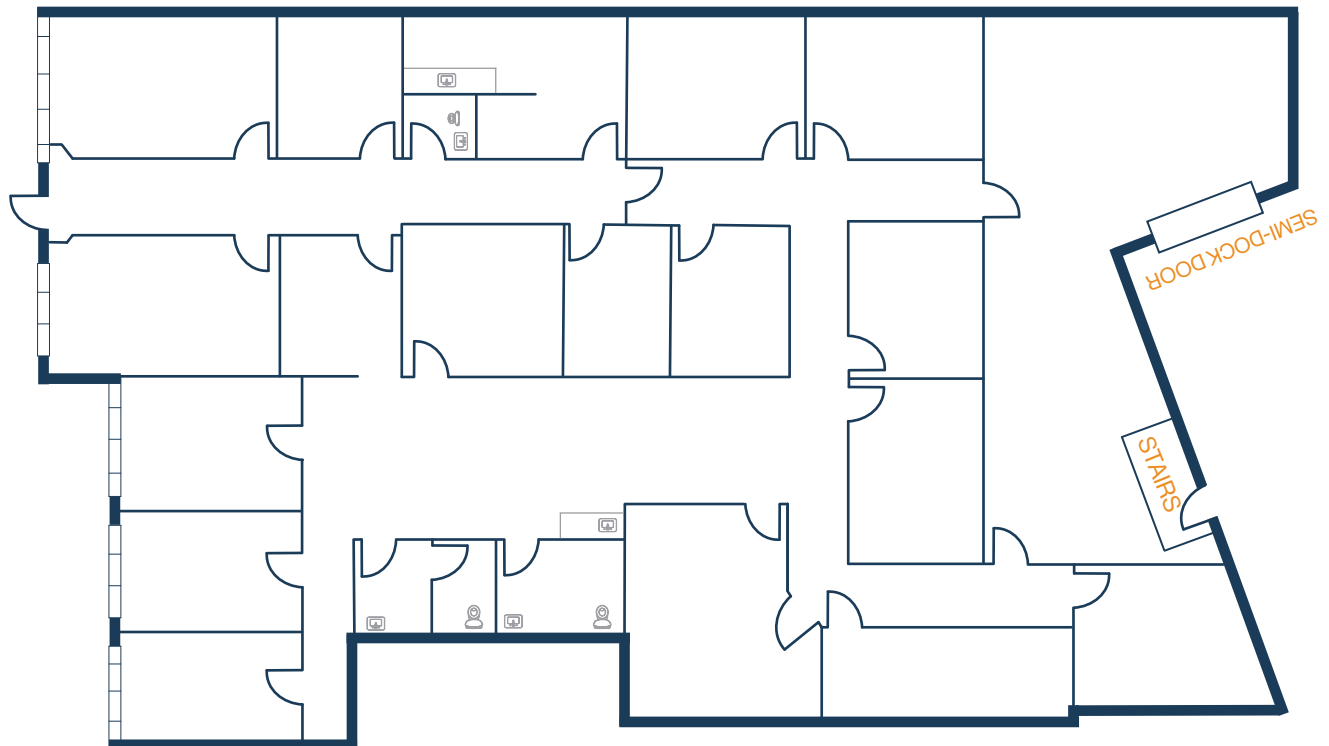


THOMAS.PFEIFER@FORT-COMPANIES.COM



FLOOR PLAN — AVAILABLE IMMEDIATELY

- » 5,141 SF Total Available
 - » 4,369 SF Office
 - » 772 SF Warehouse
- » (1) Semi-Dock Door
- » Glass Storefront



THOMAS PFEIFER



281.504.7460

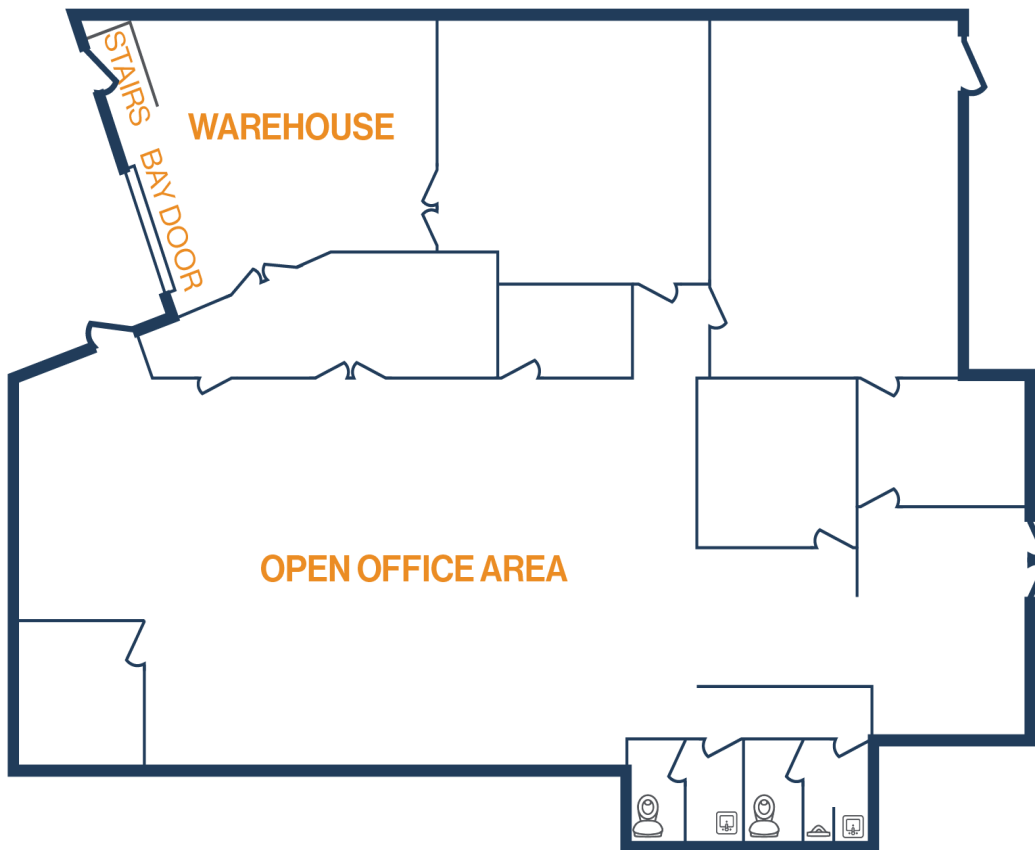


THOMAS.PFEIFER@FORT-COMPANIES.COM



FLOOR PLAN — AVAILABLE IMMEDIATELY

- » 5,269 SF Total Available
- » (1) Ramp
- » 4,742 SF Office
- » 527 SF Warehouse





FLOOR PLAN — AVAILABLE IMMEDIATELY

- » 4,158 SF Total Available
- » 100% Office
- » Glass Storefront

