

PLAZA PARK

7505 – 7563 SOUTH FWY HOUSTON, TX 77021



**SOUTH INNER LOOP
SUBMARKET**



**GREAT ACCESS TO I-610,
HWY-90, AND HWY-288**



14' CLEAR HEIGHT



TENANT-CONTROLLED HVAC



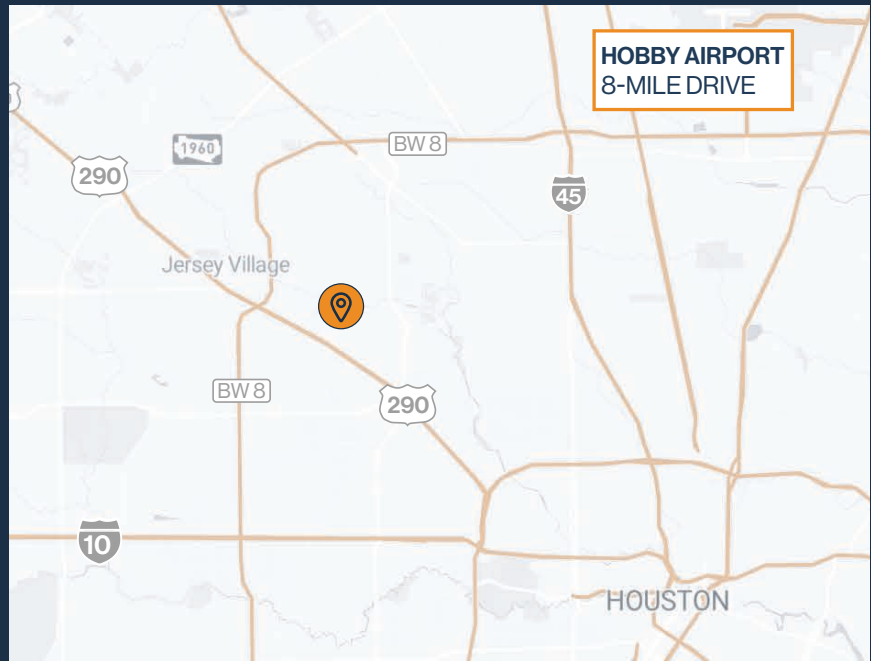
**GRADE-LEVEL AND
DOCK LOADING**



GLASS STOREFRONT



**2,017 SF – 13,335 SF
SUITES AVAILABLE**



THOMAS PFEIFER



281.504.7460



THOMAS.PFEIFER@FORT-COMPANIES.COM



FORT
LEASING

This information is deemed reliable, however, Fort makes no guarantee, warranties, or representations as to the completeness or accuracy thereof.



FORT
LEASING

PLAZA PARK

7505 – 7563 South Fwy
Houston, TX 77021

SITE PLAN



THOMAS PFEIFER



281.504.7460



THOMAS.PFEIFER@FORT-COMPANIES.COM

This information is deemed reliable, however, Fort makes no guarantee, warranties, or representations as to the completeness or accuracy thereof.



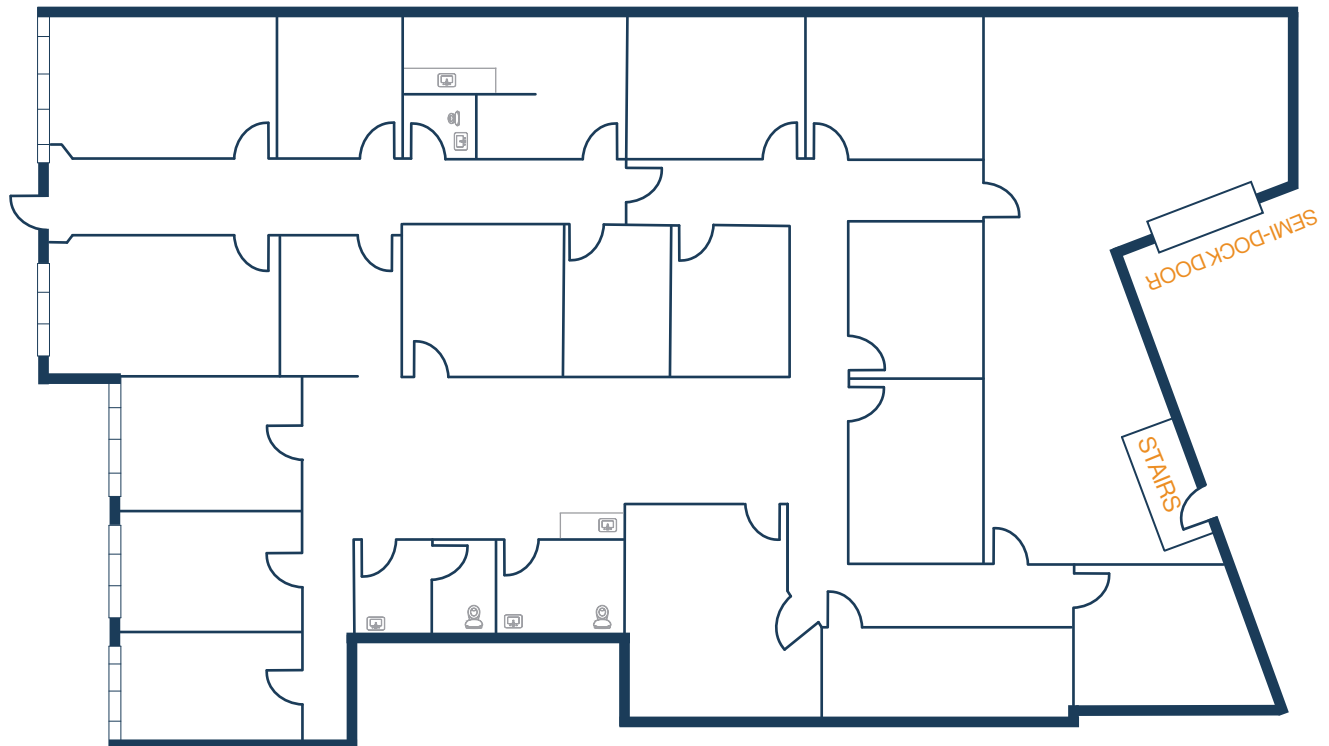
FORT
LEASING

PLAZA PARK

7545 South Fwy
Houston, TX 77021

FLOOR PLAN — AVAILABLE IMMEDIATELY

- » 5,141 SF Total Available
- » 4,369 SF Office
- » 772 SF Warehouse
- » (1) Semi-Dock Door
- » Glass Storefront



THOMAS PFEIFER



281.504.7460



THOMAS.PFEIFER@FORT-COMPANIES.COM

This information is deemed reliable, however, Fort makes no guarantee, warranties, or representations as to the completeness or accuracy thereof.



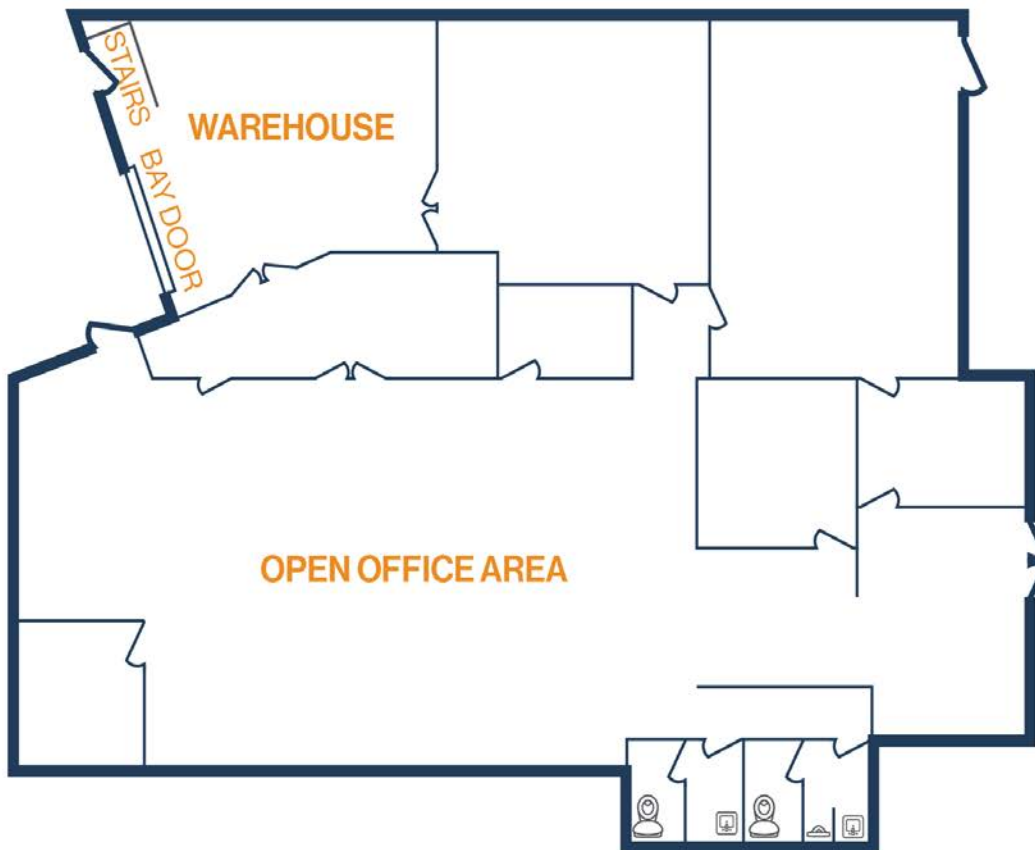
FORT
LEASING

PLAZA PARK

7547 South Fwy
Houston, TX 77021

FLOOR PLAN — AVAILABLE IMMEDIATELY

- » 5,269 SF Total Available
- » (1) Ramp
- » 4,742 SF Office
- » 527 SF Warehouse



THOMAS PFEIFER



281.504.7460



THOMAS.PFEIFER@FORT-COMPANIES.COM

This information is deemed reliable, however, Fort makes no guarantee, warranties, or representations as to the completeness or accuracy thereof.



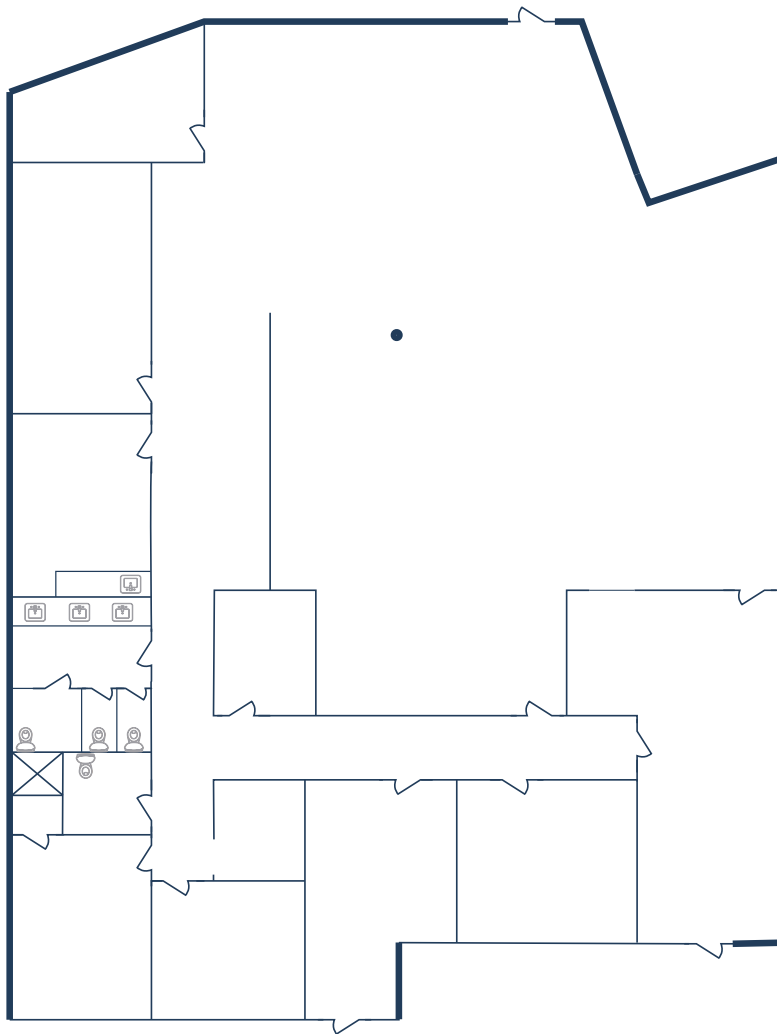
FORT
LEASING

PLAZA PARK

7553 South Fwy
Houston, TX 77021

FLOOR PLAN — AVAILABLE IMMEDIATELY

- » 4,158 SF Total Available
- » 100% Office
- » Glass Storefront



THOMAS PFEIFER



281.504.7460



THOMAS.PFEIFER@FORT-COMPANIES.COM

This information is deemed reliable, however, Fort makes no guarantee, warranties, or representations as to the completeness or accuracy thereof.