

TOMBALL PKY BUSINESS CENTER

22955 TOMBALL PARKWAY, TOMBALL, TX 77377



**NORTHWEST HOUSTON
SUBMARKET**



**GREAT ACCESS TO TOM-
BALL PARKWAY/TX-249**



18' - 23' CLEAR HEIGHT



**TENANT-CONTROLLED
HVAC**



**12' X 14' GRADE-LEVEL
LOADING**



18-WHEELER ACCESSIBLE



**2,181 SF - 5,276 SF
SUITES AVAILABLE**



RYAN YOUNG

281.584.3320

RYAN.YOUNG@FORT-COMPANIES.COM

THOMAS PFEIFER

281.504.7460

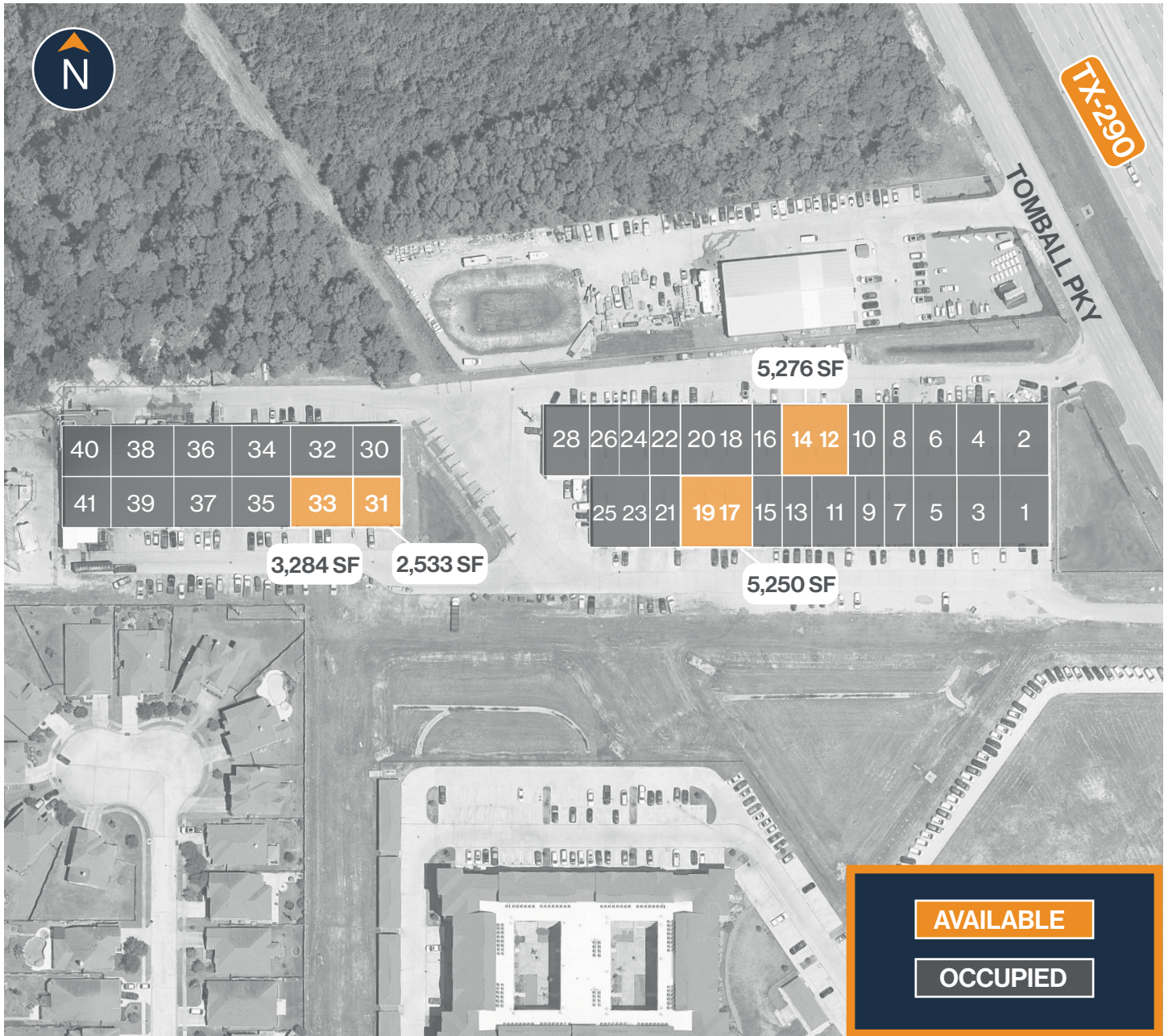
THOMAS.PFEIFER@FORT-COMPANIES.COM



FORT
LEASING



SITE PLAN



RYAN YOUNG

281.584.3320

RYAN.YOUNG@FORT-COMPANIES.COM

THOMAS PFEIFER

281.504.7460

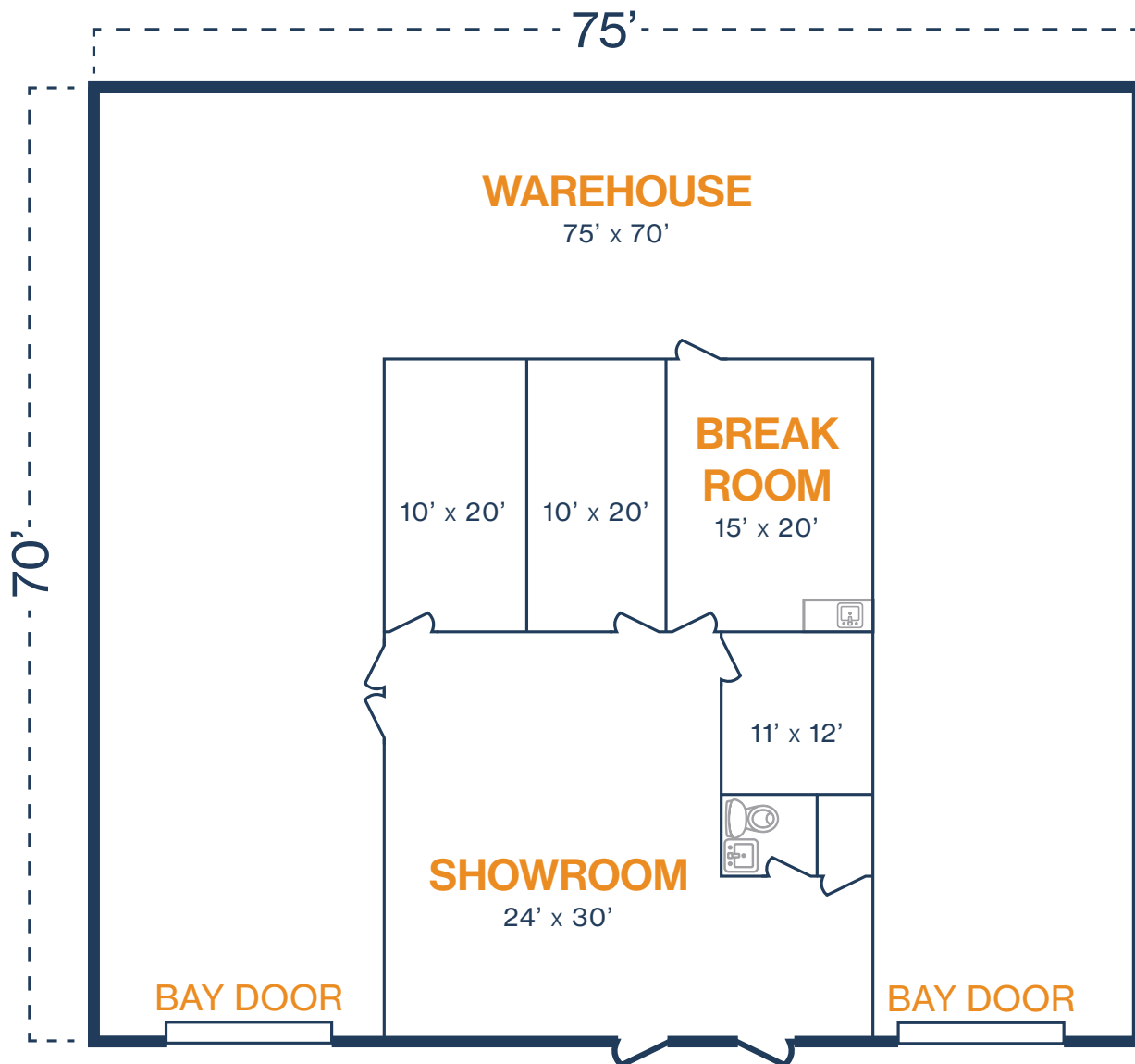
THOMAS.PFEIFER@FORT-COMPANIES.COM

This information is deemed reliable, however, Fort makes no guarantee, warranties, or representations as to the completeness or accuracy thereof.



FLOOR PLAN — AVAILABLE IMMEDIATELY

- » 5,276 SF Total Available
- » 1,750 SF Office
- » 3,526 SF Warehouse
- » (2) 12' x 14' Grade Level Doors



**All SF labels are approximations

RYAN YOUNG

281.584.3320

RYAN.YOUNG@FORT-COMPANIES.COM

THOMAS PFEIFER

281.504.7460

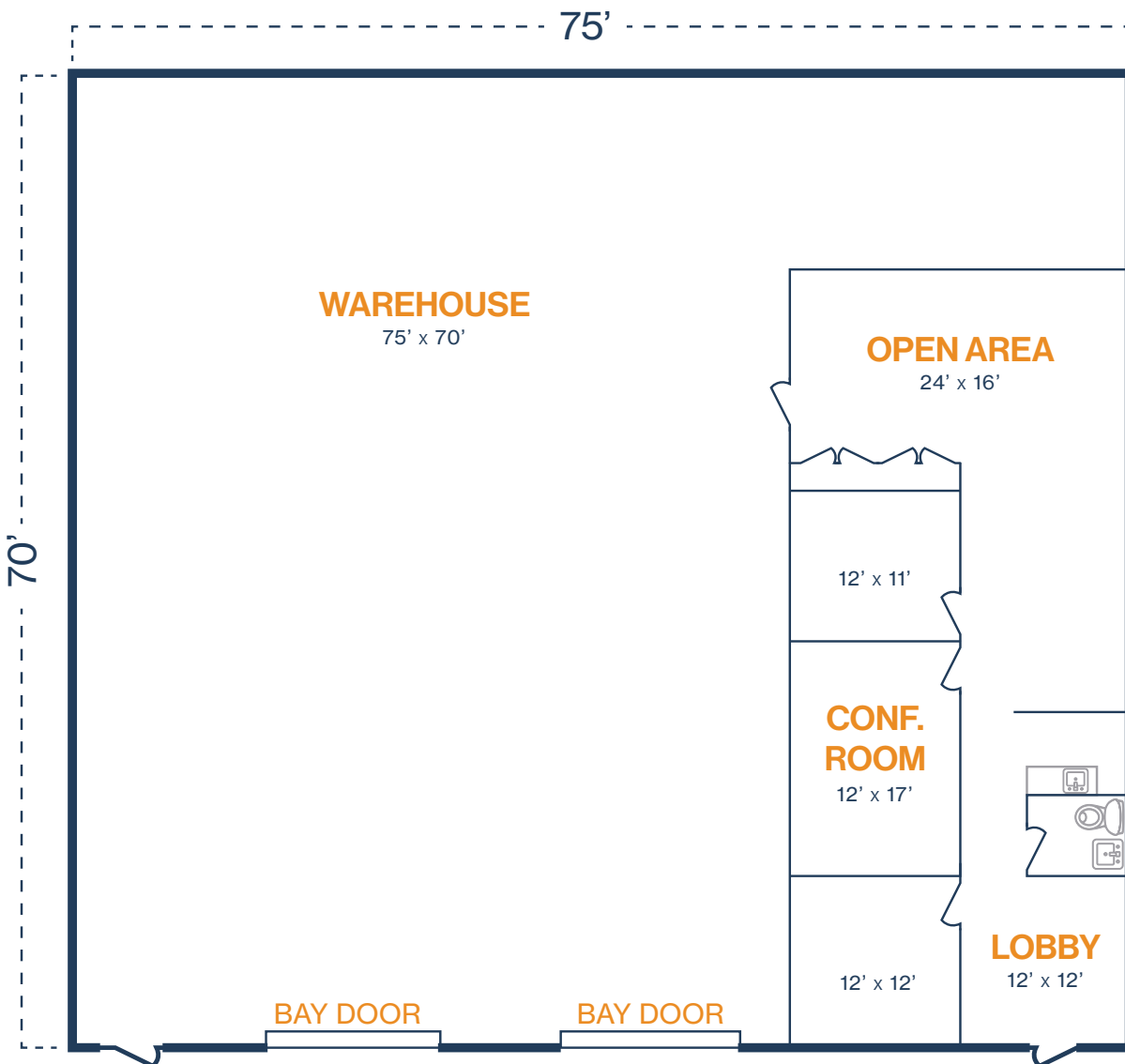
THOMAS.PFEIFER@FORT-COMPANIES.COM

This information is deemed reliable, however, Fort makes no guarantee, warranties, or representations as to the completeness or accuracy thereof.



FLOOR PLAN — AVAILABLE IMMEDIATELY

- » 5,250 SF Total Available
 - » 1,350 SF Office
 - » 3,900 SF Warehouse
- » (2) 12' x 14' Grade Level Doors



**All SF labels are approximations

RYAN YOUNG

281.584.3320

RYAN.YOUNG@FORT-COMPANIES.COM

THOMAS PFEIFER

281.504.7460

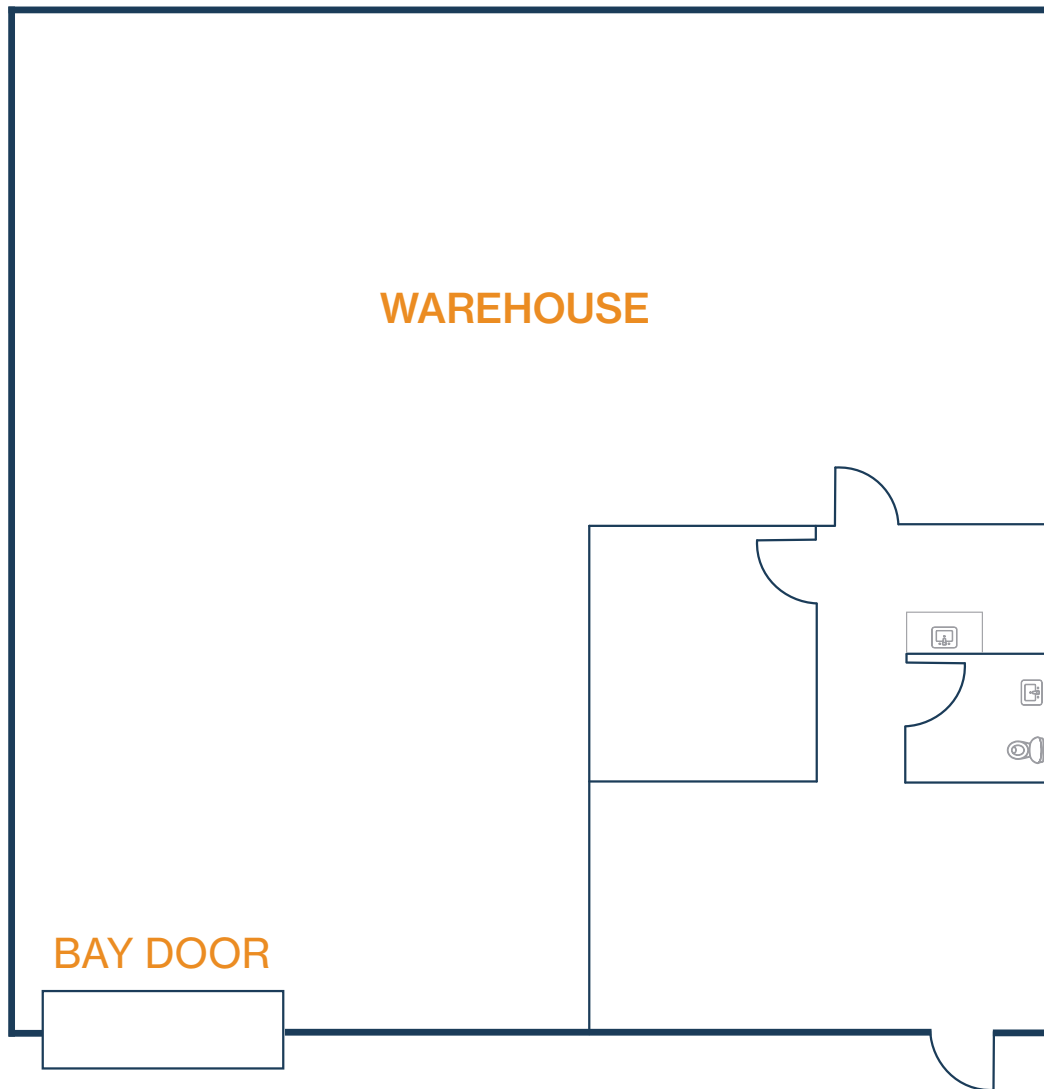
THOMAS.PFEIFER@FORT-COMPANIES.COM

This information is deemed reliable, however, Fort makes no guarantee, warranties, or representations as to the completeness or accuracy thereof.



FLOOR PLAN — AVAILABLE IMMEDIATELY

- » 2,533 SF Total Available
- » 506 SF Office
- » 2,027 SF Warehouse
- » (1) Grade Level Door



RYAN YOUNG

281.584.3320

RYAN.YOUNG@FORT-COMPANIES.COM

THOMAS PFEIFER

281.504.7460

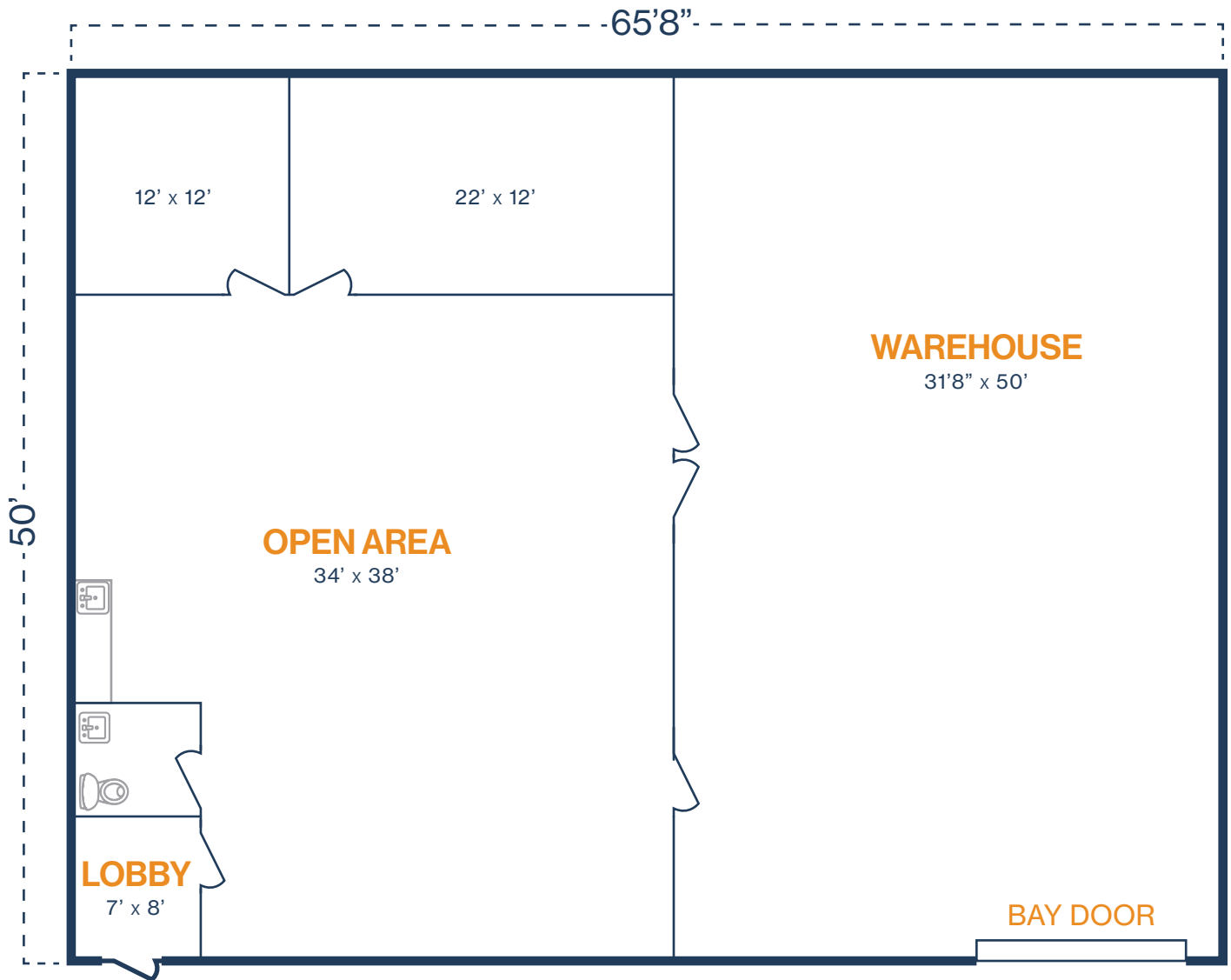
THOMAS.PFEIFER@FORT-COMPANIES.COM

This information is deemed reliable, however, Fort makes no guarantee, warranties, or representations as to the completeness or accuracy thereof.



FLOOR PLAN — AVAILABLE IMMEDIATELY

- » 3,284 SF Total Available
 - » 1,700 SF Office
 - » 1,584 SF Warehouse
- » (1) 12' x 14' Grade Level Door



**All SF labels are approximations

RYAN YOUNG

281.584.3320

RYAN.YOUNG@FORT-COMPANIES.COM

THOMAS PFEIFER

281.504.7460

THOMAS.PFEIFER@FORT-COMPANIES.COM

This information is deemed reliable, however, Fort makes no guarantee, warranties, or representations as to the completeness or accuracy thereof.