

JULIE MARIE BUSINESS CENTER

21414 JULIE MARIE LANE, KATY, TX 77449



**WEST HOUSTON/
KATY SUBMARKET**



**GREAT ACCESS TO I-10
AND HWY-99**



AMPLE TENANT PARKING



TENANT-CONTROLLED HVAC



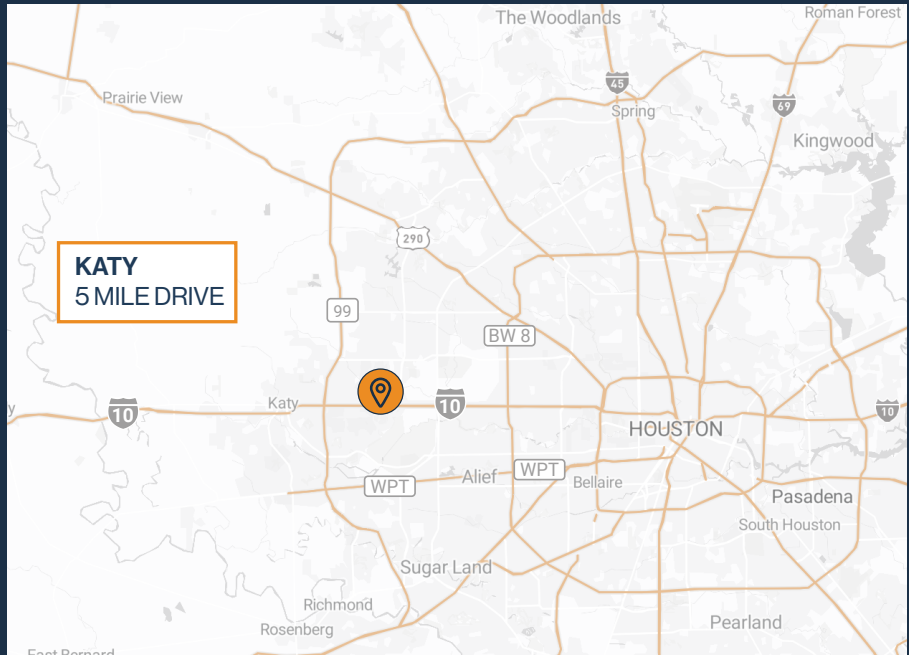
**10' X 10' GRADE-LEVEL
LOADING**



**GLASS STOREFRONT &
SHOWROOM-READY SPACES**



**1,000 SF - 4,000 SF
SUITES AVAILABLE**



RYAN YOUNG

281.584.3320

RYAN.YOUNG@FORT-COMPANIES.COM

THOMAS PFEIFER

281.504.7460

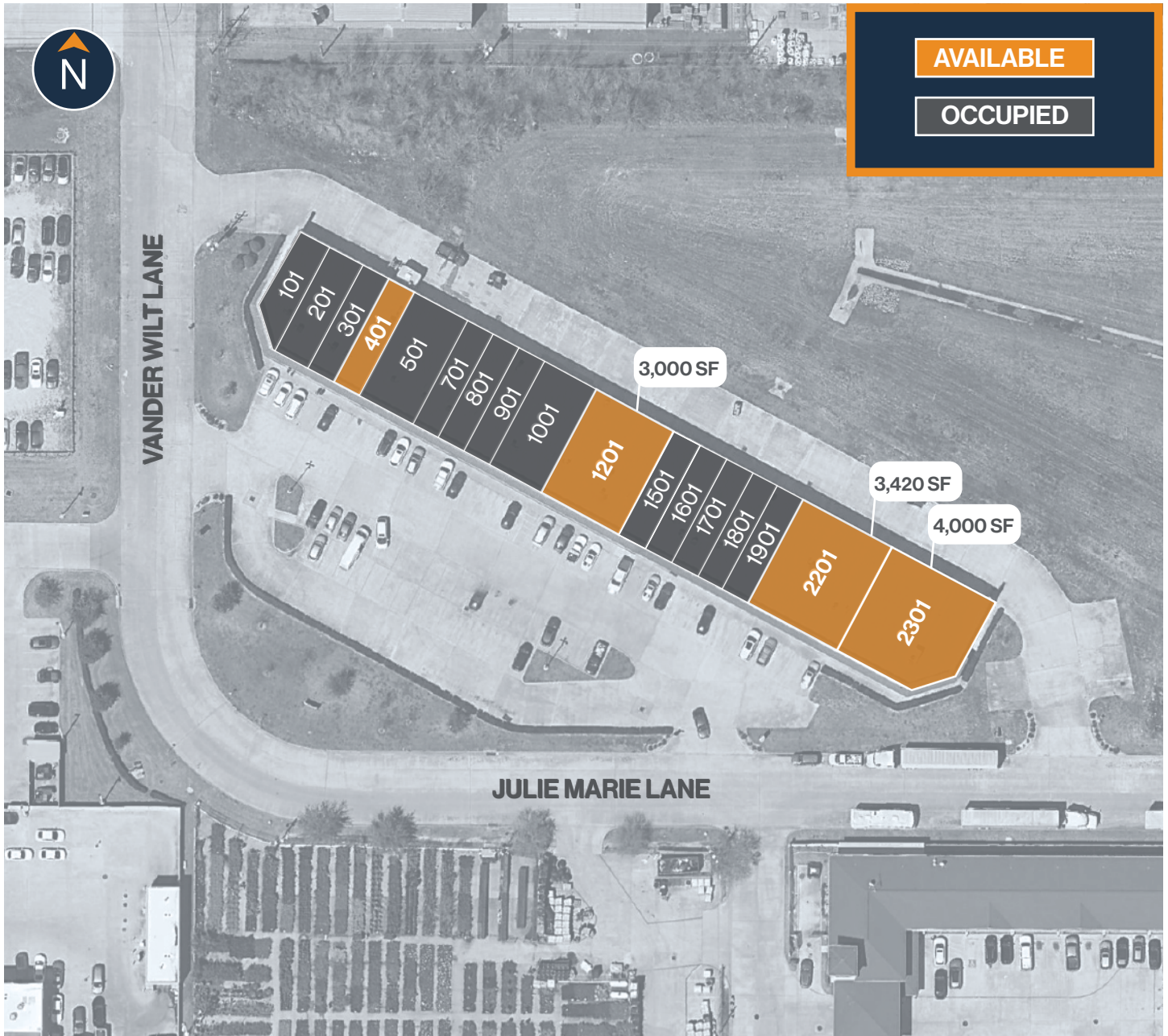
THOMAS.PFEIFER@FORT-COMPANIES.COM



**FORT
LEASING**



SITE PLAN



RYAN YOUNG

281.584.3320

RYAN.YOUNG@FORT-COMPANIES.COM

THOMAS PFEIFER

281.504.7460

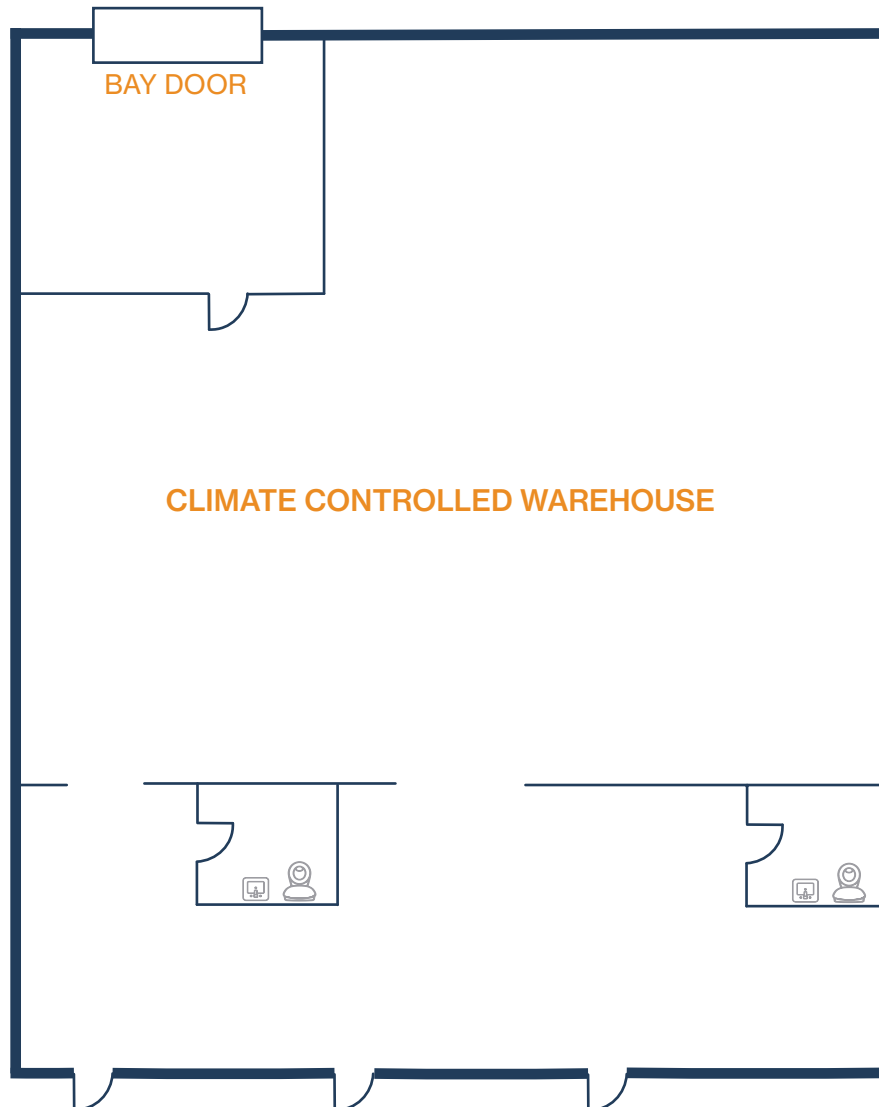
THOMAS.PFEIFER@FORT-COMPANIES.COM

This information is deemed reliable, however, Fort makes no guarantee, warranties, or representations as to the completeness or accuracy thereof.



FLOOR PLAN — AVAILABLE IMMEDIATELY

- » 3,000 SF Total Available
- » Glass Storefront
- » (1) Grade Level Door
- » 100% Climate Controlled



RYAN YOUNG

281.584.3320

RYAN.YOUNG@FORT-COMPANIES.COM

THOMAS PFEIFER

281.504.7460

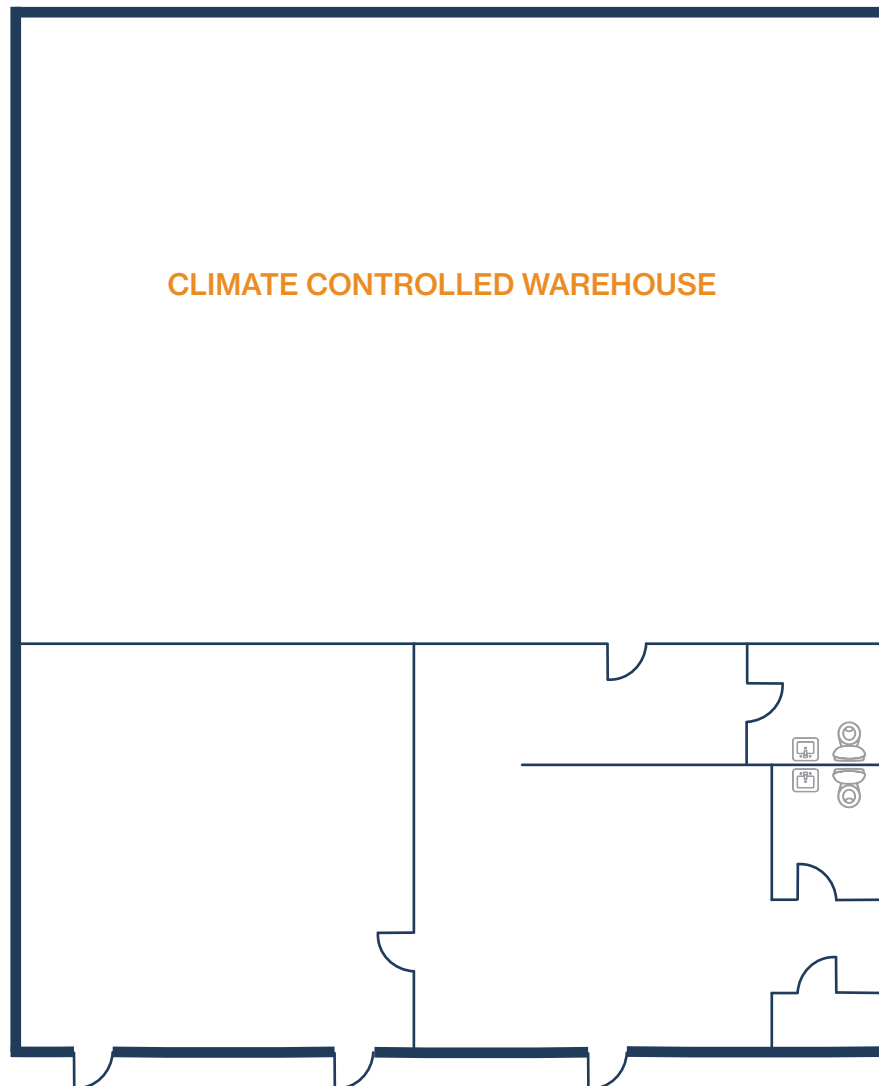
THOMAS.PFEIFER@FORT-COMPANIES.COM

This information is deemed reliable, however, Fort makes no guarantee, warranties, or representations as to the completeness or accuracy thereof.



FLOOR PLAN — AVAILABLE IMMEDIATELY

- » 3,420 SF Total Available
- » Glass Storefront
- » (1) Grade Level Door
- » 100% Climate Controlled



RYAN YOUNG

281.584.3320

RYAN.YOUNG@FORT-COMPANIES.COM

THOMAS PFEIFER

281.504.7460

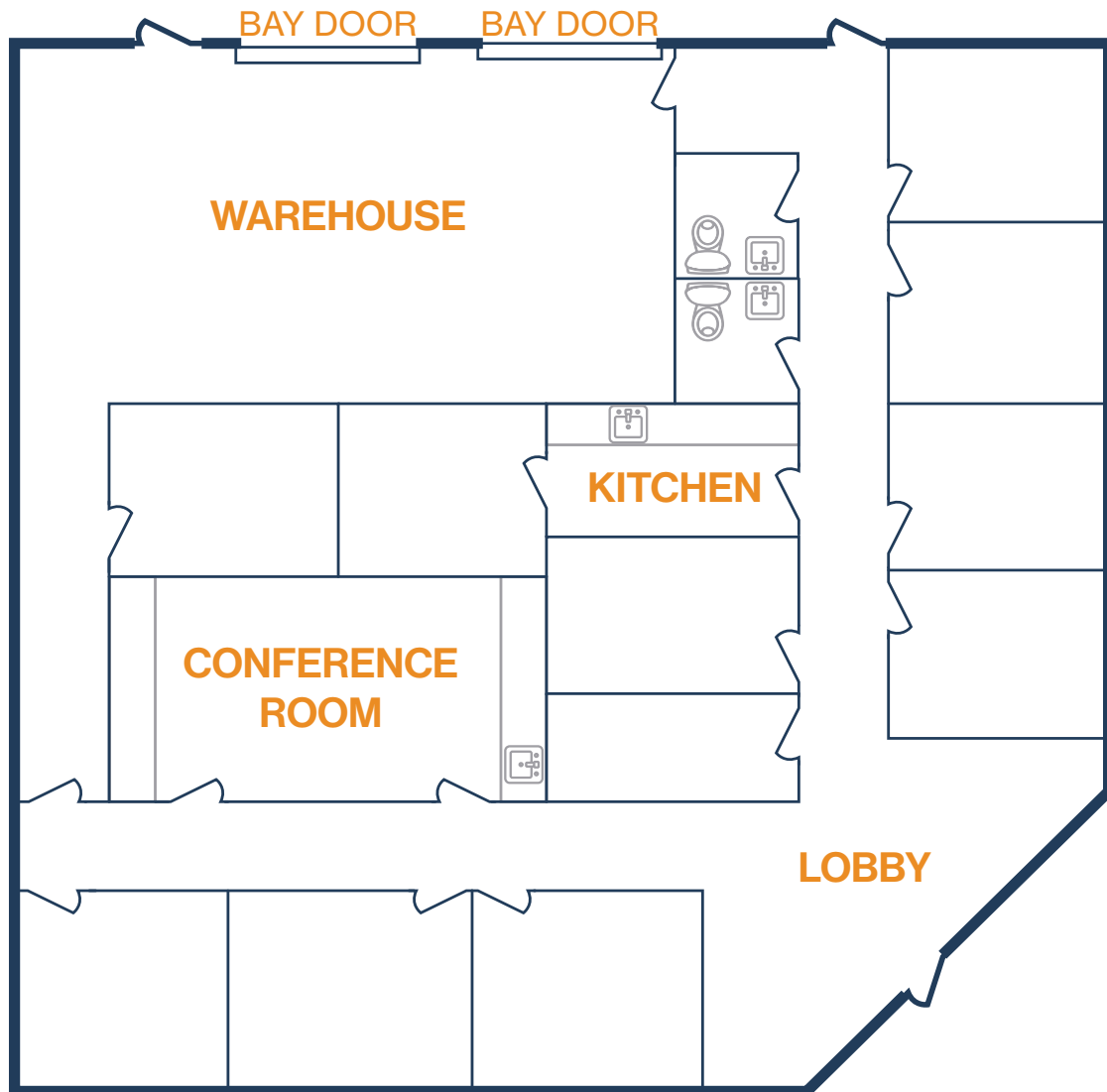
THOMAS.PFEIFER@FORT-COMPANIES.COM

This information is deemed reliable, however, Fort makes no guarantee, warranties, or representations as to the completeness or accuracy thereof.



FLOOR PLAN — AVAILABLE IMMEDIATELY

- » 4,000 SF Total Available
- » 3,070 SF Office
- » 930 SF Warehouse
- » Glass Storefront
- » (2) 10' x 10' Grade Level Doors
- » (11) Offices
- » (1) Conference Room
- » (1) Kitchen/Break Room



RYAN YOUNG

281.584.3320

RYAN.YOUNG@FORT-COMPANIES.COM

THOMAS PFEIFER

281.504.7460

THOMAS.PFEIFER@FORT-COMPANIES.COM

This information is deemed reliable, however, Fort makes no guarantee, warranties, or representations as to the completeness or accuracy thereof.



FLOOR PLAN — AVAILABLE IMMEDIATELY

- » 1,000 SF Total Available
 - » 550 SF Office
 - » 450 SF Warehouse
- » (1) 10' x 10' Grade Level Door
- » 100% Climate-Controlled



RYAN YOUNG

281.584.3320

RYAN.YOUNG@FORT-COMPANIES.COM

THOMAS PFEIFER

281.504.7460

THOMAS.PFEIFER@FORT-COMPANIES.COM

This information is deemed reliable, however, Fort makes no guarantee, warranties, or representations as to the completeness or accuracy thereof.